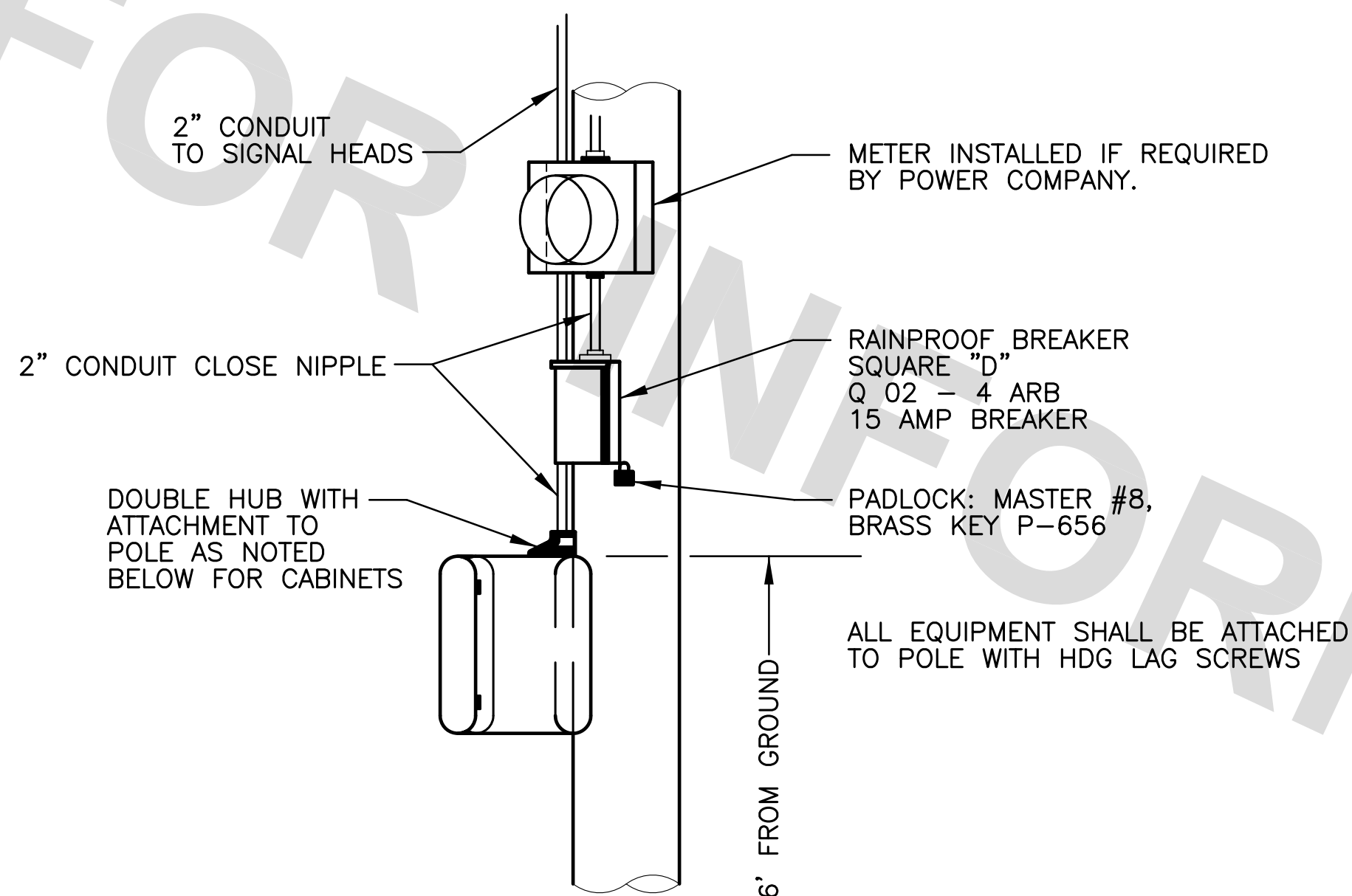
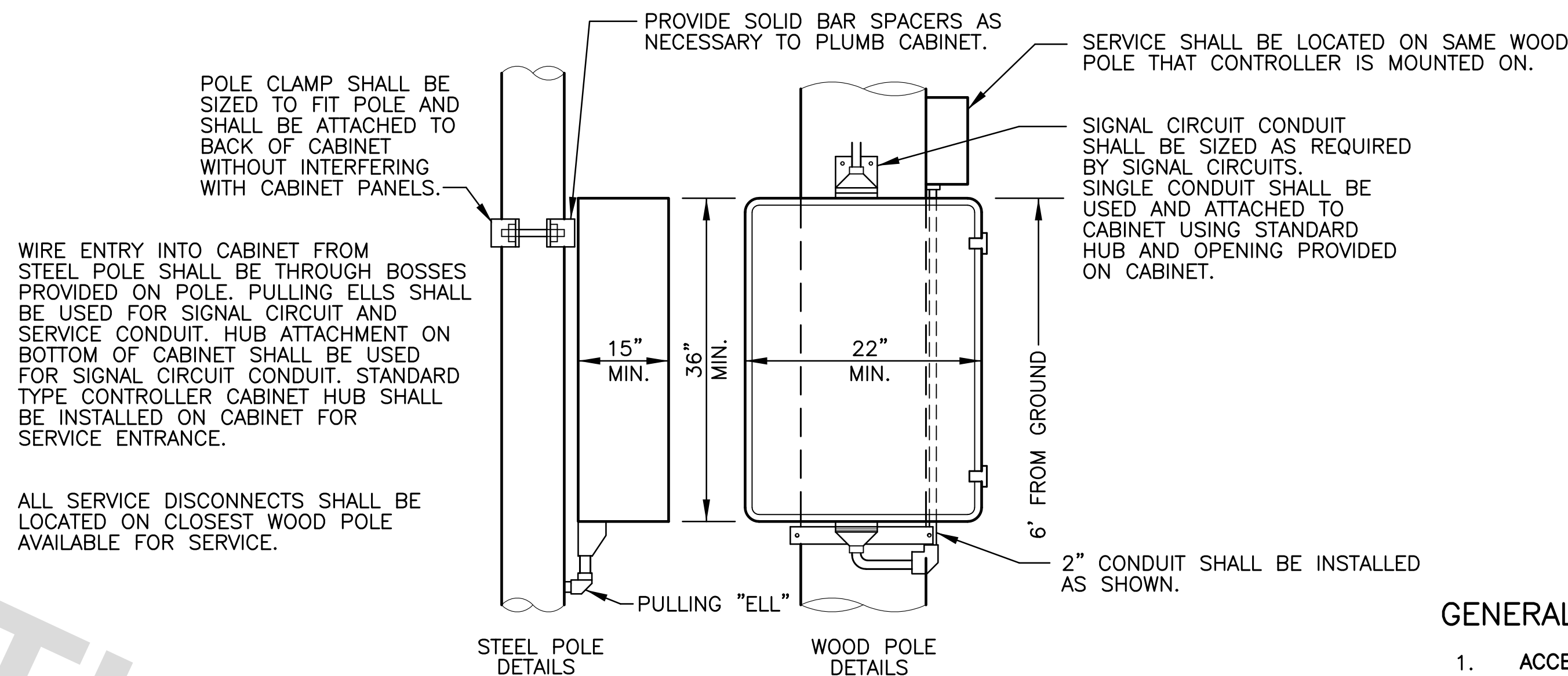


POLE MOUNTED FLASHER CONTROLLER  
(6 1/2" x 12" x 16")



NOTES: USED FOR FLASHING HAZARD BEACONS AND CONTINUOUS FLASHING SIGNS. THIS ITEM SHALL BE INCLUSIVE WITH ELECTRICAL SERVICE.  
FLASHER CONTROL CABINET TO BE PAINTED YELLOW

POLE MOUNTED CONTROLLER CABINET

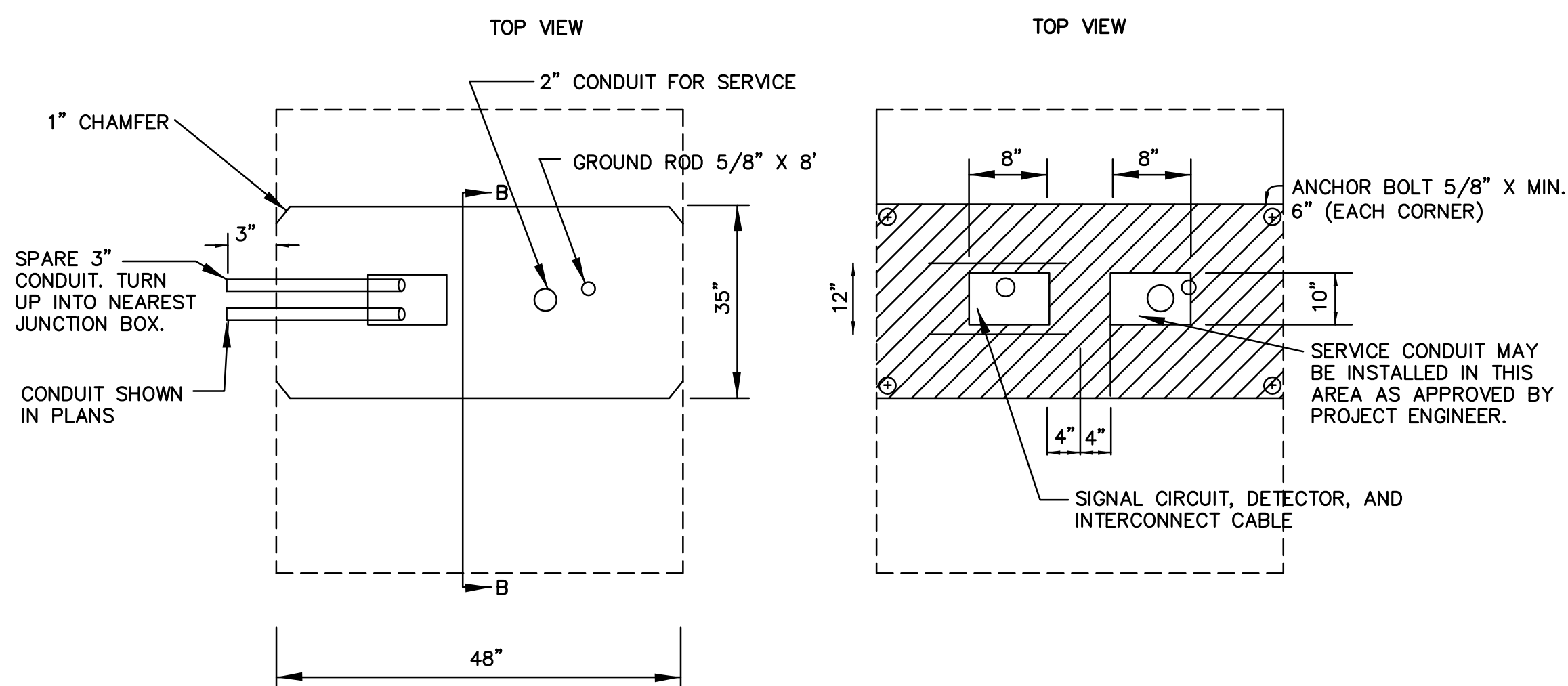


NOTES: TOP AND BOTTOM OF CABINET SHALL BE ATTACHED TO WOOD POLES USING BRACKETS MOUNTED WITH CONDUIT HUBS, STANDARD BRACKETS; AND ATTACHED TO POLE WITH 1/2" x 4" HDG LAG SCREWS.  
CONDUIT FOR SIGNAL CIRCUIT SHALL BE SIZED FOR SIGNAL CIRCUITS, MIN. 2", MAX. 3"

GENERAL NOTES:

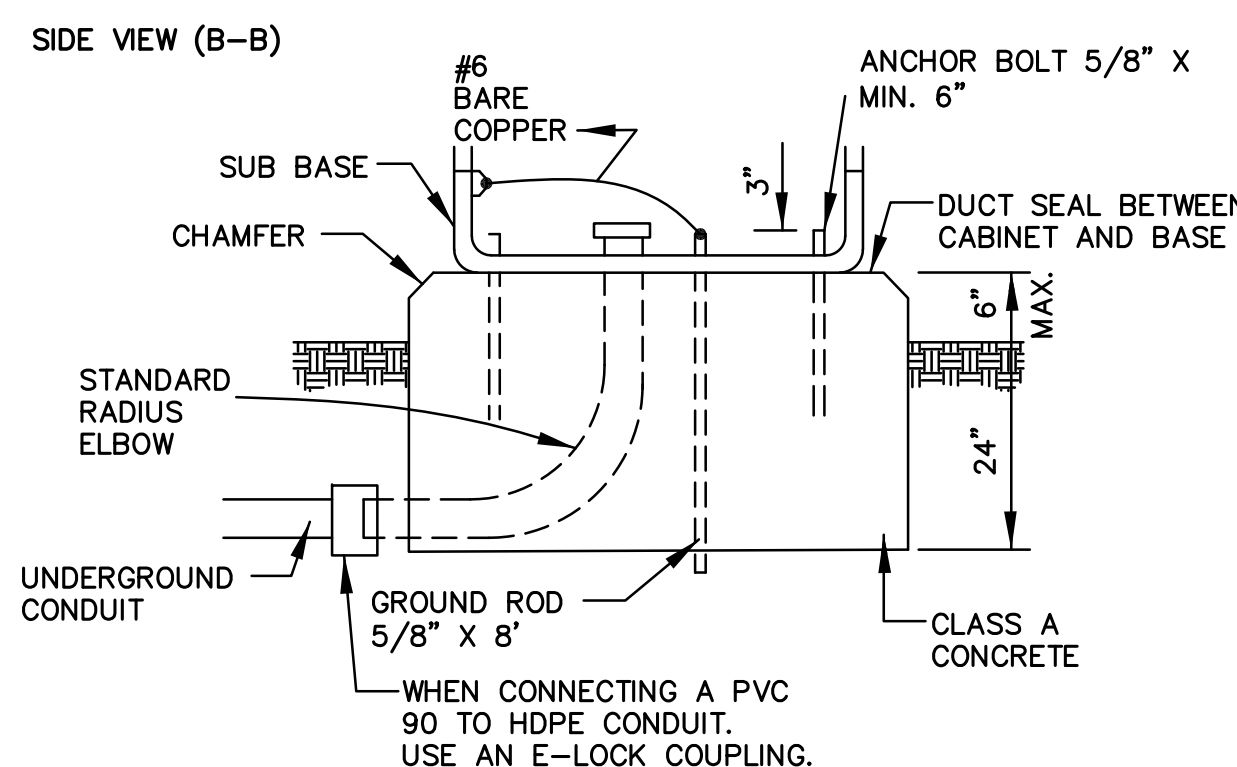
- ACCESS: ACCESS TO CONTROLLER CABINET AND ASSOCIATED SIGNAL EQUIPMENT MUST BE AVAILABLE AT ALL TIMES. SPACE MUST BE PROVIDED FOR DOOR SWING. A CONCRETE 3' X 5' X 4" DRY PAD SHALL BE PROVIDED FOR SIGNAL TECHNICIAN. ANY FENCES, EQUIPMENT AND MATERIAL STORAGE IN THE AREA SHALL NOT BLOCK ACCESS TO SIGNAL EQUIPMENT.
- LOCATION: THE PROJECT ENGINEER PRIOR TO INSTALLATION SHALL APPROVE THE LOCATION OF EACH CONTROLLER CABINET. THE BACK OF THE CONTROLLER CABINET SHALL FACE TOWARD THE CENTER OF INTERSECTION AS DIRECTED BY THE PROJECT ENGINEER.

CONTROLLER CABINET FOUNDATION

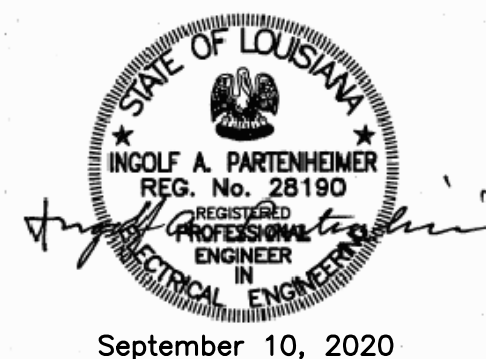
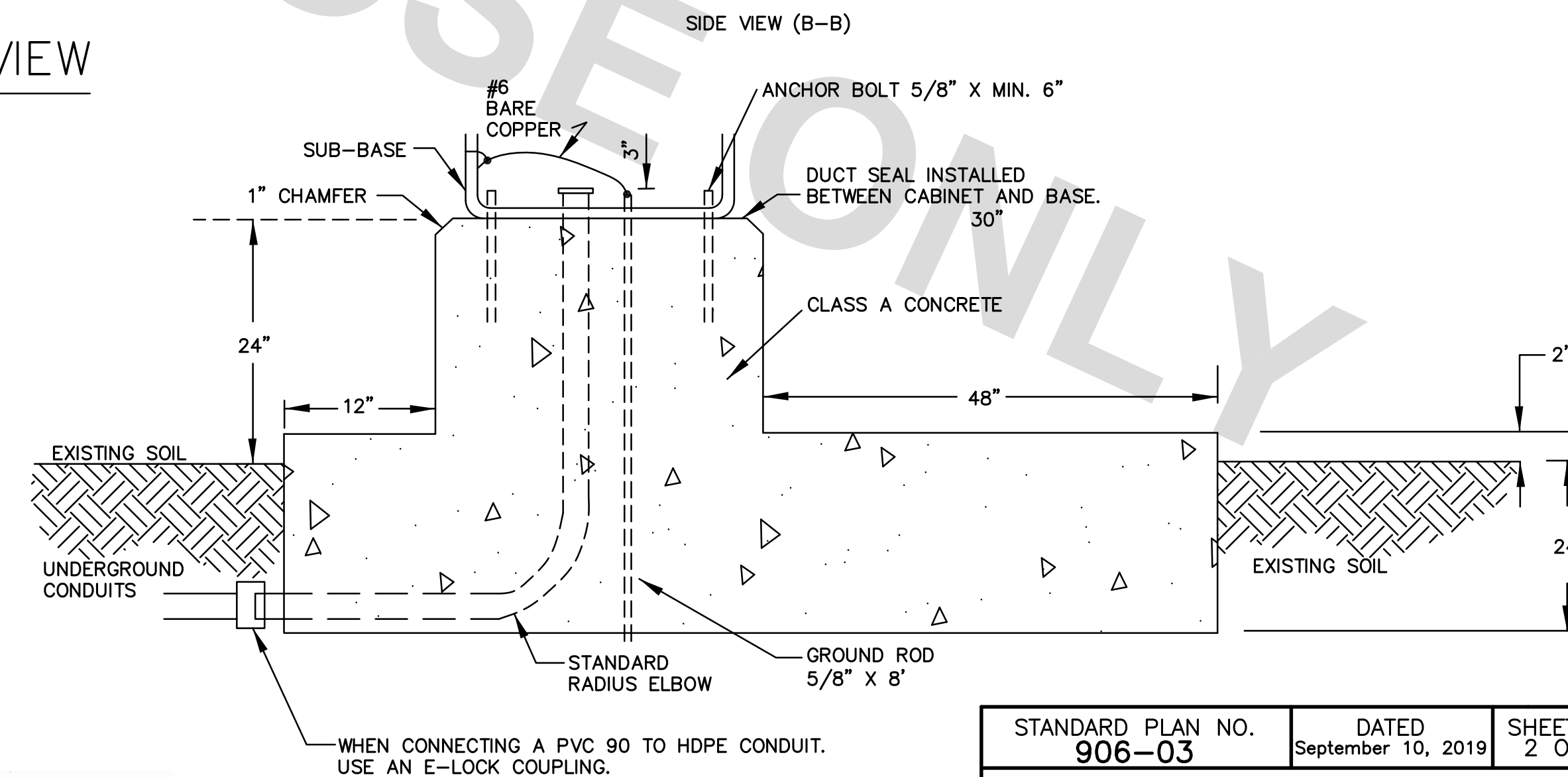


- NOTES:
- ALL GROUND MOUNTED CONTROLLERS SHALL HAVE A SPARE 3" CONDUIT RAN 24" BELOW GRADE TO JUNCTION BOX.
  - EXPOSED CONCRETE EDGES SHALL HAVE A 1" CHAMFER.
  - ALL CONDUIT, GROUND ROD AND ANCHOR BOLTS SHALL PROTRUDE 2 3/4" MIN. - 3" MAX. ABOVE FINISHED FOUNDATION.
  - FOUNDATION SHALL BE ORIENTED SO THAT THE DOOR IS FACING AWAY FROM TRAFFIC.
  - A #6 BARE SOLID COPPER WIRE SHALL BE REQUIRED TO CONNECT BETWEEN GROUND ROD AND GROUND LUG ON PANEL.

TYPICAL CABINET FOUNDATION SIDEVIEW



ALTERNATIVE STEP FOUNDATION SIDEVIEW



STANDARD PLAN NO. 906-03	DATED September 10, 2019	SHEET NO. 2 OF 5
48ELECTRICAL DETAILS (CONTROLLER CABINET)		
ENGINEERING DIVISION DEPARTMENT OF TRANSPORTATION AND DRAINAGE CITY OF BATON ROUGE & PARISH OF EAST BATON ROUGE		
DESIGNED T.E.D.	DRAWN G. VANNICE	CHECKED S. EDEL
APPROVED I. PARTENHEIMER		