

STEEL STRAIN POLE DETAILS

| | |
|-------------|-------|
| PROJECT NO. | SHEET |
| | |

CITY-PARISH DEPARTMENT OF PUBLIC WORKS TRAFFIC CONTROL
STANDARDS FOR STEEL STRAIN POLES AND STEEL CONTROLLER
POLES

THESE POLES AND FITTINGS SHALL BE HOT DIPPED GALVANIZED. THE POLE HEIGHT AND TYPE SHALL BE AS SPECIFIED ON THE PLANS. ALL POLES SHALL BE DESIGNED FOR A MINIMUM WORKING LOAD OF 4,000 LBS. APPLIED TWELVE (12") FROM THE TOP OF POLE.

THE POLE SHAFT SHALL BE ROUND OR OCTAGONAL IN CROSS SECTION WITH A BASE DIMENSION OF 11 3/4" AT FACE (A.F.) TAPERED TO EIGHT (8") A.F. AT THE TOP OF THE POLE. THE TOP OF THE POLE SHALL HAVE A REMOVABLE CAST ALUMINUM POLE CAP. 2-3" HALF COUPLINGS AND A ONE (1") HALF COUPLING (WITH PLUGS) SHALL BE PROVIDED 18" FROM THE TOP OF POLE FOR WIRE ENTRANCE.

A REINFORCED HANDHOLE WITH COVER SHALL BE PROVIDED 18" FROM THE BASE WITH INSIDE DIMENSIONS OF 4" X 6 1/2". NO OBSTRUCTIONS SHALL BE IN THE HANDHOLE WHEN THE COVER IS REMOVED. A GROUNDING LUG SHALL BE WELDED TO THE INSIDE OF THE POLE 90° TO THE LEFT AND HORIZONTAL FROM THE HANDHOLE. A 1/2" GROUND BOLT SHALL BE INSTALLED IN THE GROUND LUG.

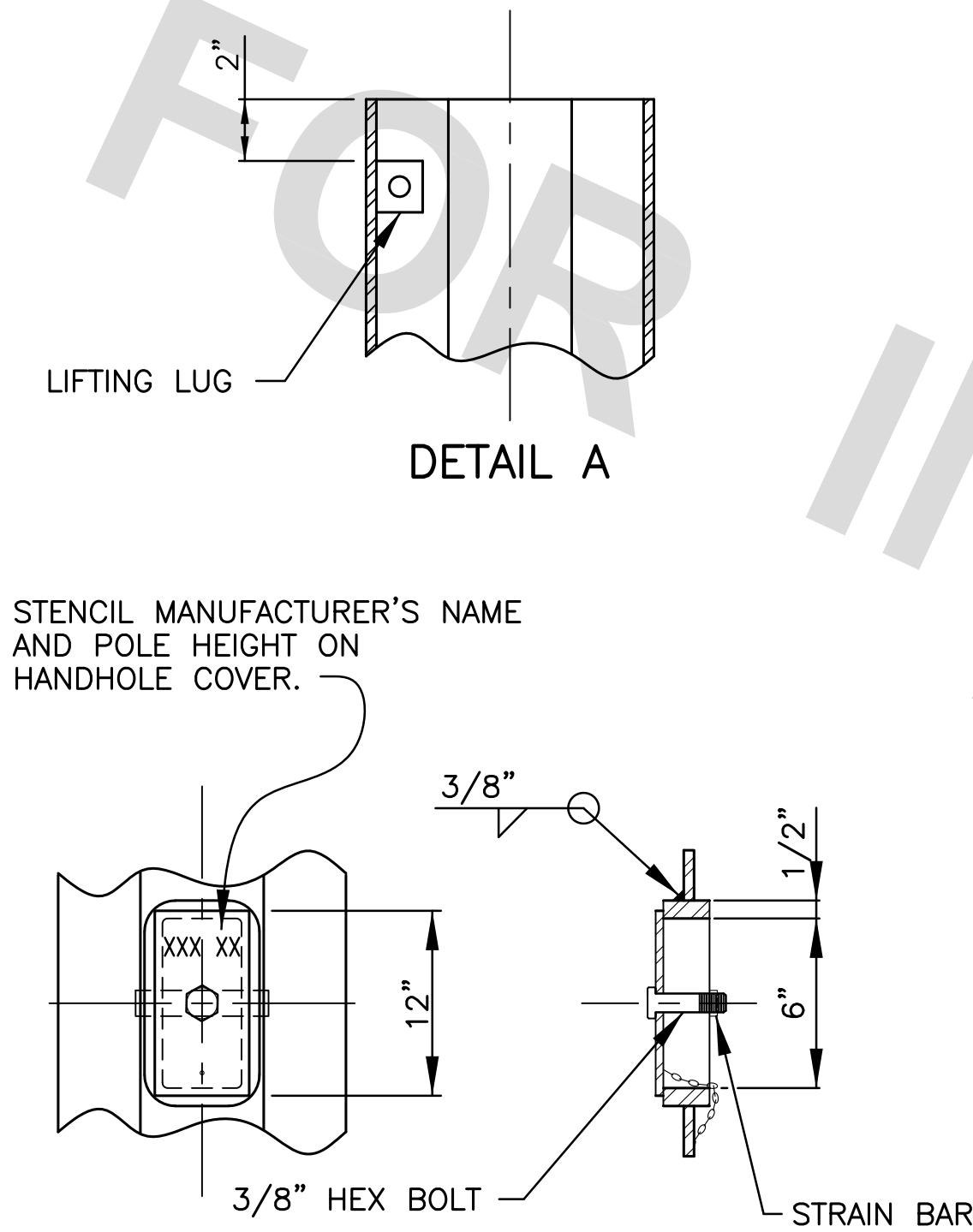
A ONE (1") AND A THREE (3") HALF COUPLING SHALL BE PROVIDED AT THE BASE OF EACH POLE. THESE COUPLINGS SHALL BE CENTERED ON A HORIZONTAL LINE TWENTY-FOUR (24") INCH FROM THE BASE, WHEN FACING THE COUPLINGS. THE 1" COUPLING SHALL BE NO MORE THAN 35° TO RIGHT OF THE THREE (3") COUPLING. THE THREE (3") COUPLING SHALL BE LOCATED 180° FROM THE HANDHOLE AND CENTERED ON THE POLE FLAT. ALL COUPLINGS ON THE POLE SHAFT SHALL HAVE A GALVANIZED STEEL PIPE PLUG INSTALLED TO FULL THREAD DEPTH.

THE POLE SHALL HAVE A STEEL BASE PLATE WELDED TO THE BASE. THE POLE SHALL BE FURNISHED WITH ANCHOR BOLTS PER FOUNDATION REQUIREMENT. ONE HEX NUT AND ONE ACORN TYPE CAP NUT SHALL BE PROVIDED FOR EACH ANCHOR BOLT. THE NUTS SHALL BE 2 5/8" ACROSS THE FLATS.

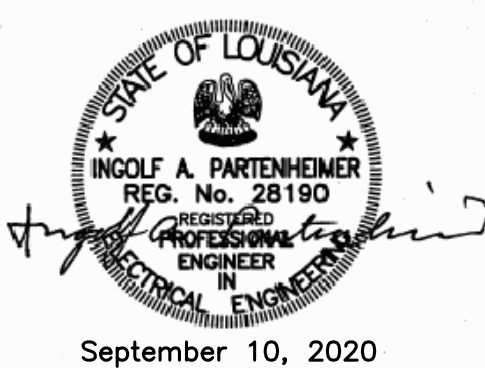
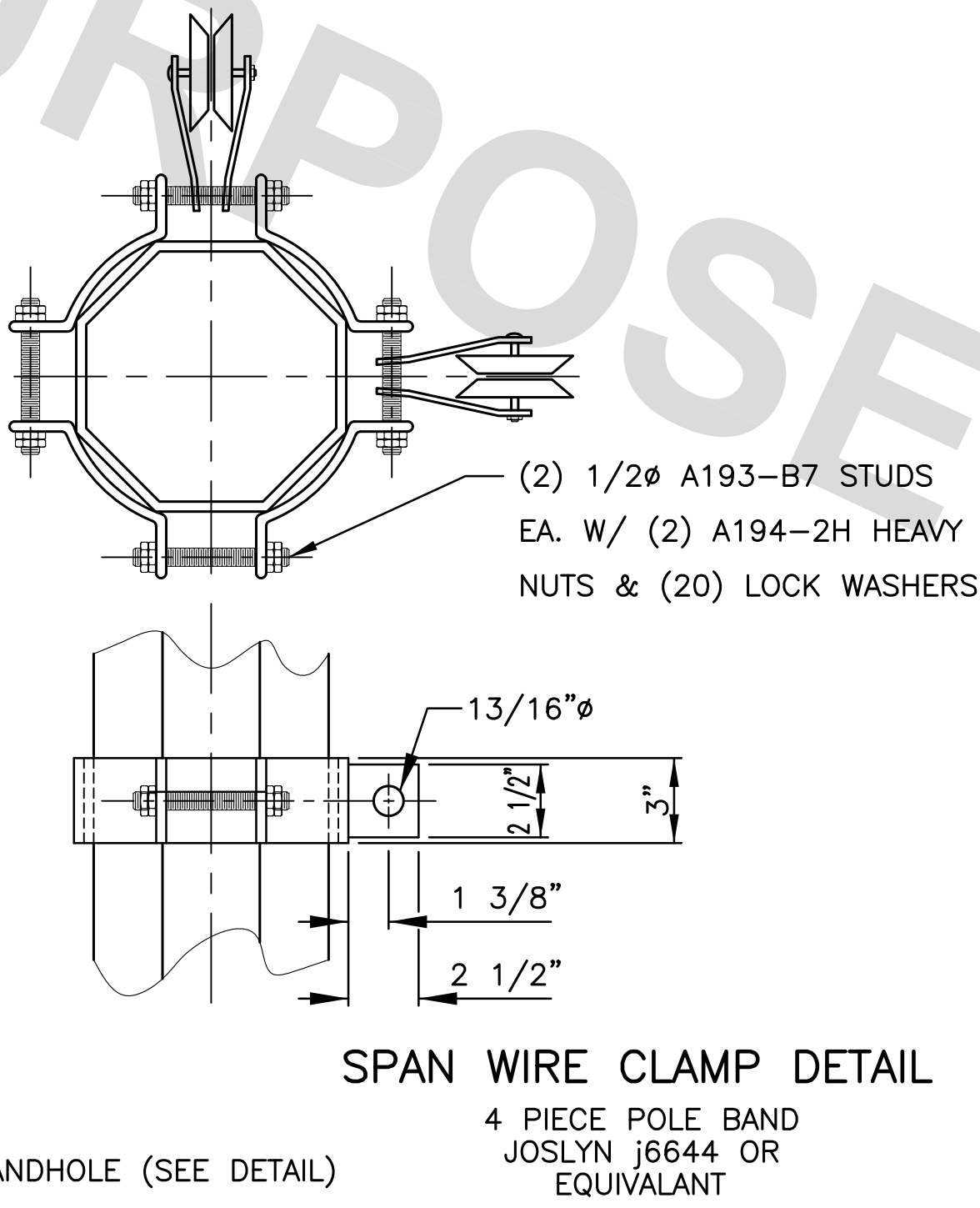
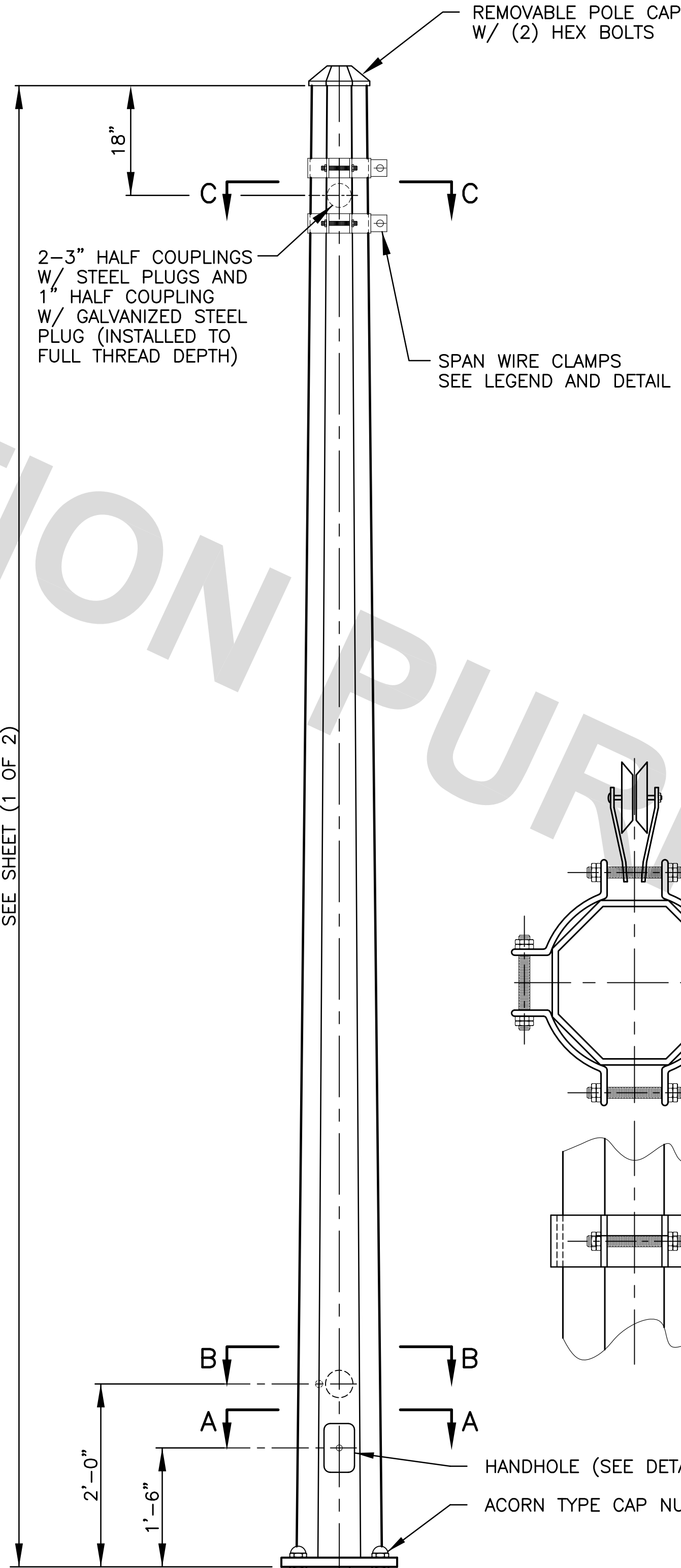
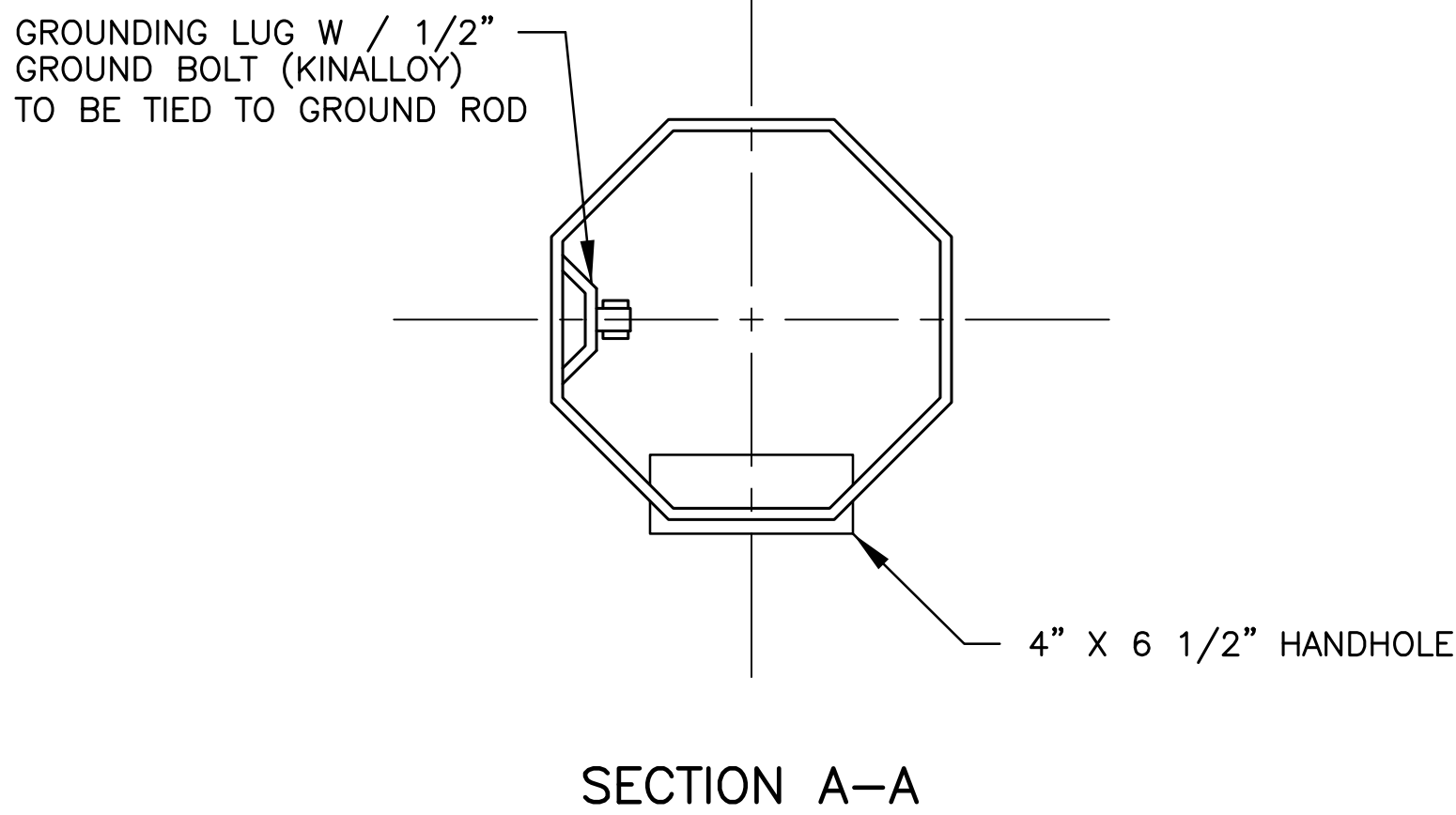
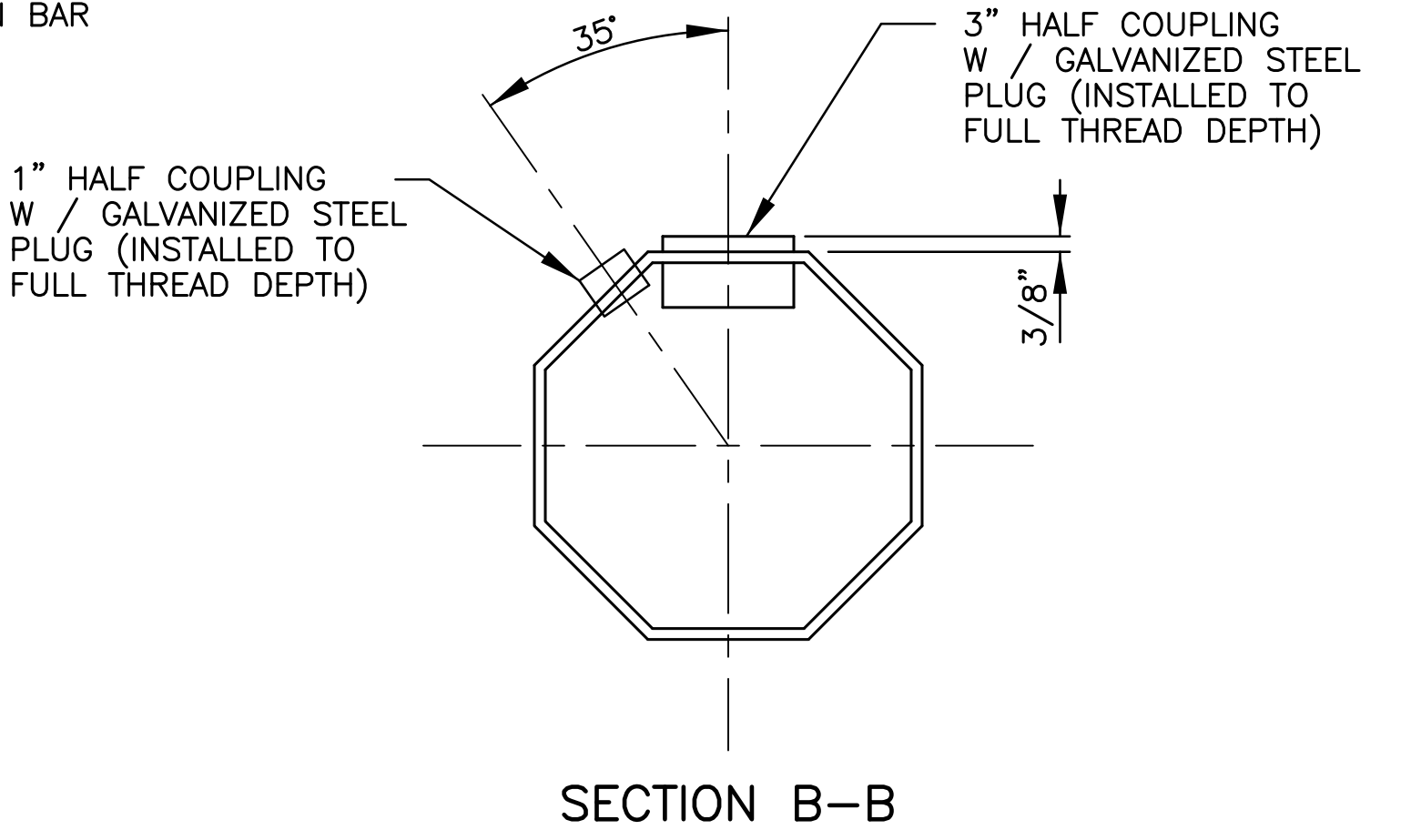
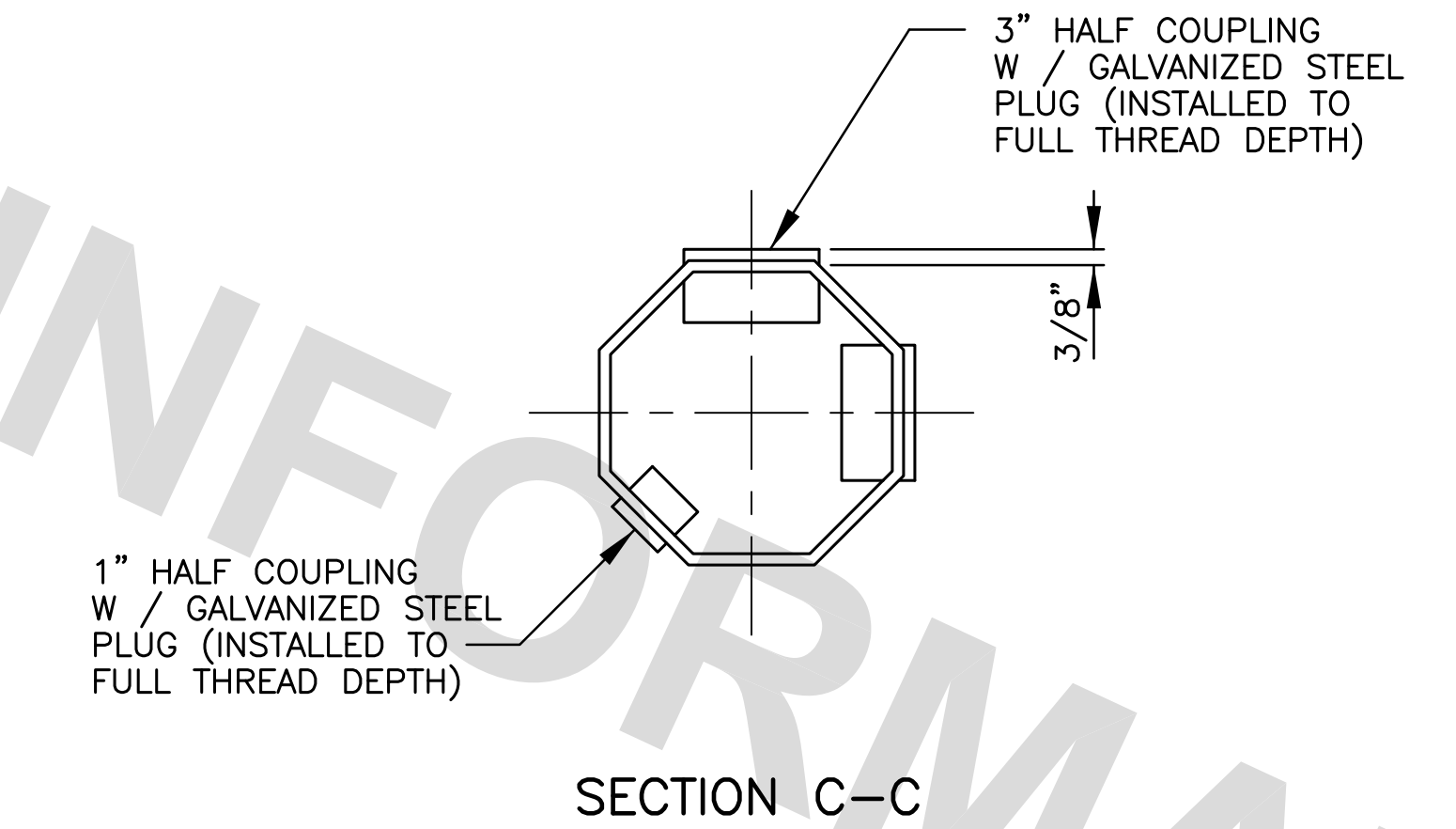
THE ANCHOR BOLTS SHALL BE SHIPPED IN BUNDLES OF SIX WITH THE HEX NUT ATTACHED. ALL POLE HARDWARE, INCLUDING LEVELING AND CAP NUTS, SHALL BE SHIPPED ON A PER POLE BASIS.

SPECIFICATIONS:

- MATERIAL SHALL CONFORM TO THE FOLLOWING:
 - (A) SHAFT A1011 (50 KSI MIN YIELD)
 - (B) ANCHOR BOLTS ASTM 1554
 - (C) ALL OTHER BOLTS A325 OR A307
 - (D) BASE PLATE A36 GRADE-50 KSI MIN.
 - (E) POLE CAP CAST ALUMINUM
- FINISH:
 - (A) ENTIRE ASSEMBLY HOT DIP GALVANIZED IN ACCORDANCE WITH ASTM A123.
 - (B) THREADED FASTENERS $\geq \frac{1}{2}$ " GALVANIZED PER ASTM A153
 - (C) THREADED FASTENERS $< \frac{1}{2}$ " CADMIUM PLATED



6" X 12" HANDHOLE DETAIL
(SHIP ASSEMBLED TO POLE)



| | | |
|--|-----------------------------|---------------------|
| STANDARD PLAN NO. 906-02 | DATED September 10, 2019 | SHEET NO. 5 OF 6 |
| SIGNAL SUPPORT & DETAILS (STRAIN POLES) | | |
| ENGINEERING DIVISION DEPARTMENT OF TRANSPORTATION AND DRAINAGE CITY OF BATON ROUGE & PARISH OF EAST BATON ROUGE | | |
| DESIGNED T.E.D. | DRAWN G. VANNICE | CHECKED S. EDEL |
| APPROVED I. PARTENHEIMER | | |