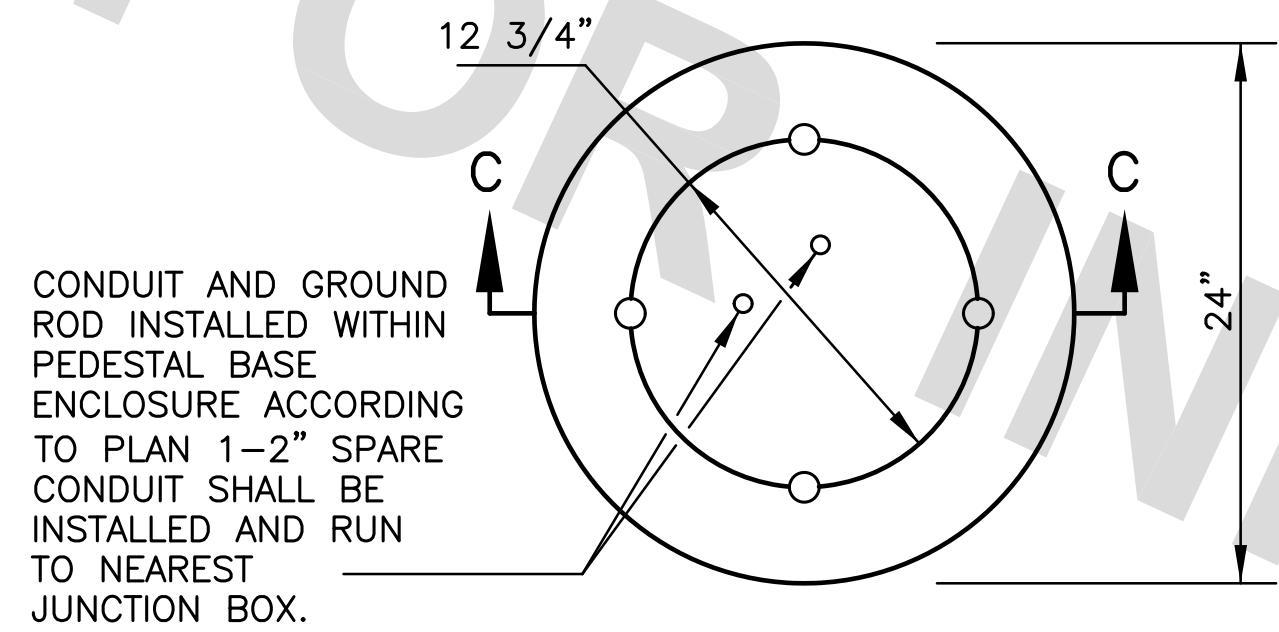
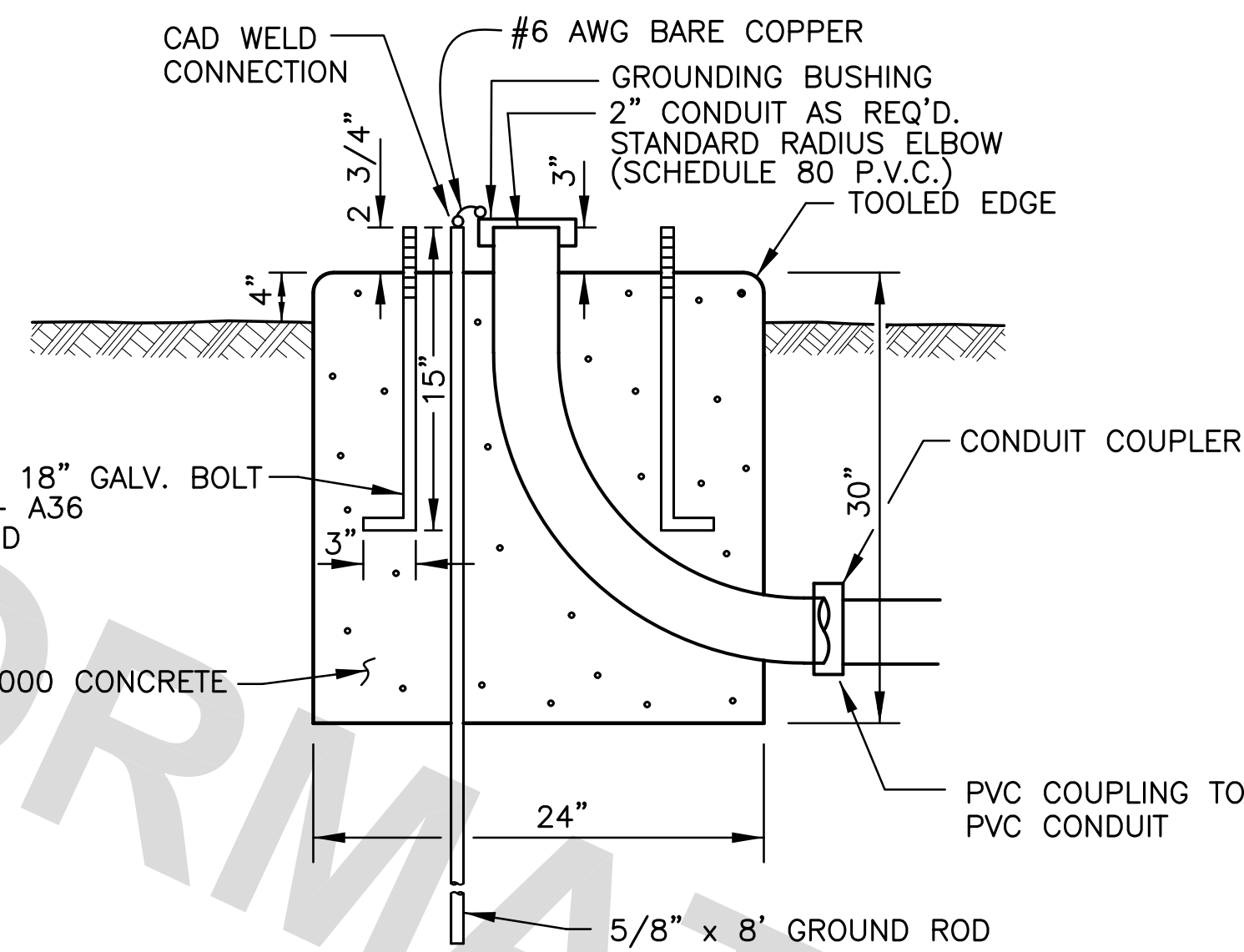


PROJECT NO.	SHEET

5/8" x 18" GALVANIZED ANCHOR BOLTS TO BE LOCATED AS SHOWN BELOW.



TOP VIEW

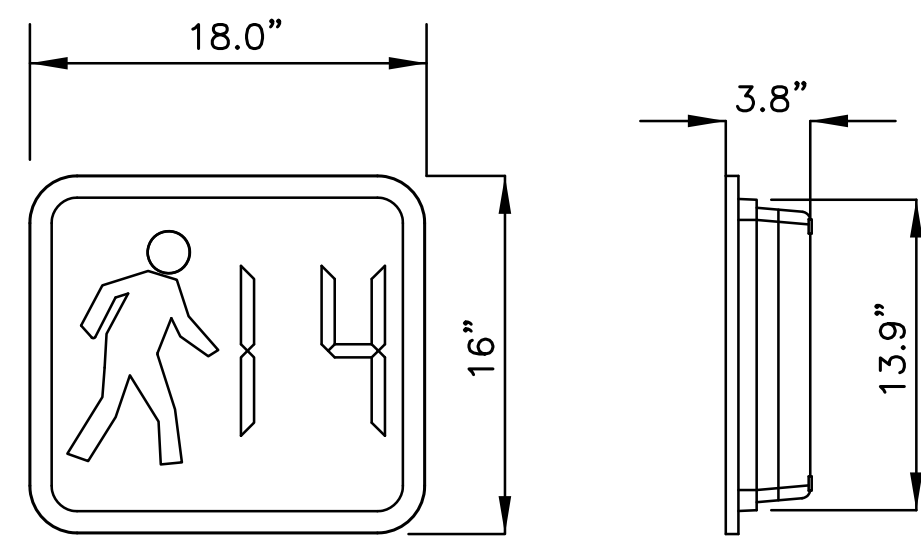


SECTION C-C

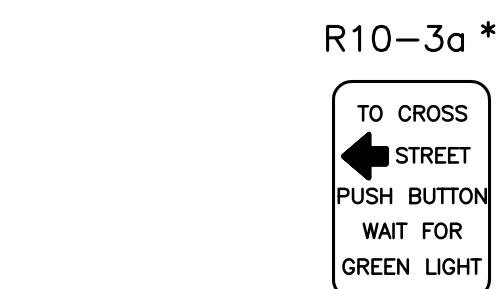
SIGNAL PEDESTAL FOUNDATION (TYPICAL)

NOTES:

1. FORMS MUST BE APPROVED BY THE PROJECT ENGINEER BEFORE POURING CONCRETE INTO ANY FOUNDATION FORM OR BEFORE COVERING ANY CONDUIT.
2. TRAFFIC SIGNAL ANCHOR BOLTS SHALL PROTRUDE 2" MIN. - 3" MAX. ABOVE FINISHED PEDESTAL FOUNDATION. CONDUIT AND GROUND RODS SHALL PROTRUDE 2" ABOVE FINISHED FOUNDATION.
3. BACKFILL OVER CONDUIT RUNS SHALL BE OF SOIL OR SAND AND SHALL NOT CONTAIN ROCKS OR CONCRETE.
4. ALL CONDUIT TO BE SCHEDULE 80 P.V.C.
5. ALL 90° ELBOWS TO BE STANDARD RADIUS.
6. FOR "DECORATIVE" OR SPECIAL DESIGN FOUNDATIONS, CONTRACTORS SHALL VERIFY AND SUBMIT FOR APPROVAL, ANY BOLT PATTERN THAT DEVIATES FROM THIS DESIGN.



LED PEDESTRIAN COUNTDOWN SIGNALS



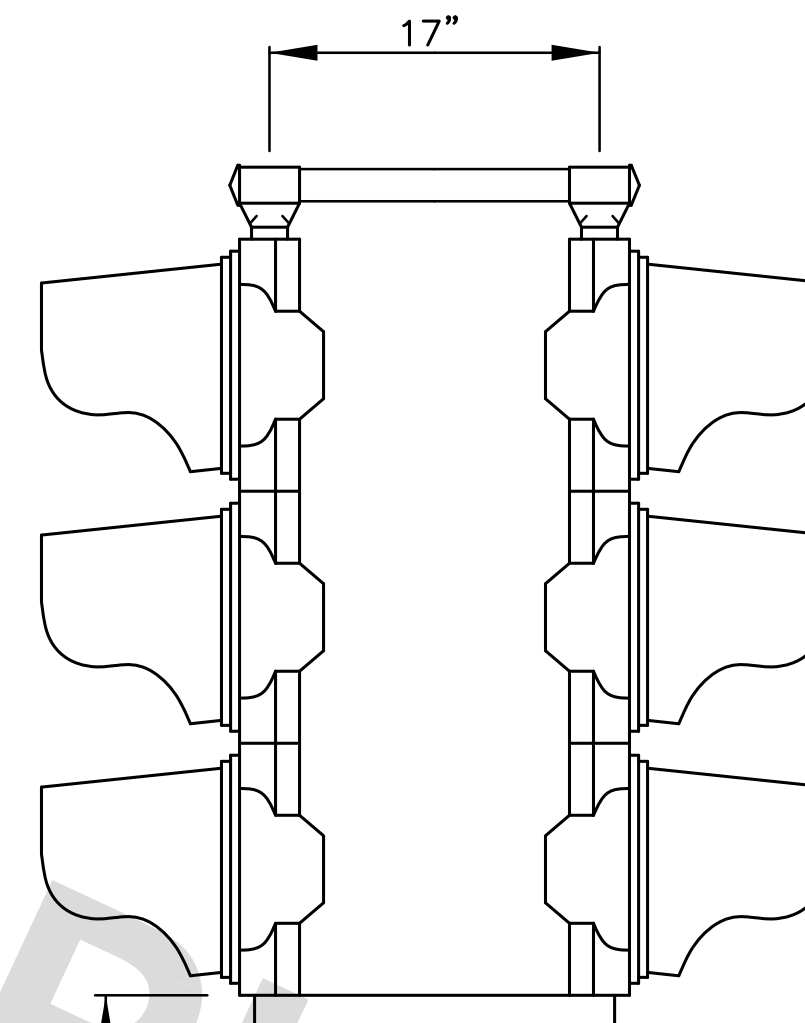
PEDESTRIAN PUSH BUTTON SWITCH

\* LEFT DIRECTIONAL SHOWN RIGHT DIRECTIONAL SIMILAR

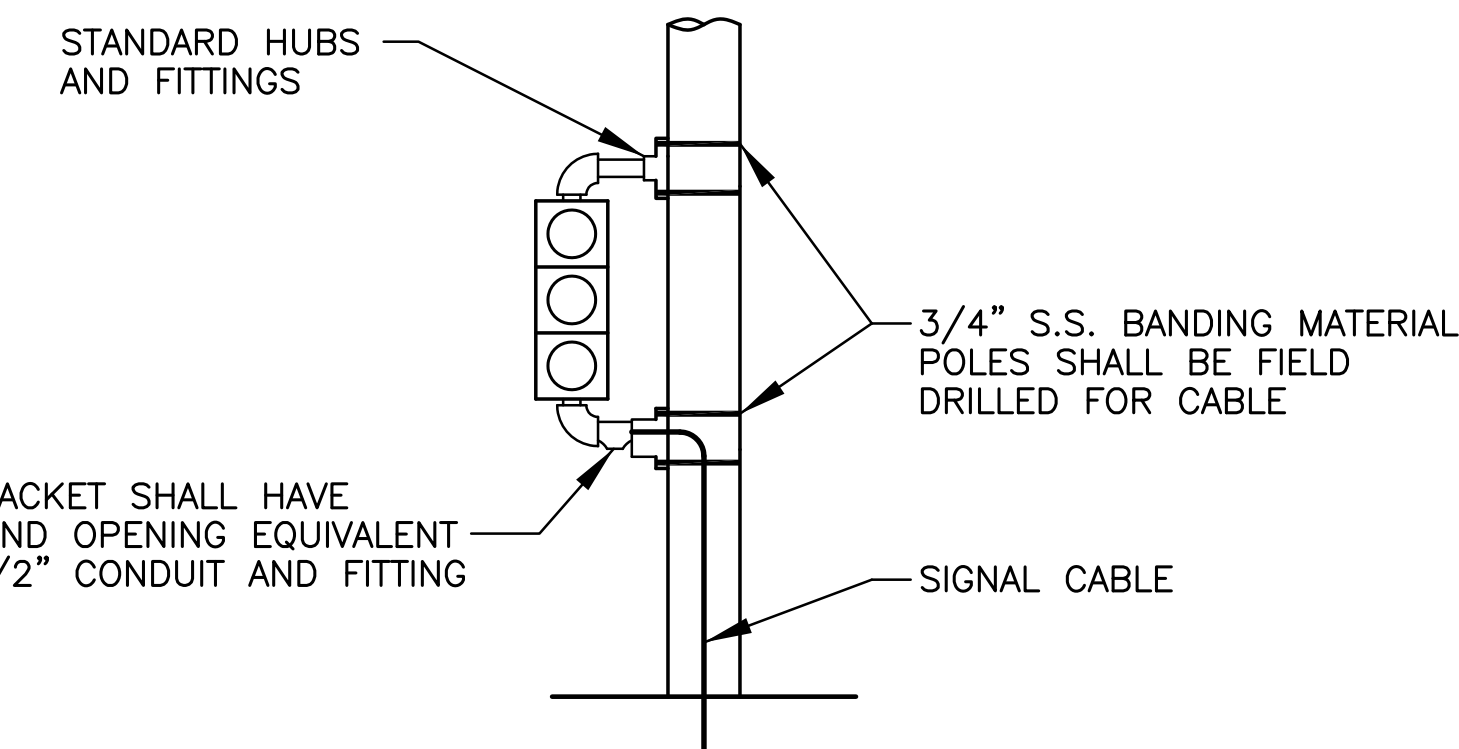
PEDESTRIAN SIGNAL (CITY)

NOTES:

1. PEDESTRIAN PUSH BUTTONS SHALL BE FURNISHED AND INSTALLED WITH PEDESTRIAN SIGNALS AT INTERSECTIONS WITH VEHICLE ACTUATED CONTROLLERS. PUSH BUTTONS MAY ALSO BE REQUIRED AT OTHER INTERSECTIONS, AND THOSE SO REQUIRED ARE DESIGNATED ON INTERSECTION LAYOUT SHEETS AND SHALL BE ADA COMPLIANT.
2. THE CONTRACTOR SHALL FURNISH AND INSTALL A R10-3A OR R10-4A, LEFT OR RIGHT (AS APPROPRIATE) SIGN ABOVE EACH PEDESTRIAN PUSH BUTTON OR COMBO AS PER PLANS.
3. PEDESTRIAN SIGNALS MAY BE PLACED EITHER ON TOP OR ON THE SIDE OF PEDESTAL POLE OR ON THE SIDE OF A MAST ARM SUPPORT OR STRAIN POLE IN ACCORDANCE WITH THE PLANS.
4. CITY INTERSECTIONS WILL USE "ONE SECTION", COUNTDOWN, PEDESTRIAN SIGNAL INDICATION.



TYPICAL BRACKET ASSEMBLY TWO-WAY HEAD. ALL BRACKET ASSEMBLIES SHALL HAVE TERMINAL COMPARTMENTS. SIMILAR BRACKETS AND HARDWARE SHALL BE USED FOR ONE-WAY, THREE-WAY OR FOUR-WAY.



POLE MOUNTED SIGNAL HEADS

\*NOTE: FOR WOOD POLES USE STANDARD HUBS AND FITTINGS FASTENED WITH 3/8" HDG LAG SCREWS AND BANDED WITH 3/4" STAINLESS STEEL BANDING MATERIAL.

HORIZONTAL ALIGNMENT EACH SIGNAL HEAD SHALL BE AIMED WITHIN A MAXIMUM OF 3 DEGREES OF BEING PARALLEL TO THE APPROACH LANE TO WHICH IT APPLIES, UNLESS OTHERWISE DIRECTED BY THE PROJECT ENGINEER.

TWO-WAY, THREE-WAY SIGNAL HEADS AND PEDESTRIAN HEADS SHALL BE SIMILARLY MOUNTED WITH APPROPRIATE HARDWARE. CLEARANCE FROM BOTTOM OF SIGNAL HEAD TO PAVEMENT OR NATURAL GROUND SHALL BE 9' OR SHALL CONFORM TO THE MANUAL ON UNIFORM TRAFFIC DEVICES, CURRENT EDITION.

9' ABOVE PAVEMENT

POLE AND HARDWARE SHALL BE PLUMB.

PEDESTRIAN DETECTOR PEDESTAL ALTERNATIVE SHALL BE CAPPED. HEIGHT SHALL BE ADJUSTED FOR PEDESTRIAN SIGNAL INDICATION.

PEDESTRIAN ACTUATED SIGNAL SIGN.  
PEDESTRIAN PUSH BUTTON

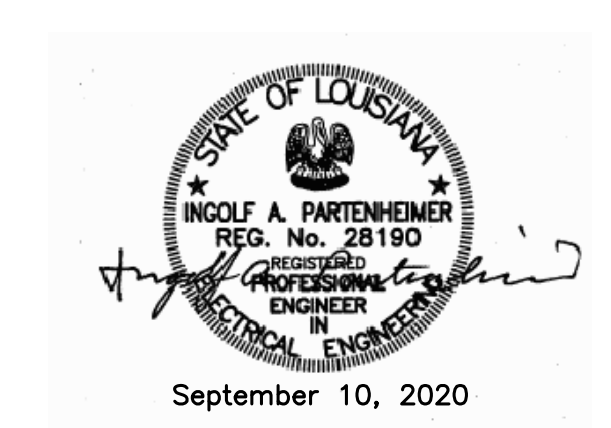
4" DIAMETER ALUMINUM OR STEEL

8" X 13" OPENING W/ REMOVABLE STEEL DOOR W/ (2) 1/4" HEX SCREWS

NATURAL GROUND OR SIDEWALK

PEDESTAL MOUNTED SIGNAL INSTALLATION AND/OR PEDESTRIAN DETECTOR PEDESTAL

FOUNDATION SHALL BE LEVEL. SIGNAL POLE BASE SHALL BE MOUNTED DIRECTLY ONTO FOUNDATION WITH NO SHIMS. BASE SHALL INCLUDE GROUND LUG.



STANDARD PLAN NO. 906-02	DATED September 10, 2019	SHEET NO. 3 OF 6
<b>SIGNAL SUPPORT DETAILS (PEDESTAL POLE DETAILS)</b>		

ENGINEERING DIVISION DEPARTMENT OF TRANSPORTATION AND DRAINAGE CITY OF BATON ROUGE & PARISH OF EAST BATON ROUGE			
DESIGNED T.E.D.	DRAWN G. VANNICE	CHECKED S. EDEL	APPROVED I. PARTENHEIMER

DATE	DESCRIPTION	BY
	REVISIONS	