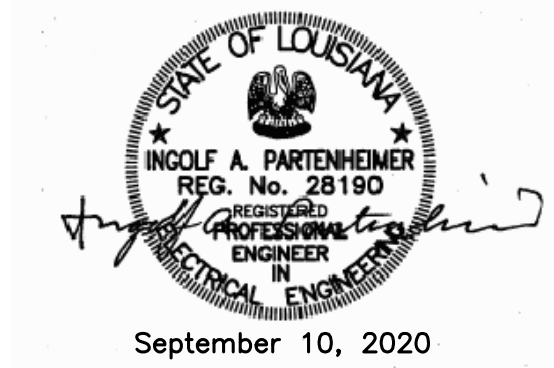
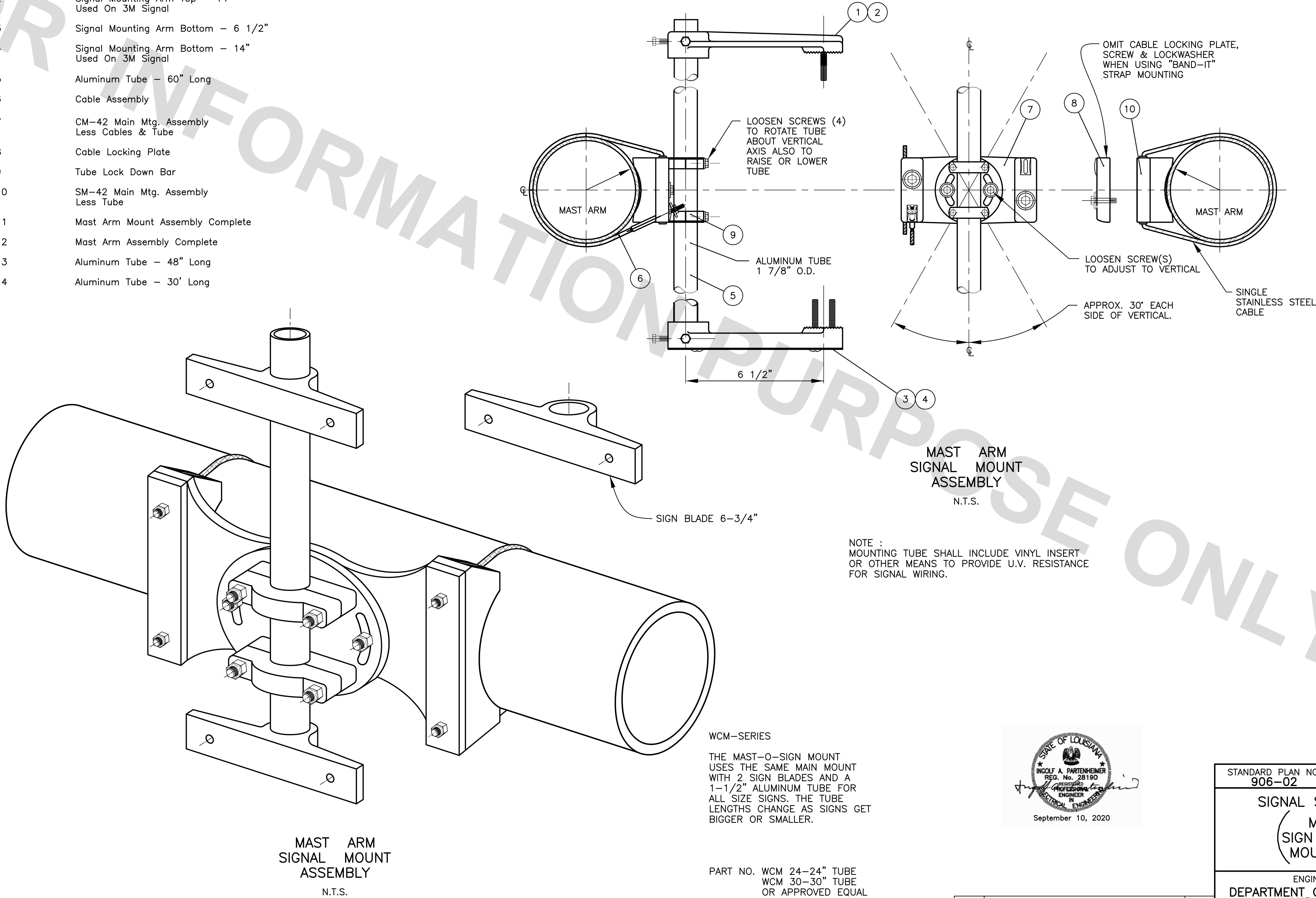


PROJECT NO.	SHEET

ITEM NO.	DESCRIPTION
1	Signal Mounting Arm Top - 6 1/2"
2	Signal Mounting Arm Top - 14" Used On 3M Signal
3	Signal Mounting Arm Bottom - 6 1/2"
4	Signal Mounting Arm Bottom - 14" Used On 3M Signal
5	Aluminum Tube - 60" Long
6	Cable Assembly
7	CM-42 Main Mtg. Assembly Less Cables & Tube
8	Cable Locking Plate
9	Tube Lock Down Bar
10	SM-42 Main Mtg. Assembly Less Tube
11	Mast Arm Mount Assembly Complete
12	Mast Arm Assembly Complete
13	Aluminum Tube - 48" Long
14	Aluminum Tube - 30' Long



STANDARD PLAN NO. 906-02	DATED September 10, 2019	SHEET NO. 2 OF 6
SIGNAL SUPPORT DETAIL (MAST ARM SIGN AND SIGNAL MOUNT DETAILS)		
ENGINEERING DIVISION DEPARTMENT OF TRANSPORTATION AND DRAINAGE CITY OF BATON ROUGE & PARISH OF EAST BATON ROUGE		
DESIGNED T.E.D.	DRAWN G. VANNICE	CHECKED S. EDEL
APPROVED I. PARTENHEIMER		

DATE	DESCRIPTION	BY
	REVISIONS	