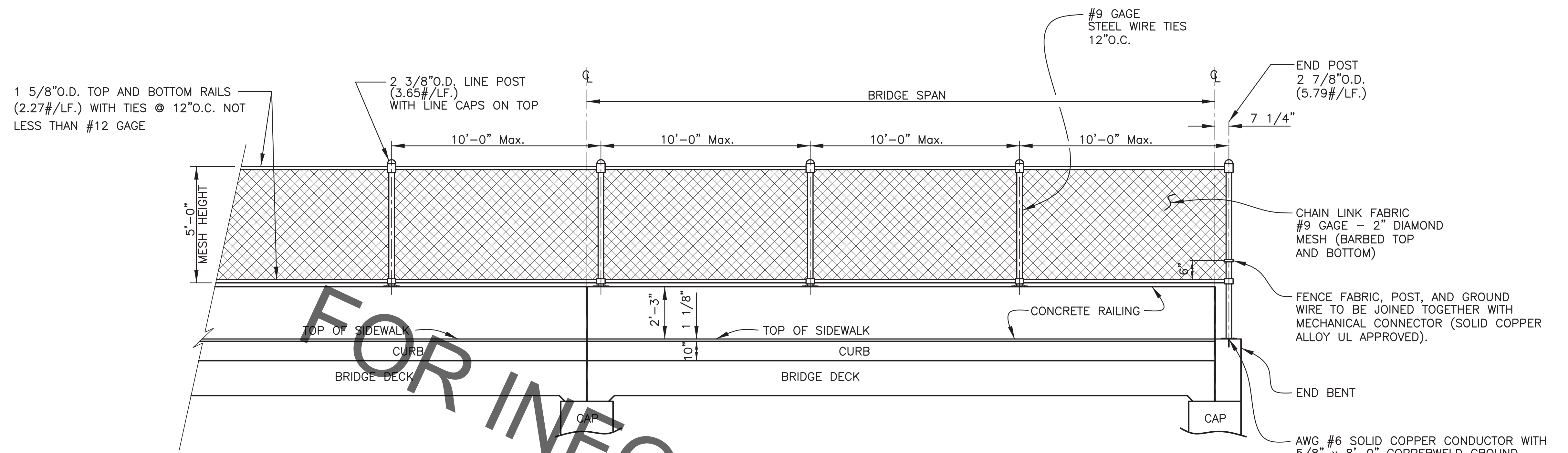
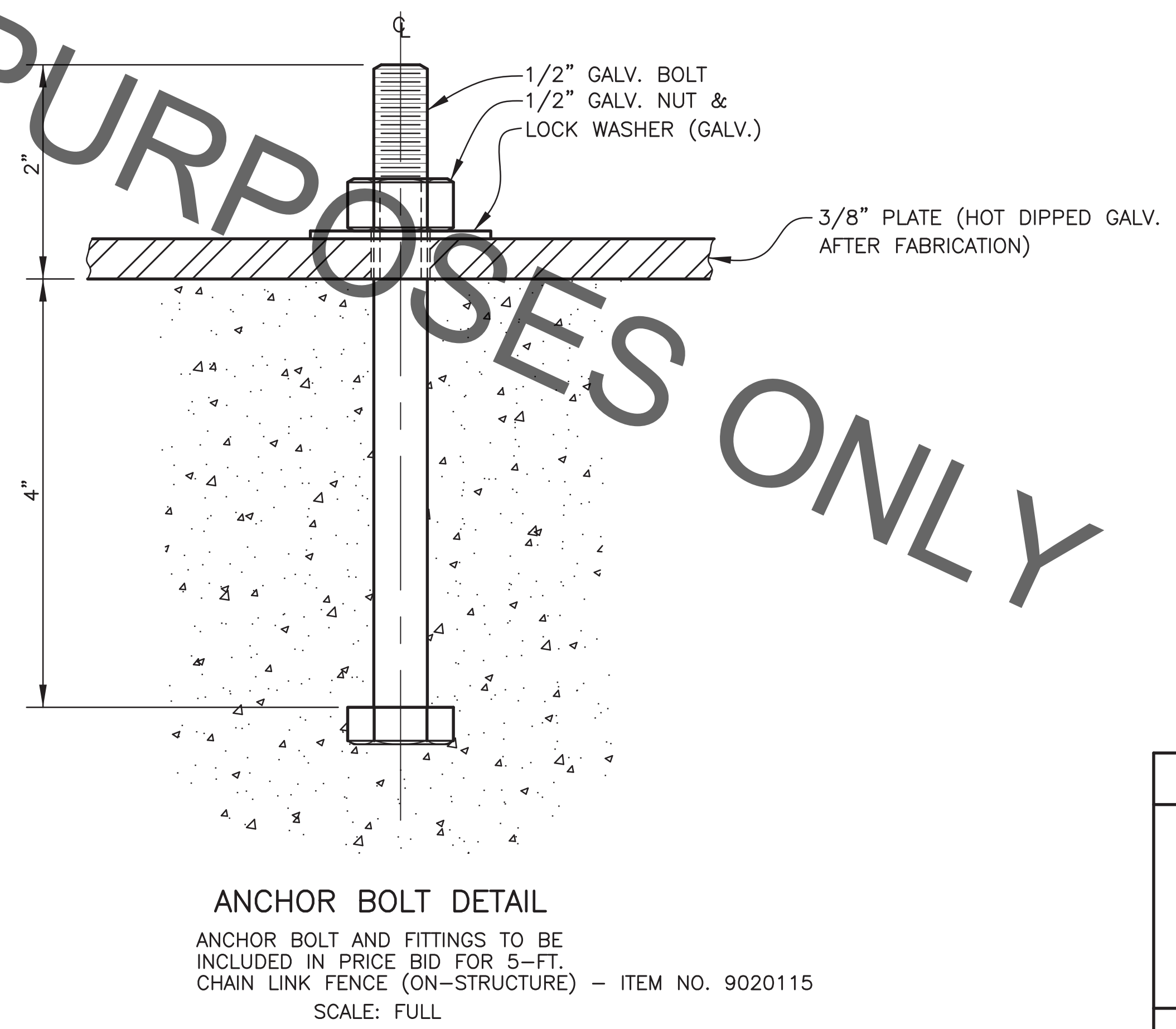
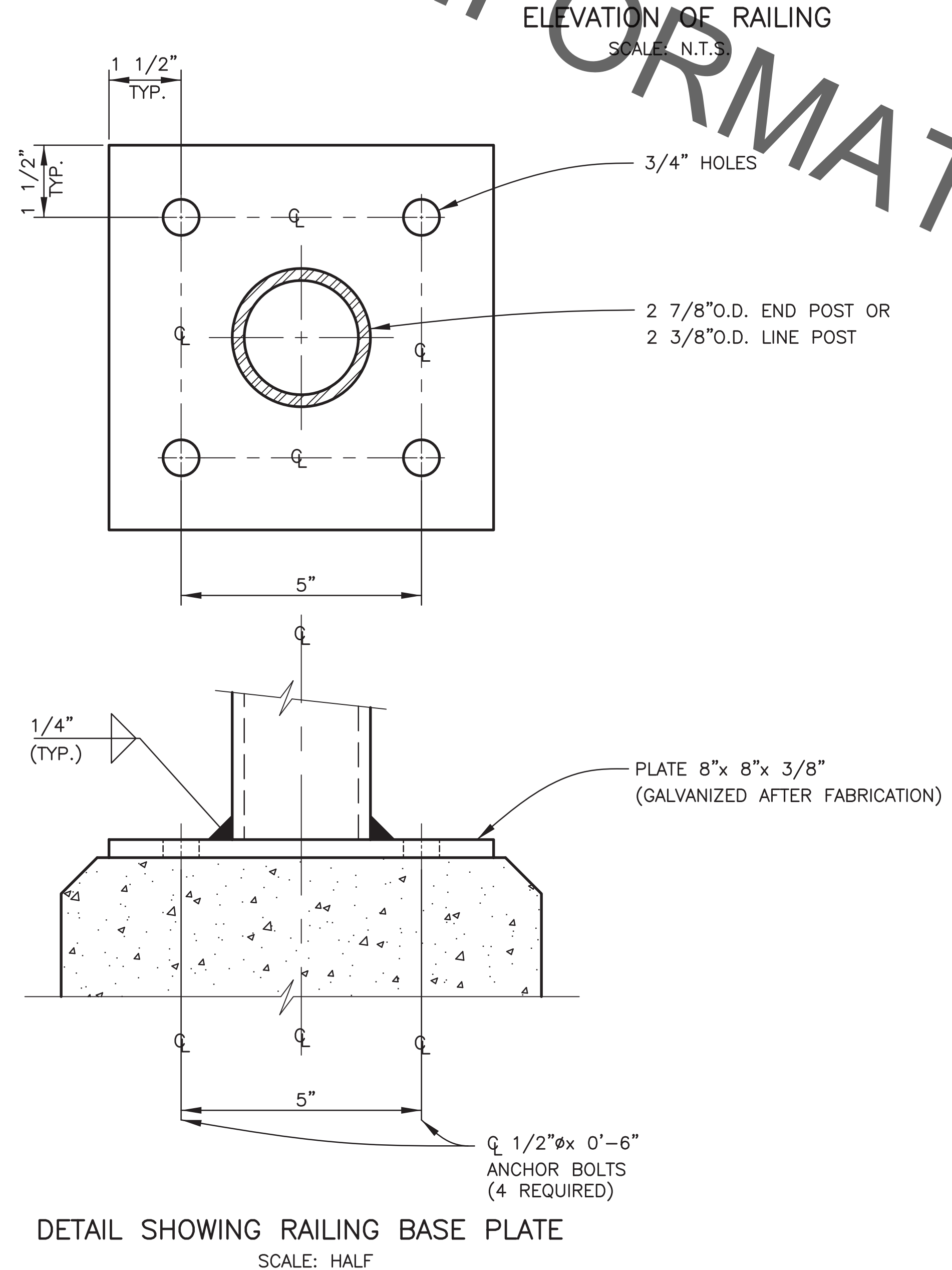


PROJECT NO.	SHEET



- GENERAL NOTES:**
- BRIDGE FENCING SHALL BE PAID FOR UNDER ITEM 9020115 PER LIN. FT. AND SHALL INCLUDE ALL LABOR, EQUIPMENT, AND NEW MATERIALS NECESSARY TO COMPLETE FENCING AND TIE INTO EXIST. FENCING ALONG CHANNEL.
 - ANY DAMAGE TO THE STRUCTURE DUE TO INSTALLATION OF FENCING WILL BE REPAIRED TO THE SATISFACTION OF THE ENGINEER. (NO DIRECT PAYMENT)
 - ANY GALVANIZED FENCE ITEM WHICH HAS ITS SURFACE ABRADED SHALL BE PAINTED WITH RUST-OLEUM "GALVINOLEUM," OR AN APPROVED EQUAL.
 - ALL METAL TO BE HOT - DIPPED GALVANIZED.



THOMAS A. STEPHENS
LICENSE NO. 19417
PROFESSIONAL ENGINEER
IN
CIVIL ENGINEERING
2/16/2018

STANDARD PLAN NO. 902-05	DATED February 8, 2008	SHEET NO. 1 OF 1
5-FOOT CHAIN LINK FENCE ON STRUCTURE		
ENGINEERING DIVISION DEPARTMENT OF PUBLIC WORKS CITY OF BATON ROUGE & PARISH OF EAST BATON ROUGE		
DESIGNED H. PYLANT	DRAWN G. VANNICE	CHECKED R. ELLIS
		APPROVED T. STEPHENS

DATE	DESCRIPTION REVISIONS	BY

ENGINEERING BOARD STUDY FORM 0-1