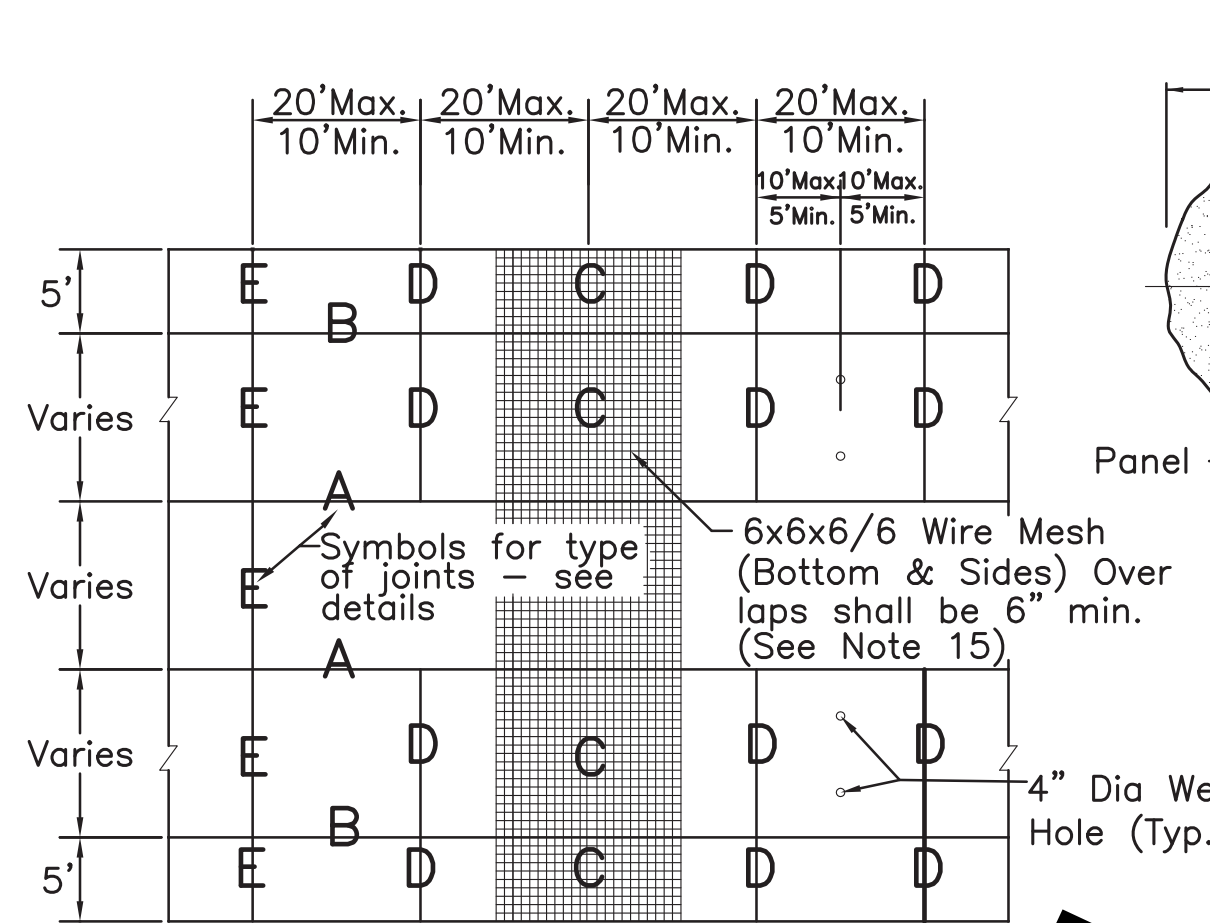
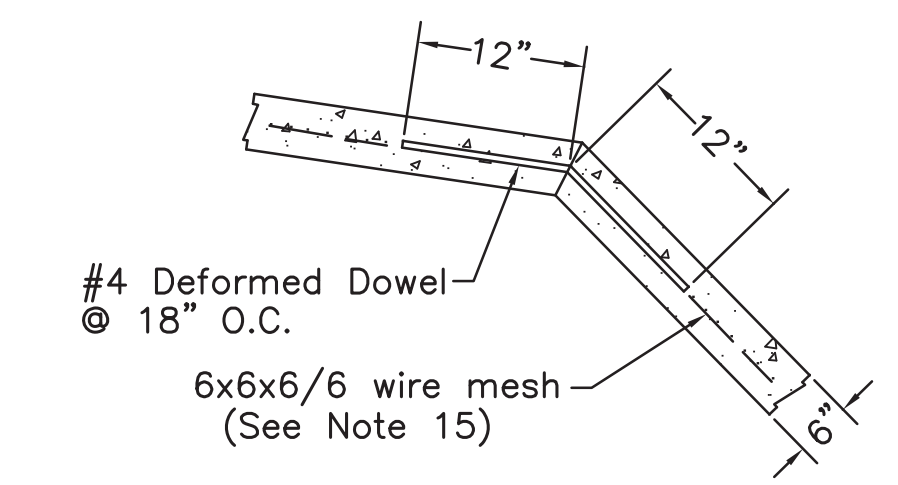


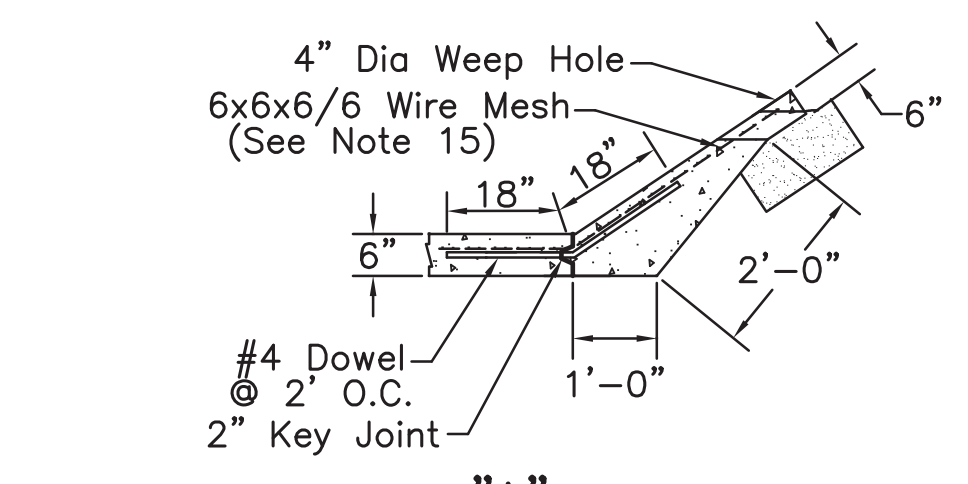
PROJECT NO.	SHEET



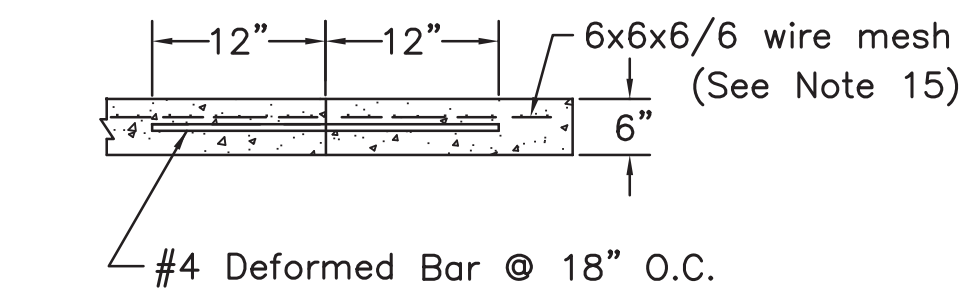
PLAN



"B" LONGITUDINAL CONSTRUCTION JOINT



"A" LONGITUDINAL CONSTRUCTION JOINT

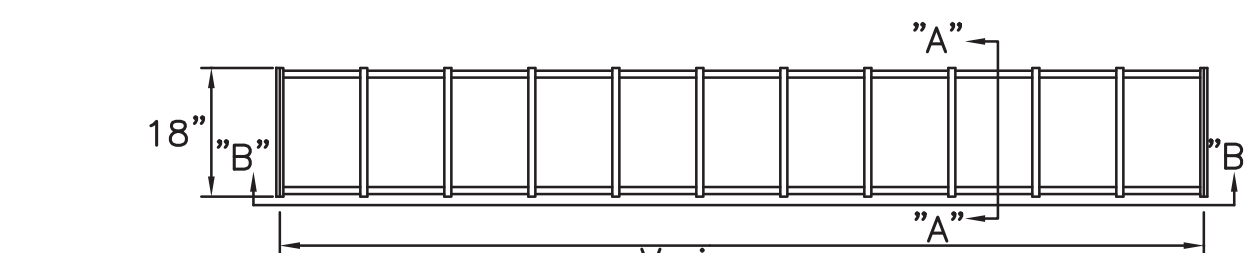


"C" SIDE SLOPE CONSTRUCTION JOINT

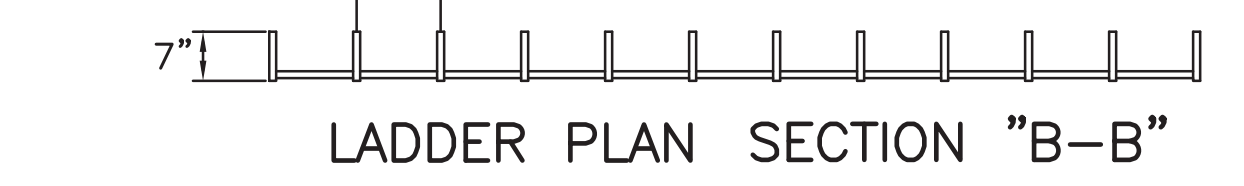
Note: Required for stagger panel construction also.

LADDER DETAILS

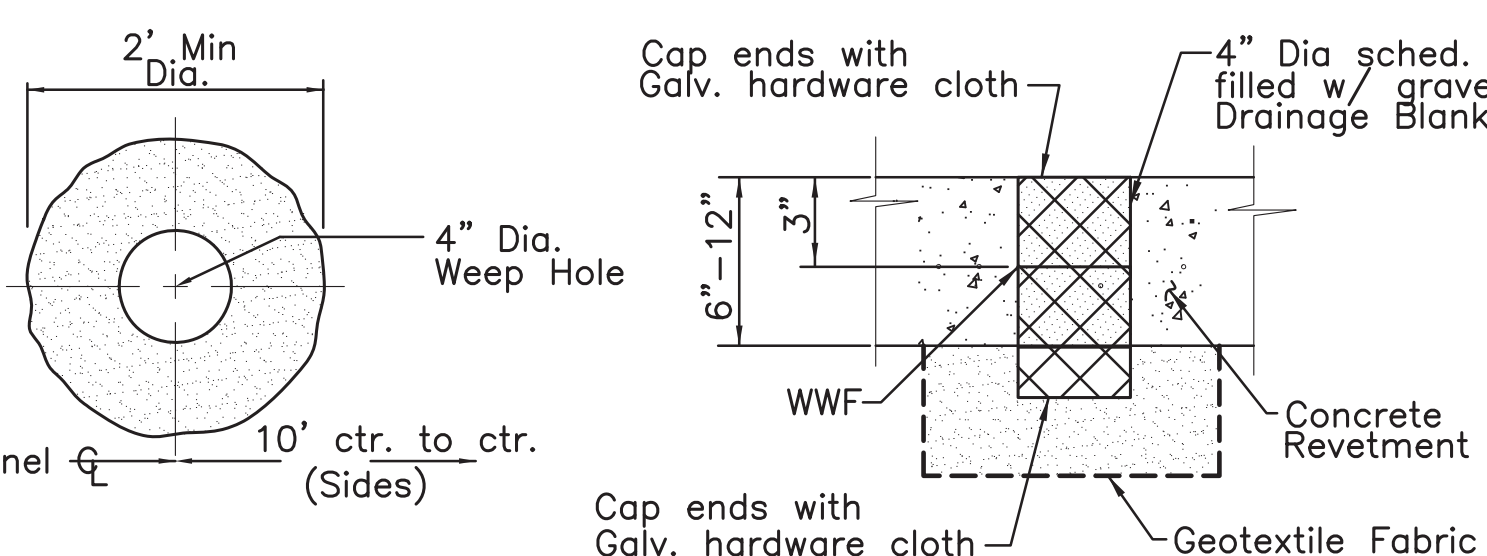
- NOTE:
1. Ladders to be located as indicated on plans (or as directed by Project Engineer).
  2. Ladder rungs shall be fabricated of wrought iron meeting the requirement of A.S.T.M. Specification A207 and shall be hot dipped galvanized.
  3. All bends shall be made hot.



LADDER PLAN



LADDER PLAN SECTION "B-B"



WEEP HOLE DETAIL "G"

Side Slope, Bottom Slab and Retaining Wall  
Note: No direct pay for weep hole

CONTINUOUS SIDEWALK TOE WALL

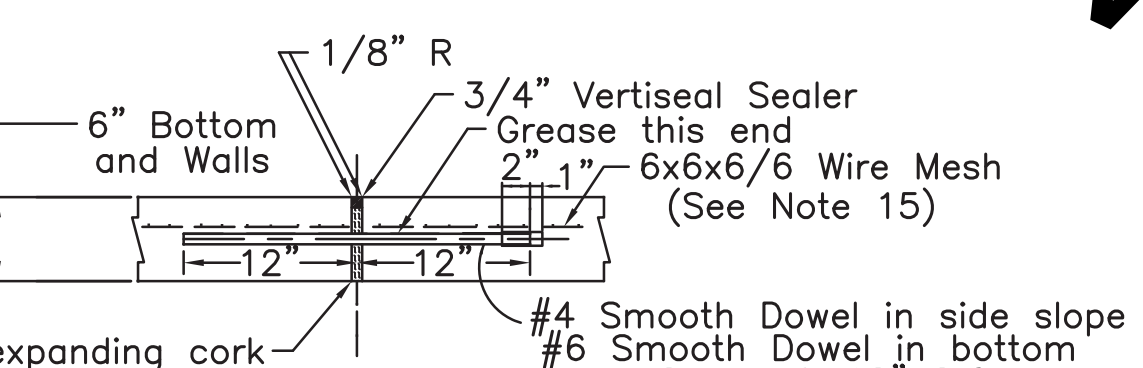
TYPICAL PIPE SUPPORT

TYPICAL PIPE SUPPORT SECTION "A-A"

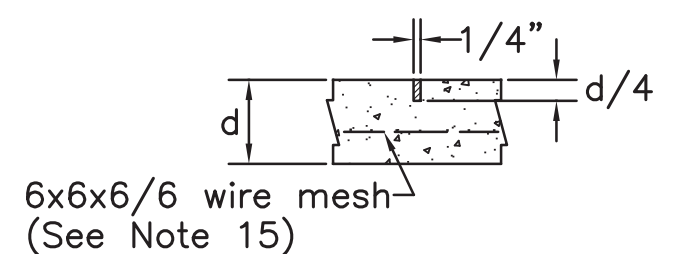
GENERAL NOTES

1. Compaction of embankments shall be accomplished by any satisfactory method approved by the project engineer. The contractor shall use mechanical tampers.
2. If no satisfactory method of compacting loose material is found, then embankment shall be stacked earth filled sacks or concrete rip-rap.
3. All concrete revetment shall be concrete class 6A4000.
4. Unless otherwise approved and directed by the engineer a granular foundation shall be used.
5. Top of lining to be adjusted if necessary to match existing ground.
6. Reinforcing steel, wire mesh and joint material used in ditch pavement to be included in price bid for concrete revetment.
7. Contractor shall dispose of excess excavation outside limits of the project. Cost to be included in price bid for channel excavation.
8. Borrow material, where req'd, shall consist of select material (A-4 or better) to be placed at locations warranted and as directed by project engineer.
9. If silty material is encountered in the side slopes of the channel section, and if so directed by the engineer, sets of weep holes shall be installed transversely across the channel rather than longitudinally down the channel. The total number of weep holes so installed shall not exceed the number that would otherwise have been installed in a longitudinal manner.
10. Expansion joint seal: prime all surfaces with 2379 primer (Grace material) or equal, allow one hour for drying time. Apply vertiseal coat 2381 (Grace material) or equal.
11. All fence posts to be set prior to installing toe wall & sidewalk. (See 704-07).
12. Required 6x6x6 welded wire mesh fabric shall conform to either ASTM A185 or ASTM A497. Welded wire mesh fabric shall only be furnished in flat sheets, rolls will not be accepted. Welded wire fabric shall be placed in accordance with detail by utilizing approved bar chairs or other approved methods.

"C" BOTTOM CONSTRUCTION JOINT

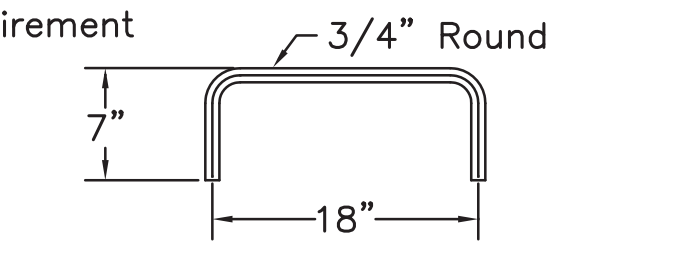


"E" TRANSVERSE EXPANSION JOINT

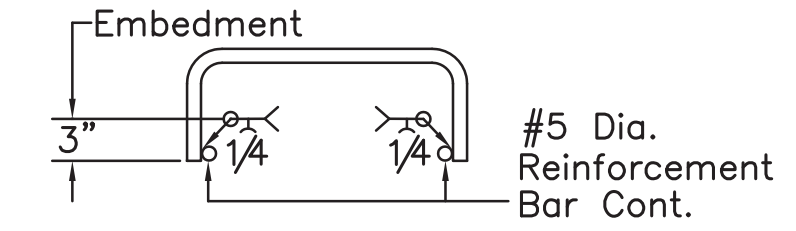


"D" DUMMY GROOVE JOINT

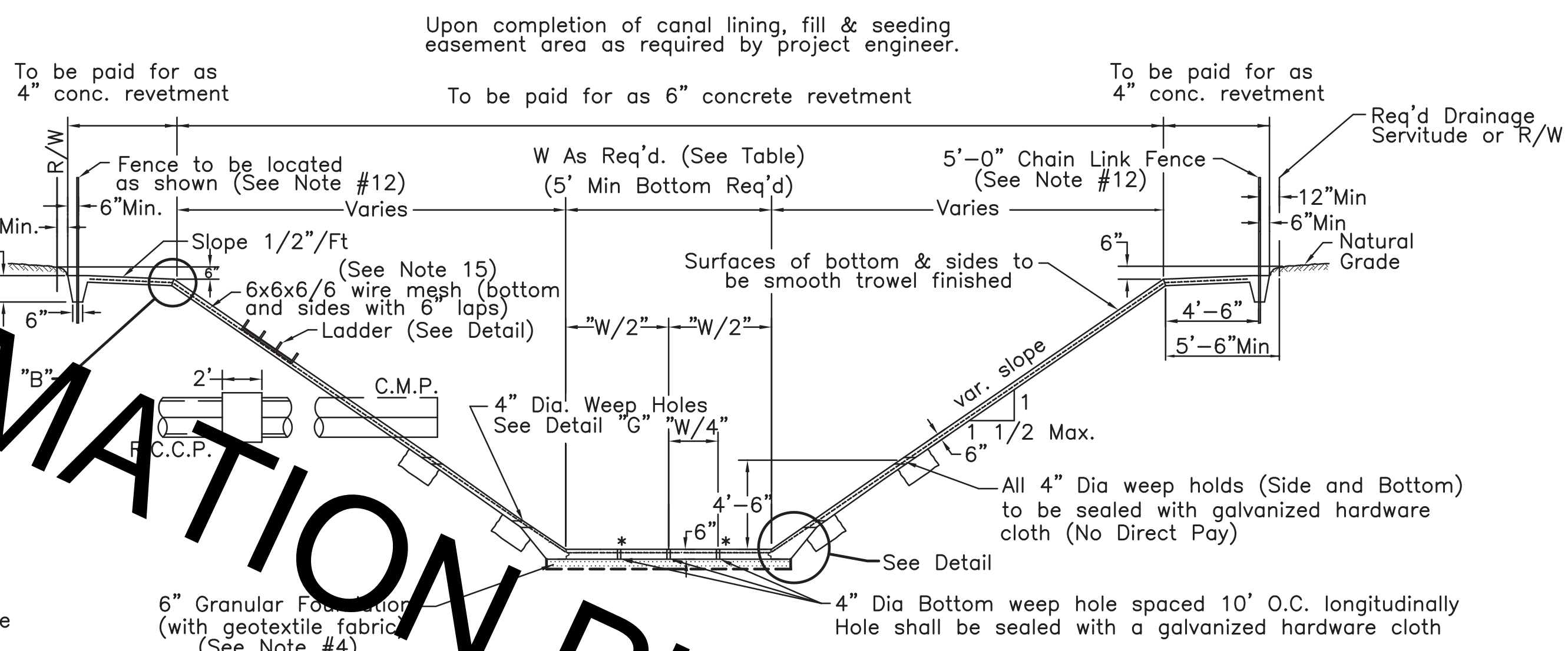
NOTE: Use for continuous monolithic panel construction only.



LADDER RUNG DETAILS

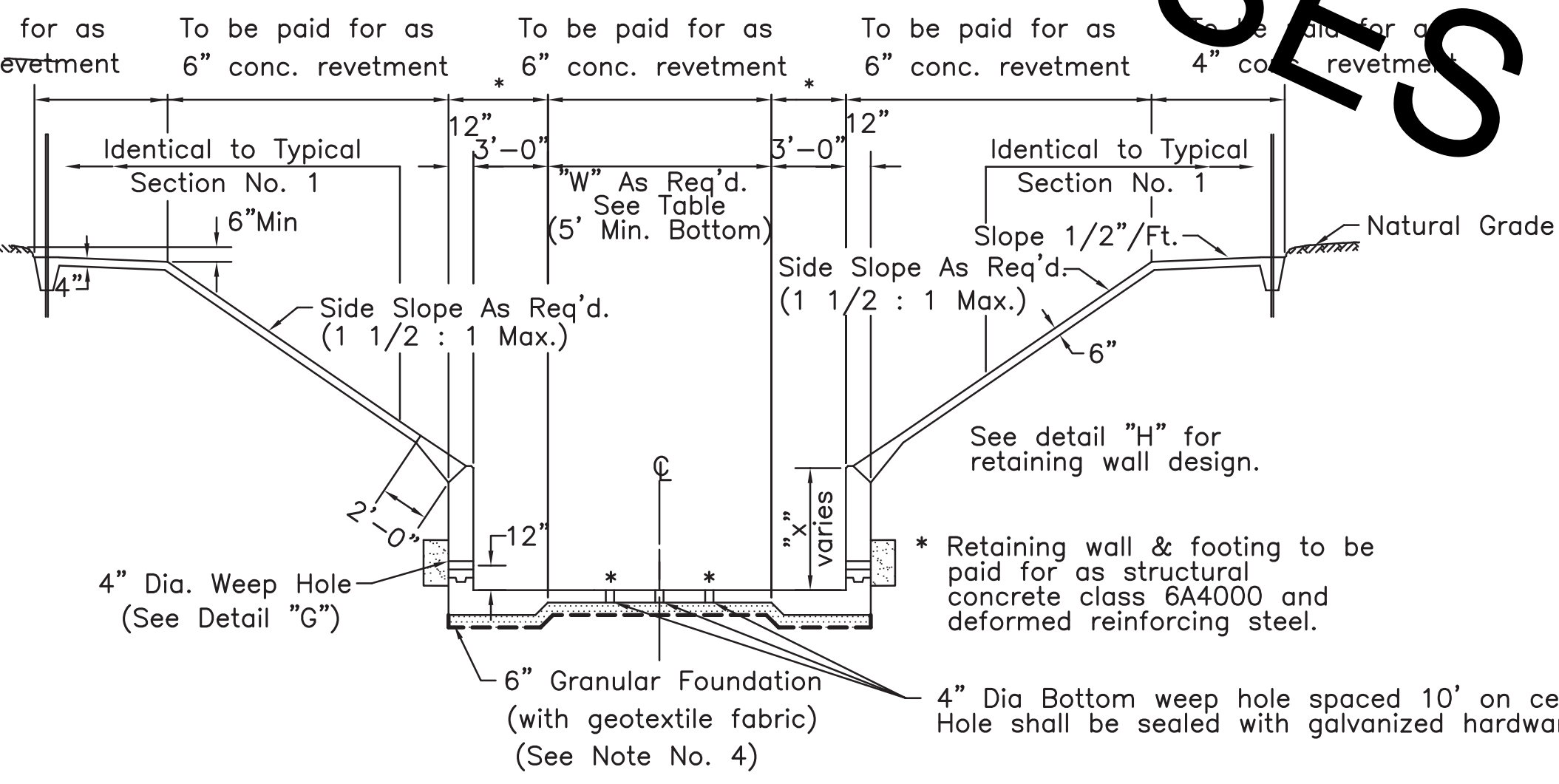


SECTION "A-A"



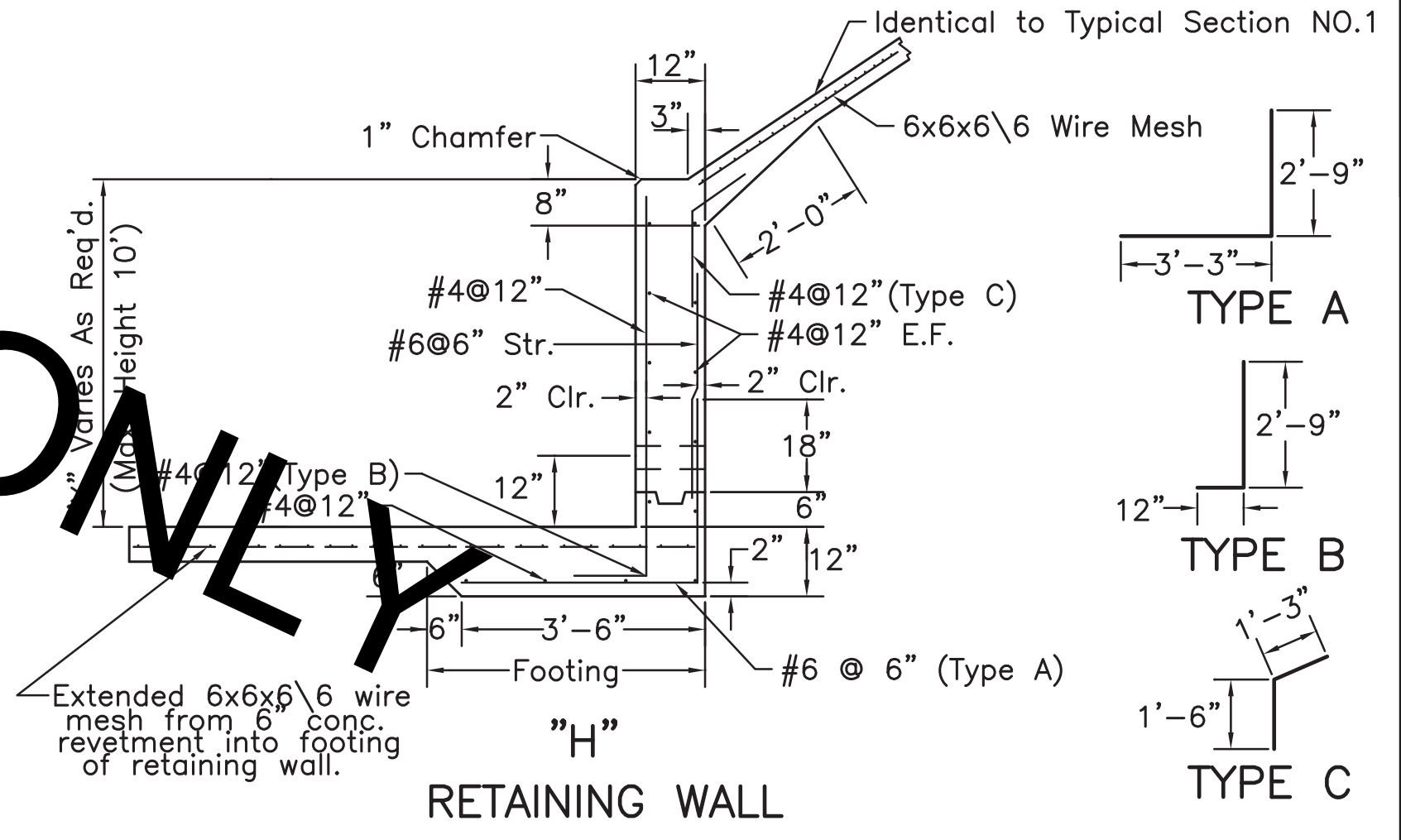
TYPICAL SECTION NO. 2

STA.	to STA.	"W"	Slope
0+00	0+00	00 ft.	0.00%
0+00	0+00	00 ft.	0.00%



TYPICAL SECTION NO. 1

STA.	to STA.	"W"	Slope
0+00	0+00	00 ft.	0.000%



RETAINING WALL

THOMAS A. STEPHENS  
Licenses No. 15417  
PROFESSIONAL ENGINEER  
IN  
STATE OF LOUISIANA  
2/16/2018

STANDARD PLAN NO. 704-05	DATED January 18, 2008	SHEET NO. 1 OF 1
-----------------------------	---------------------------	---------------------

CONCRETE CANAL LINING  
NEW CANAL LINING

ENGINEERING DIVISION DEPARTMENT OF PUBLIC WORKS CITY OF BATON ROUGE & PARISH OF EAST BATON ROUGE			
DESIGNED J.M. KLIER	DRAWN D.R. PATT	CHECKED B. HARMON	APPROVED B. HARMON

DATE	DESCRIPTION	BY