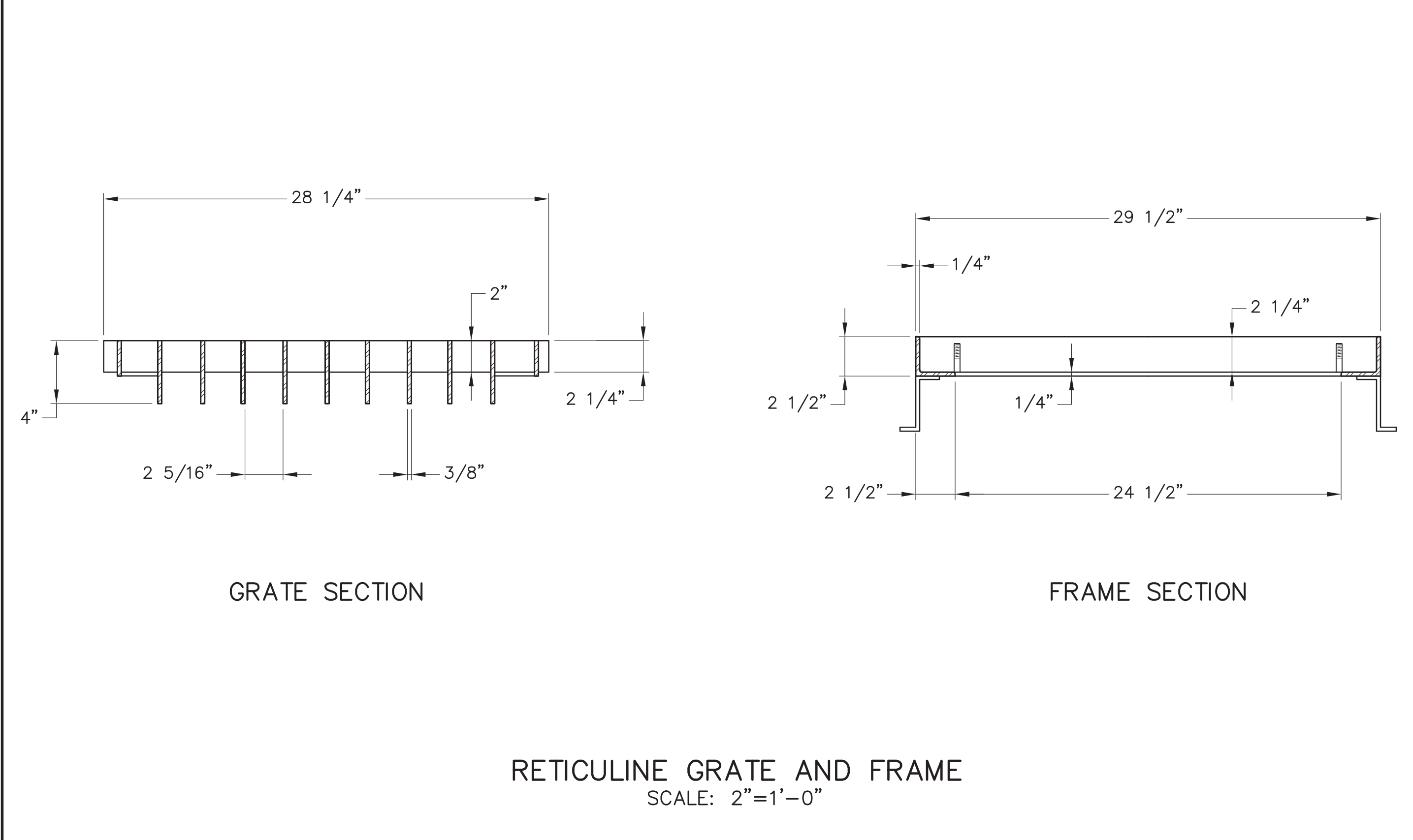
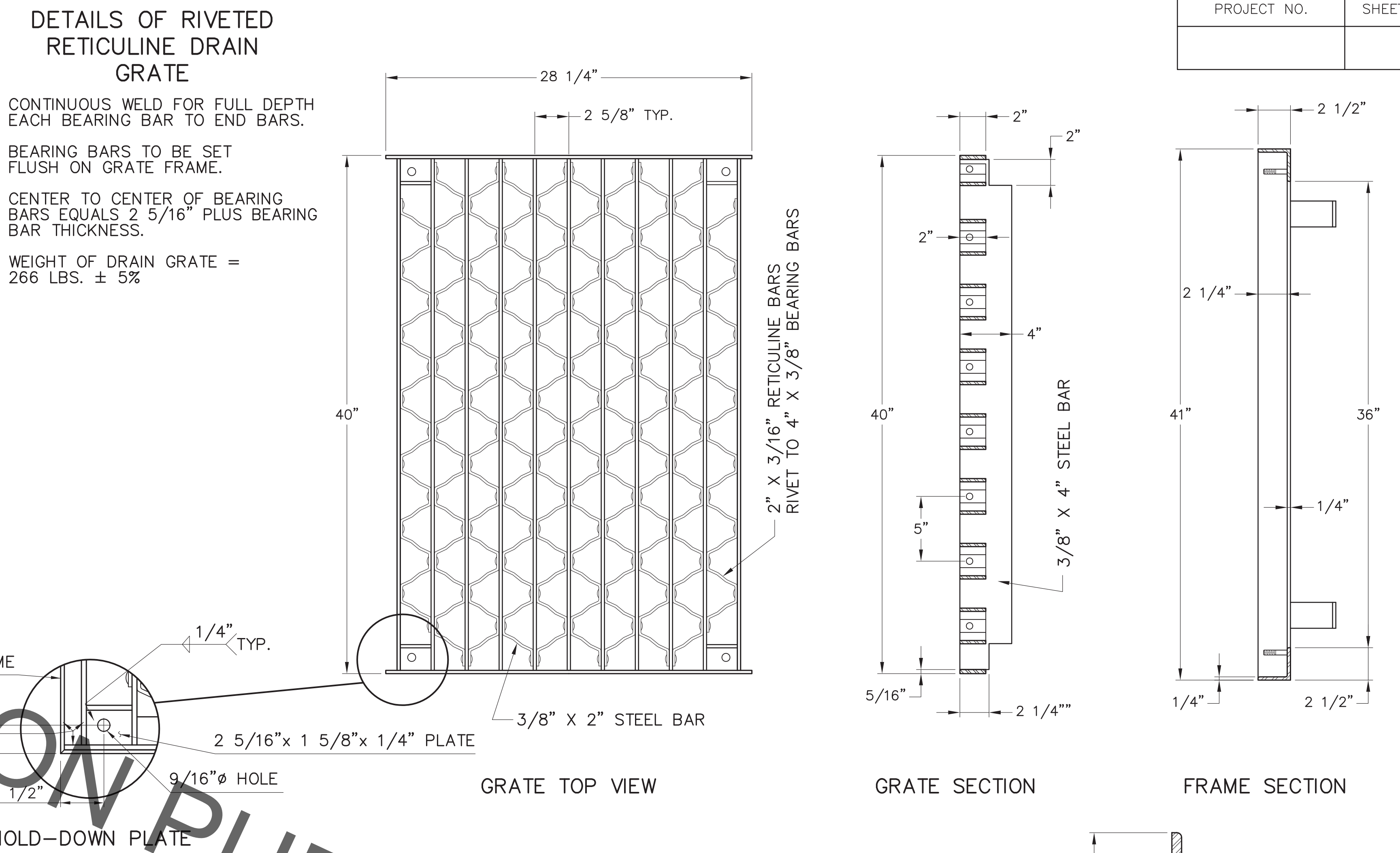
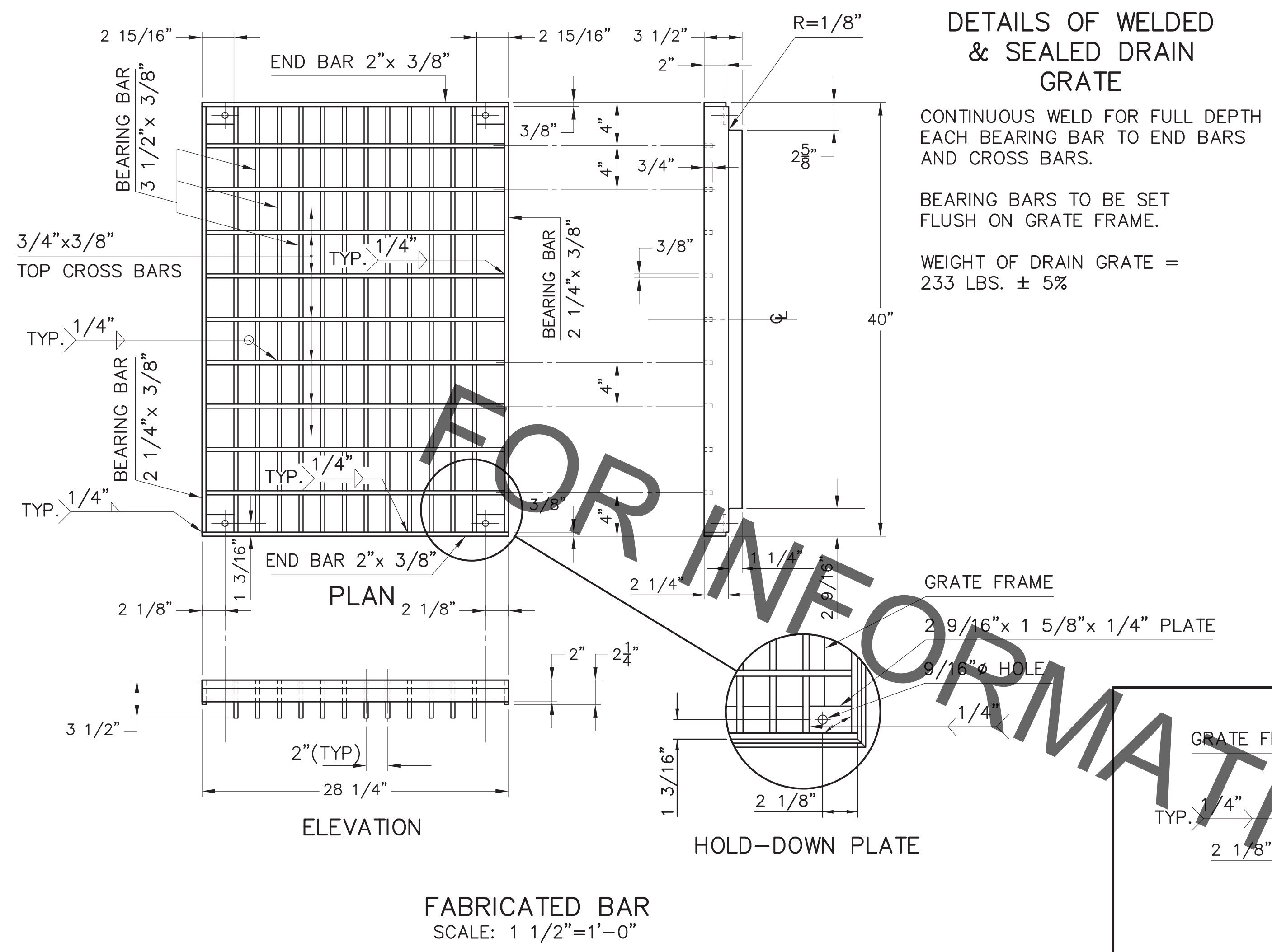
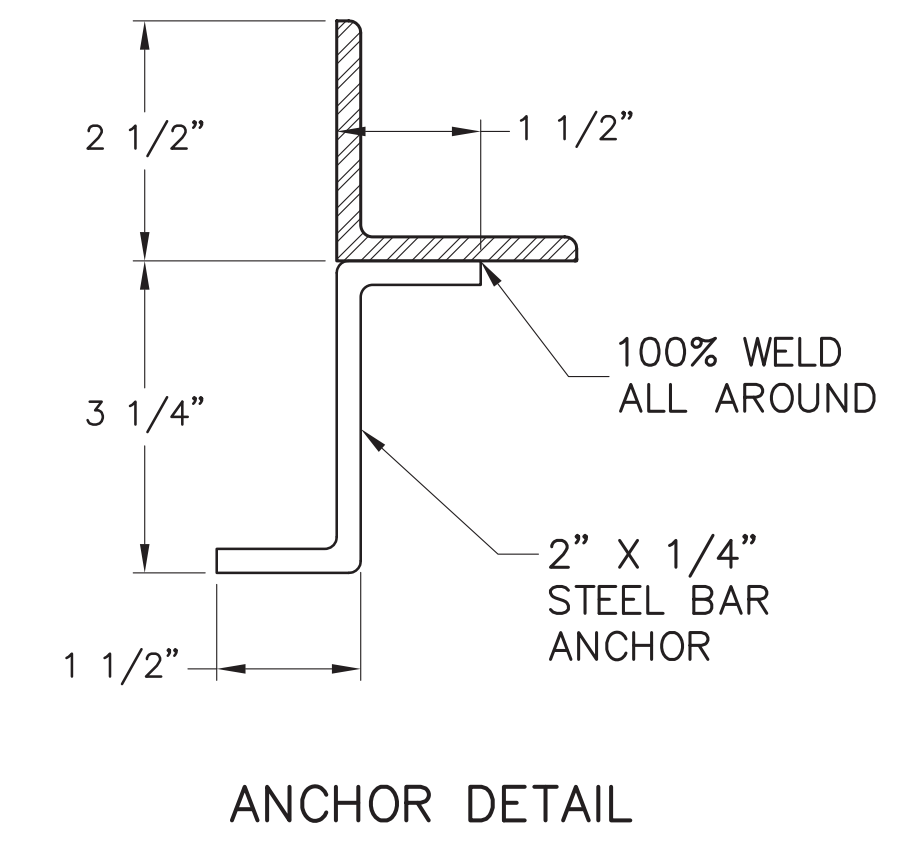


PROJECT NO.	SHEET



NOTE:
FRAME AND GRATE:
ASTM A36 STEEL, WELDED
CONSTRUCTION, HOT DIP
GALVANIZED AFTER
FABRICATION.
(GALVANIZE PER ASTM A123)



STATE OF LOUISIANA
THOMAS A. STEPHENS
License No. 15417
PROFESSIONAL ENGINEER
IN
CIVIL ENGINEERING
2/16/2018

EJIW PRODUCT #44863061
USF 6672-6673
OR APPROVED EQUAL

STANDARD PLAN No. 702-99	DATED AUGUST 11, 2008	SHT. No. 2 OF 3
-----------------------------	--------------------------	--------------------

FRAMES, GRATES AND COVERS
FOR INLETS AND MANHOLES
(TYPE 2)

ENGINEERING DIVISION DEPARTMENT OF PUBLIC WORKS CITY OF BATON ROUGE & PARISH OF EAST BATON ROUGE			
DESIGNED G. CHENG	DRAWN G. VANNICE	CHECKED G. CHENG	APPROVED T. STEPHENS

3/28/12	ADD USF PRODUCT NUMBER.	G. L. P.
DATE	DESCRIPTION	BY
	REVISION	