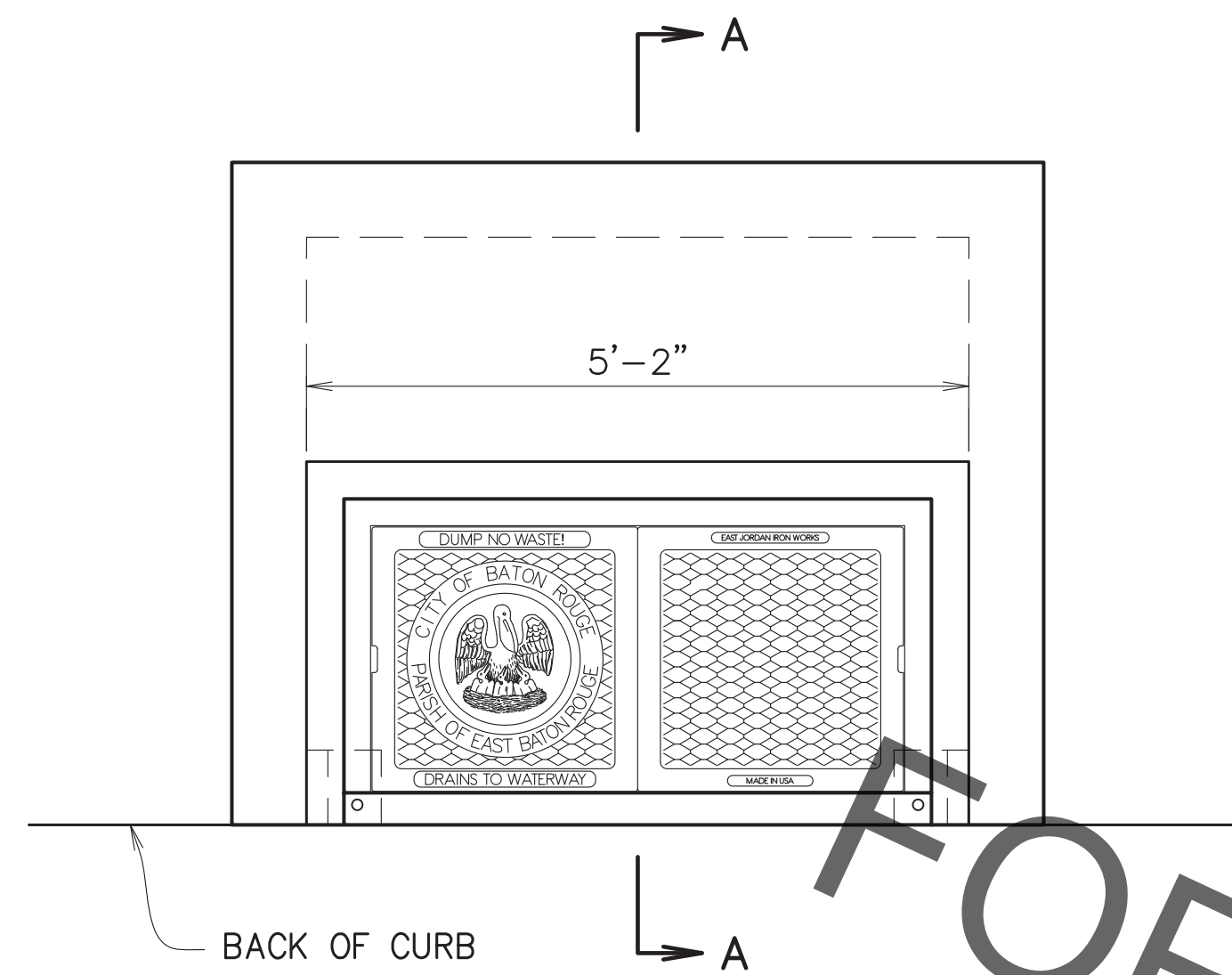
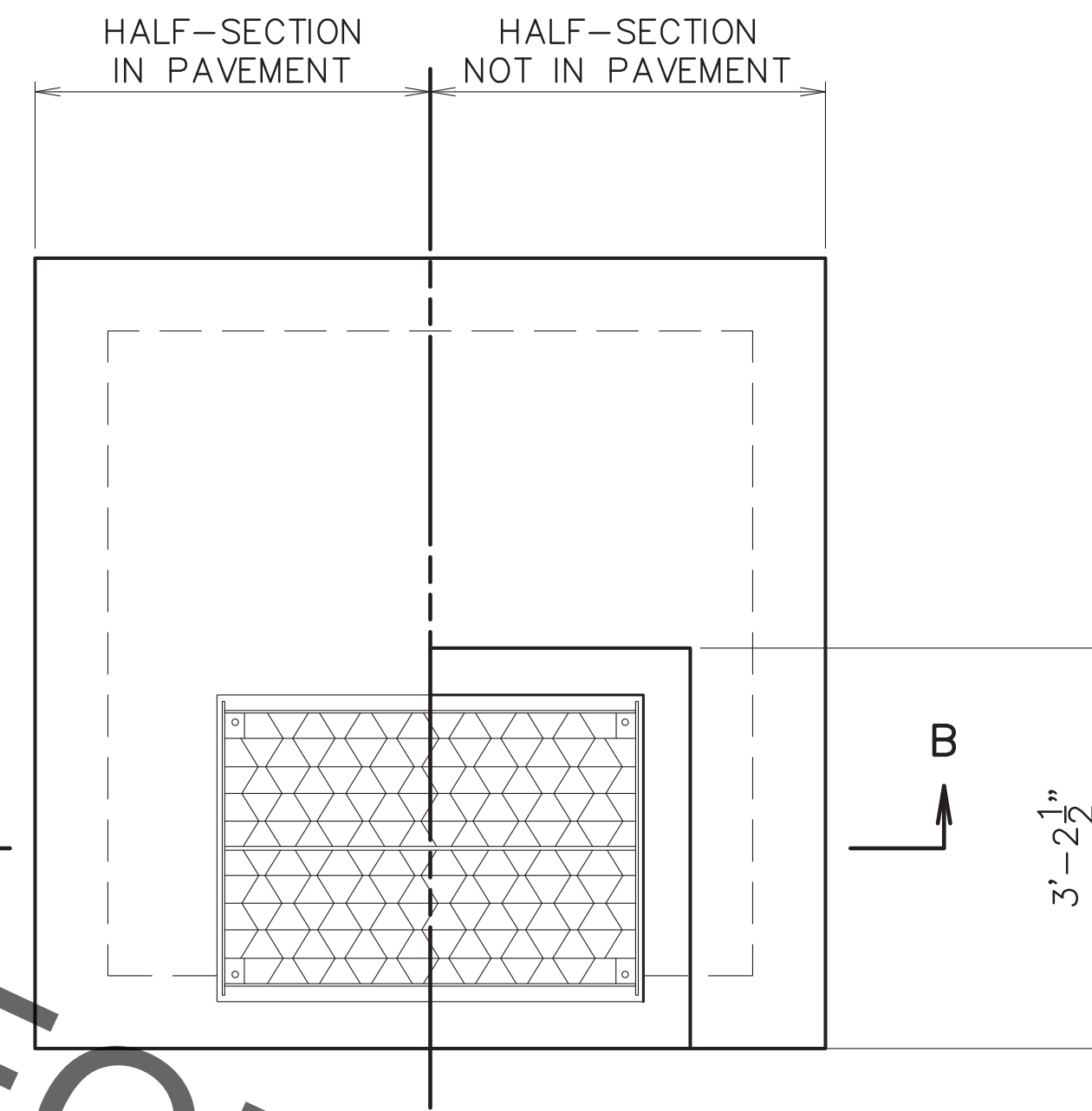


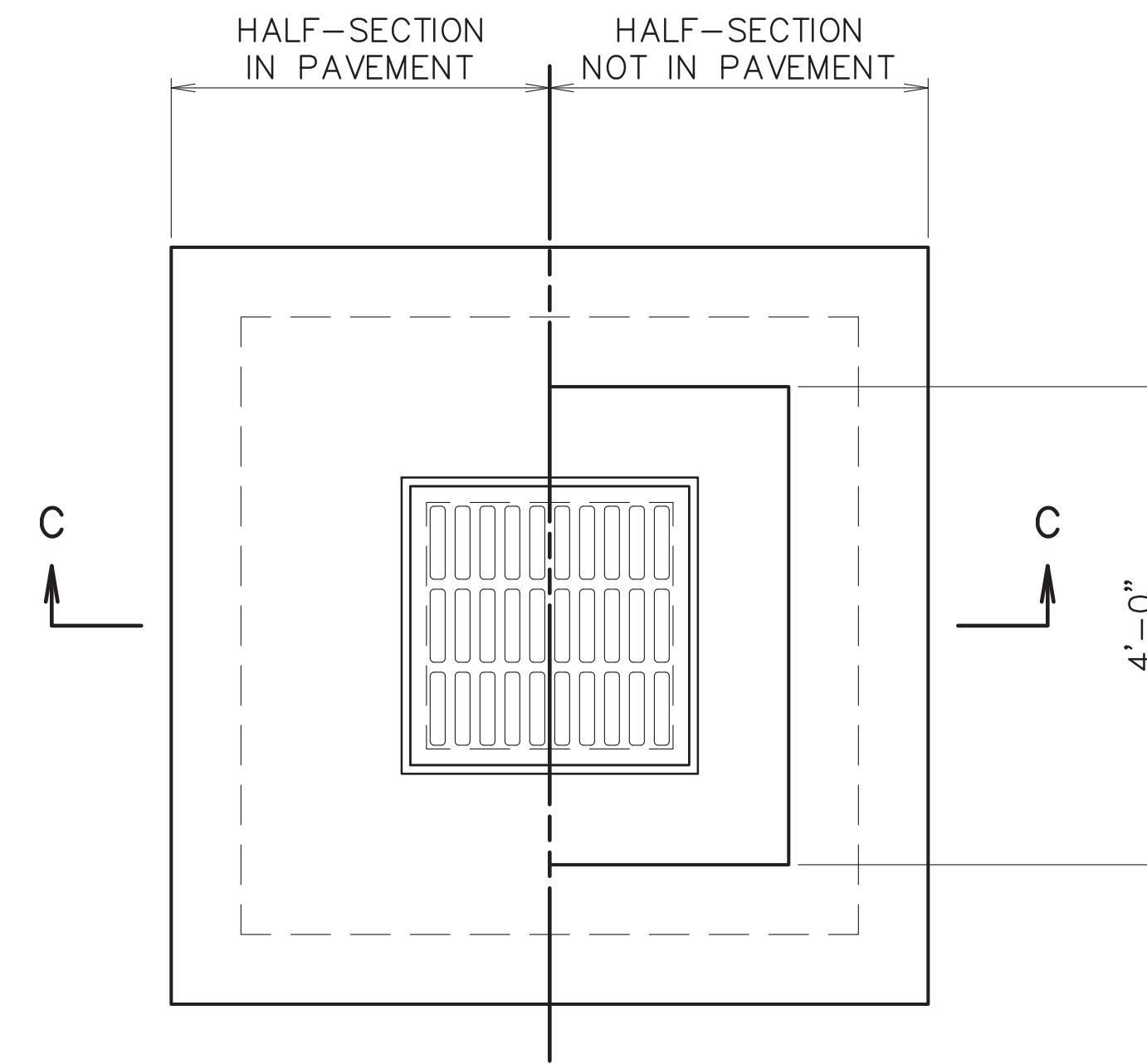
PROJECT NO.	SHEET



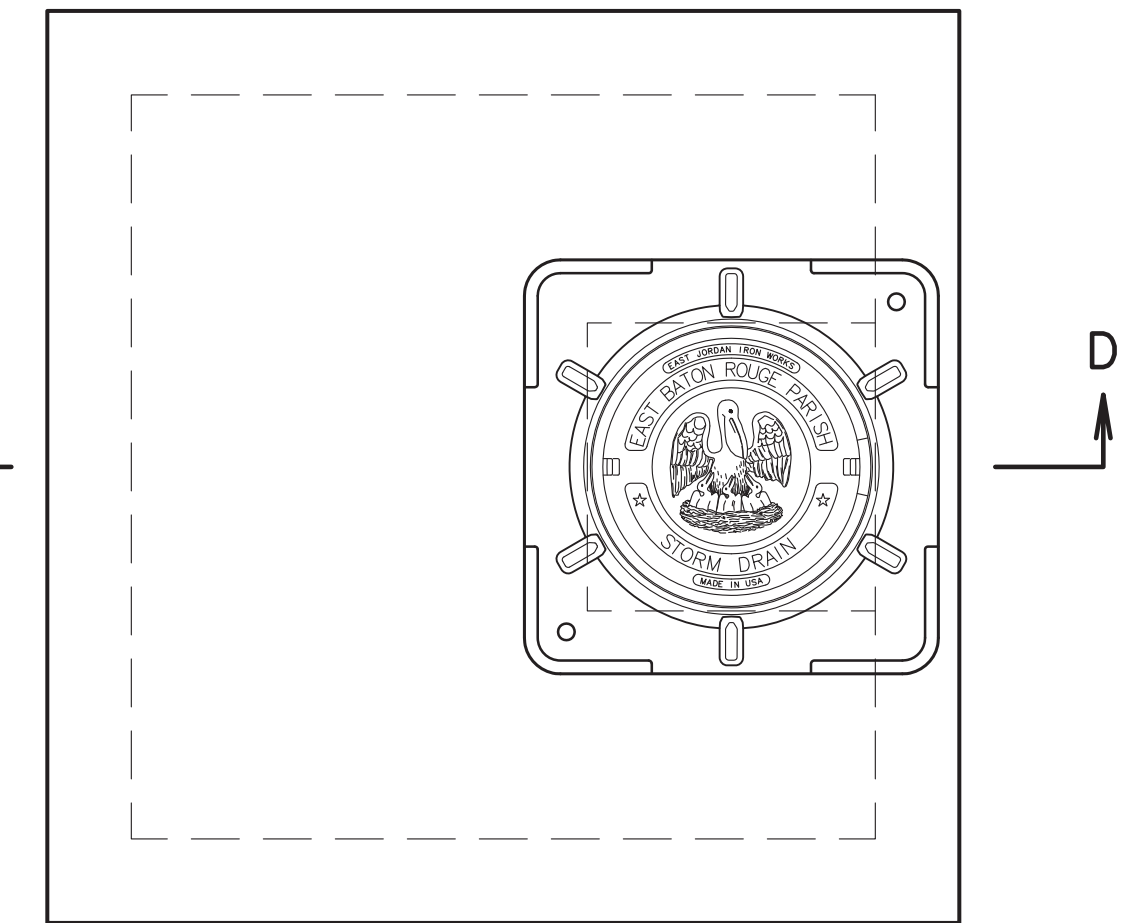
CURB INLET TOP VIEW
TYPE 1 CURB INLET WITH FRAME
SCALE: 3/4"=1'-0"



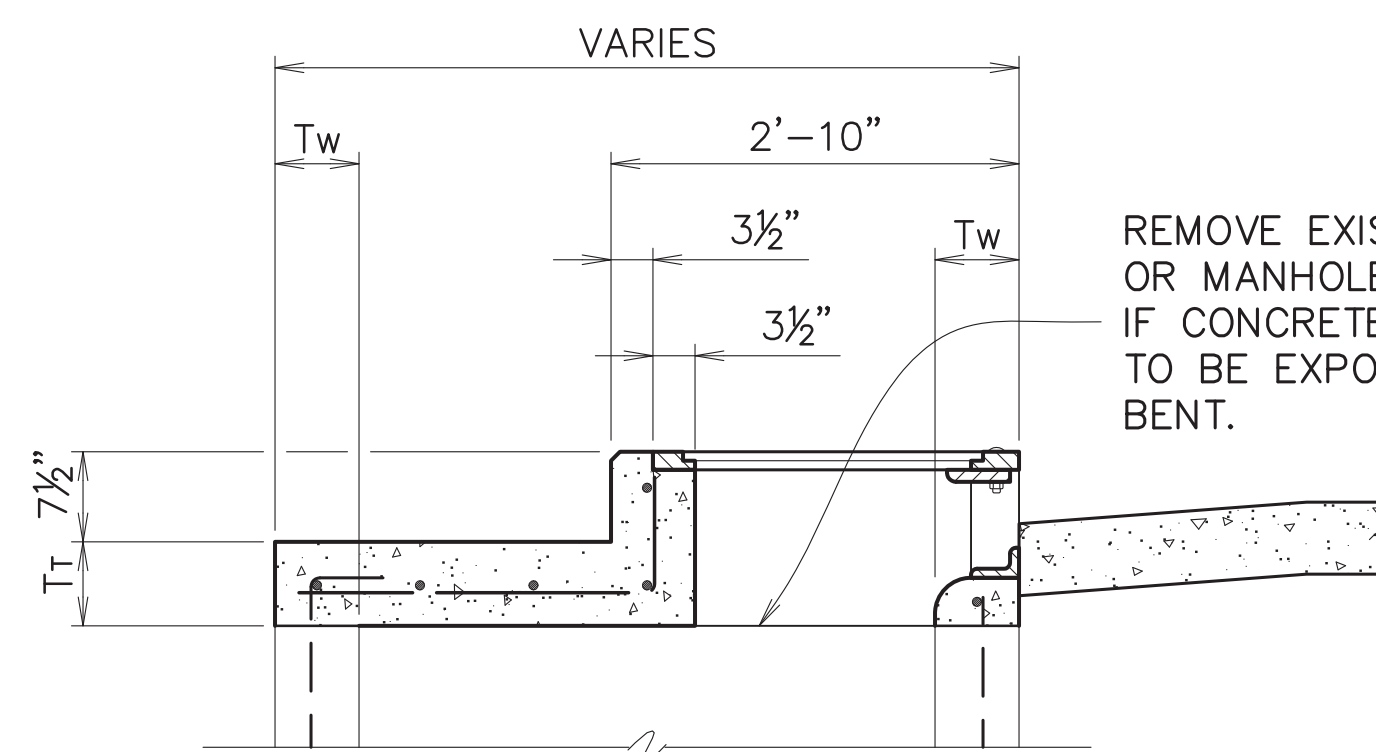
RETICULINE GRATE TOP VIEW
TYPE 2
RIVETED RETICULINE GRATE WITH FRAME
SCALE: 3/4"=1'-0"



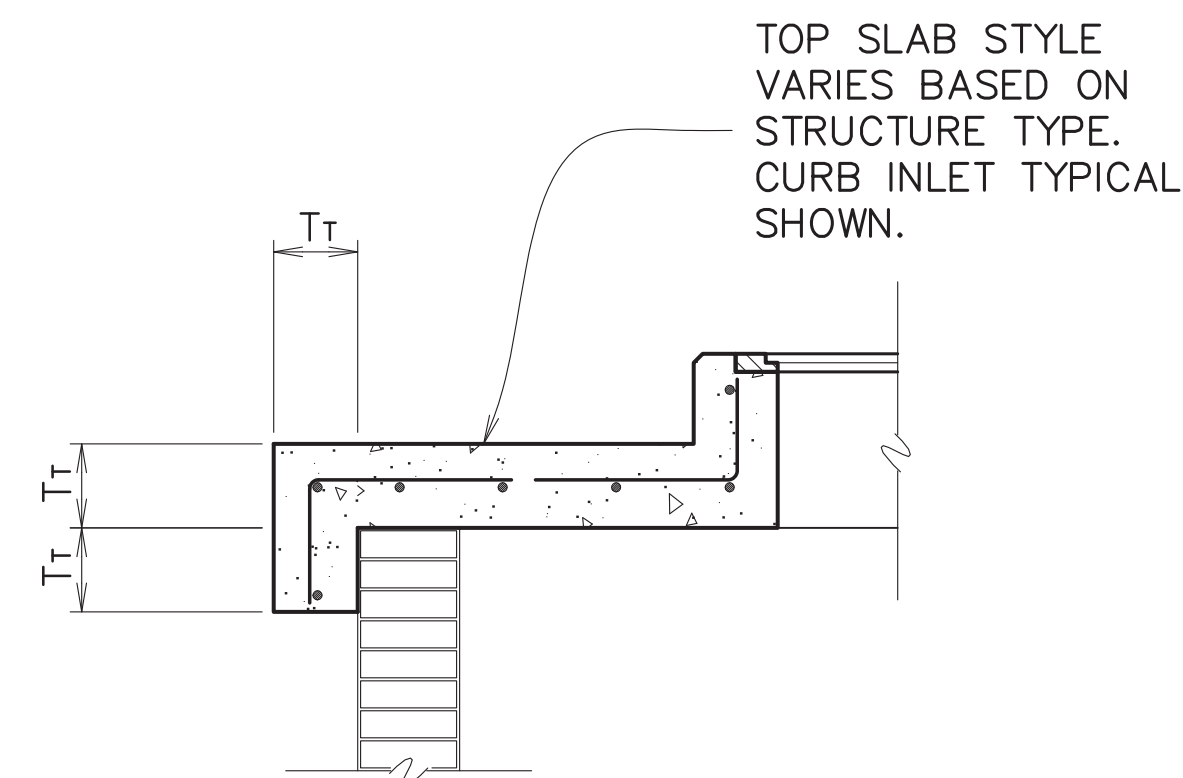
BAR GRATE TOP VIEW
TYPE 3
CAST IRON GRATE WITH FRAME
SCALE: 3/4"=1'-0"



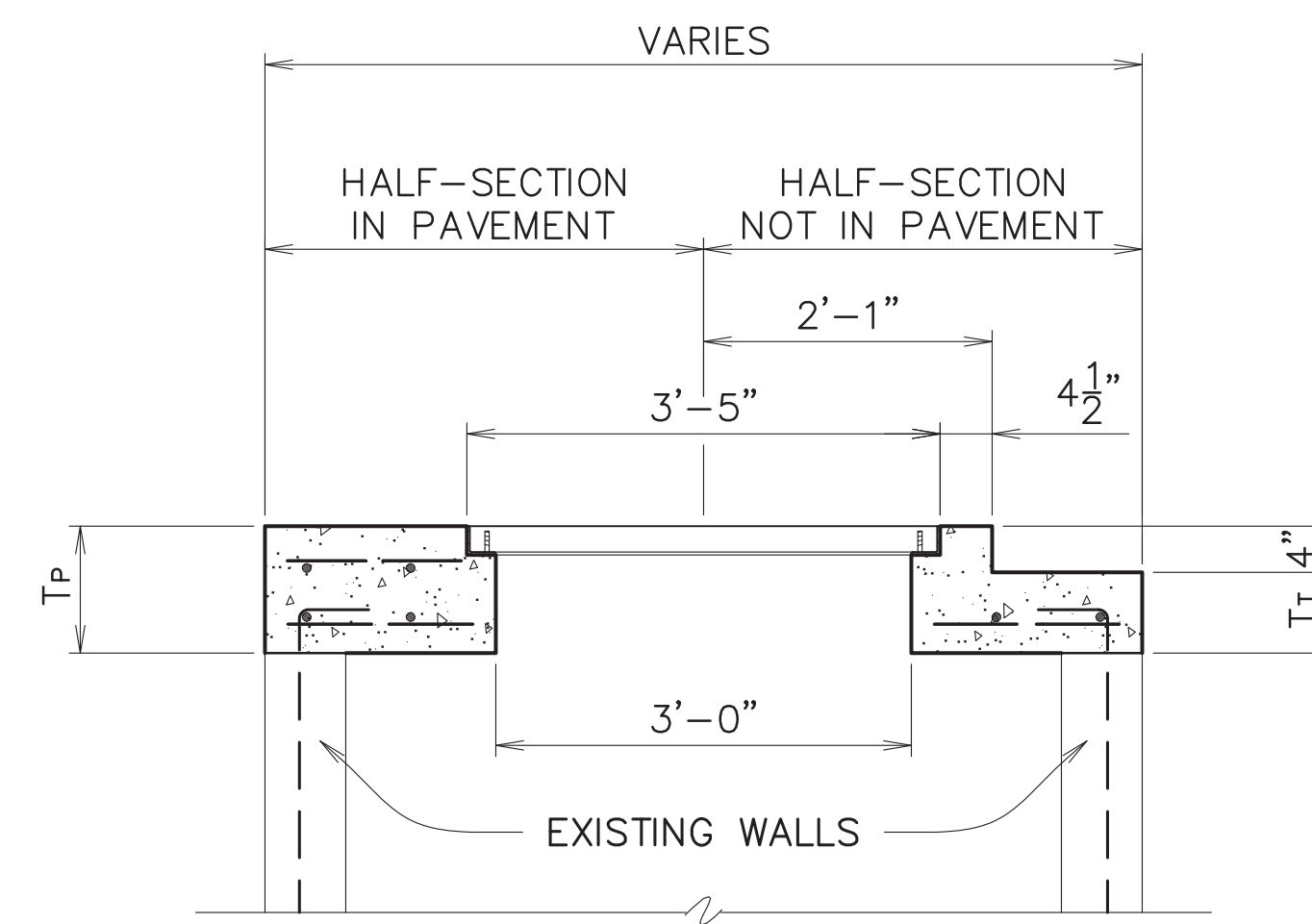
MANHOLE PLAN TOP VIEW
TYPE 9 MANHOLE ACCESS COVER
SCALE: 3/4"=1'-0"



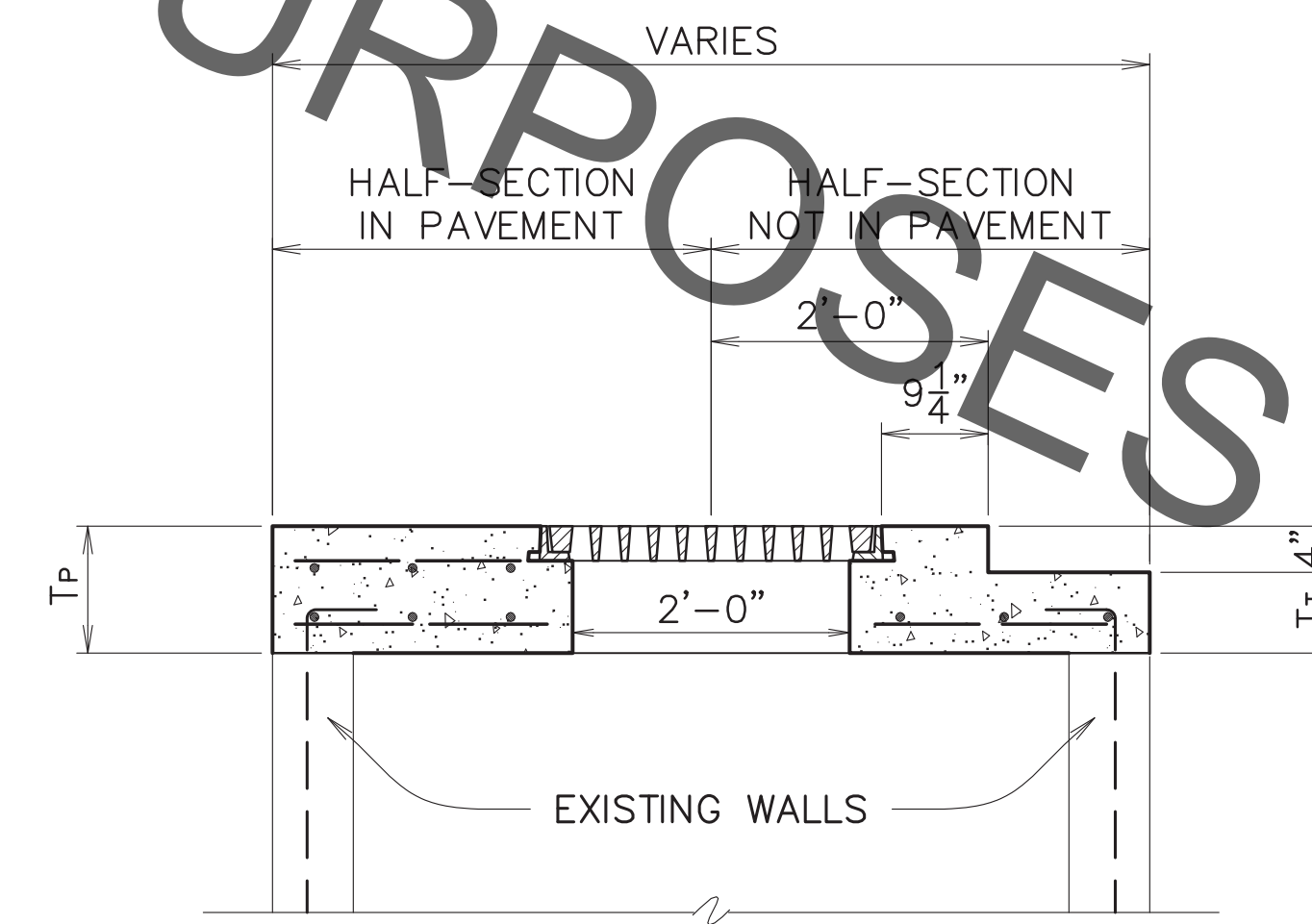
SECTION A-A
SCALE: 3/4"=1'-0"



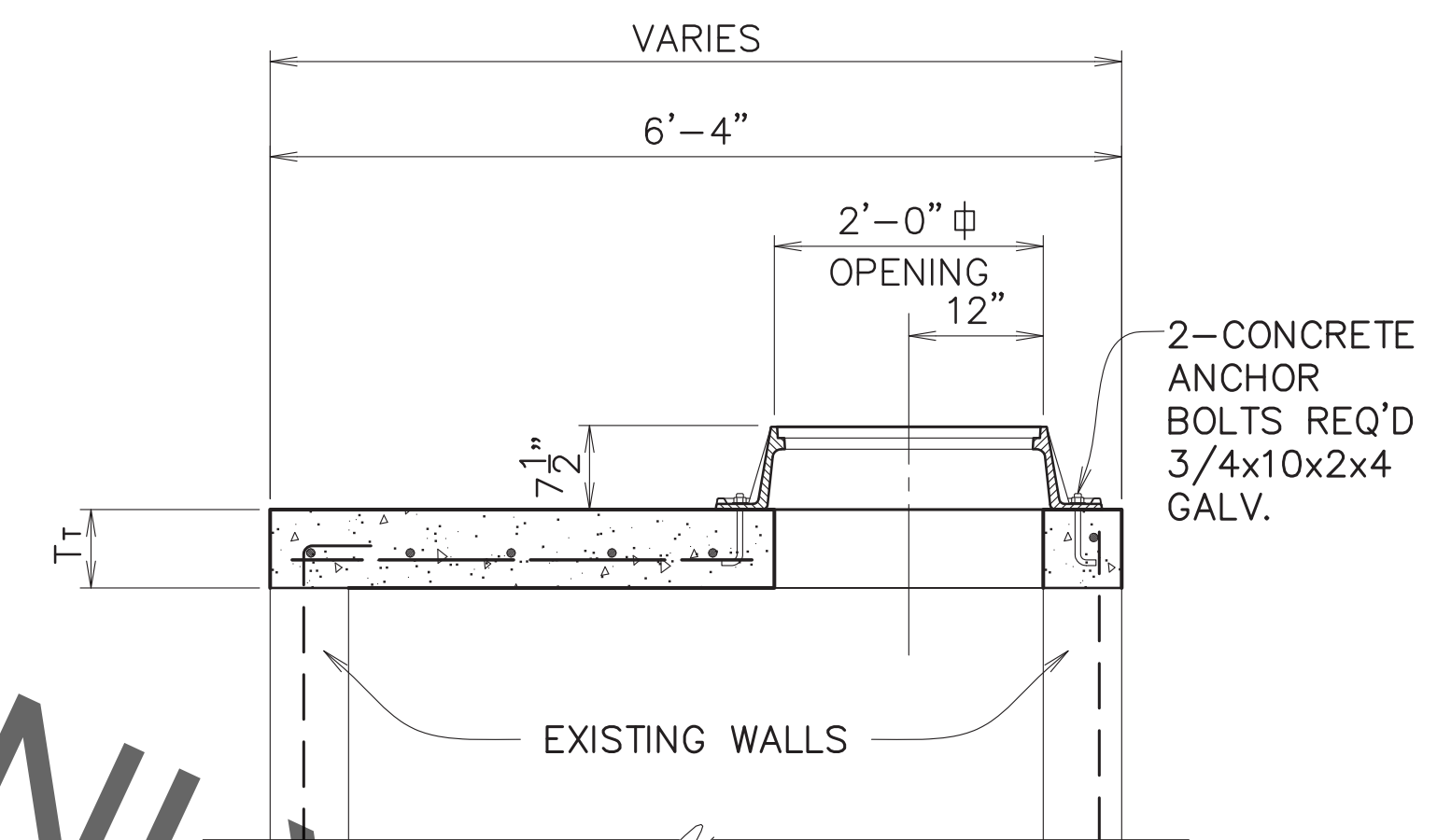
COLLAR
TYPICAL BRICK WALL CONNECTION DETAIL
SCALE: 3/4"=1'-0"



SECTION B-B
SCALE: 3/4"=1'-0"

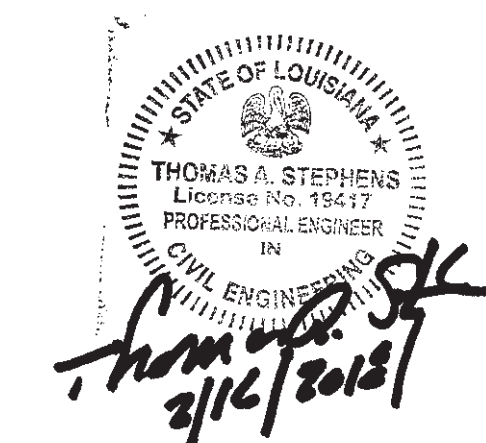


SECTION C-C
SCALE: 3/4"=1'-0"



SECTION D-D
SCALE: 3/4"=1'-0"

- NOTE:**
- SEE STANDARD PLAN 702-99 FOR FRAME AND COVER DETAILS. FRAME AND COVER TYPE AS SHOWN.
 - SEE STANDARD PLAN 702-96 FOR THICKNESS, REINFORCING STEEL, AND OTHER STRUCTURAL DETAILS.
 - SEE STANDARD PLAN 702-98 FOR CURB TRANSITION DETAILS.
 - JOINTS BETWEEN STRUCTURAL ELEMENTS SHALL BE TREATED WITH TYPE II EPOXY BONDING AGENT WHEN BONDING TO EXISTING CONCRETE.



DATE	DESCRIPTION	BY
	REVISION	

STANDARD PLAN No.	DATED	SHT. No.
702-51	DEC. 6, 2010	1 OF 1
CONVERSION OF EXISTING INLET OR MANHOLE		
ENGINEERING DIVISION DEPARTMENT OF PUBLIC WORKS CITY OF BATON ROUGE & PARISH OF EAST BATON ROUGE		
DESIGNED GLP	DRAWN GLP	CHECKED GLP
APPROVED T. STEPHENS		