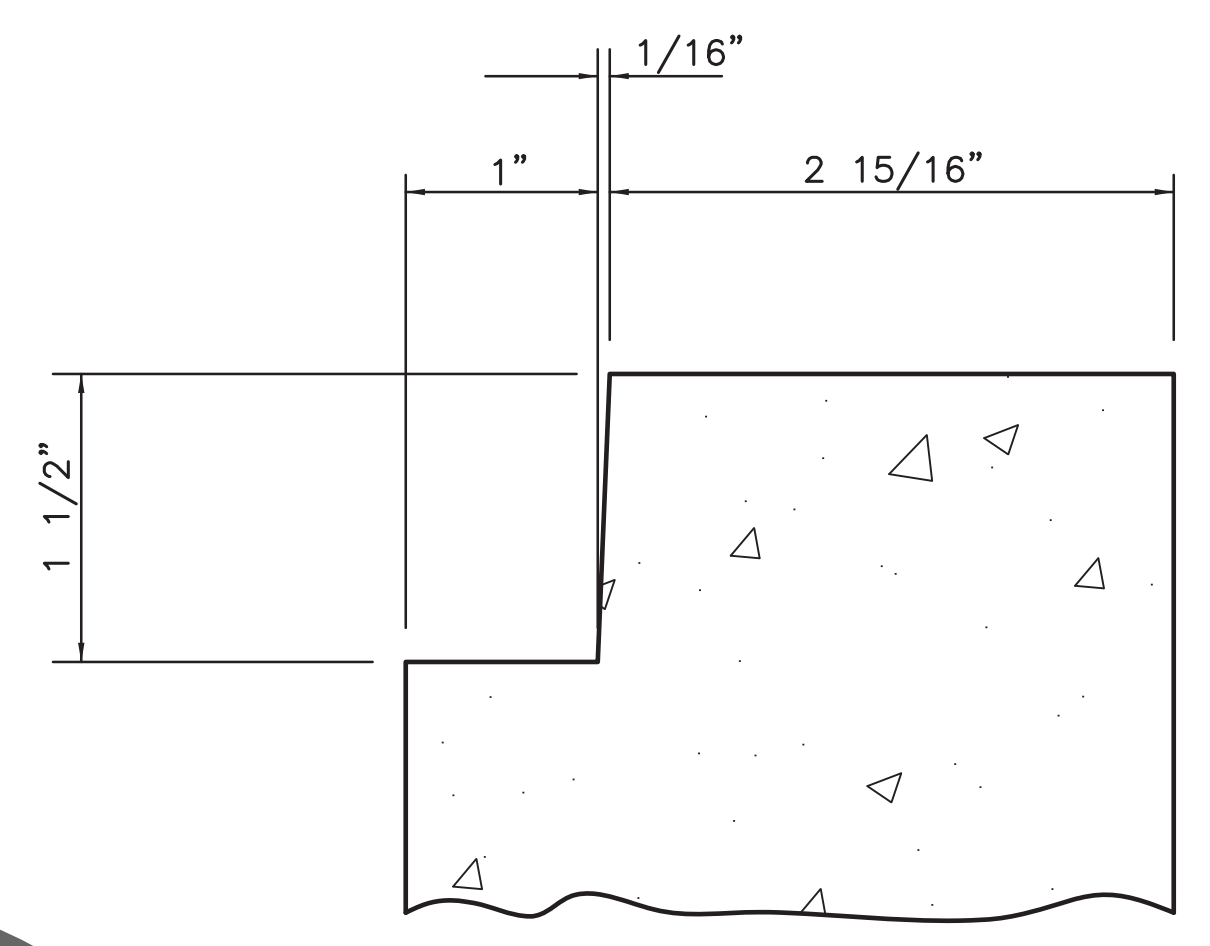
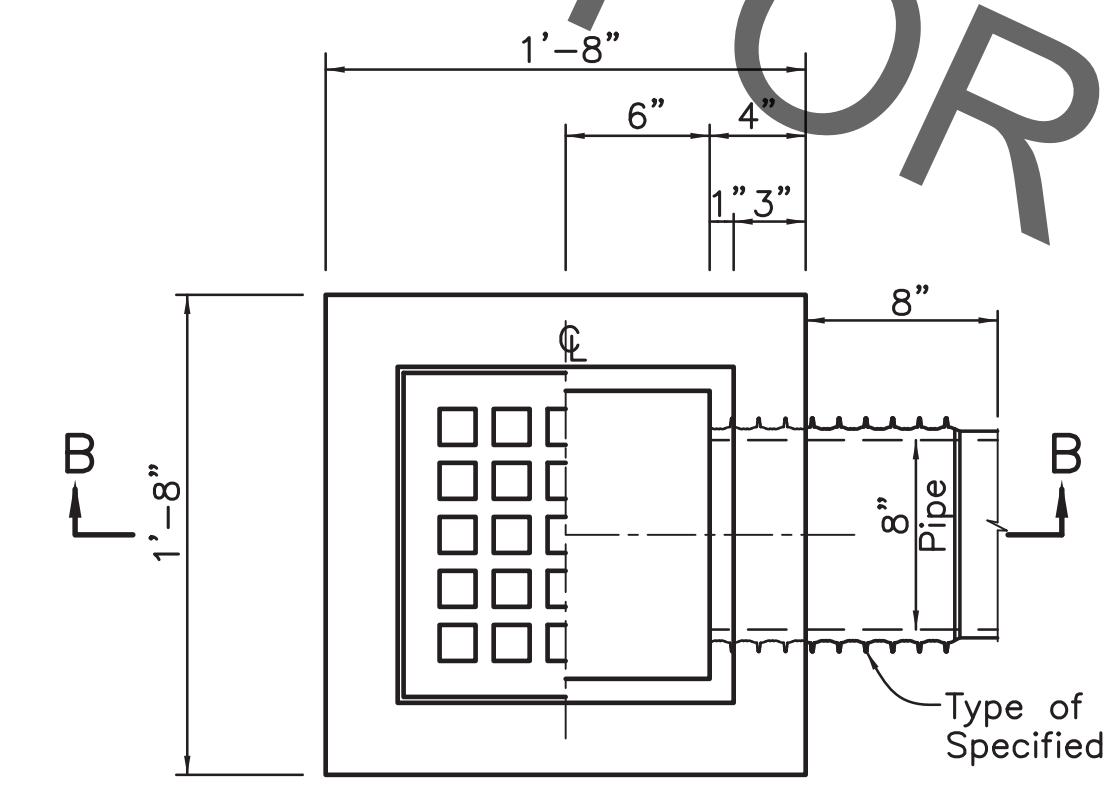


PROJECT NO.	SHEET



INSET "A"  
(Typical)

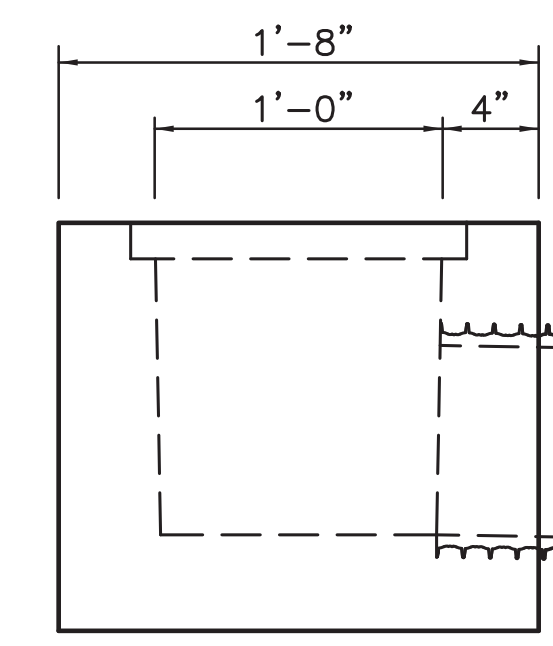


PLAN

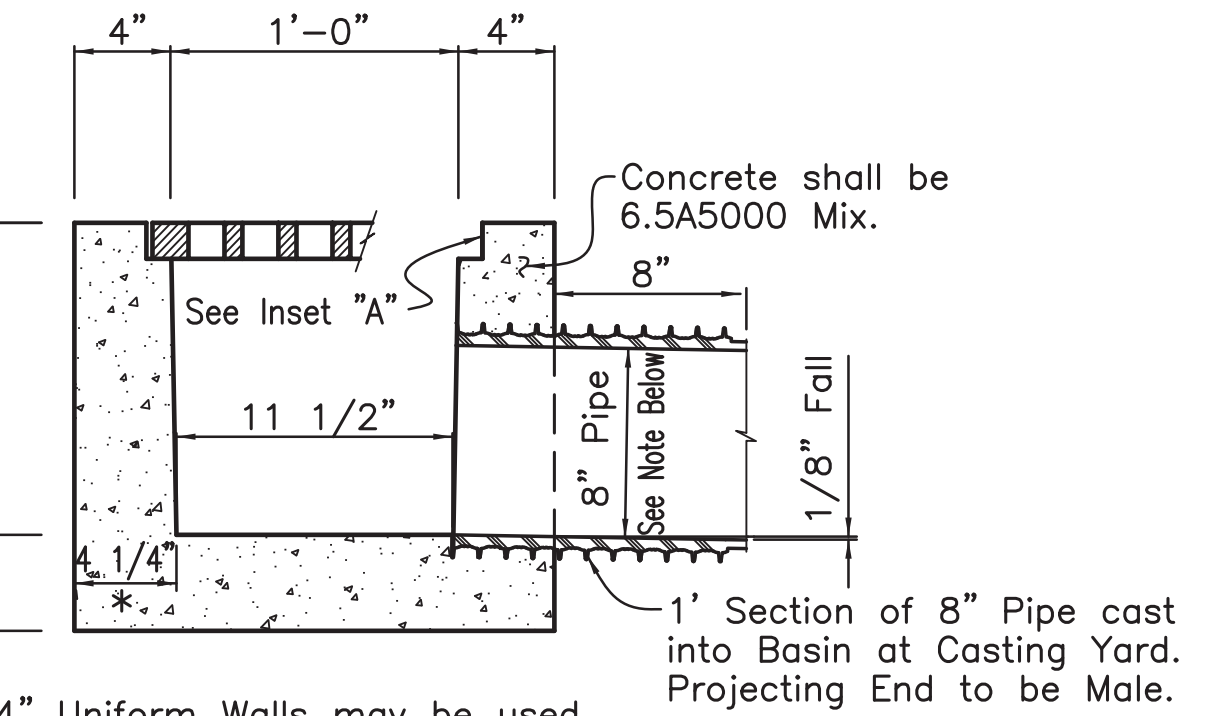
Weight Approx. 460 lbs. plus Grate

PRECAST OPTION

Notes:  
Concrete to be Class "P"  
Catch Basin to be supplied complete,  
including C.I. Grate.  
The Catch Basin Supplier shall be  
responsible for Selection and Placement  
of any Pick-up and Handling Devices.  
Setting Tolerance to be +0 & -1/8"



ELEVATION

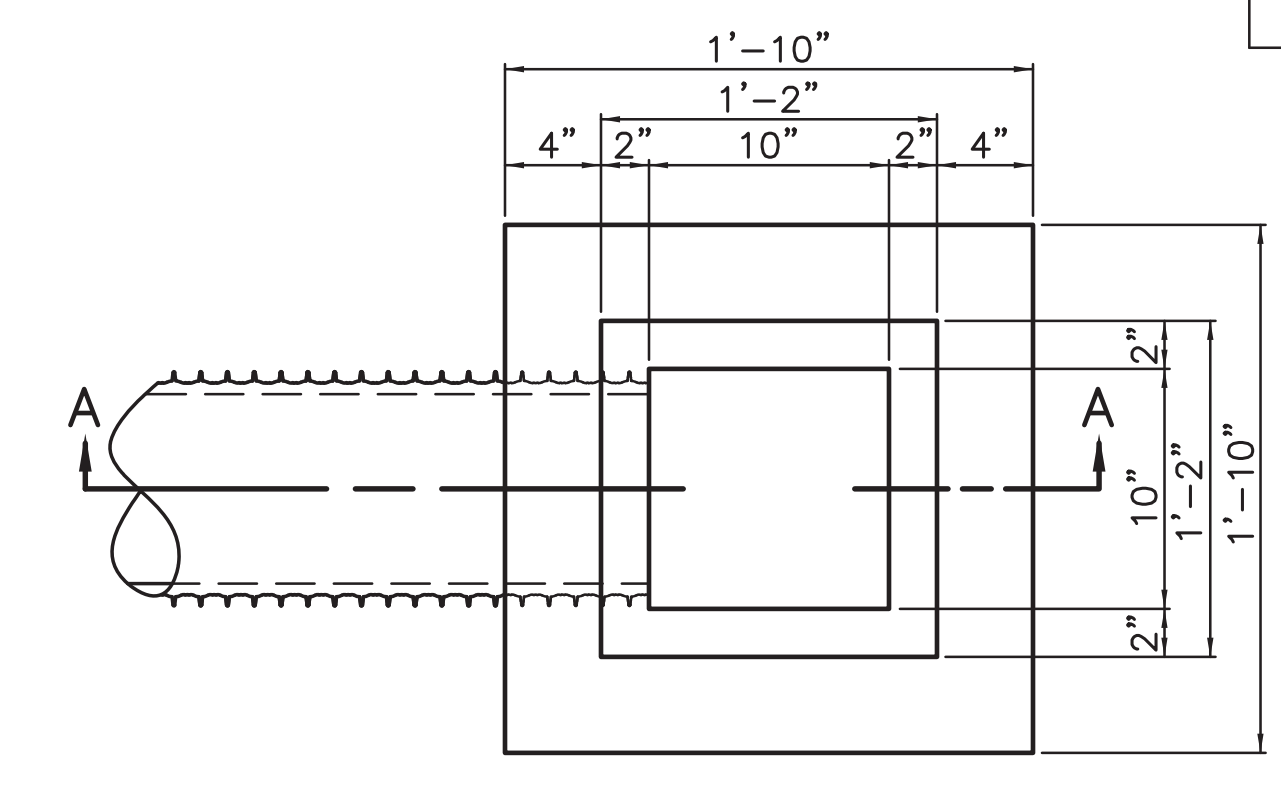


SECTION B-B

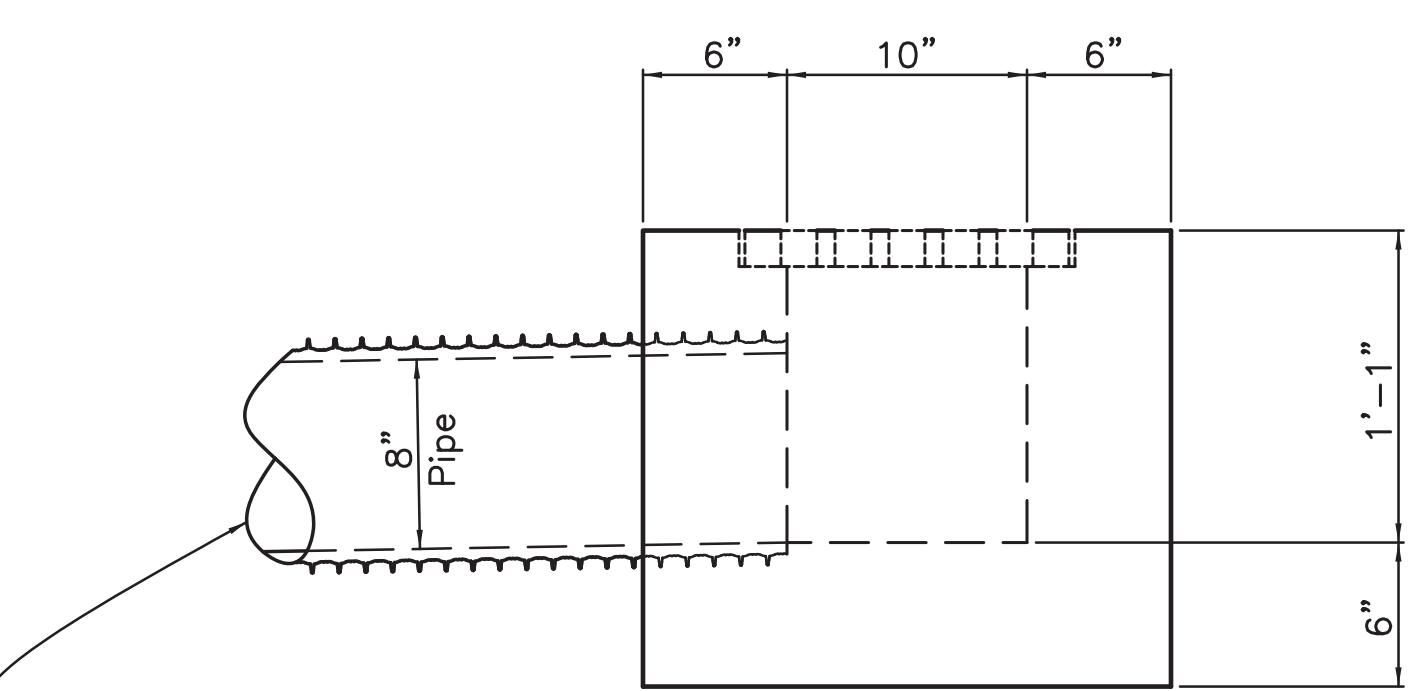
\* 4" Uniform Walls may be used,  
at Suppliers Option.

CAST-IN-PLACE OPTION

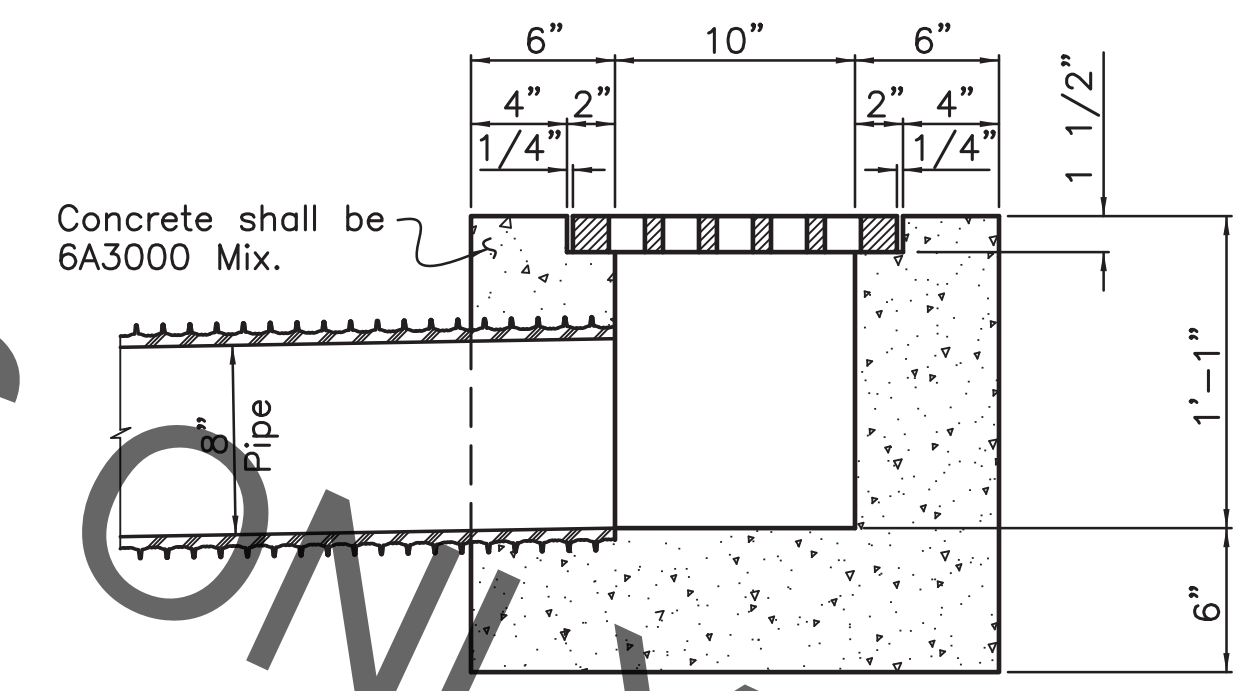
Class "A" Concrete



PLAN  
Grate not Shown



ELEVATION

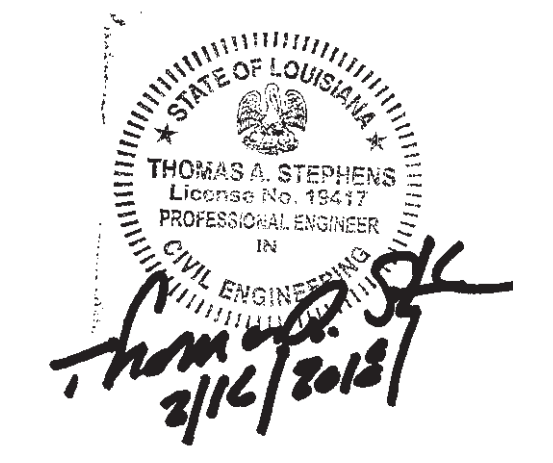


SECTION A-A

NOTES:

1. SEE STANDARD PLAN 702-99 FOR FRAME COVER DETAILS.
2. PRECAST CONCRETE INLETS CONFORMING TO STANDARD PLAN 702-50 MAY BE FURNISHED. GROUT AS REQUIRED TO CREATE INVERTS.
3. THE CONTRACTOR SHALL NOT POUR ABOVE BOTTOM OF PAVEMENT SLAB UNTIL PAVING ADJACENT TO INLET HAS BEEN COMPLETED.
4. DIAGONAL REINFORCEMENT FOR PIPE LARGER THAN 36".

NOT TO BE USED WHERE  
SUBJECT TO VEHICULAR  
TRAFFIC



STANDARD PLAN NO. 702-21	DATED January 18, 2008	SHEET NO. 1 OF 1
-----------------------------	---------------------------	---------------------

YARD DRAIN

ENGINEERING DIVISION DEPARTMENT OF PUBLIC WORKS CITY OF BATON ROUGE & PARISH OF EAST BATON ROUGE			
DESIGNED R. ELLIS	DRAWN G. VANNICE	CHECKED R. ELLIS	APPROVED T. STEPHENS

DATE	DESCRIPTION REVISIONS	BY