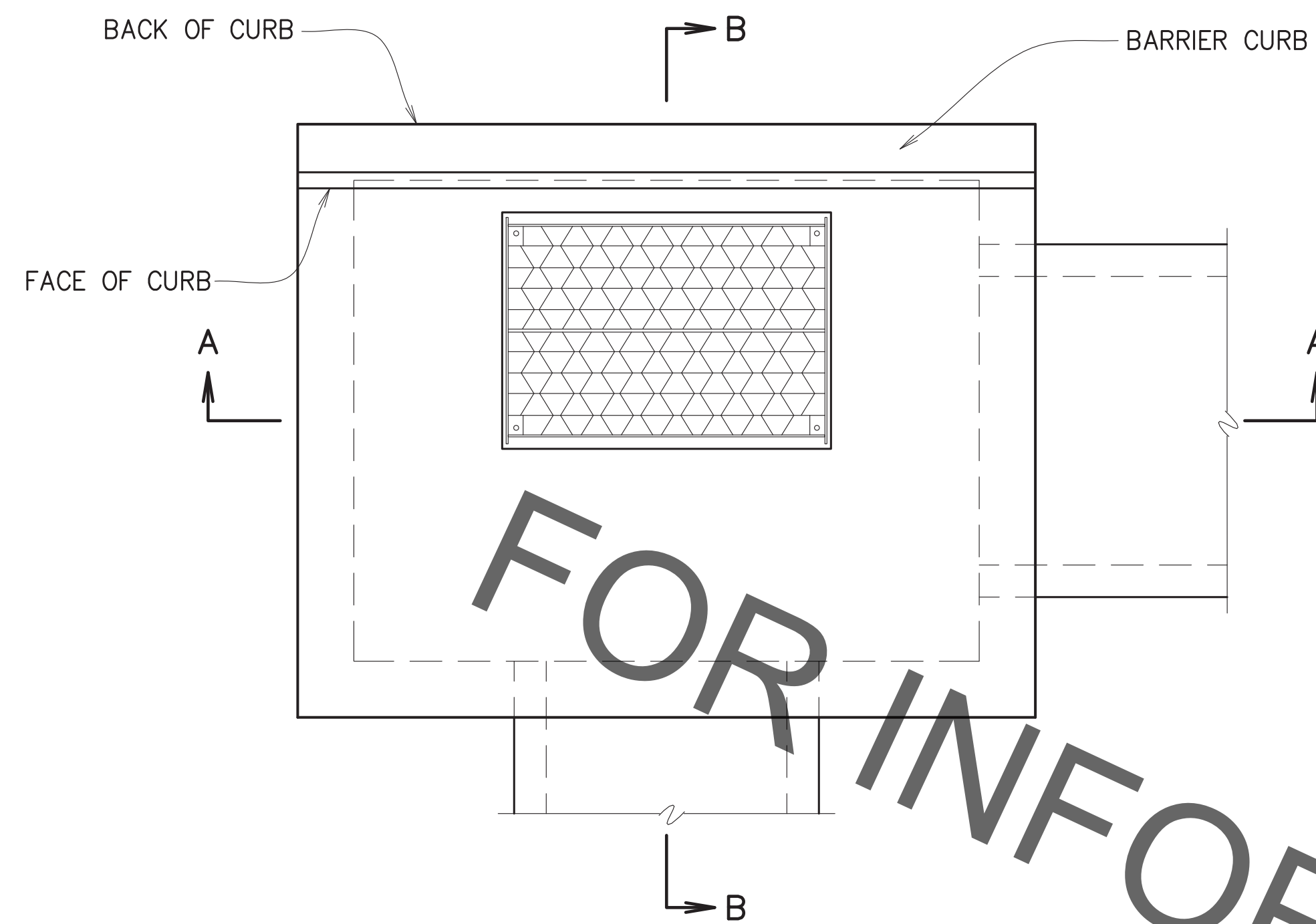
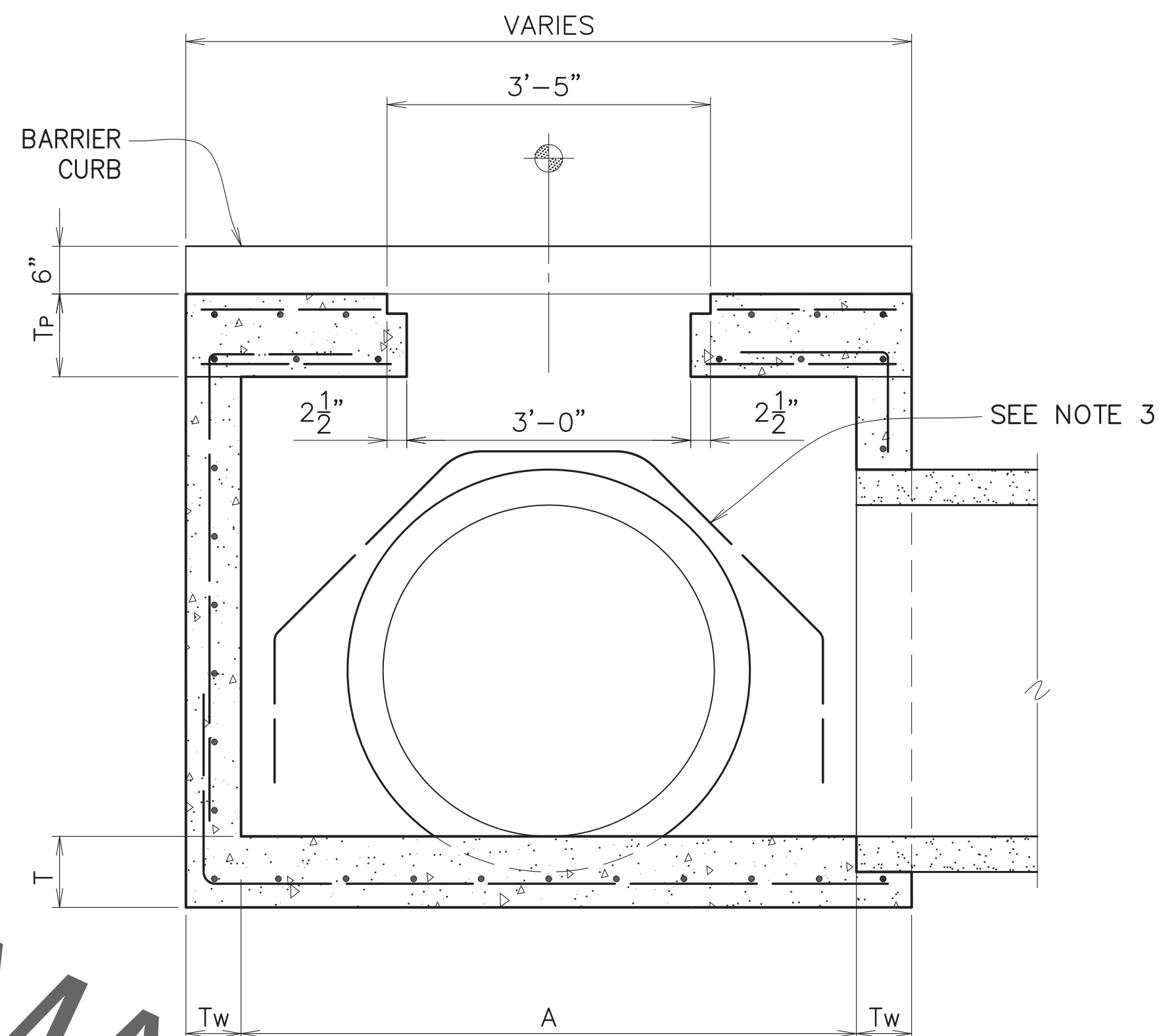


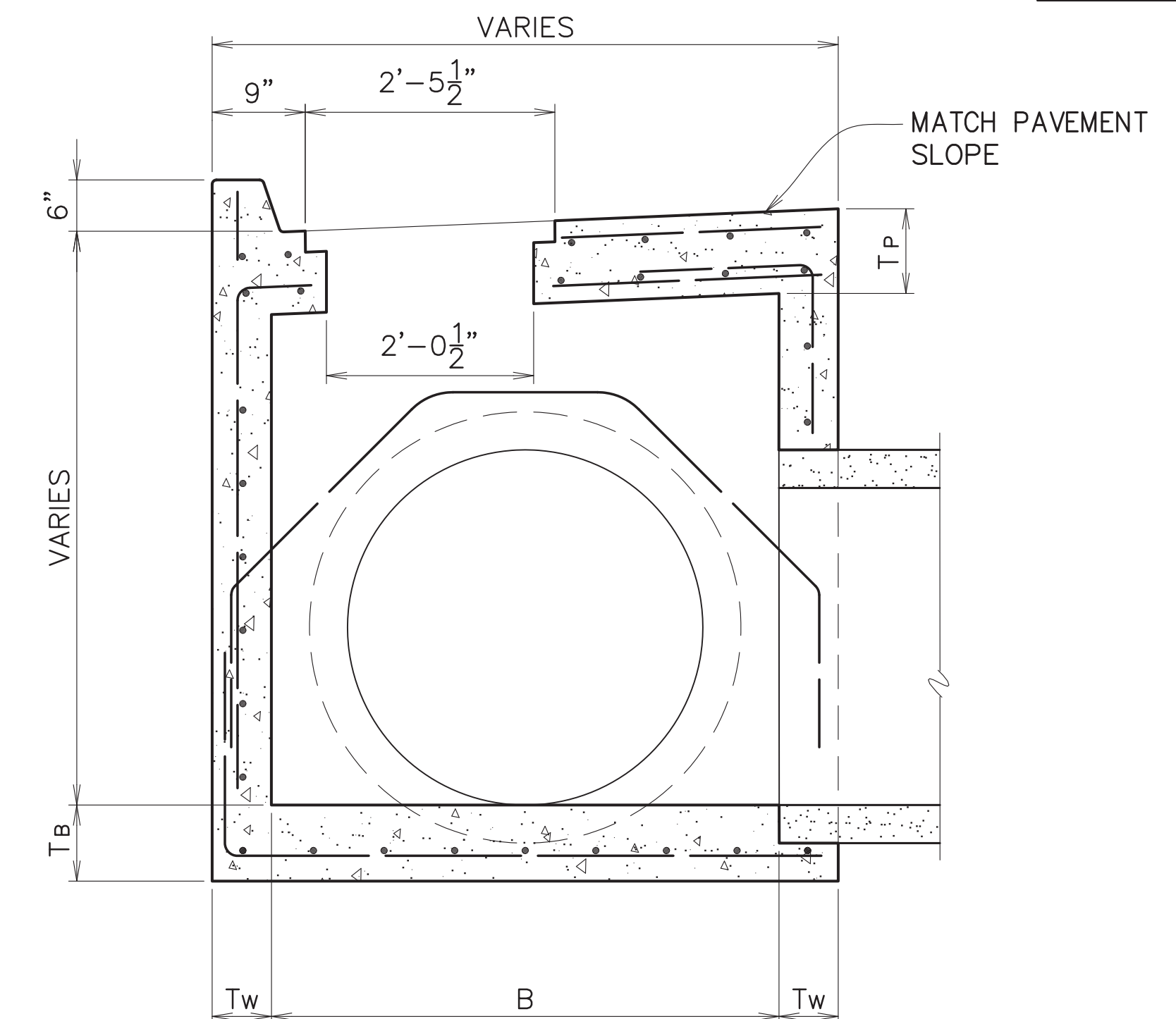
PROJECT NO.	SHEET



TOP VIEW
BARRIER CURB SHOWN
SCALE: 3/4"=1'-0"



SECTION A-A
BARRIER CURB SHOWN
SCALE: 3/4"=1'-0"



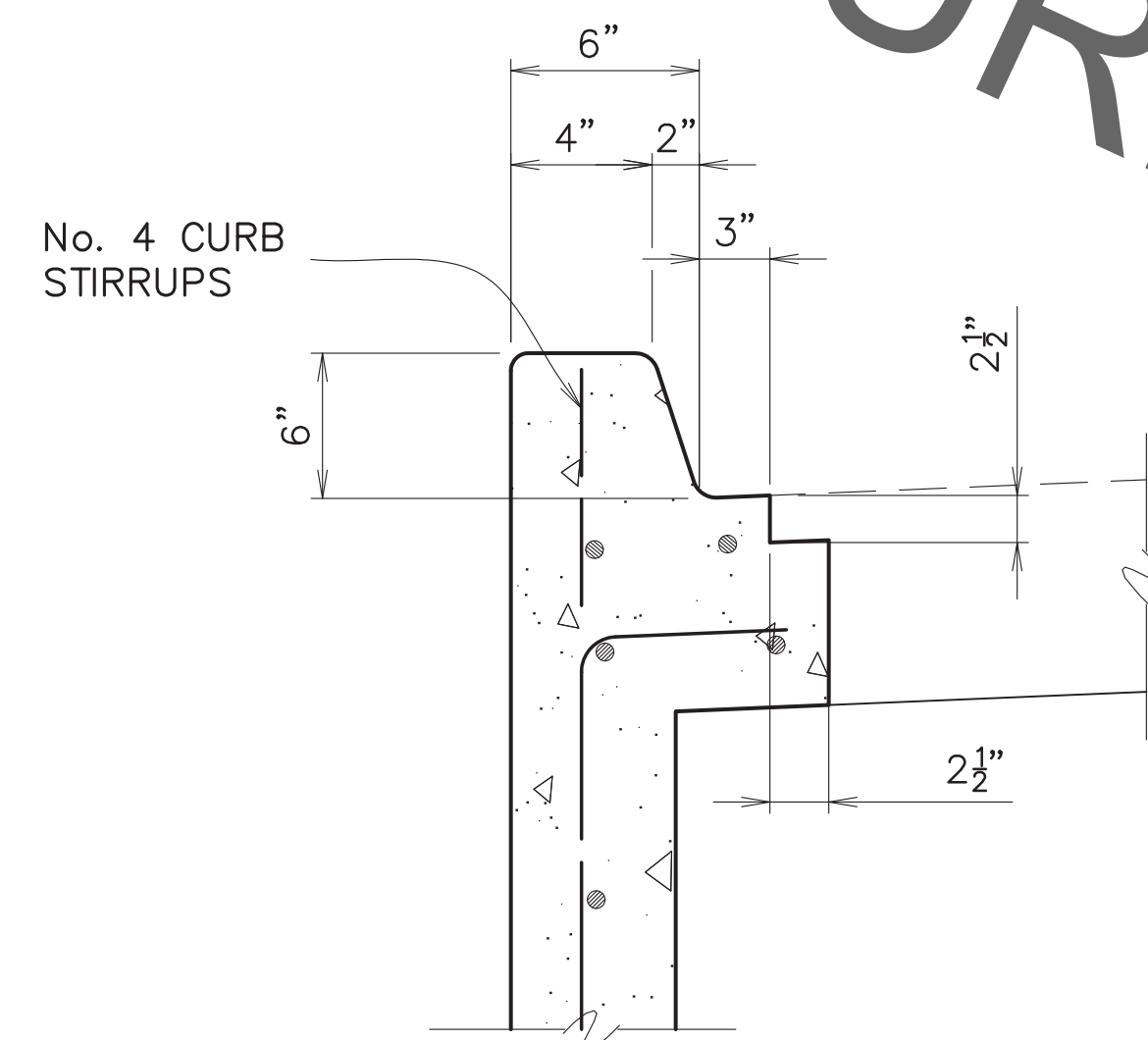
SECTION B-B
BARRIER CURB SHOWN
SCALE: 3/4"=1'-0"

PIPE SIZE		DIMENSION		
ROUND PIPE	ARCH PIPE (ROUND EQUIV.)	A	MOUNTABLE CURB B	BARRIER CURB B
15"	-	3'-0"	2'-11"	2'-5"
18"	15"	3'-0"	2'-11"	2'-5"
24"	18"	3'-0"	2'-11"	2'-10"
30"	24"	3'-4"	3'-5"	3'-5"
36"	30"	4'-0"	4'-0"	4'-0"
42"	36"	4'-8"	4'-8"	4'-8"
48"	-	5'-2"	5'-2"	5'-2"
54"	42"	5'-9"	5'-9"	5'-9"
60"	48"	6'-4"	6'-4"	6'-4"
-	54"	6'-8"	6'-8"	6'-8"
72"	60"	7'-6"	7'-6"	7'-6"
84"	72"	8'-10"	8'-10"	8'-10"

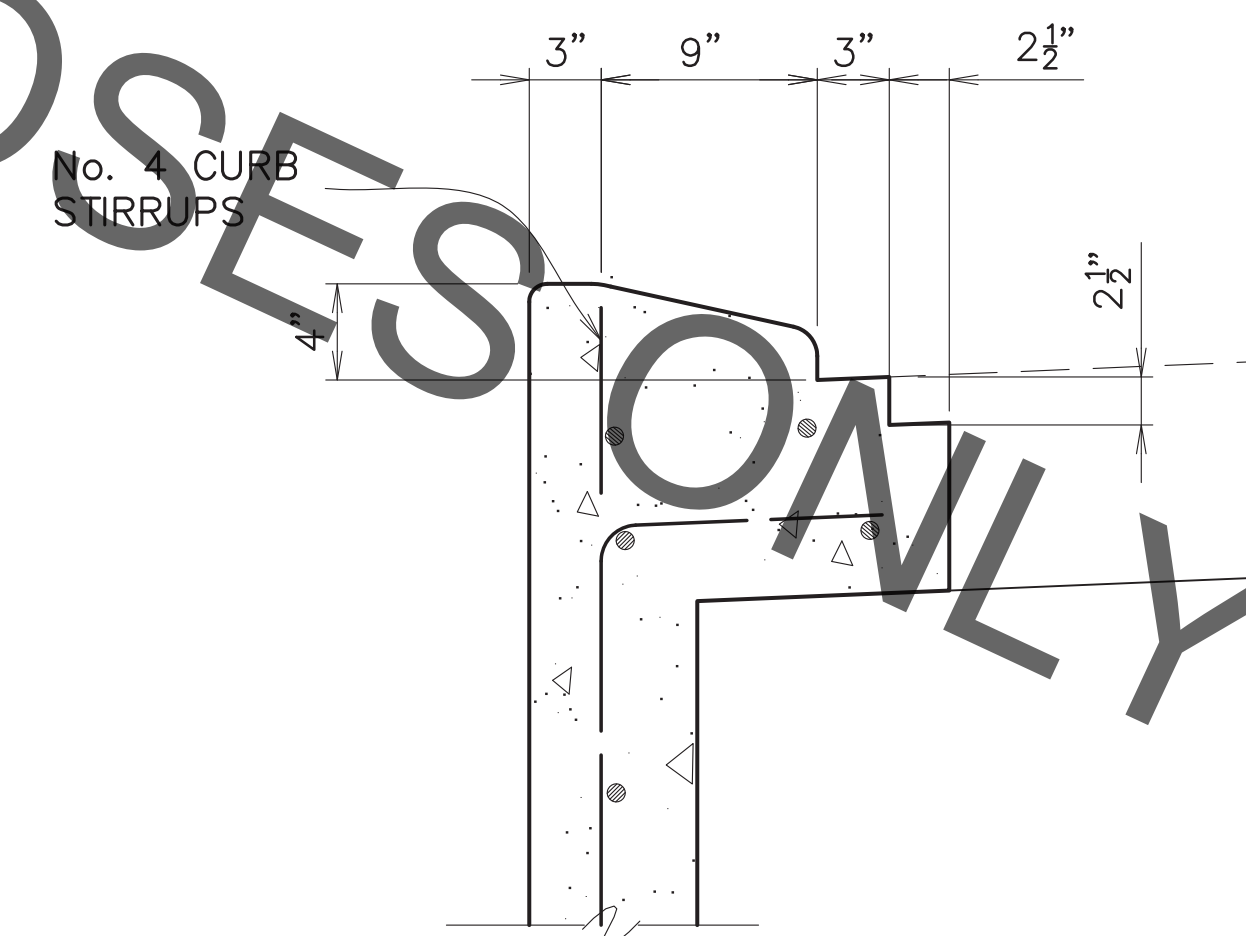
NOTE:

- SEE STANDARD PLAN 702-99 FOR FRAME AND COVER DETAILS. TYPE 2 FRAME AND COVER REQUIRED.
- PRECAST CONCRETE INLETS CONFORMING TO STANDARD PLAN 702-97 MAY BE FURNISHED.
- DIAGONAL REINFORCEMENT REQUIRED FOR PIPE LARGER THAN 36". BARS SHALL LAP TO A FULL LENGTH VERTICAL BAR W/18d LAP LENGTH.
- A & B DIMENSIONS MAY BE VARIED FOR SKEWED PIPE.
- SEE STANDARD PLAN 702-96 FOR THICKNESS, REINFORCING STEEL, AND OTHER STRUCTURAL DETAILS.
- SEE STANDARD PLAN 702-98 FOR CURB TRANSITION DETAILS.

⊙ PLAN STATION CALL-OUT



BARRIER CURB
CURB DETAIL
SCALE: 1-1/2"=1'-0"



MOUNTABLE CURB
CURB DETAIL
SCALE: 1-1/2"=1'-0"



STANDARD PLAN No. 702-10	DATED DEC. 6, 2010	SHT. No. 1 OF 1
-----------------------------	-----------------------	--------------------

**SINGLE RETICULINE
STREET GRATE INLET
(MOUNTABLE & BARRIER CURB)**

ENGINEERING DIVISION DEPARTMENT OF PUBLIC WORKS CITY OF BATON ROUGE & PARISH OF EAST BATON ROUGE			
DESIGNED GLP	DRAWN GLP	CHECKED GLP	APPROVED T. STEPHENS

DATE	DESCRIPTION	BY