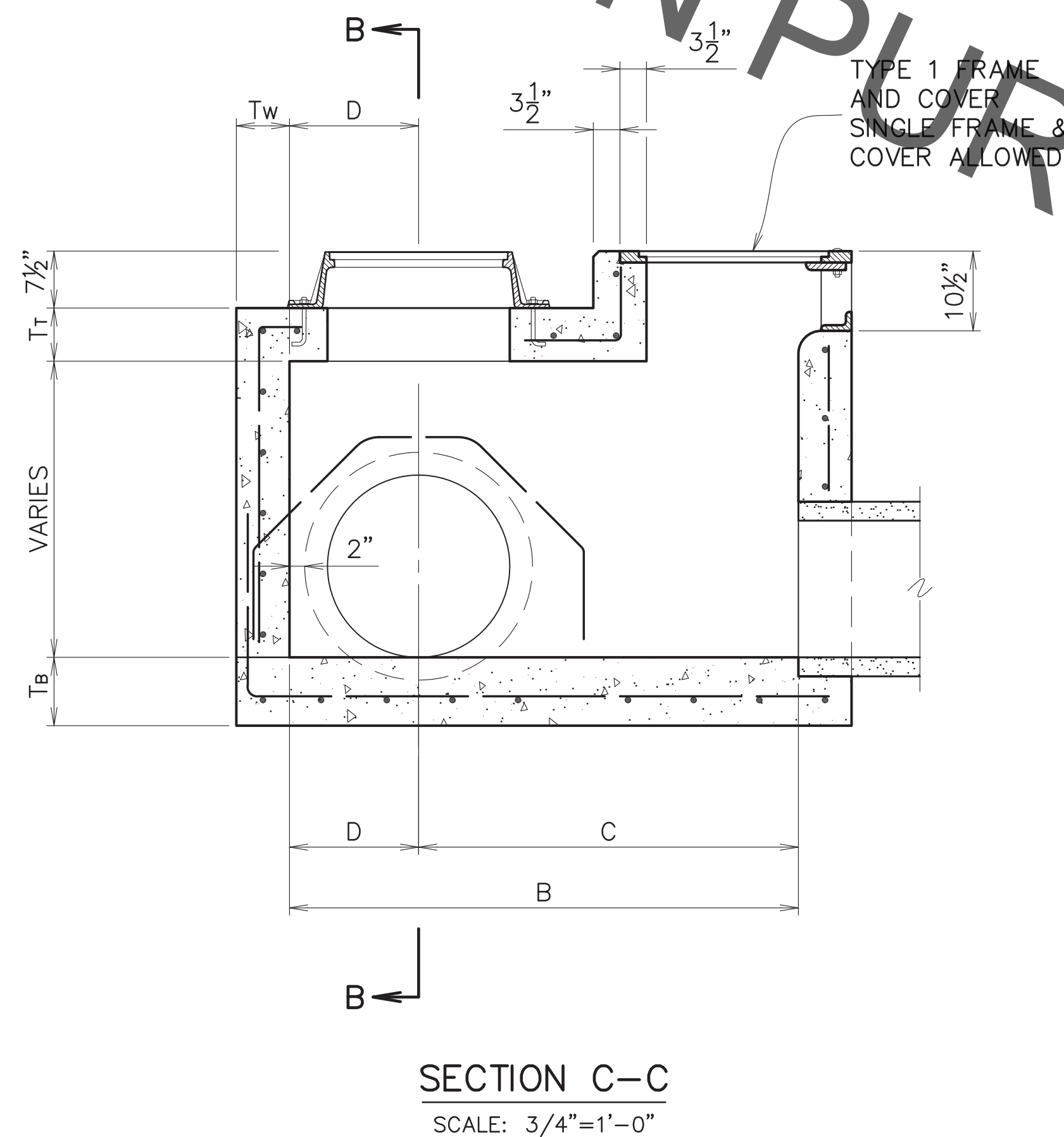
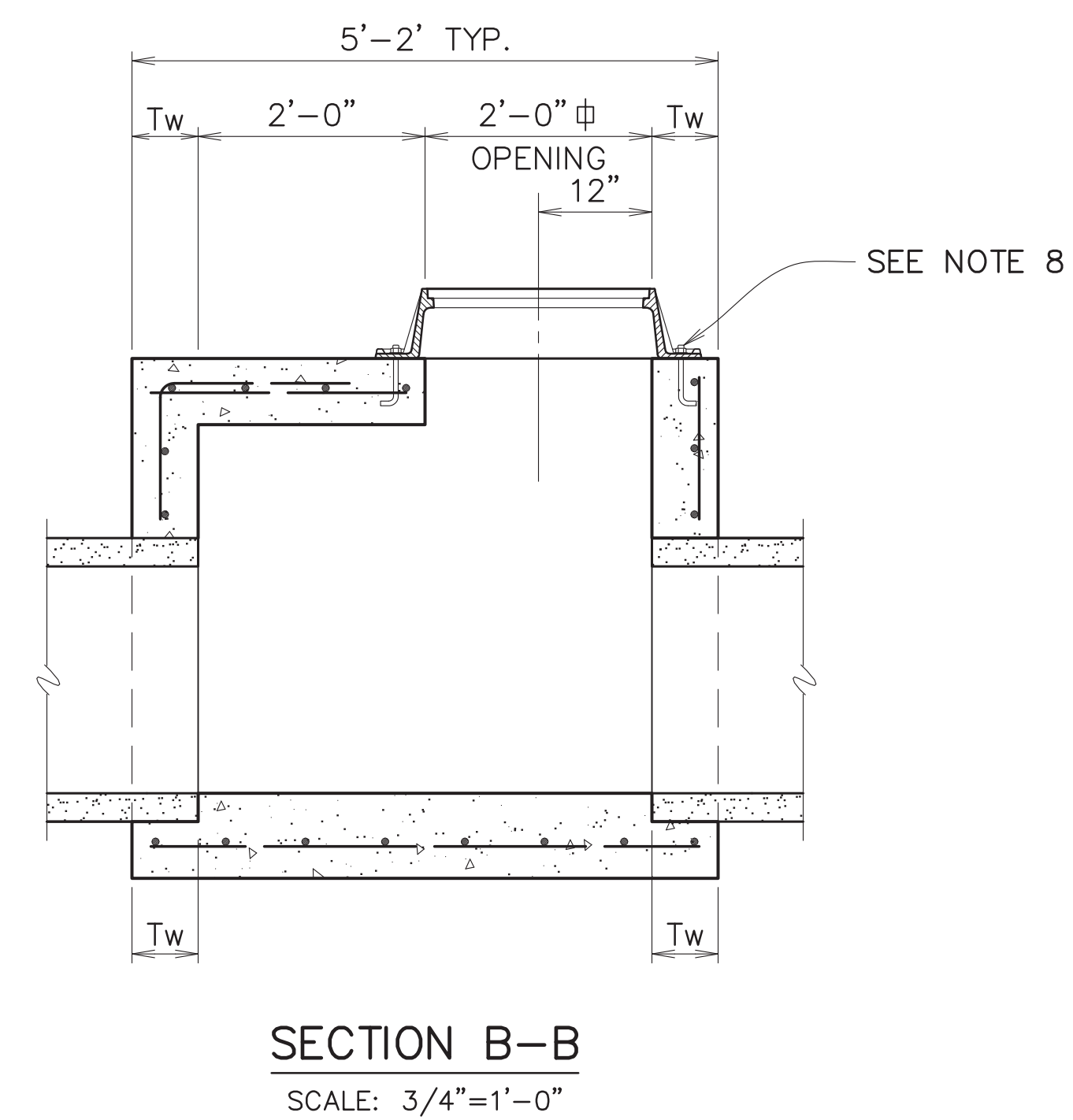
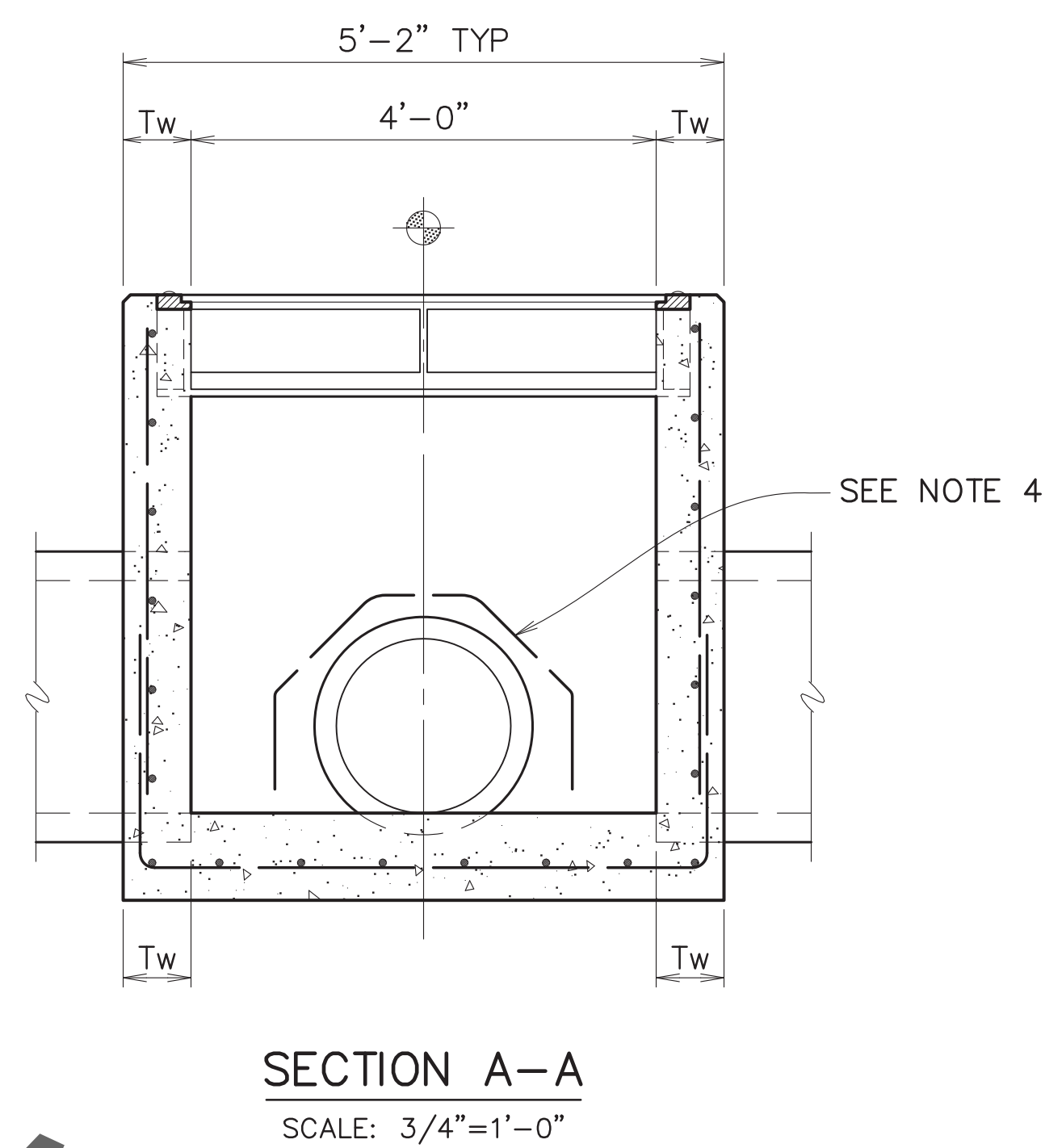
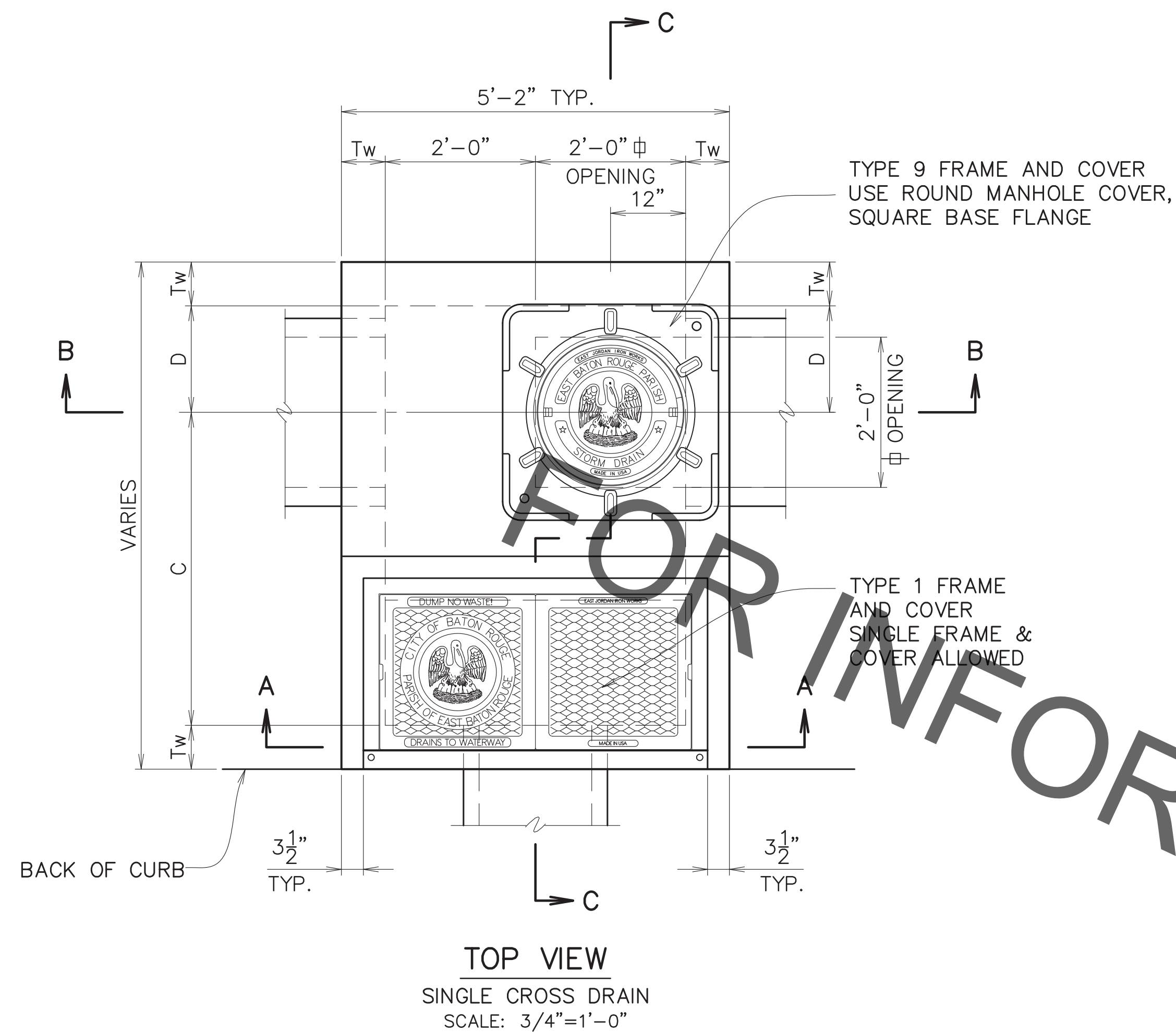


PROJECT NO.	SHEET



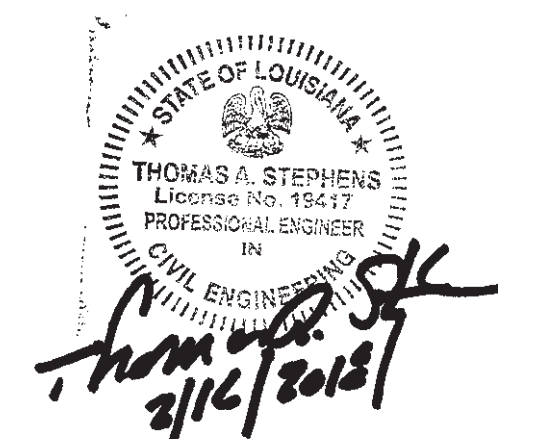
PIPE SIZE		DIMENSION			
ROUND PIPE	ARCH PIPE (ROUND EQUIV.)	FRONT INSIDE WIDTH	B	C	D
15"	-	4'-0"	4'-8"	3'-8"	1'-0"
18"	15"	4'-0"	4'-10"	3'-8"	1'-2"
24"	18"	4'-0"	5'-4"	3'-11"	1'-5"
30"	24"	4'-0"	6'-0"	4'-3"	1'-9"
36"	30"	4'-0"	6'-8"	4'-8"	2'-0"
42"	36"	4'-0"	7'-3"	4'-11"	2'-4"
48"	-	4'-0"	7'-9"	5'-2"	2'-7"

NOTE:

- SEE STANDARD PLAN 702-99 FOR FRAME AND COVER DETAILS. TYPE 1 (SINGLE FRAME AND COVER ALLOWED) AND TYPE 9 FRAME AND COVER.
- PRECAST CONCRETE INLETS CONFORMING TO STANDARD PLAN 702-97 MAY BE FURNISHED.
- CONCRETE SHALL NOT BE PLACED ABOVE BOTTOM OF PAVEMENT UNTIL PAVING ADJACENT TO INLET HAS BEEN COMPLETED.
- DIAGONAL REINFORCEMENT REQUIRED FOR PIPE LARGER THAN 36". BARS SHALL LAP TO A FULL LENGTH VERTICAL BAR W/18d LAP LENGTH.
- A & B DIMENSIONS MAY BE VARIED FOR SKEWED PIPE.
- SEE STANDARD PLAN 702-96 FOR THICKNESS, REINFORCING STEEL, AND OTHER STRUCTURAL DETAILS.
- SEE STANDARD PLAN 702-98 FOR CURB TRANSITION DETAILS.
- TWO (2) GALV. STEEL CONCRETE ANCHOR BOLTS REQ'D FOR FRAME. MINIMUM BOLT SIZE IS 3/4x10x2x4.

PLAN STATION CALL-OUT

FOR INFORMATION PURPOSES ONLY



STANDARD PLAN No. 702-05	DATED DEC. 6, 2010	SHT. No. 1 OF 1
-----------------------------	-----------------------	--------------------

**SINGLE CURB INLET
(PIPE BEHIND CURB)
FOR SUBDIVISION**

ENGINEERING DIVISION DEPARTMENT OF PUBLIC WORKS CITY OF BATON ROUGE & PARISH OF EAST BATON ROUGE			
DESIGNED GLP	DRAWN GLP	CHECKED GLP	APPROVED T.STEPHENS

DATE	DESCRIPTION	BY
	REVISION	