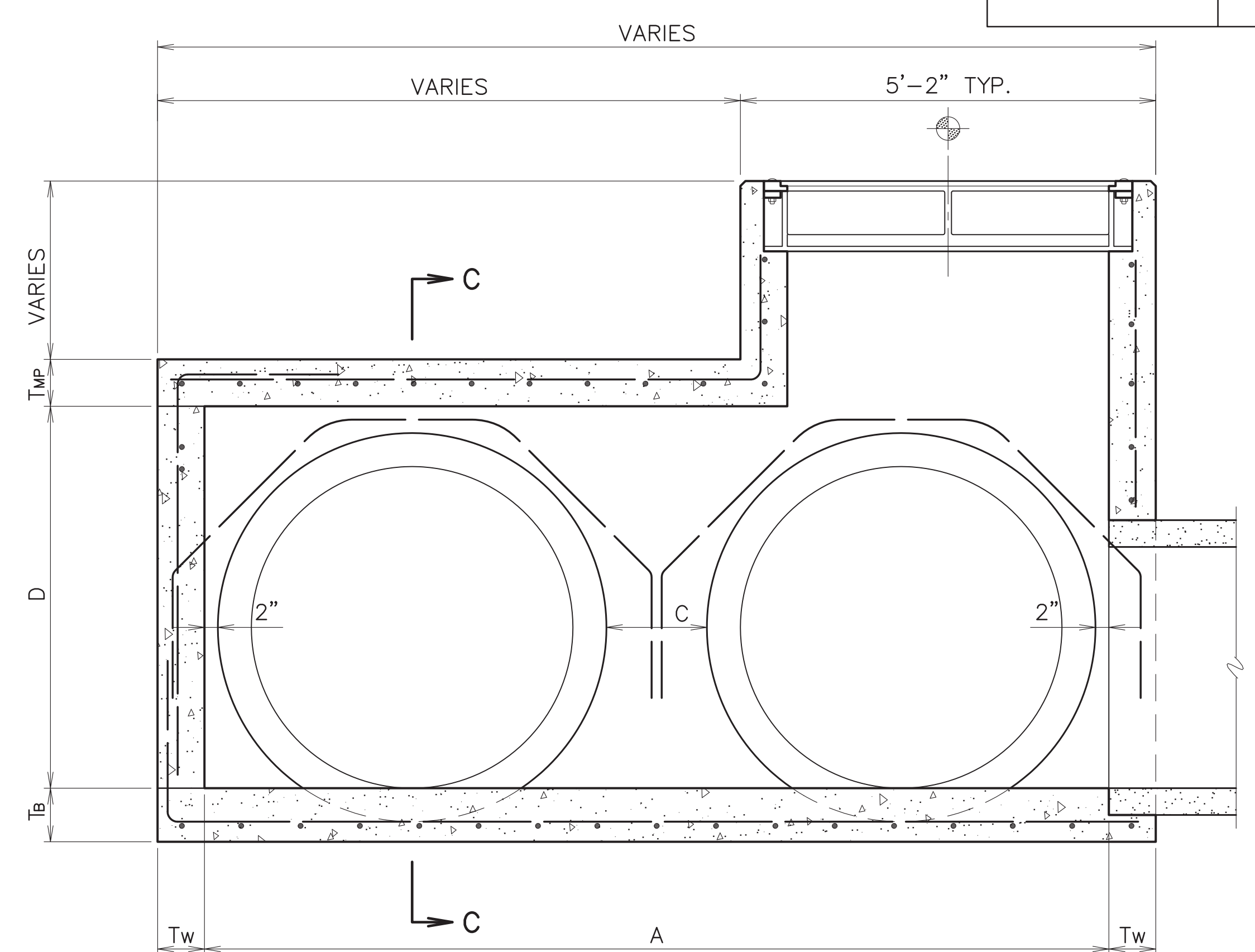
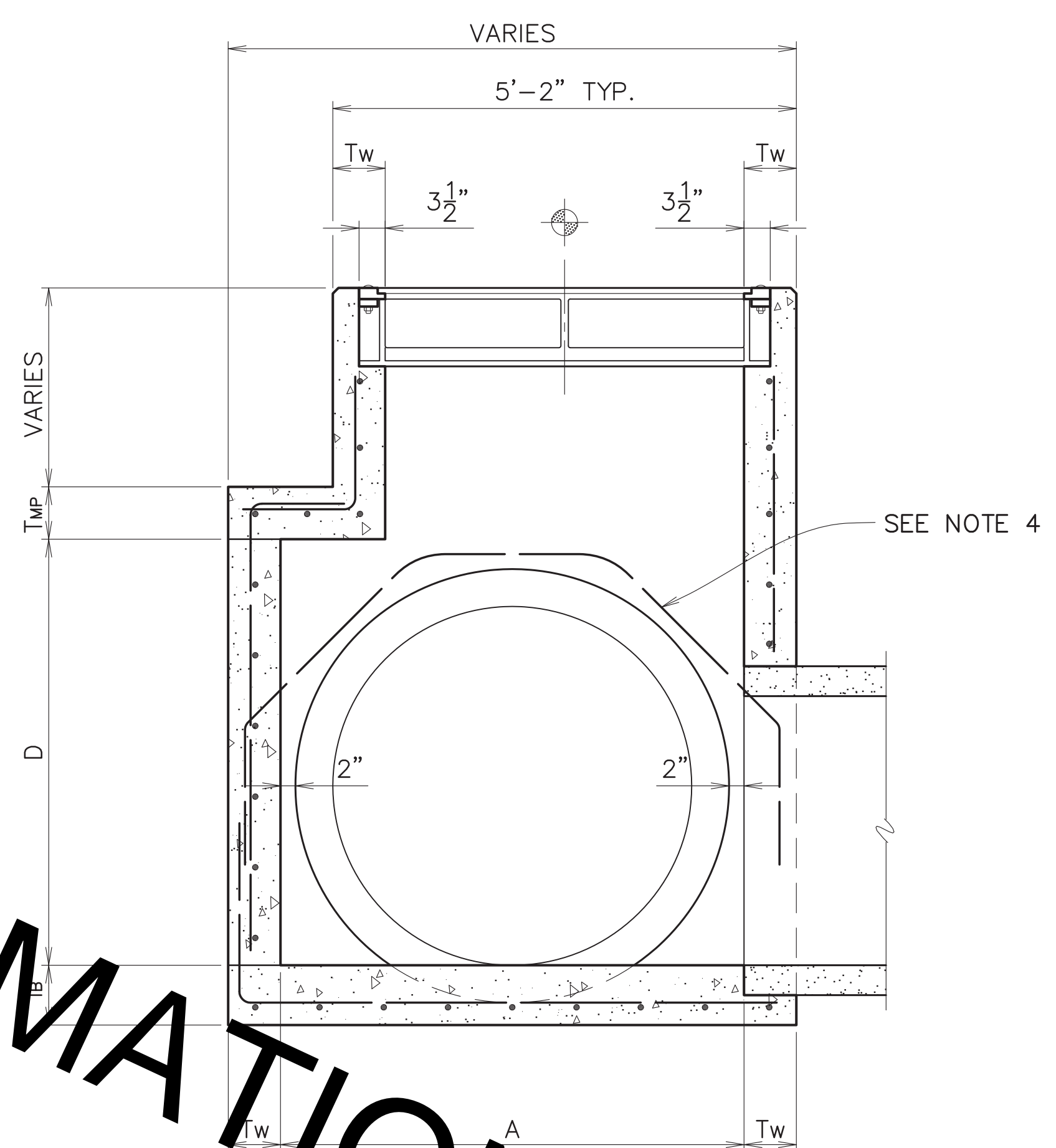
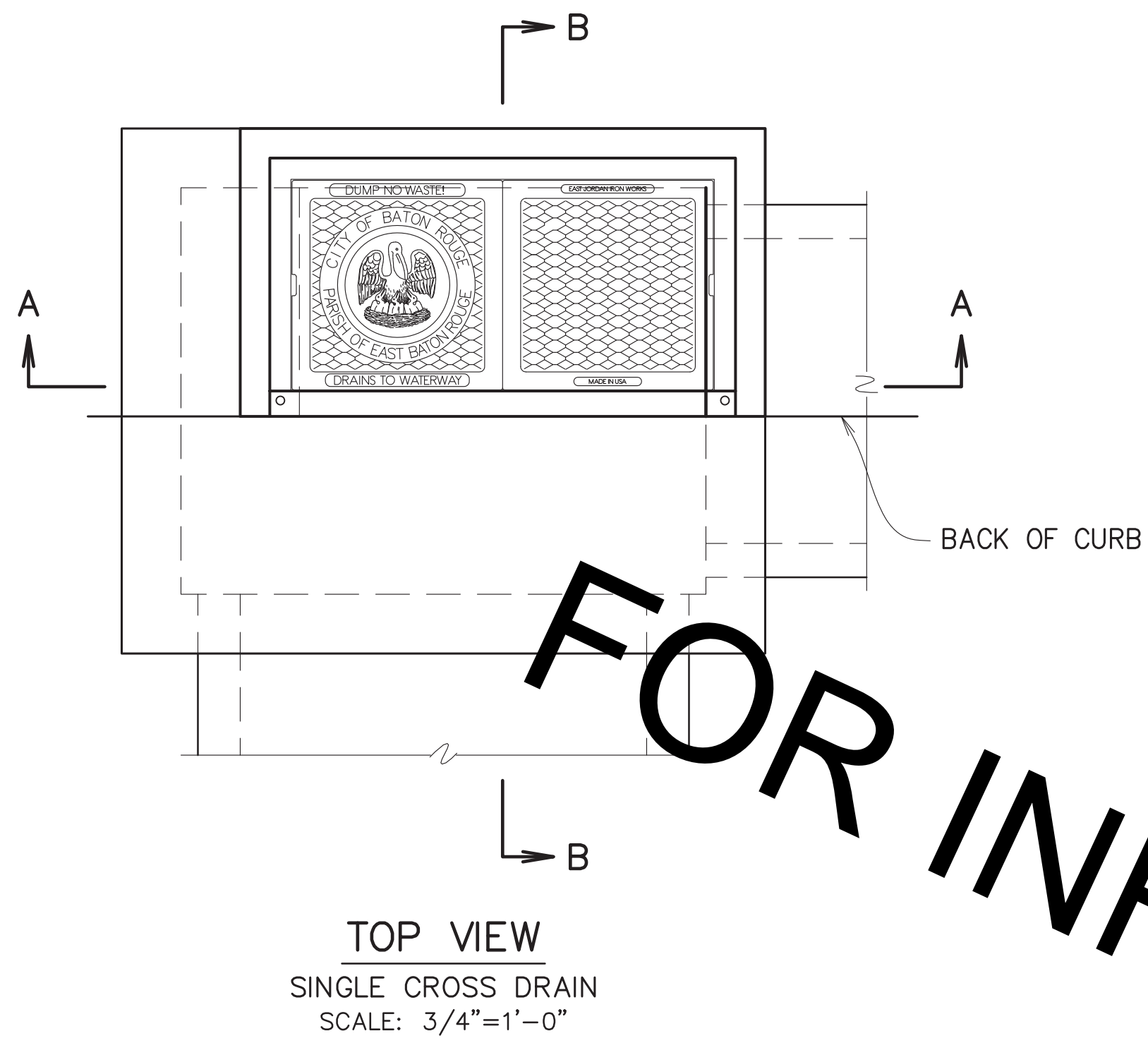


PROJECT NO.	SHEET

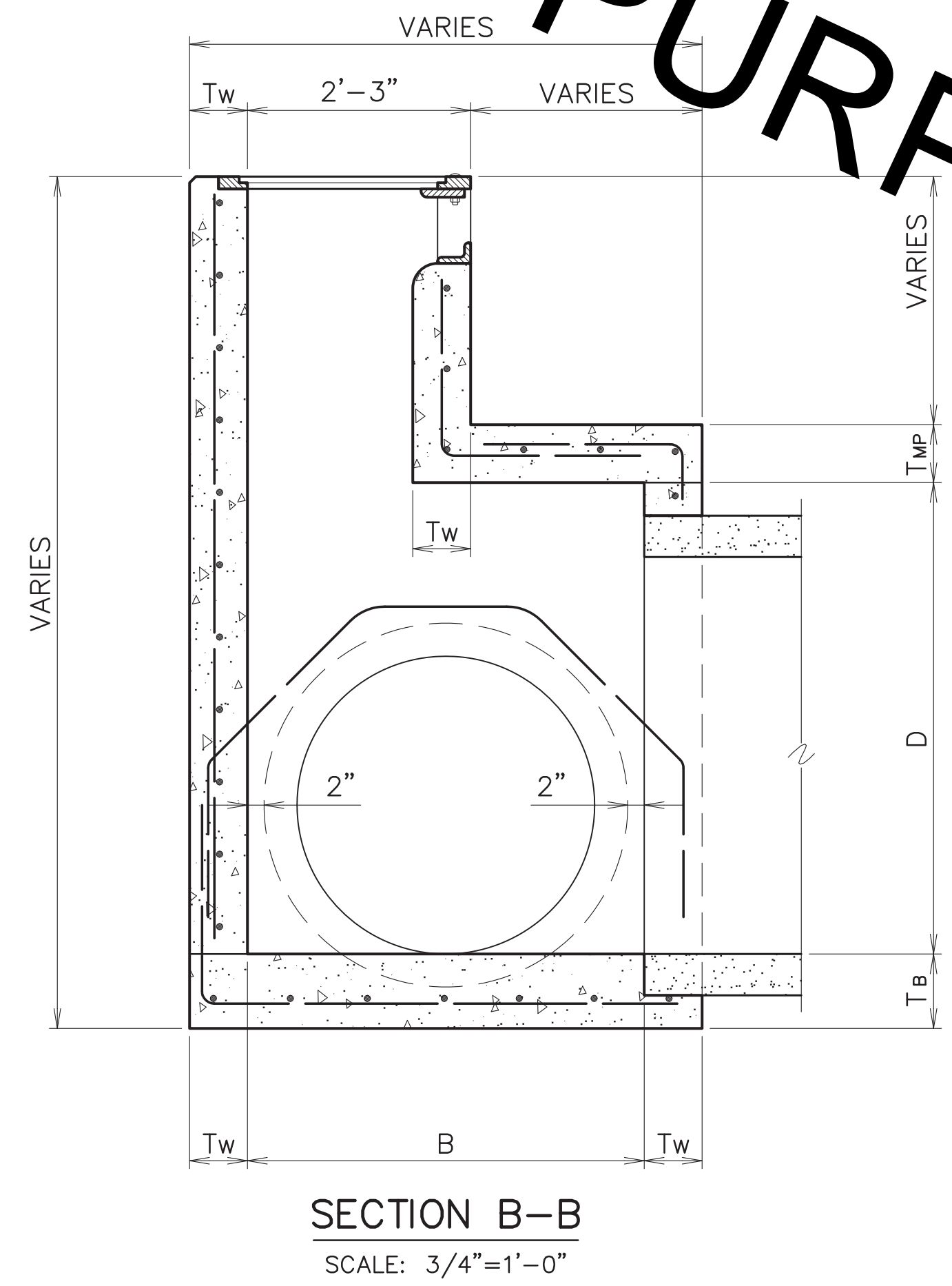


FOR INFORMATION PURPOSES ONLY

PIPE SIZE		DIMENSION					
ROUND PIPE	ARCH PIPE (ROUND EQUIV.)	A SINGLE PIPE	A DOUBLE PIPE	B	C	D ROUND PIPE	D ARCH PIPE
15"	-	4'-0"	5'-0"	2'-3"	15"	2'-0"	2'-0"
18"	15"	4'-0"	5'-7"	2'-3"	15"	2'-0"	2'-0"
24"	18"	4'-0"	6'-7"	2'-10"	15"	2'-7"	2'-0"
30"	24"	4'-0"	8'-9"	3'-5"	15"	3'-2"	2'-2"
36"	30"	4'-0"	8'-11"	4'-0"	15"	3'-8"	2'-6"
42"	36"	4'-8"	10'-5"	4'-8"	17"	4'-3"	2'-11"
48"	-	5'-2"	11'-7"	5'-2"	19"	4'-9"	-
54"	42"	5'-9"	12'-11"	5'-9"	21"	5'-4"	3'-4"
60"	48"	6'-4"	14'-3"	6'-4"	23"	5'-10"	3'-9"
-	54"	6'-8"	15'-0"	6'-8"	24"	-	4'-2"
72"	60"	7'-6"	16'-8"	7'-6"	24"	6'-11"	4'-7"
84"	72"	8'-10"	20'-0"	8'-10"	36"	8'-0"	5'-5"

■ CENTERED CASTING

- NOTE:
- SEE STANDARD PLAN 702-99 FOR FRAME AND COVER DETAILS. TYPE 1 FRAME AND COVER REQUIRED. SINGLE FRAME AND COVER ALLOWED.
  - PRECAST CONCRETE INLETS CONFORMING TO STANDARD PLAN 702-97 MAY BE FURNISHED.
  - CONCRETE SHALL NOT BE PLACED ABOVE BOTTOM OF PAVEMENT UNTIL PAVING ADJACENT TO INLET HAS BEEN COMPLETED.
  - DIAGONAL REINFORCEMENT REQUIRED FOR PIPE LARGER THAN 36". BARS SHALL LAP TO A FULL LENGTH VERTICAL BAR W/18d LAP LENGTH.
  - A & B DIMENSIONS MAY BE VARIED FOR SKEWED PIPE.
  - SEE STANDARD PLAN 702-96 FOR THICKNESS, REINFORCING STEEL, AND OTHER STRUCTURAL DETAILS.
  - SEE STANDARD PLAN 702-98 FOR CURB TRANSITION DETAILS.
- ⊙ PLAN STATION CALL-OUT



THOMAS A. STEPHENS  
 License No. 196417  
 PROFESSIONAL ENGINEER  
 IN  
 CIVIL ENGINEERING  
*Thomas A. Stephens*  
 2/16/2018

STANDARD PLAN No. 702-03	DATED DEC. 6, 2010	SHT. No. 1 OF 1
-----------------------------	-----------------------	--------------------

<b>SINGLE CURB INLET</b> (PIPE UNDER CURB)			
ENGINEERING DIVISION DEPARTMENT OF PUBLIC WORKS CITY OF BATON ROUGE & PARISH OF EAST BATON ROUGE			
DESIGNED GLP	DRAWN GLP	CHECKED GLP	APPROVED T. STEPHENS

DATE	DESCRIPTION	BY
	REVISION	