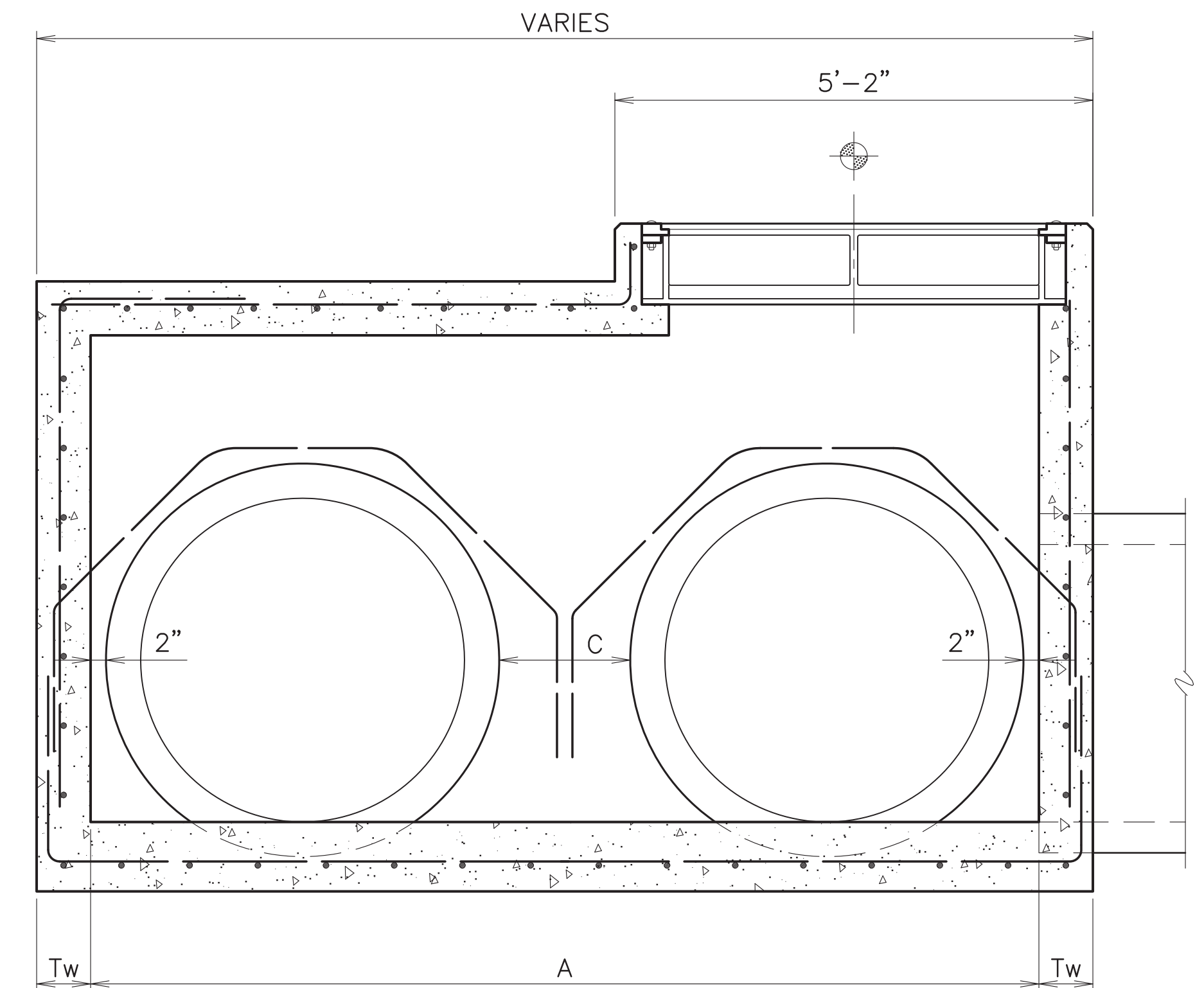
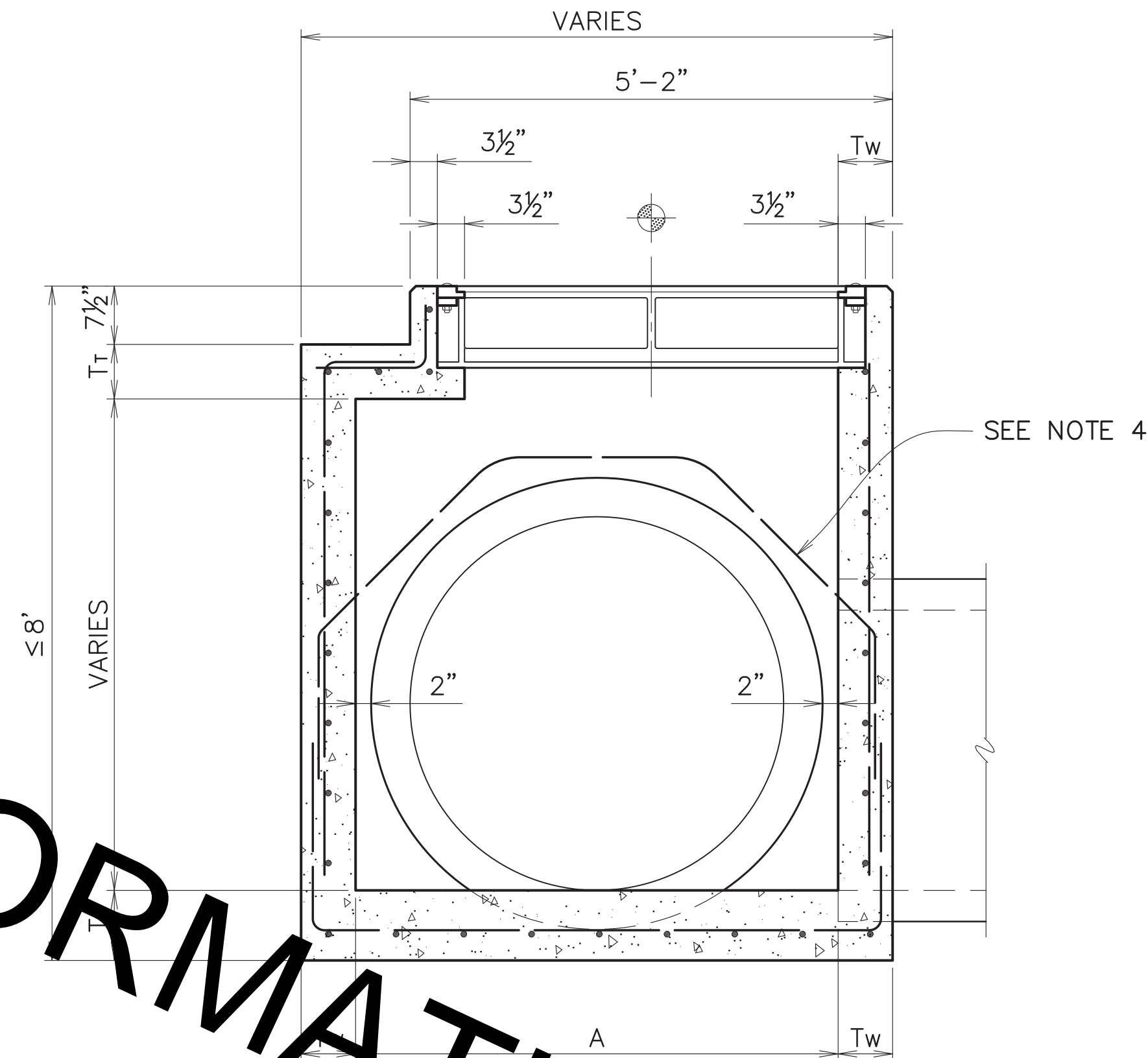
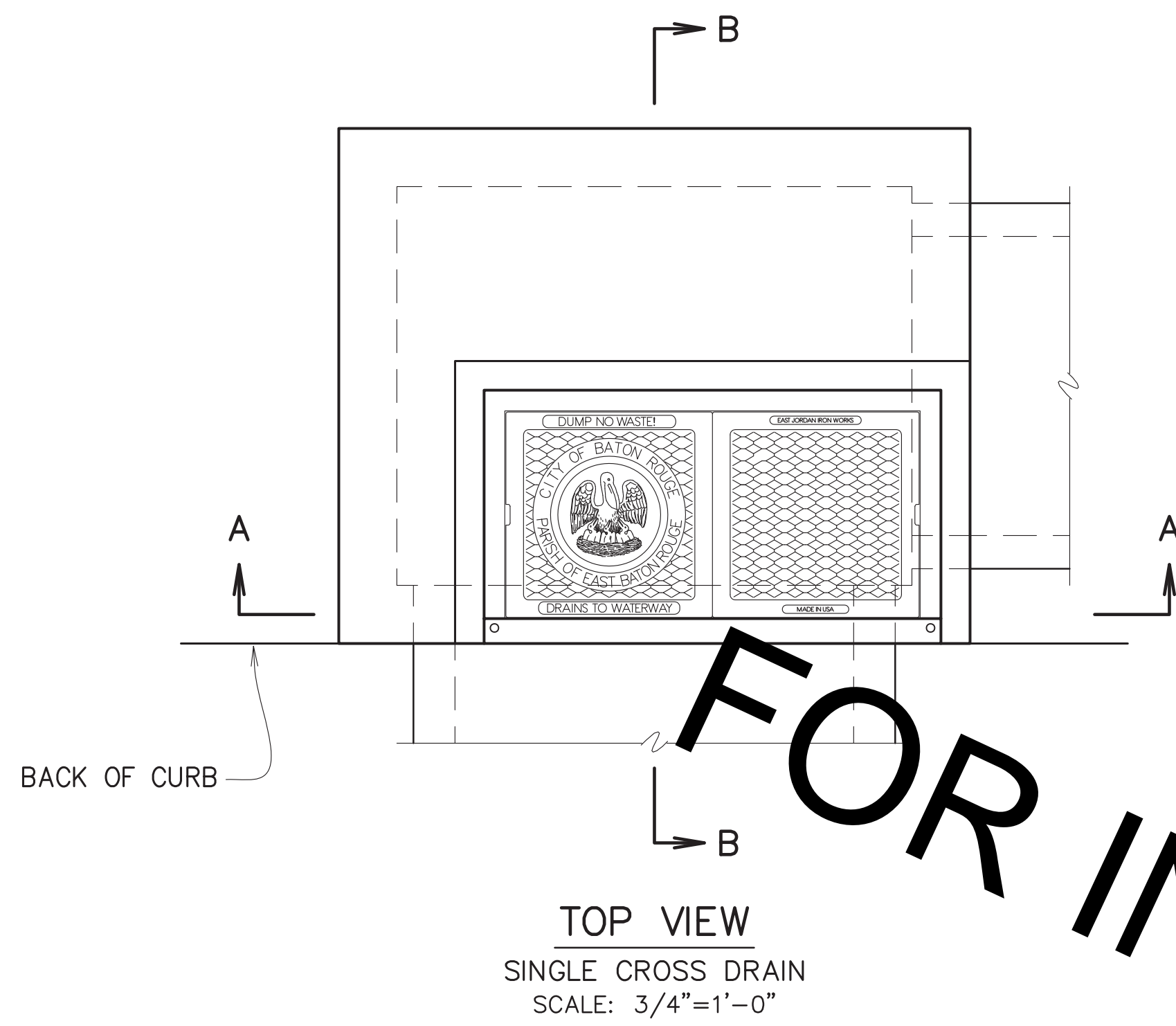


PROJECT NO.	SHEET



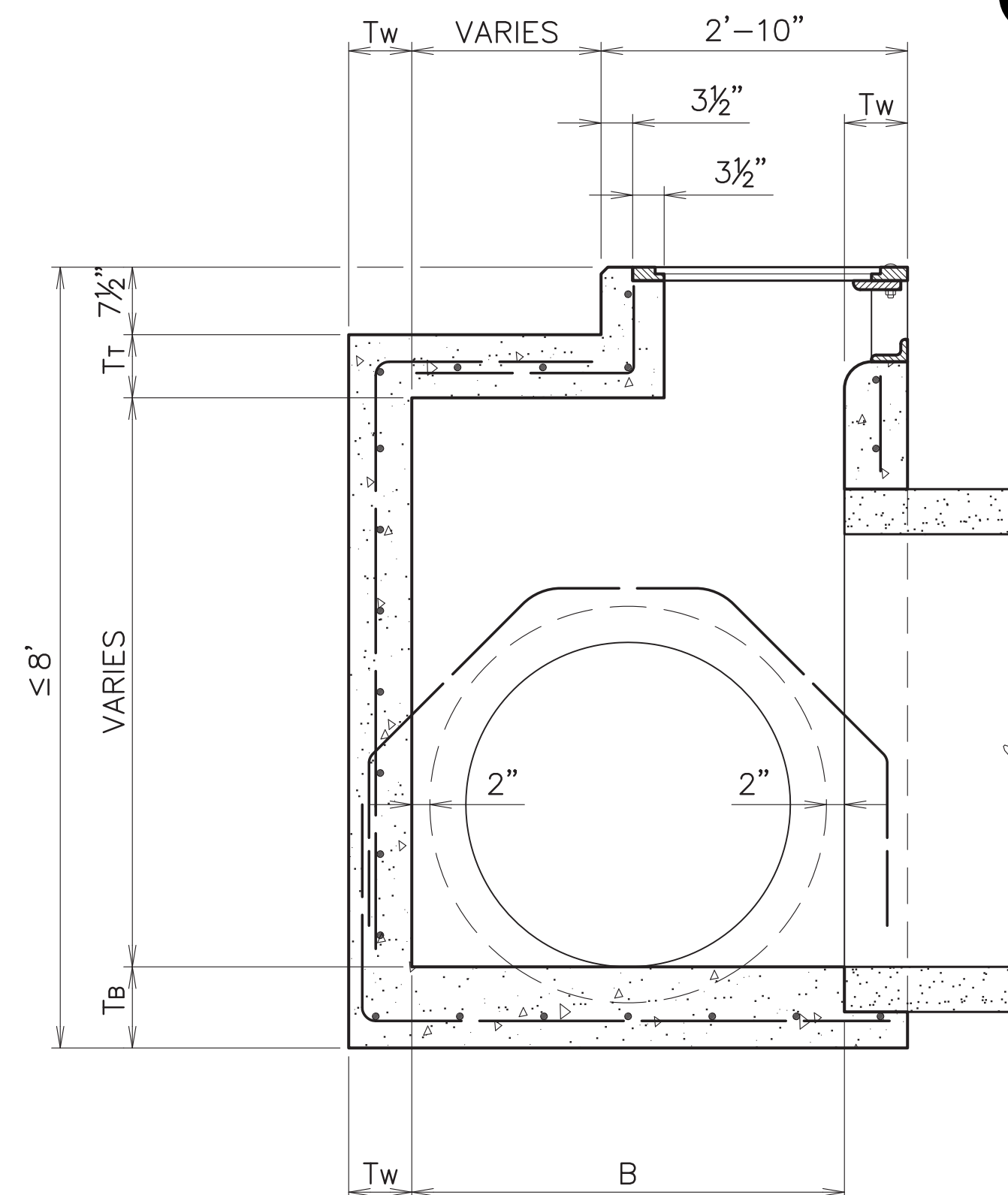
PIPE SIZE		DIMENSION			
ROUND PIPE	ARCH PIPE (ROUND EQUIV.)	A SINGLE PIPE	A DOUBLE PIPE	B	C
15"	-	4'-0"	5'-0"	2'-3"	15"
18"	15"	4'-0"	5'-7"	2'-3"	15"
24"	18"	4'-0"	6'-7"	2'-10"	15"
30"	24"	4'-0"	8'-9"	3'-5"	15"
36"	30"	4'-0"	8'-11"	4'-0"	15"
42"	36"	4'-8"	10'-5"	4'-8"	17"
48"	-	5'-2"	11'-7"	5'-2"	19"
54"	42"	5'-9"	12'-11"	5'-9"	21"
60"	48"	6'-4"	14'-3"	6'-4"	23"
-	54"	6'-8"	15'-0"	6'-8"	24"
72"	60"	7'-6"	16'-8"	7'-6"	24"
84"	72"	8'-10"	20'-0"	8'-10"	36"

Centered Casting

NOTE:

- SEE STANDARD PLAN 702-99 FOR FRAME AND COVER DETAILS. TYPE 1 FRAME AND COVER REQUIRED. SINGLE FRAME AND COVER ALLOWED.
- PRECAST CONCRETE INLETS CONFORMING TO STANDARD PLAN 702-97 MAY BE FURNISHED.
- CONCRETE SHALL NOT BE PLACED ABOVE BOTTOM OF PAVEMENT UNTIL PAVING ADJACENT TO INLET HAS BEEN COMPLETED.
- DIAGONAL REINFORCEMENT REQUIRED FOR PIPE LARGER THAN 36". BARS SHALL LAP TO A FULL LENGTH VERTICAL BAR W/18d LAP LENGTH.
- A & B DIMENSIONS MAY BE VARIED FOR SKEWED PIPE.
- SEE STANDARD PLAN 702-96 FOR THICKNESS, REINFORCING STEEL, AND OTHER STRUCTURAL DETAILS.
- SEE STANDARD PLAN 702-98 FOR CURB TRANSITION DETAILS.

PLAN STATION CALL-OUT



SECTION B-B
SCALE: 3/4"=1'-0"

FOR INFORMATION PURPOSES ONLY

Thomas Stephens
 2/16/2018

STANDARD PLAN No. 702-01	DATED DEC. 6, 2010	SHT. No. 1 OF 2
-----------------------------	-----------------------	--------------------

SINGLE CURB INLET
(PIPE BEHIND CURB)
(DEPTHS ≤ 8')

ENGINEERING DIVISION DEPARTMENT OF PUBLIC WORKS CITY OF BATON ROUGE & PARISH OF EAST BATON ROUGE			
DESIGNED GLP	DRAWN GLP	CHECKED GLP	APPROVED T. STEPHENS

DATE	DESCRIPTION	BY
	REVISION	