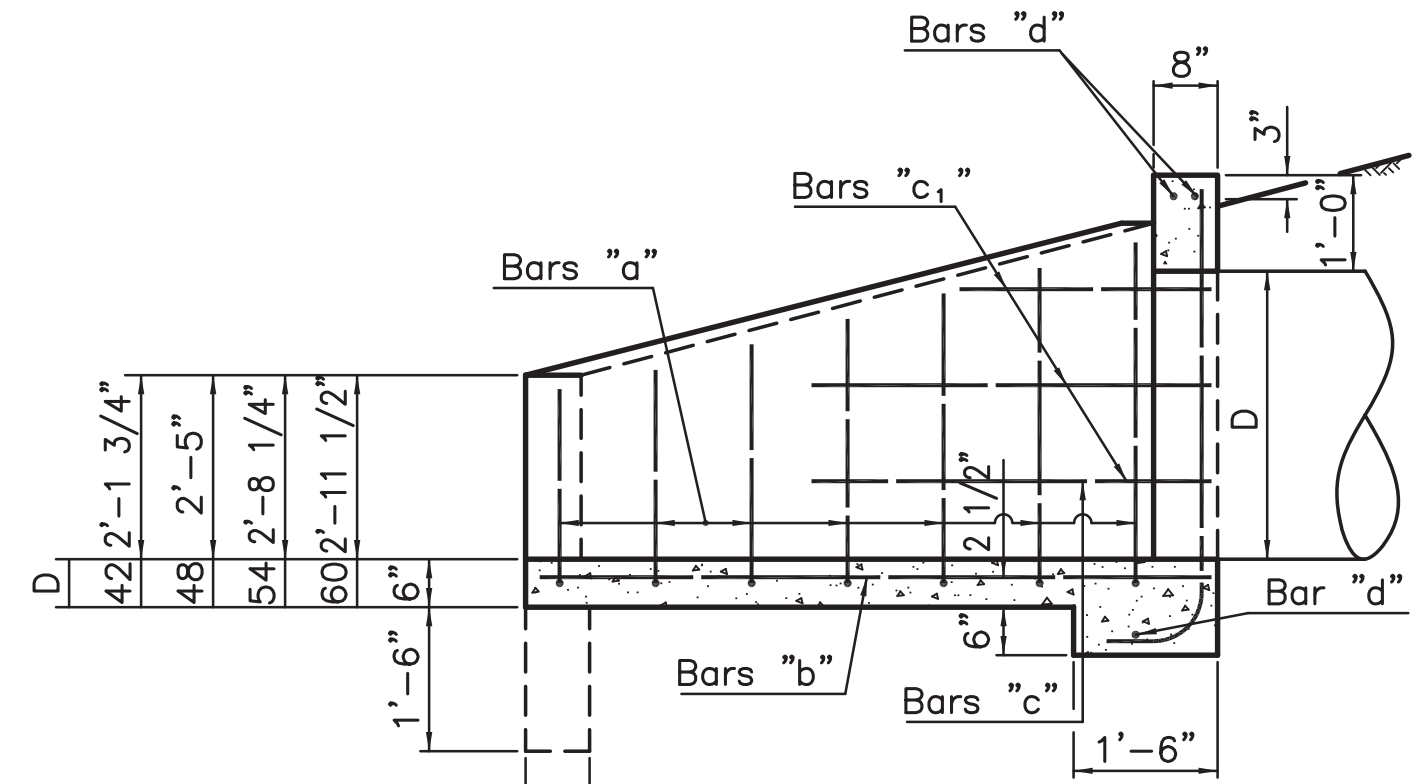


D	Length
42	5'-0 1/2"
48	5'-5 1/2"
54	6'-0 1/2"
60	6'-6 1/2"



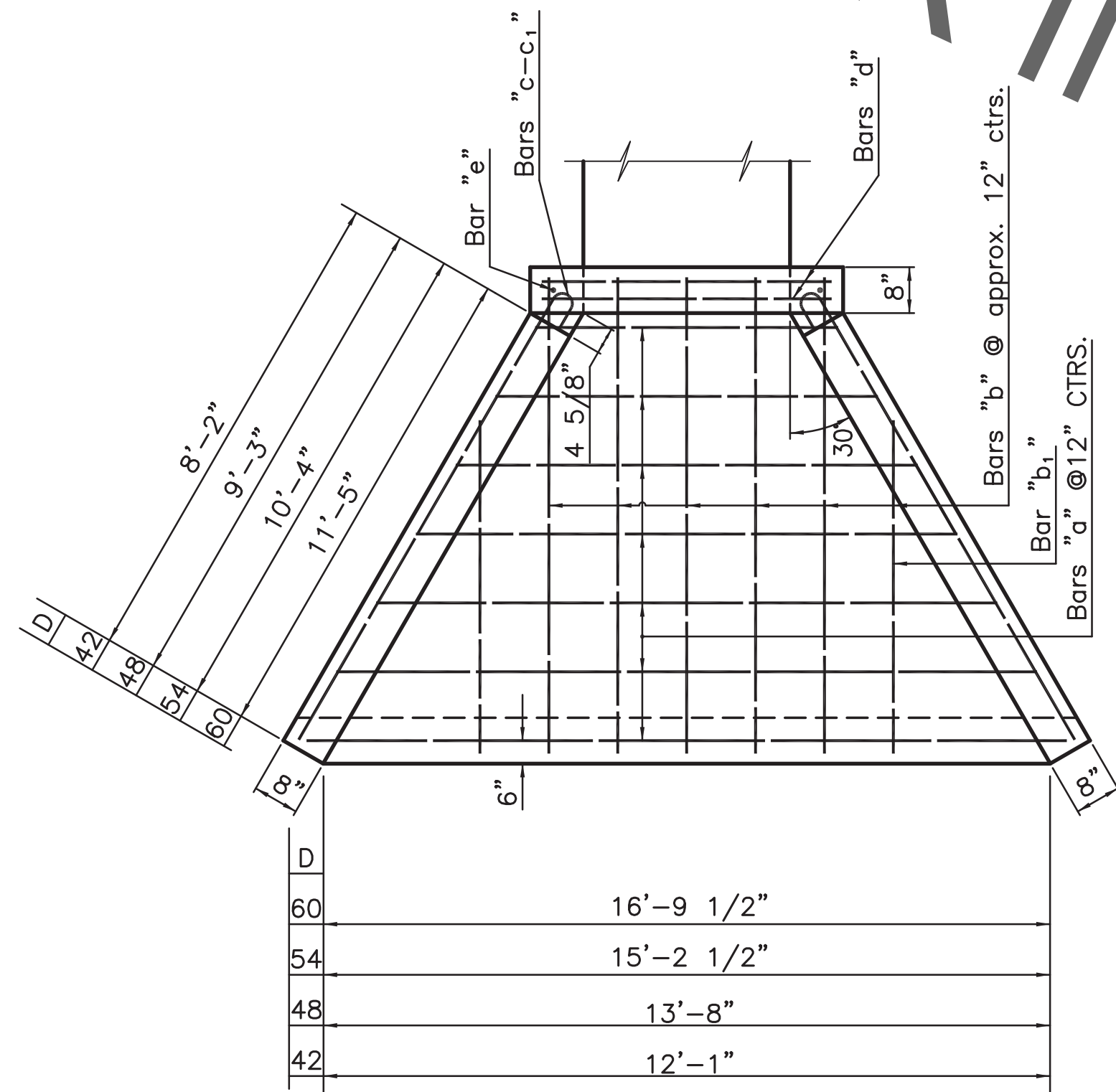
D	Length
42	7'-5"
48	8'-4 1/4"
54	9'-3 1/2"
60	10'-2 3/4"

Length
2'-11"
3'-2"
3'-5"
3'-8"
3'-11"
4'-2"
4'-5"
4'-8"
4'-11"
5'-2"

Detail of 1/2"Ø bars "a" for 54" pipe headwall

Length
2'-8"
2'-11"
3'-2"
3'-5"
3'-8"
3'-11"
4'-2"
4'-5"
4'-8"
4'-11"
5'-2"

Detail of 1/2"Ø bars "a" for 48" pipe headwall



D	Length
60	16'-9 1/2"
54	15'-2 1/2"
48	13'-8"
42	12'-1"

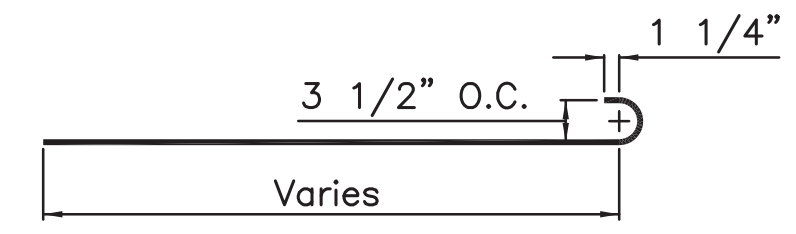
Detail Of 1/2"Ø bar "e"

Length
2'-5"
2'-8"
2'-11"
3'-2"
3'-5"
3'-8"
3'-11"
4'-2"

Detail of 1/2"Ø bars "a" for 42" pipe headwall

Length
3'-2"
3'-5"
3'-8"
3'-11"
4'-2"
4'-5"
4'-8"
4'-11"
5'-2"
5'-5"
5'-8"

Detail of 1/2"Ø bars "a" for 60" pipe headwall



Detail Of 1/2"Ø bar "c"—"c₁"

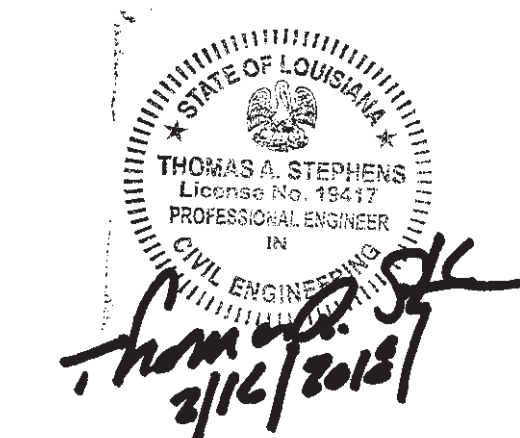
General Notes

All Concrete to be Class 6A4000
 Dimensions Reinforcing steel are to bar centers
 All exposed corners to be chamfered 3/4"
 When culvert is located at a site subject to scour, the curtain walls shall be made deeper or rip rap placed around inside face of curtain walls to prevent scouring.

QUANTITIES FOR ONE HEADWALL

DIAM. OF PIPE	BARS "a"					BARS "b"		BARS "b ₁ "				BARS "c"		BARS "c ₁ "				BARS "d"		BARS "e"		CU. YDS. CONCRETE		DEFORMED REINF. STEEL LBS.
	NO.	SHORT BAR	VARIATION	LONG BAR	NO. OF EA. LENGTH	NO.	LENGTH	SHORT BAR	VARIATION	LONG BAR	NO. OF EA. LENGTH	NO.	LENGTH	SHORT BAR	VARIATION	LONG BAR	NO. OF EA. LENGTH	NO.	LENGTH	NO.	LENGTH	WITHOUT TOE WALL	WITH TOE WALL	
42"	8	12'-11"	0'-8"	17'-7"	1	6	7'-9"	1'-10"	1'-9"	5'-4"	2	4	8'-10"	2'-9"	4'-0"	6'-9"	2	3	4'-9"	2	6'-1 1/2"	2.98	3.45	178
48"	9	14'-4"	0'-8"	19'-8"	1	6	8'-8"	1'-4"	1'-9"	6'-7"	2	4	9'-11"	4'-11"	4'-0"	8'-11"	2	3	5'-3"	2	6'-7 1/2"	3.68	4.22	221
54"	10	15'-9"	0'-8"	21'-9"	1	7	9'-7"	1'-1"	1'-9"	8'-1"	2	6	11'-0"	2'-11"	4'-0"	6'-11"	2	3	5'-9"	2	7'-1 1/2"	4.47	5.06	278
60"	11	17'-2"	0'-8"	23'-10"	1	7	10'-6"	2'-6"	1'-9"	9'-6"	2	6	12'-1"	4'-11"	4'-0"	8'-11"	2	3	6'-3"	2	7'-7 1/2"	5.33	5.98	329

All bars to be 1/2"Ø
 Slope 4:1



STANDARD PLAN NO. 601-12	DATED FEBRUARY 18, 2008	SHEET NO. 1 OF 1
-----------------------------	----------------------------	---------------------

REINFORCED CONCRETE PIPE CULVERT HEADWALLS — FLARING WINGS
 4:1 SLOPE
 42" DIAM. TO 60" DIAM.

ENGINEERING DIVISION DEPARTMENT OF PUBLIC WORKS CITY OF BATON ROUGE & PARISH OF EAST BATON ROUGE			
DESIGNED R. ELLIS	DRAWN G. VANNICE	CHECKED R. ELLIS	APPROVED T. STEPHENS

DATE	DESCRIPTION REVISIONS	BY