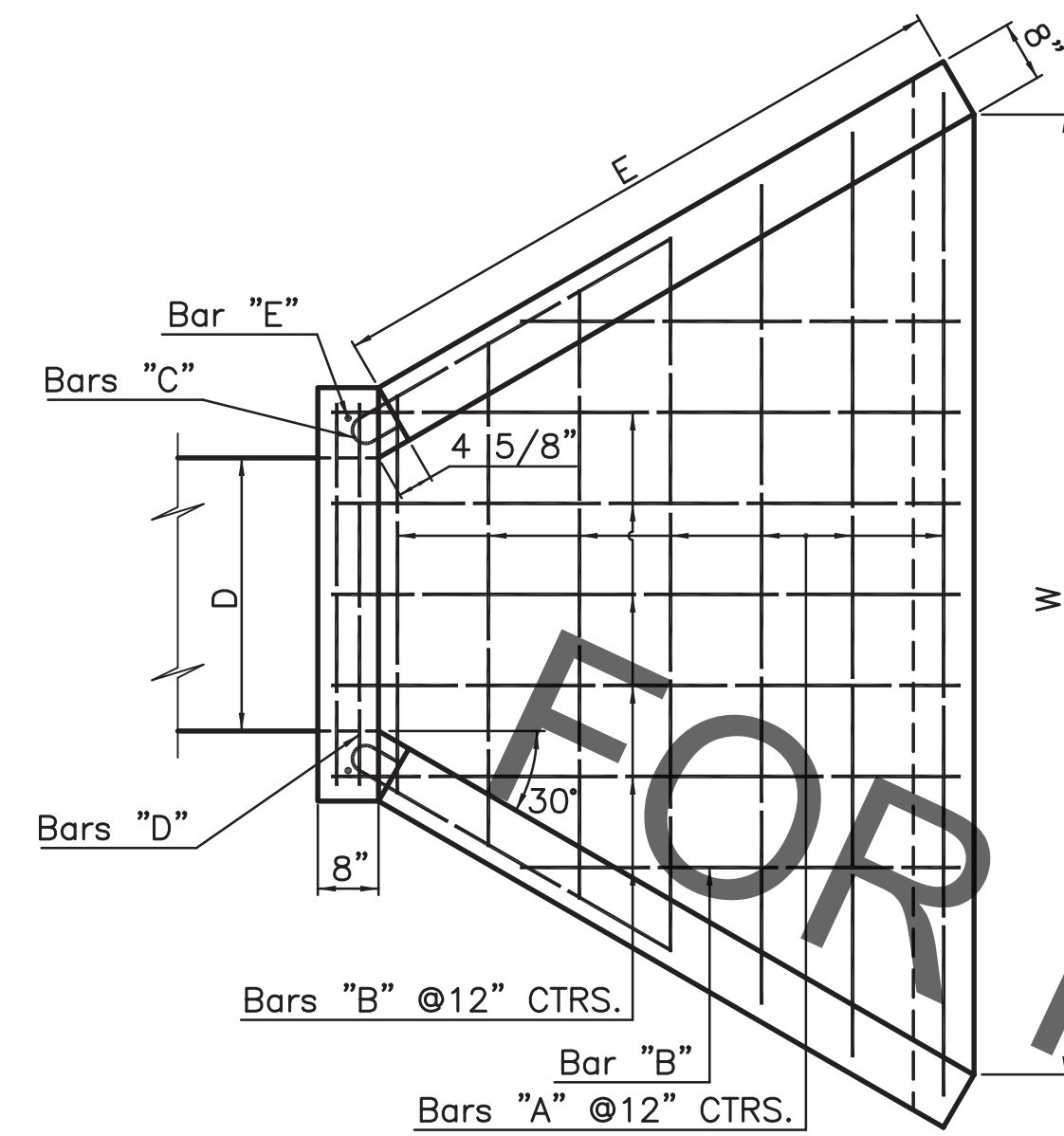
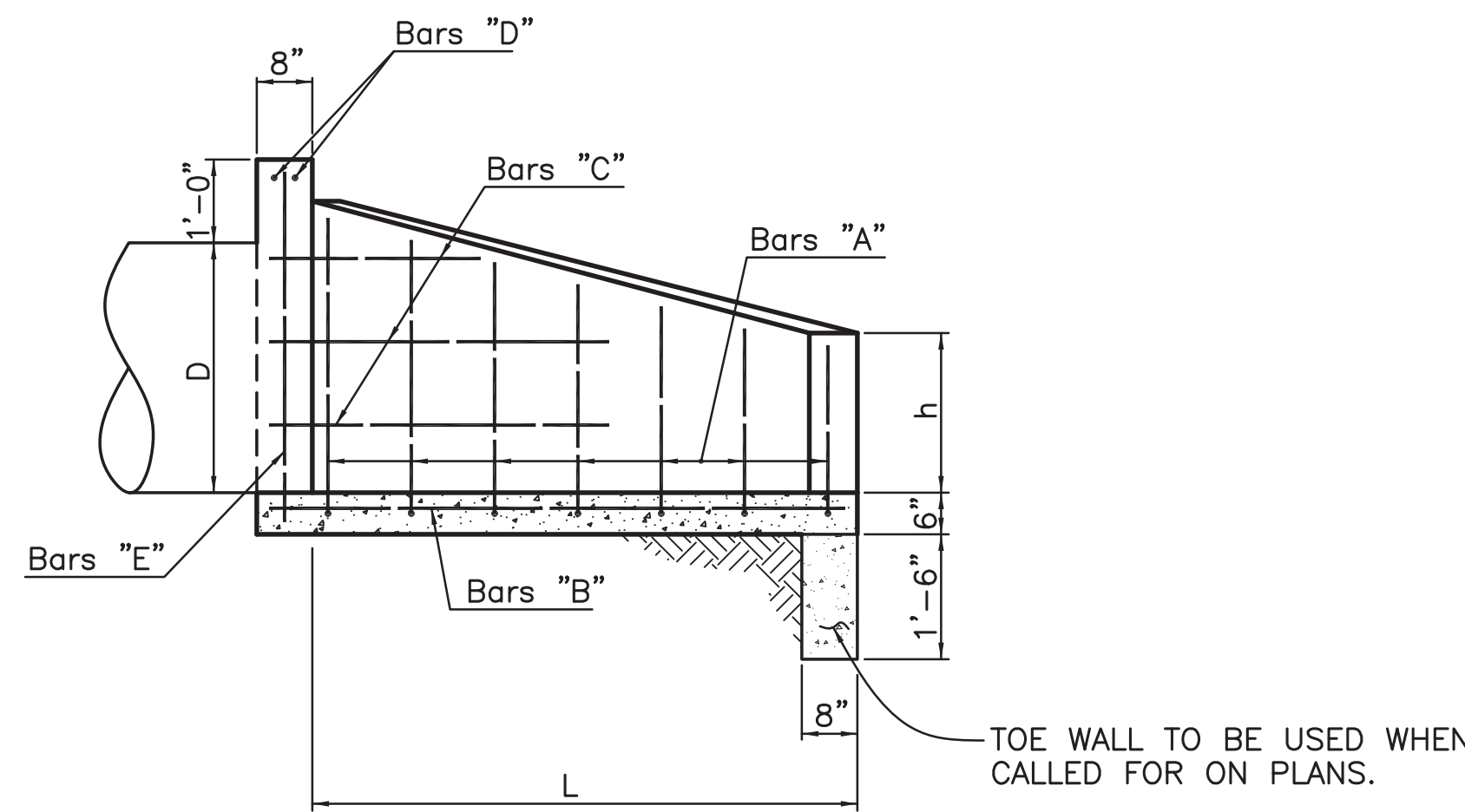


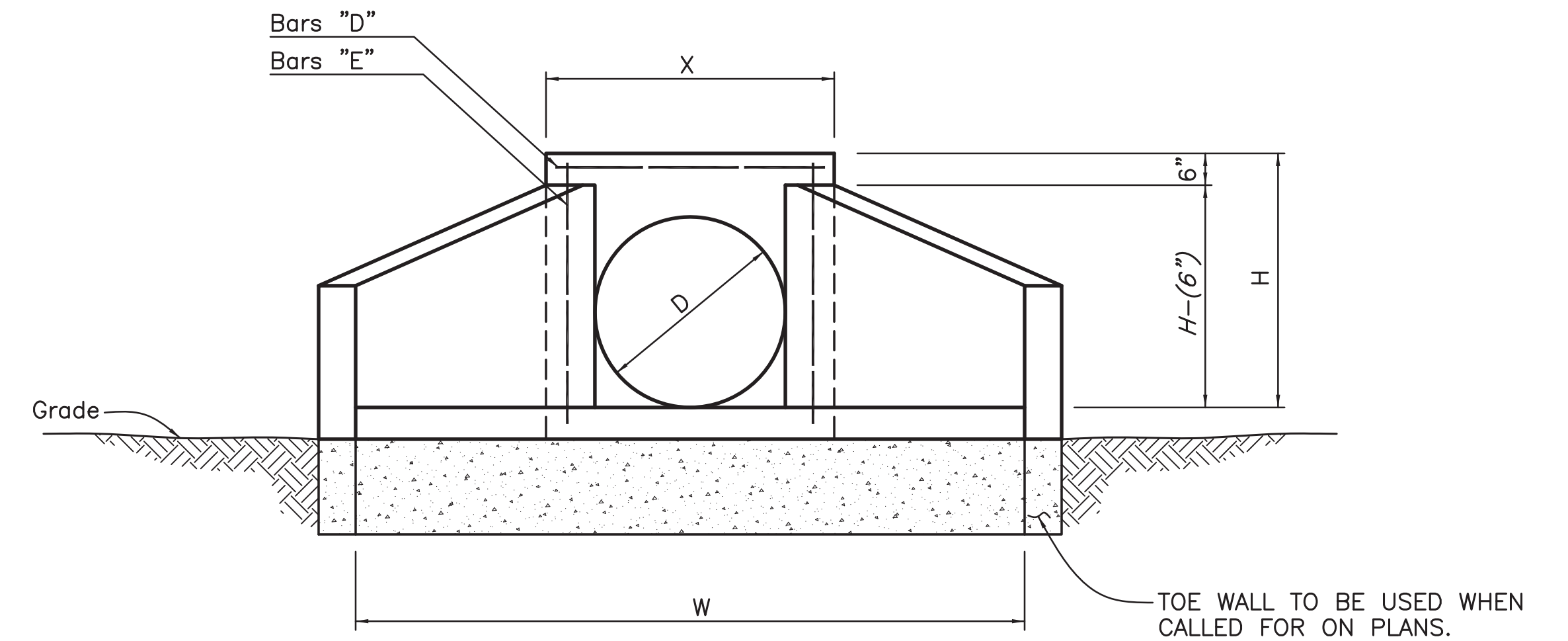
PROJECT NO.	SHEET



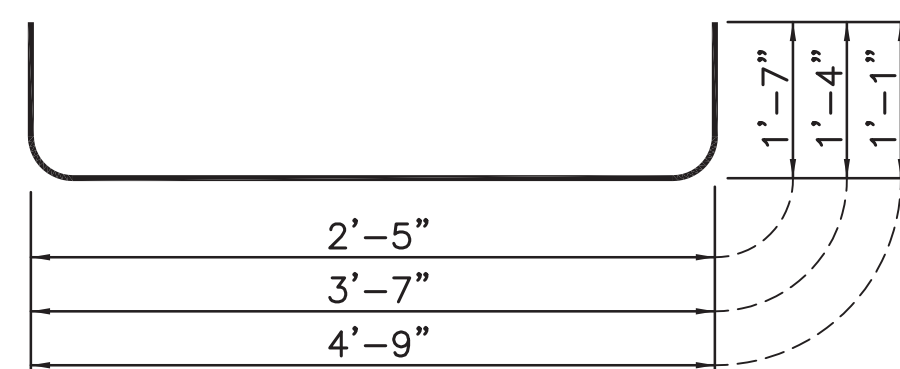
PLAN
Scale: 1/2"=1'-0"



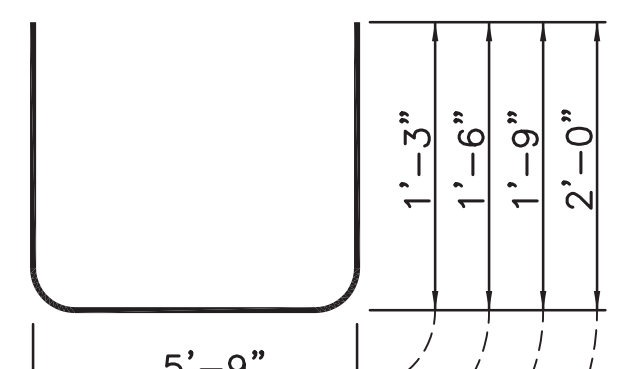
SECTION ON C
Scale: 1/2"=1'-0"



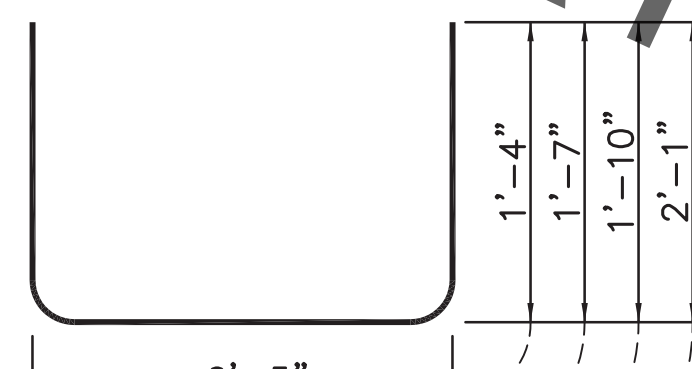
FRONT ELEVATION
Scale: 1/2"=1'-0"



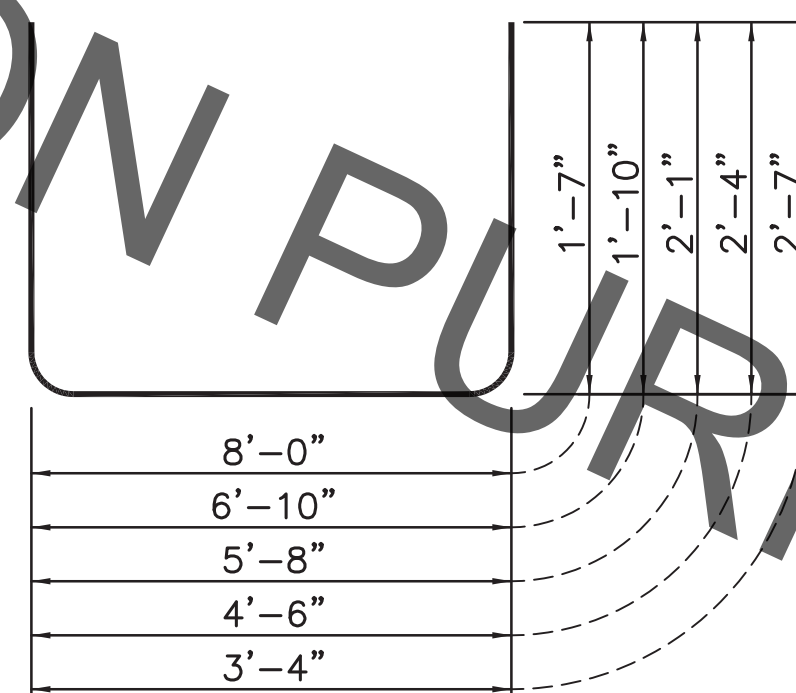
12" PIPE



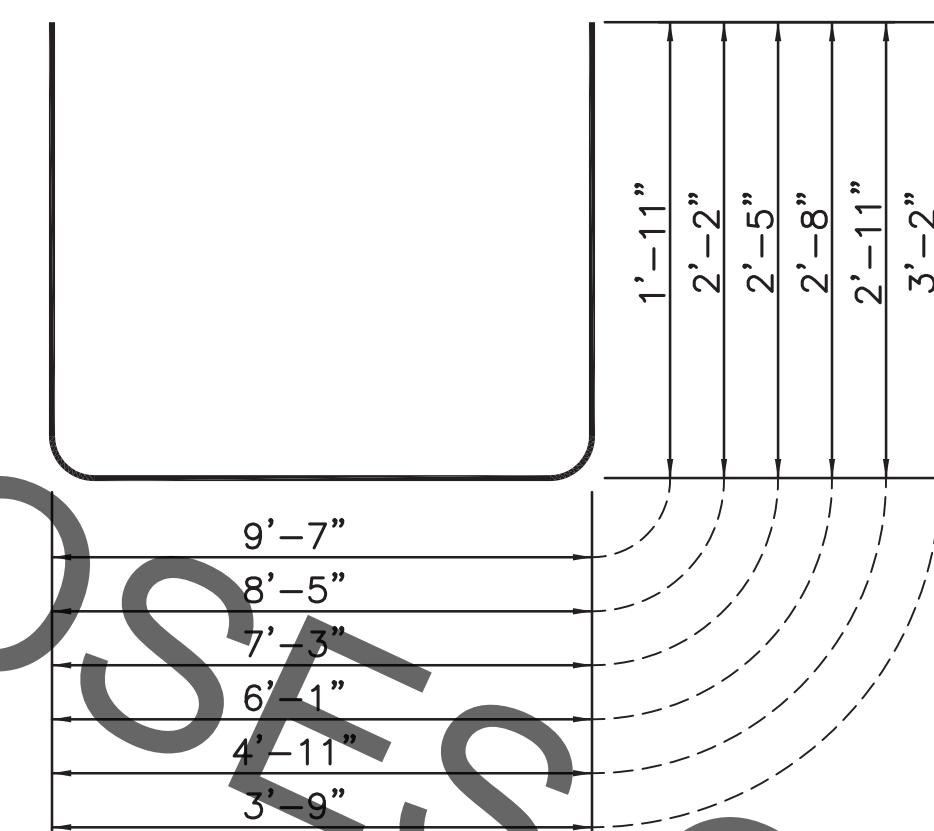
15" PIPE



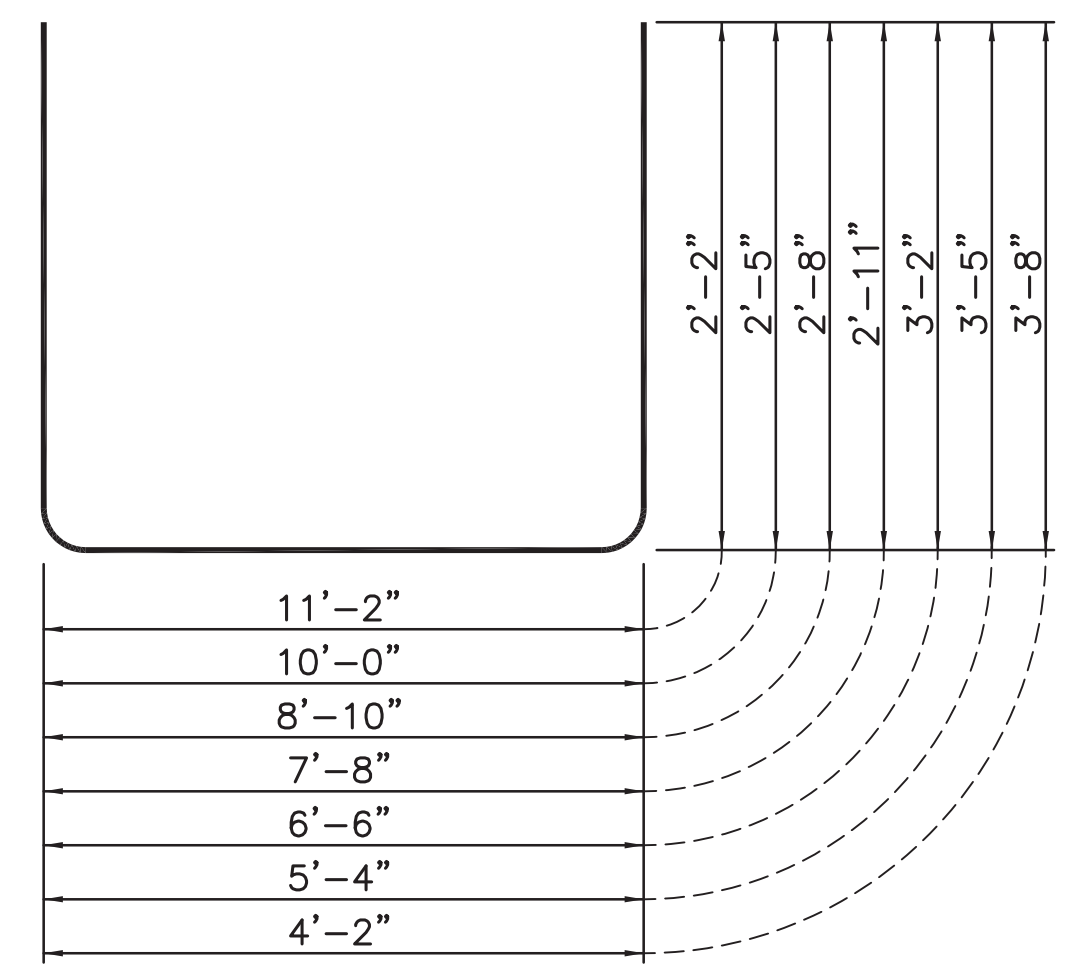
18" PIPE



24" PIPE



30" PIPE



36" PIPE

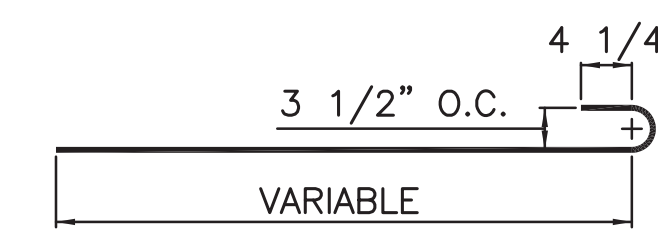
DETAILS OF BARS "A"
Scale: 3/4"=1'-0"
3" Dia. Pin

TABLE OF DIMENSIONS

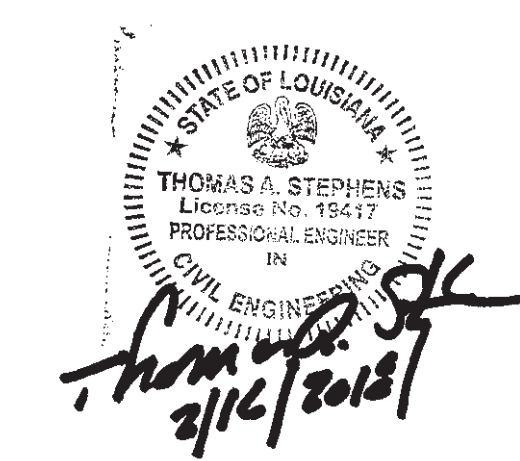
D	W	X	H	h	L	E
12"	4'-2 1/2"	2'-6 1/2"	2'-0"	0'-10"	2'-9 1/4"	2'-10"
15"	5'-0 1/2"	2'-9 1/2"	2'-3"	0'-11"	3'-3 1/2"	3'-5"
18"	5'-10 1/2"	3'-0 1/2"	2'-6"	1'-1"	3'-9 1/2"	4'-0"
24"	7'-4 1/2"	3'-6 1/2"	3'-0"	1'-4"	4'-8"	5'-0"
30"	8'-11 1/2"	4'-0 1/2"	3'-6"	1'-8"	5'-7 1/4"	6'-1"
36"	10'-6 1/2"	4'-6 1/2"	4'-0"	1'-11"	6'-6 1/2"	7'-2"

QUANTITIES FOR ONE HEADWALL

DIAM. OF PIPE	BARS "A"				BARS "B"		BARS "C"		BARS "D"		BARS "E"		BARS "H"		CU. YDS. CONCRETE		DEFORMED REINF. STEEL LBS.
	SHORT BAR	VARIATION	LONG BAR	NO. OF EA. LENGTH	NO.	LENGTH	NO.	LENGTH	NO.	LENGTH	NO.	LENGTH	NO.	LENGTH	WITHOUT TOE WALL	WITH TOE WALL	
12"	5'-7"	0'-8"	6'-11"	1	-	-	4	2'-4"	2	2'-3"	2	2'-2"	3	3'-1"	0.52	0.71	31
15"	6'-3"	0'-8"	8'-3"	1	2	2'-0"	4	2'-8"	2	2'-6"	2	2'-5"	3	3'-8"	0.66	0.88	43
18"	7'-1"	0'-8"	9'-1"	1	2	1'-10"	4	3'-10"	2	2'-9"	2	2'-8"	3	4'-1"	0.87	1.11	50
24"	8'-6"	0'-8"	11'-2"	1	2	2'-6"	4	3'-8"	2	3'-3"	2	3'-0"	4	5'-0"	1.26	1.57	68
30"	10'-1"	0'-8"	13'-5"	1	2	3'-8"	6	3'-1"	2	3'-9"	2	3'-6"	4	5'-11"	1.76	2.13	90
36"	11'-6"	0'-8"	15'-6"	1	2	4'-7"	6	3'-11"	2	4'-3"	2	4'-2"	5	6'-6"	2.32	2.74	118



DETAIL OF BARS "C"
Scale: 3/4"=1'-0"
3" Dia. Pin



STANDARD PLAN NO. 601-10	DATED FEBRUARY 18, 2008	SHEET NO. 1 OF 1
-----------------------------	----------------------------	---------------------

PIPE CULVERT HEADWALL
4:1 SLOPE
12" DIAM. TO 36" DIAM.

ENGINEERING DIVISION DEPARTMENT OF PUBLIC WORKS CITY OF BATON ROUGE & PARISH OF EAST BATON ROUGE			
DESIGNED R. ELLIS	DRAWN G. VANNICE	CHECKED R. ELLIS	APPROVED T. STEPHENS

DATE	DESCRIPTION	BY
	REVISIONS	

ENGINEERING BOARD STUDY FORM 5-V