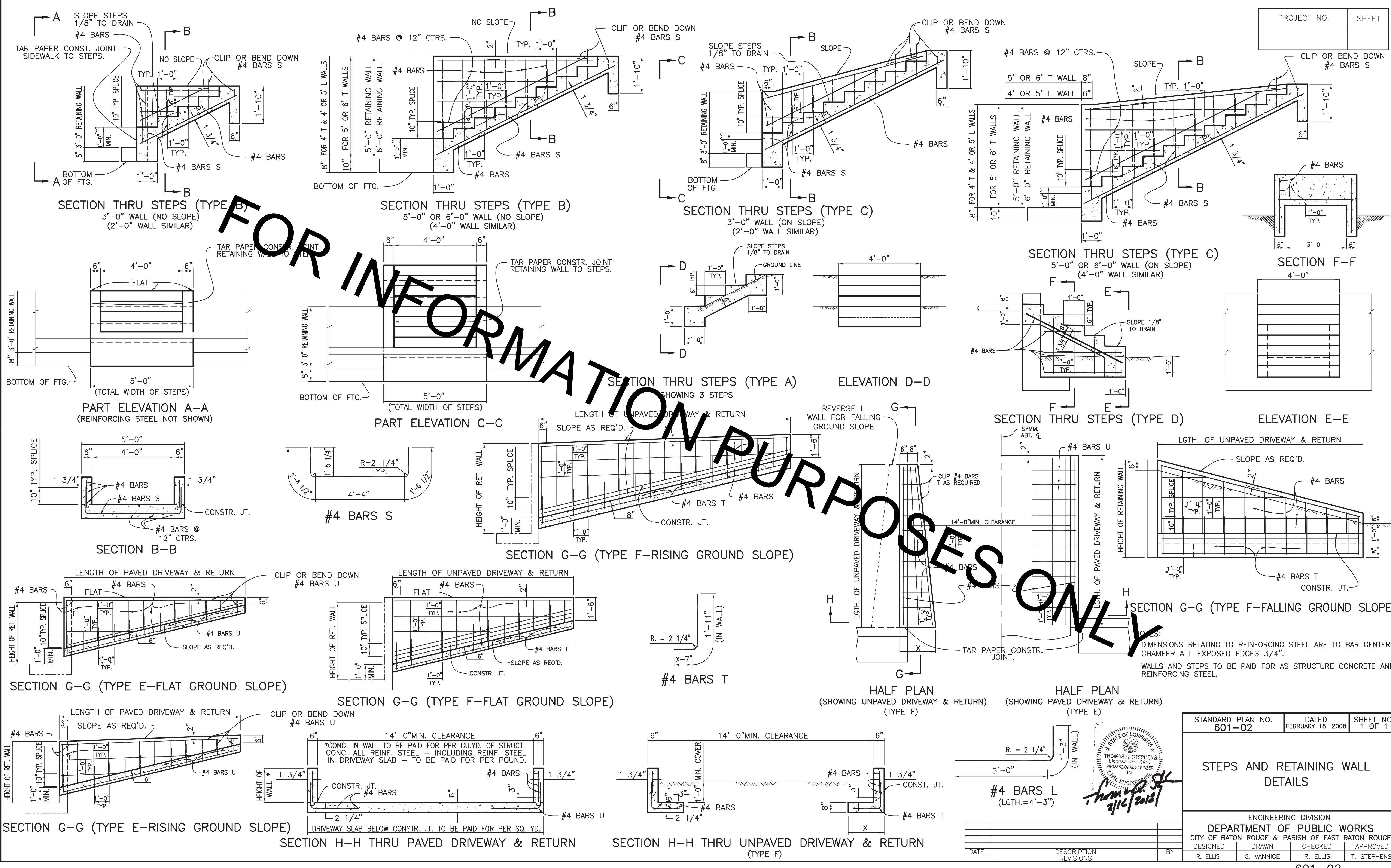
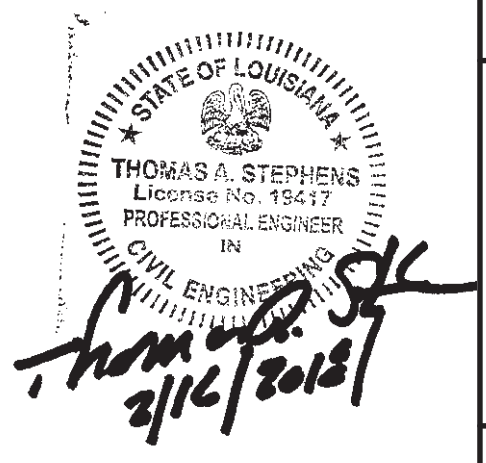


PROJECT NO.	SHEET



FOR INFORMATION PURPOSES ONLY



STANDARD PLAN NO. 601-02	DATED FEBRUARY 18, 2008	SHEET NO. 1 OF 1
STEPS AND RETAINING WALL DETAILS		
ENGINEERING DIVISION DEPARTMENT OF PUBLIC WORKS CITY OF BATON ROUGE & PARISH OF EAST BATON ROUGE		
DESIGNED R. ELLIS	DRAWN G. VANNICE	CHECKED R. ELLIS
		APPROVED T. STEPHENS

DATE	DESCRIPTION / REVISIONS	BY