

- * Dowel Bars and Longitudinal Tie Bars shall conform to STD. PLAN CPS 502-01
- △ New Joint to be Formed or Sawed
- ① (a) Tie bars shall be placed along the Longitudinal Joint with respect to the existing Transverse Joint in the Adjacent Slab.
- ② (a) 24" Tie bars shall be placed in the Longitudinal Joint.
- ③ Tie bar (.) to be used along Longitudinal Cut of 1/2 Lane Patch.

DETAILS FOR FULL DEPTH PATCHING OF JOINTED CONCRETE PAVEMENT

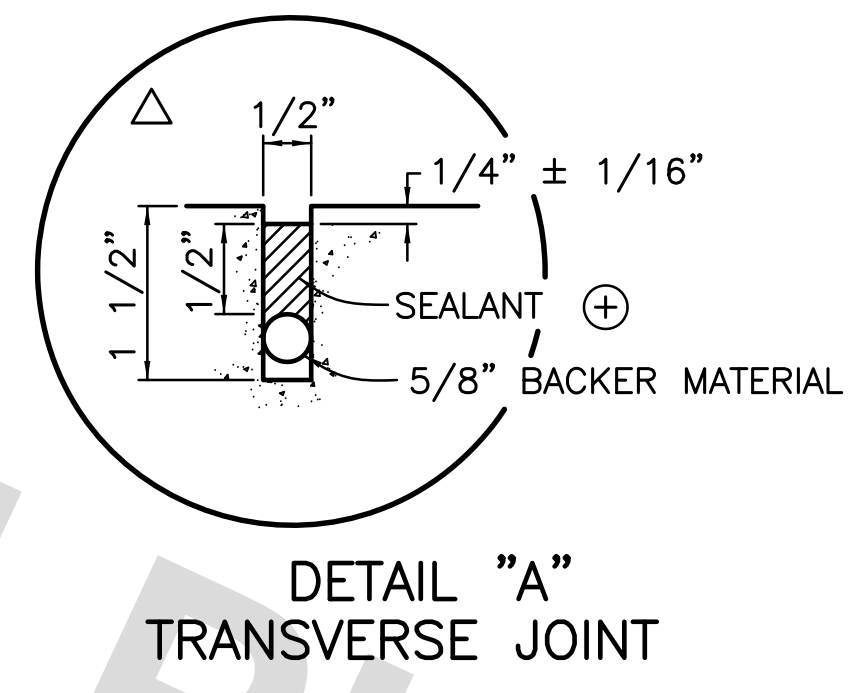
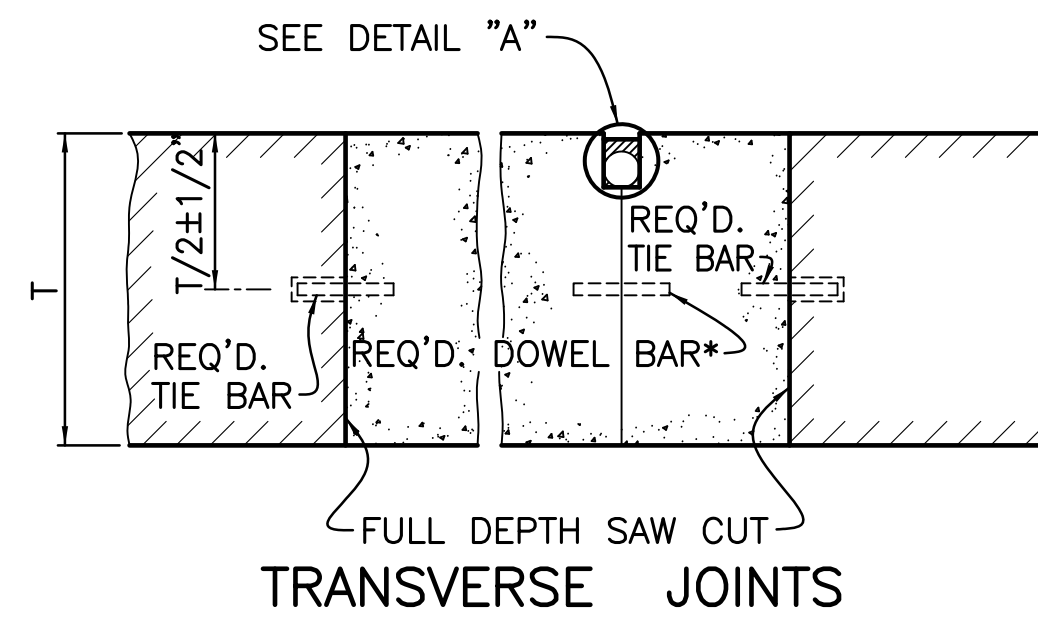
TRANSVERSE JOINTS

Deformed Tie Bars for Transverse Joints shall be 1" in diameter and 24" in length.

Deformed Tie Bars for Transverse Joints shall be installed in existing pavement by drilling holes 1/8" larger than the diameter of the Bar to a depth of 12" and filling the holes with an approved Epoxy Resin (DOTD QPL) insertion of the Bars. Spacing shall be at 12".

Face of existing Concrete shall be coated with an approved Epoxy Adhesive (DOTD QPL) before placing Concrete.

⊕ Sealant shall conform to Subs. 1007-2 of the Std. Specs.



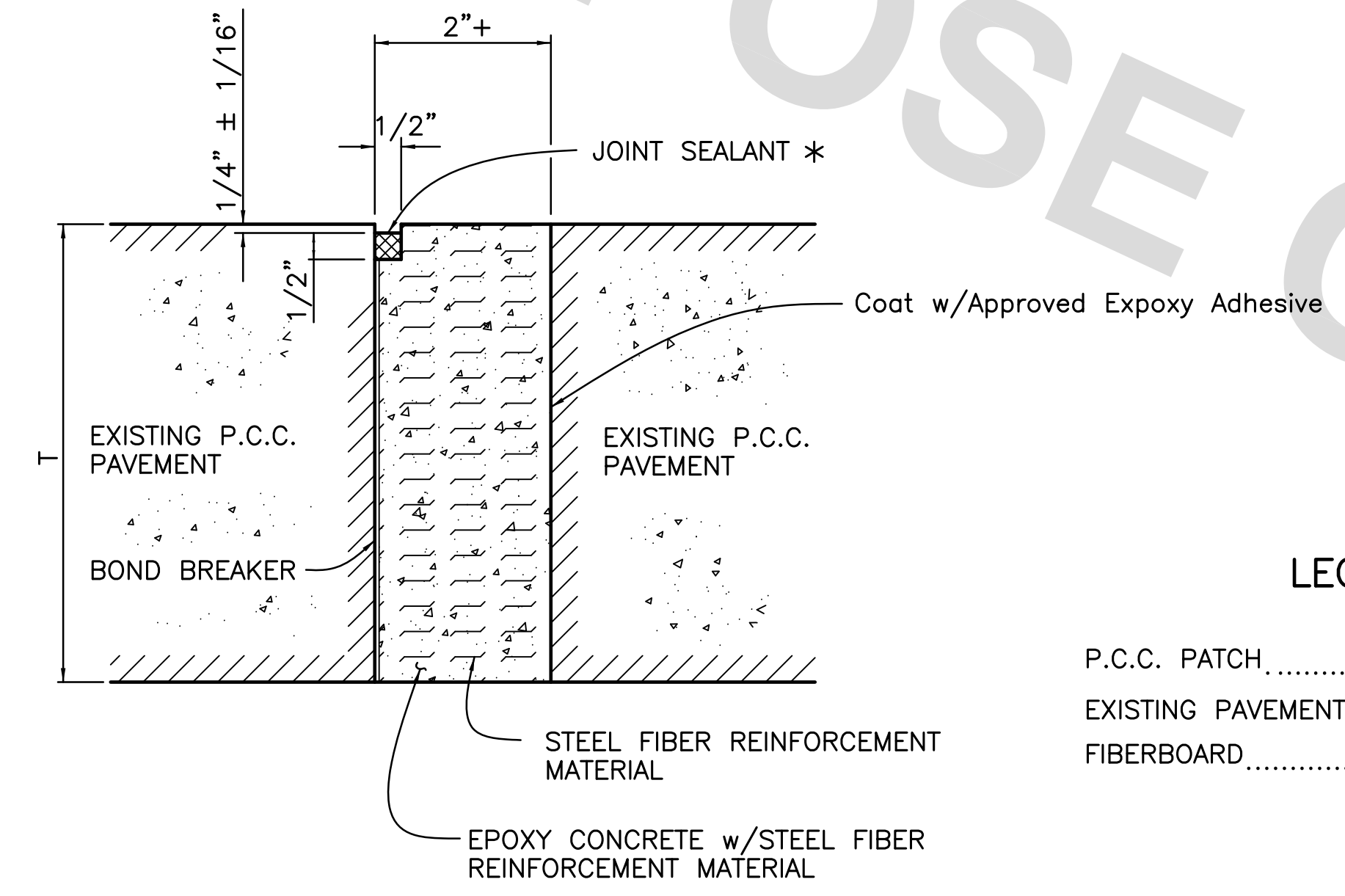
TRANSVERSE JOINT WIDTH (W)	LONGITUDINAL JOINTS WIDTH (W)	D	BACKER MATERIAL (INCH)	MINIMUM DEPTH TO REMOVE INCOMPRESSIBLES
1/2" - 1"	3/8" - 1"	1/2"	W + 25 %	T/2
>1" - 3"	>1" - 2"	W/2	W + 25 %	T

NOTES:

Backer Material shall consist of Heat Resistant, Closed - Cell Cross - Linked Polyethylene or Polyolefin Foam.

DETAIL FOR CLEANING AND RESEALING EXISTING TRANSVERSE & LONGITUDINAL JOINTS

* Sealant shall conform to Subs. 1007-2 of the Std. Specs.

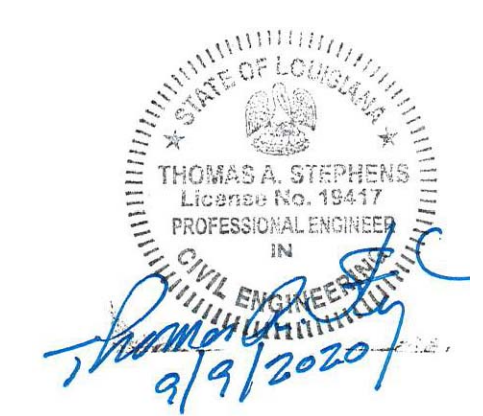


NOTES:

Face of existing concrete (opposite face with Bond Breaker) shall be coated with an approved Epoxy Adhesive (LDOTD QPL) before placement of Epoxy Concrete w/ Steel Fiber Reinforcement Material.

LEGEND

P.C.C. PATCH	
EXISTING PAVEMENT TO REMAIN	
FIBERBOARD	



STANDARD PLAN NO. 502-02	DATED DECEMBER 12, 2007	SHEET NO. 1 OF 1
CONCRETE PAVEMENT REPAIR		
ENGINEERING DIVISION DEPARTMENT OF PUBLIC WORKS CITY OF BATON ROUGE & PARISH OF EAST BATON ROUGE		
DESIGNED R.K. BANKS	DRAWN G.VANNICE	CHECKED R.K. BANKS
		APPROVED T. STEPHENS

DATE	DESCRIPTION REVISIONS	BY