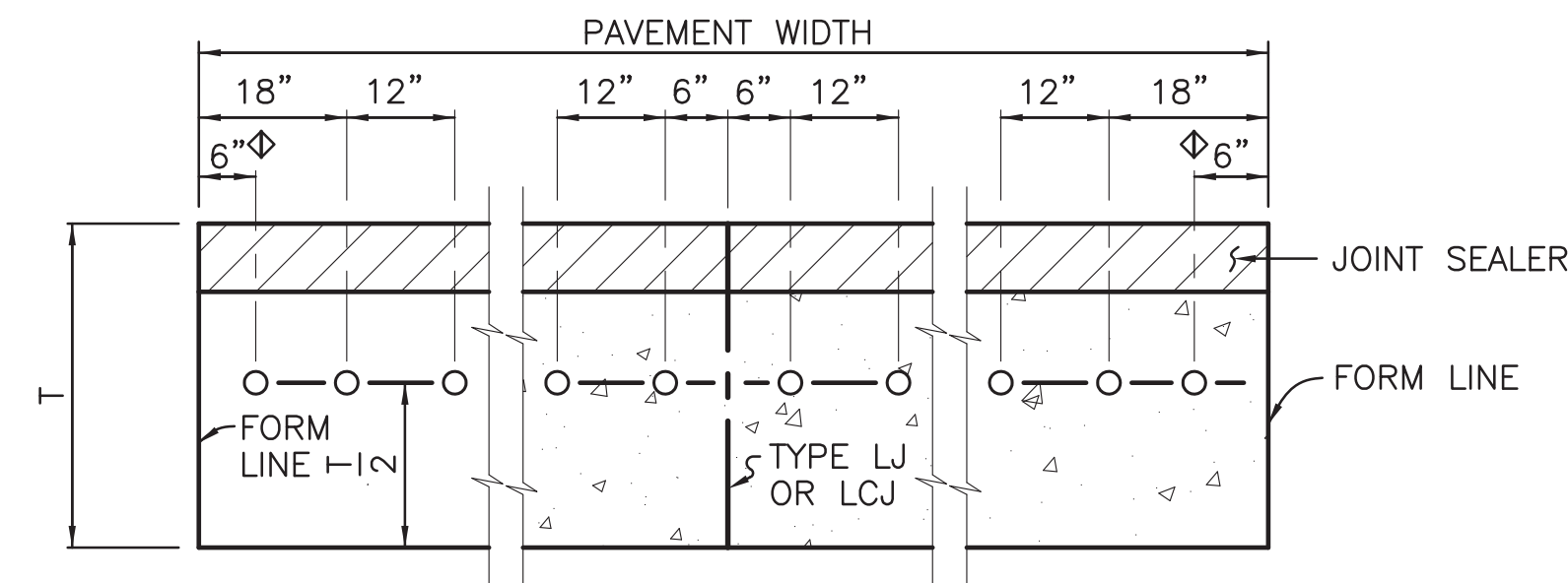


TABLE 1
(ALL DIMENSIONS ARE IN INCHES)

PAVEMENT THICKNESS "T"	DOWEL BARS ⊗			MINIMUM DEPTH OF JOINT		
	SIZE	LENGTH	SPACING	C.J. & D.J.	L.J.	
6	1	18	12	2	2	
8	1 1/4	18	12	3	3	
9	1 1/4	18	12	3	3 1/2	
10	1 1/4	18	12	3 1/2	4	

NOTES:

- ALL JOINTS 10' MIN. SPACING 20' MAX. SPACING
- MAXIMUM SPACING ON EJ OR EJ-1 WILL NOT EXCEED 500 FEET

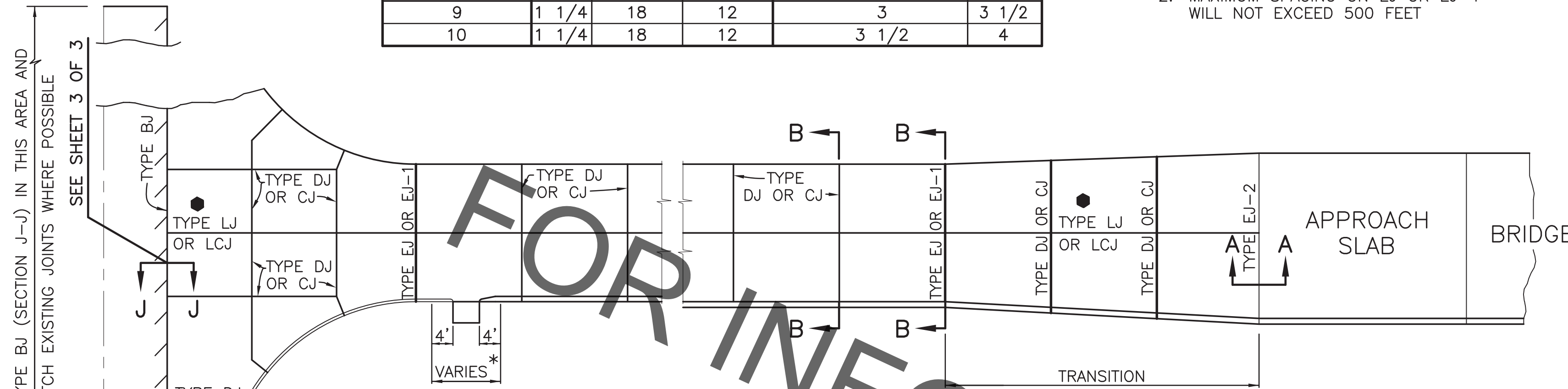


SECTION B-B

DOWEL BAR SPACING FOR TYPE DJ, CJ AND EJ JOINTS
 ⊕ 9" - WHEN MECHANICAL PLACEMENT OF DOWEL BARS IS USED.

GENERAL NOTES

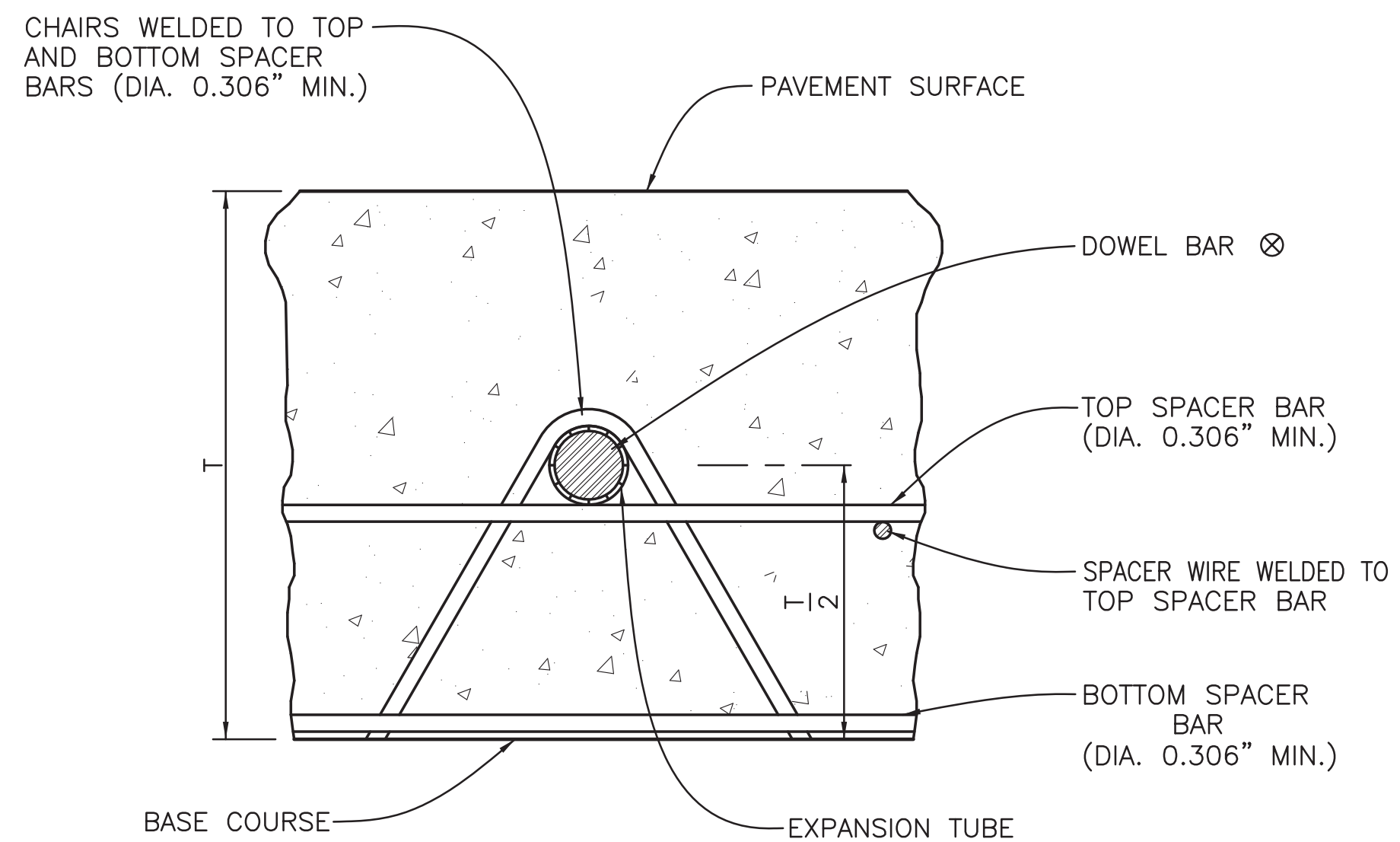
- OUTSIDE PAVEMENT EDGES SHALL BE ROUNDED 1/4".
- ON TYPE EJ JOINTS, EXPANSION TUBES AND STOPS SHALL BE PLACED ON ALTERNATE ENDS OF EACH DOWEL BAR. BARS SHALL BE SPOT WELDED ON ALTERNATE ENDS TO DOWEL BASKETS.
- TYPE LJ JOINTS SHALL BE SAWED 1/8" WIDE AS SHOWN IN DETAIL "D" ON SHEET 2 TO THE DEPTH SHOWN IN TABLE 1. THEY SHALL BE CLEANED AND SEALED WITH A JOINT SEALER CONFORMING TO SUBSECTION 1007-2.
- TYPE DJ AND CJ JOINTS SHALL BE TO THE DEPTH SHOWN IN TABLE 1. IF SAWED, THEY SHALL HAVE AN INITIAL CUT USING A 1/8" BLADE. OTHERWISE, JOINTS SHALL CONFORM TO DETAILS "B" AND "C" ON SHEET 2. THEY SHALL ALSO BE SAND BLASTED AND CLEANED PRIOR TO SEALING USING A JOINT SEALER CONFORMING TO SUBSECTION 1007-2.
- TYPE DJ JOINTS MAY ALSO BE A COMBINATION JOINT FORMER/SEALER AS SHOWN IN DETAIL "A" ON SHEET 2 CONFORMING TO SUBSECTION 1007-4.
- TYPE EJ JOINTS SHALL BE FORMED FULL DEPTH, USING A WOOD FILLER, EXCEPT FOR THE TOP 1/2" WHICH SHALL BE A JOINT SEALER CONFORMING TO SUBSECTION 1007-2. THE WOOD FILLER SHALL CONFORM TO SUBSECTION 1007-1(b).
- IN LIEU OF DOWEL BASKET, APPROVED VIBRATORY PLACEMENT OF DOWEL BARS AND TIE BARS WILL BE PERMITTED. DOWEL BASKETS SHALL BE SIMILAR TO ONES SHOWN, OR APPROVED EQUALS.
- INSTALL GEOTEXTILE FABRIC UNDER CJ, DJ AND EJ TYPE JOINTS WHEN CONCRETE IS PLACED ON UNSTABILIZED OR UNTREATED BASE COURSE WHEN DOWEL BARS ARE VIBRATED IN PLACE. THE GEOTEXTILE FABRIC SHALL BE ANCHORED TO BASE COURSE WITH PINS.
- TRANSVERSE EXPANSION JOINTS SHALL NOT BE USED FOR CONSTRUCTION JOINTS.
- TIE BARS SHALL NOT BE PLACED WITHIN 18" OF CONTRACTION (DUMMY) OR EXPANSION JOINTS.
- TRANSVERSE EXPANSION JOINTS (TYPE EJ OR EJ-1) SHALL BE PLACED AT MAXIMUM 500-FOOT INTERVALS IN ADDITION TO BEING PLACED AT JUNCTIONS WITH OTHER CONCRETE PAVEMENTS.



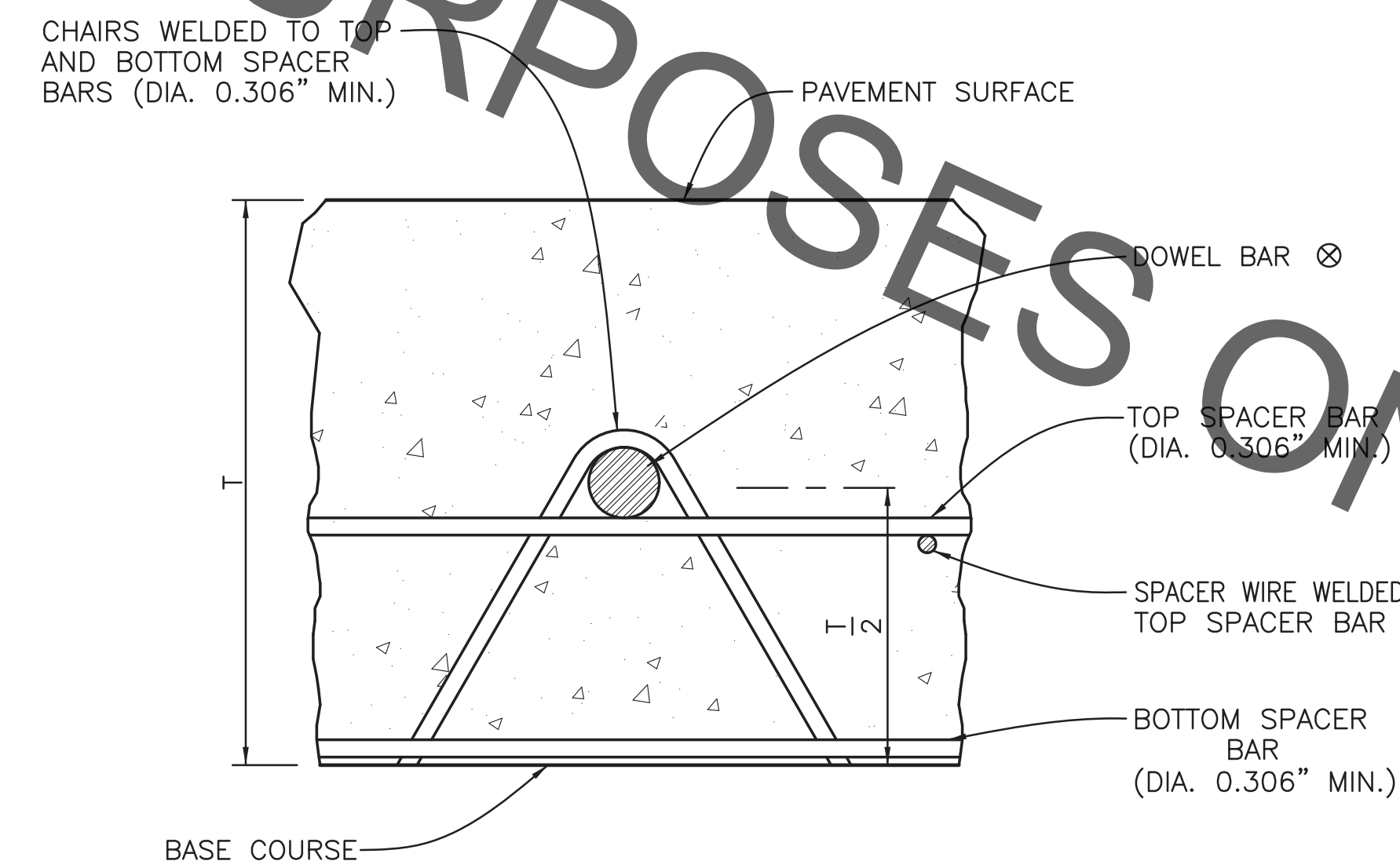
PLAN VIEW OF ROADWAY SHOWING JOINTS

WHEN POSSIBLE, AT CURB INLETS NO JOINTS SHALL BE PLACED IN THE LIMITS SHOWN.

USE TYPE LCJ JOINT WITH SPLIT SLAB CONSTRUCTION.



SECTION C-C
 ⊗ SEE TABLE 1



SECTION D-D
 ⊗ SEE TABLE 1

STATE OF LOUISIANA
 THOMAS A. STEPHENS
 License No. 18417
 PROFESSIONAL ENGINEER
 IN
 CIVIL ENGINEERING
Thomas A. Stephens
 2/16/2013

STANDARD PLAN NO. 502-01	DATED January 18, 2008	SHEET NO. 1 OF 3
-----------------------------	---------------------------	---------------------

CONCRETE PAVEMENT
 DETAILS

ENGINEERING DIVISION DEPARTMENT OF PUBLIC WORKS CITY OF BATON ROUGE & PARISH OF EAST BATON ROUGE			
DESIGNED	DRAWN	CHECKED	APPROVED
R.E.E./N.A.R.	G. VANNICE	N.A.R./R.E.E.	T. STEPHENS

DATE	DESCRIPTION	BY
	REVISIONS	