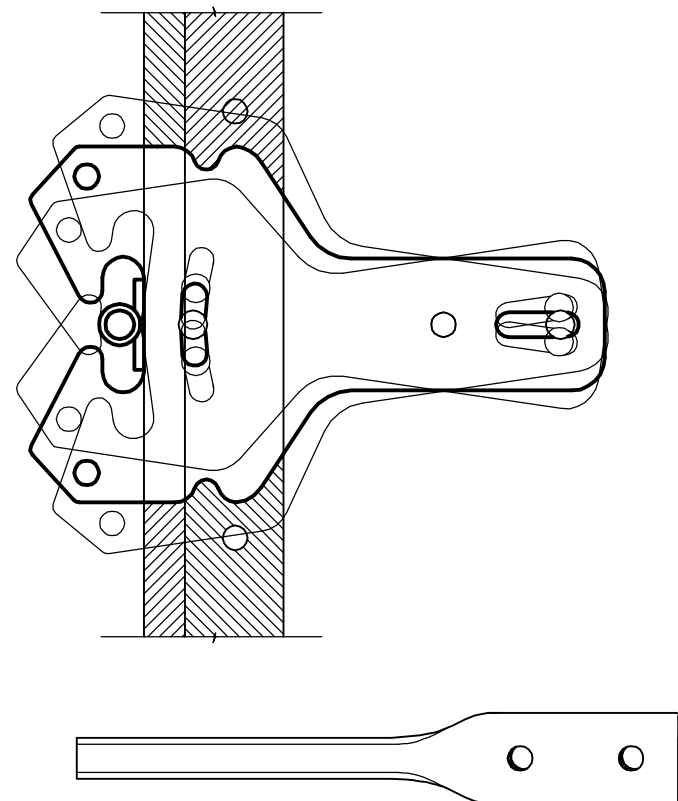
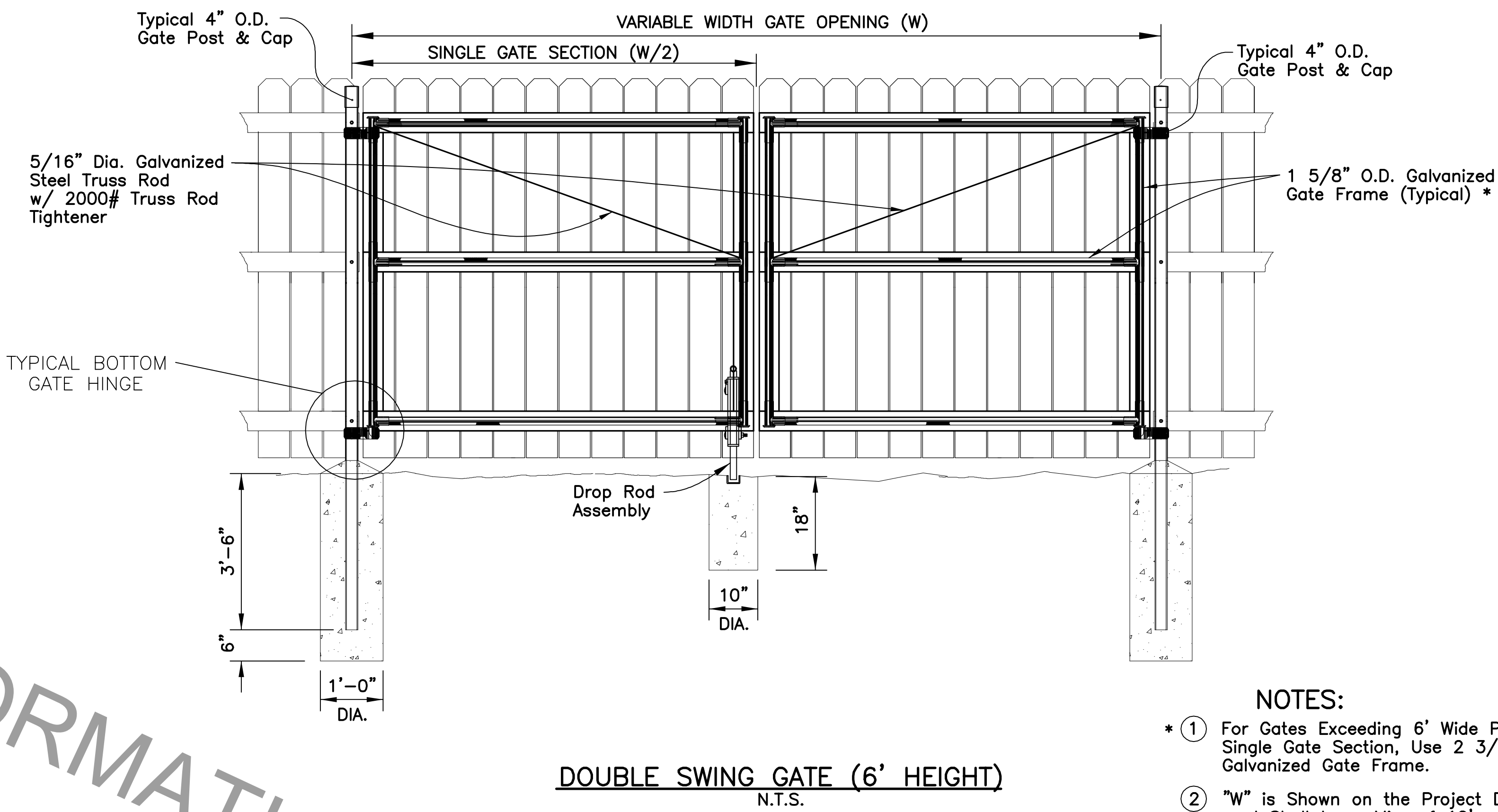
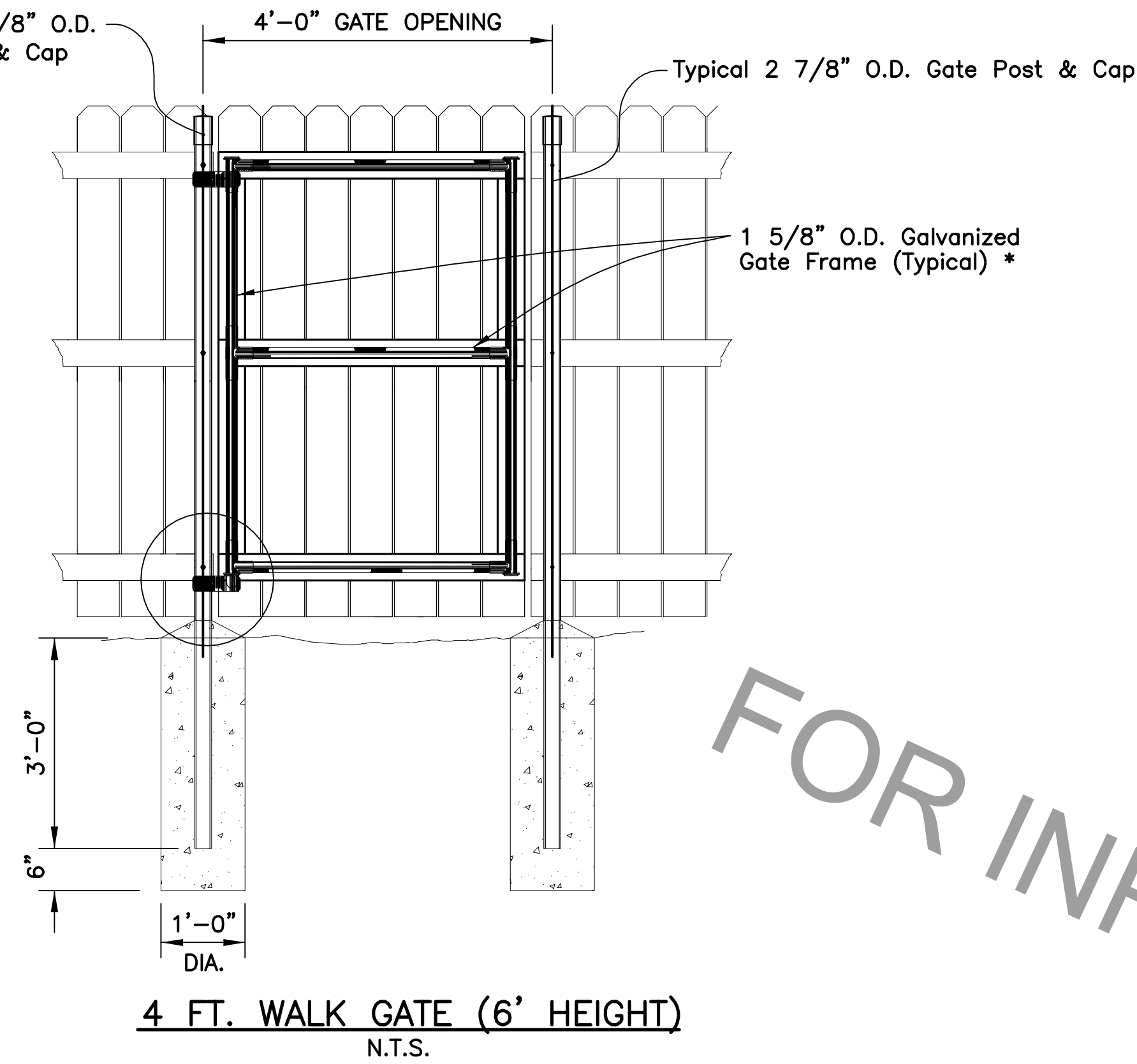
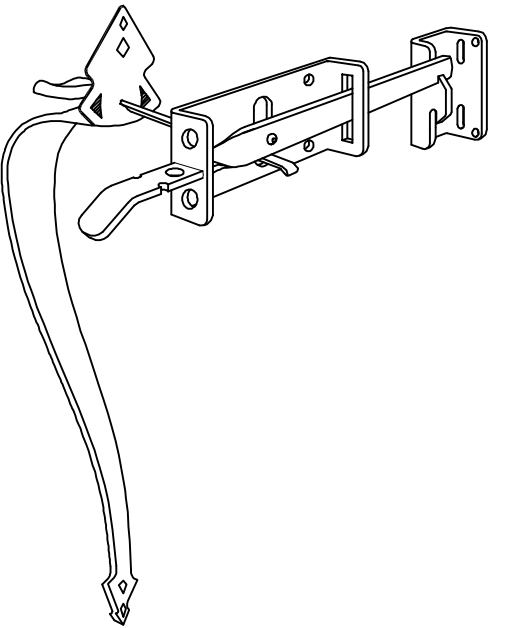


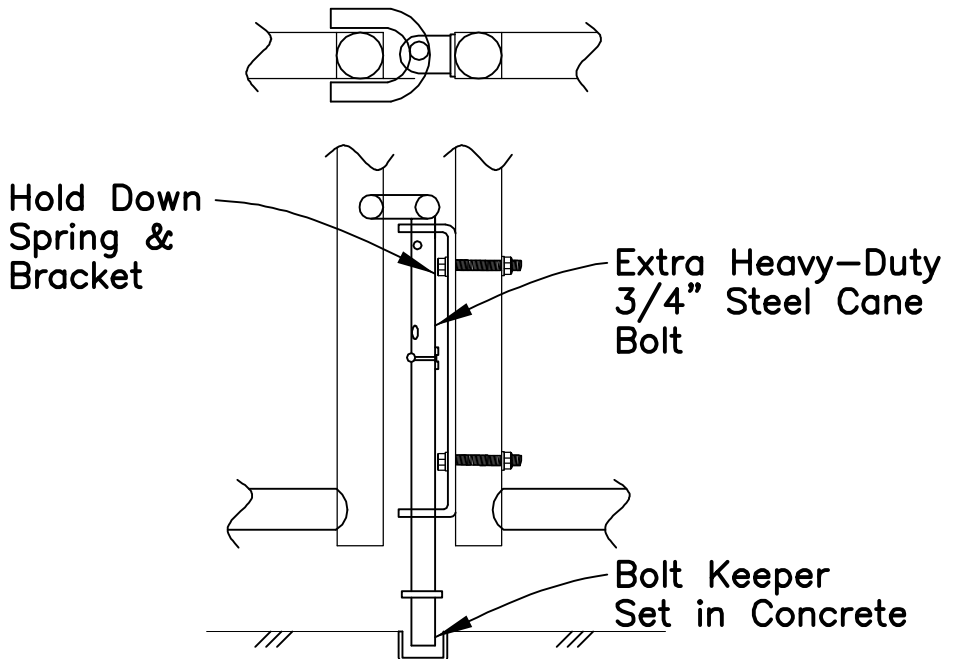
PROJECT NO.	SHEET



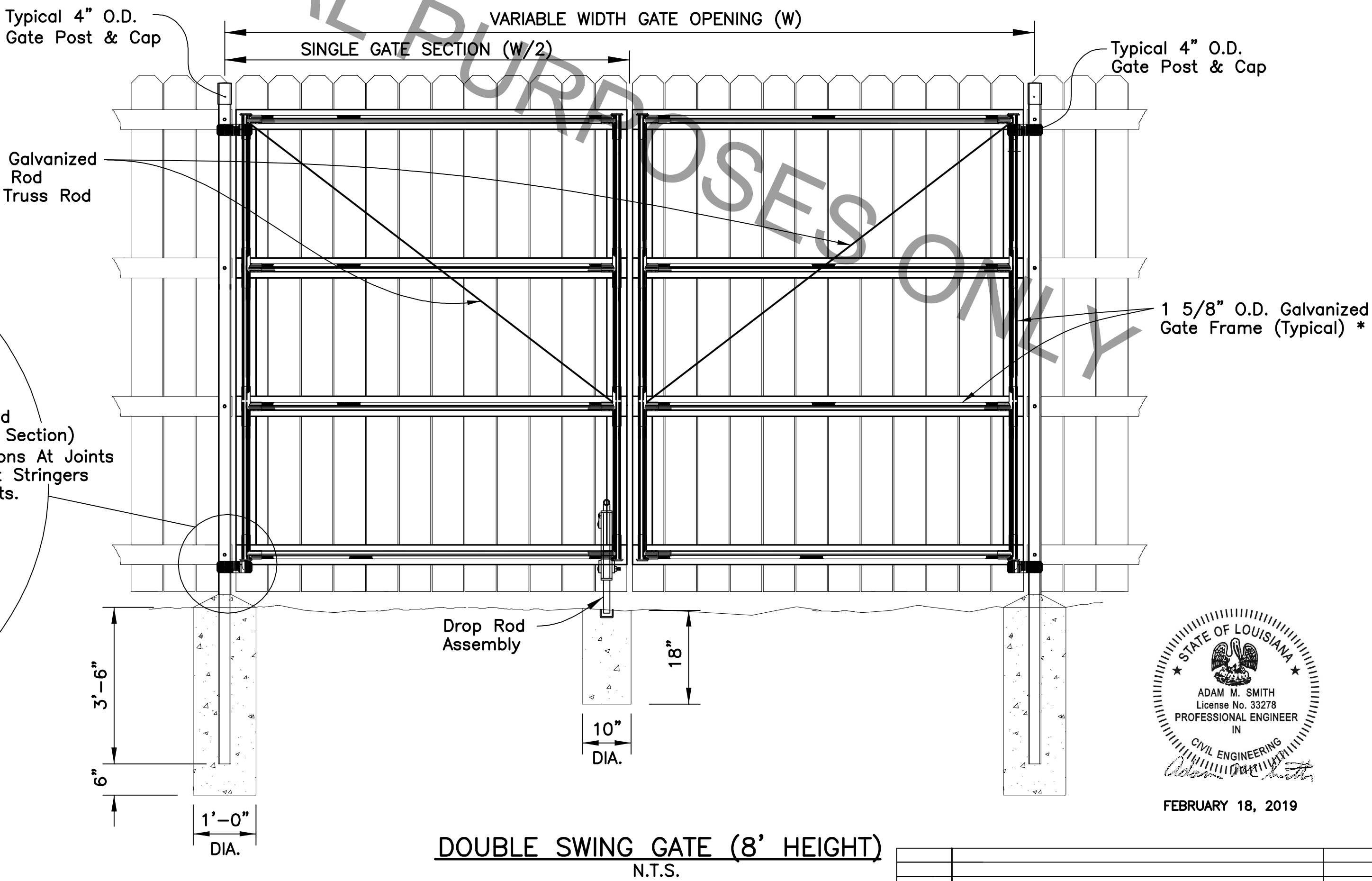
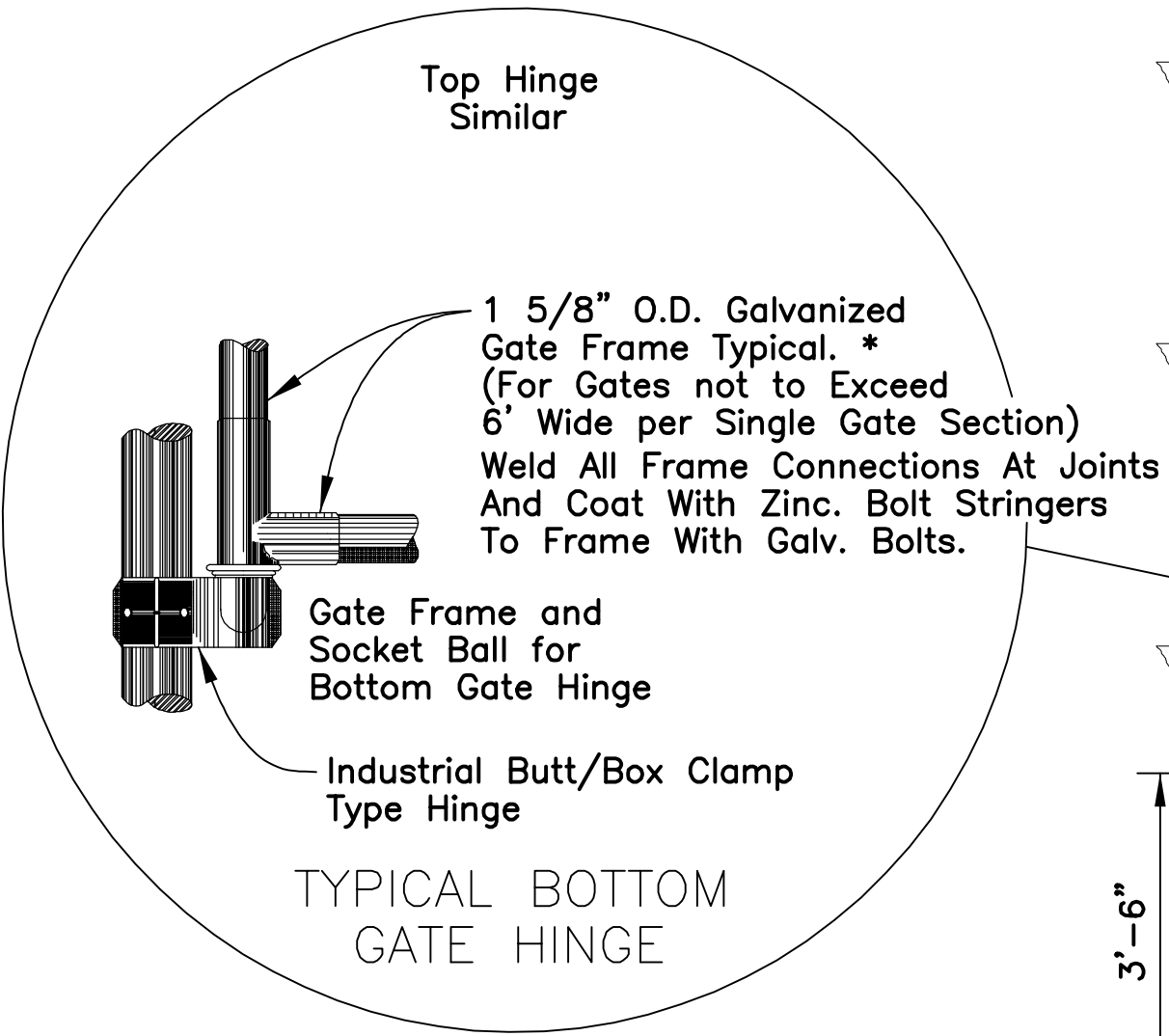
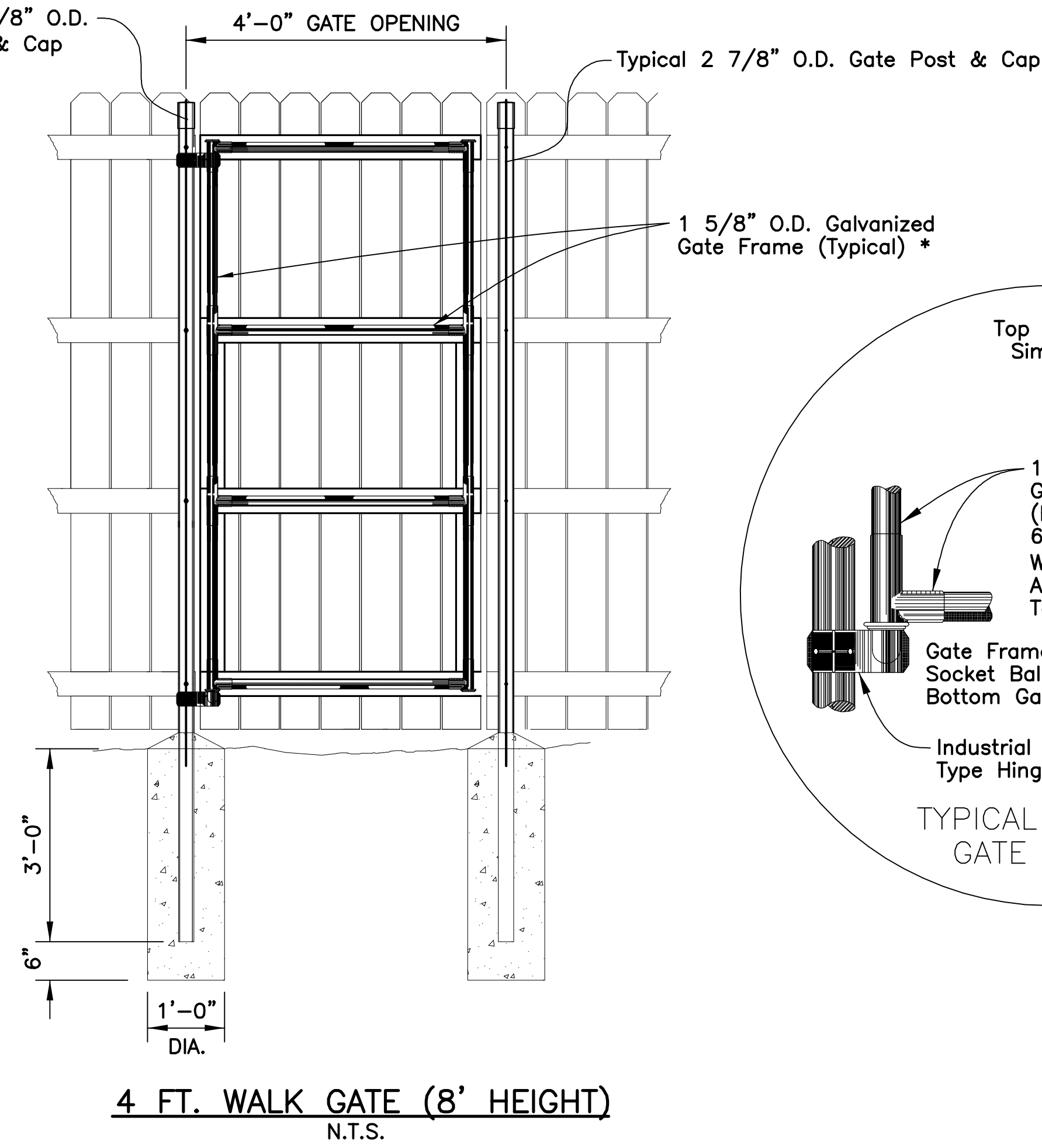
CATCH LATCH DETAIL
N.T.S.



CATCH LATCH DETAIL
N.T.S.



DROP ROD ASSEMBLY
N.T.S.



STANDARD PLAN NO. 902-06	DATED February 14, 2019	SHEET NO. 2 OF 3
PUMP STATION WALK AND DOUBLE SWING GATE FOR WOODEN FENCE DETAILS (6FT. OR 8FT. HEIGHT)		
ENGINEERING DIVISION DEPARTMENT OF PUBLIC WORKS CITY OF BATON ROUGE & PARISH OF EAST BATON ROUGE		
DESIGNED J. CRAIN	DRAWN S. CORTEZ	CHECKED R. LAMBERT
APPROVED A. SMITH		

DATE	DESCRIPTION REVISIONS	BY