

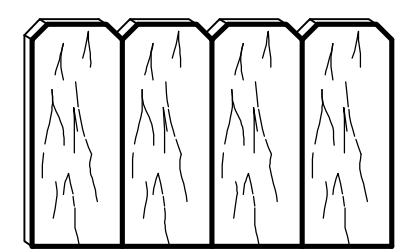
PROJECT NO.	SHEET

**PGT<sup>®</sup> PIPE GRIP TIES OR APPROVED EQUAL.**

THE PGT1.5 SHALL BE FOR 1 7/8" OUTSIDE DIAMETER LINE POSTS, AND THE PGT2 SHALL BE FOR 2 3/8" OUTSIDE DIAMETER CORNER POSTS.

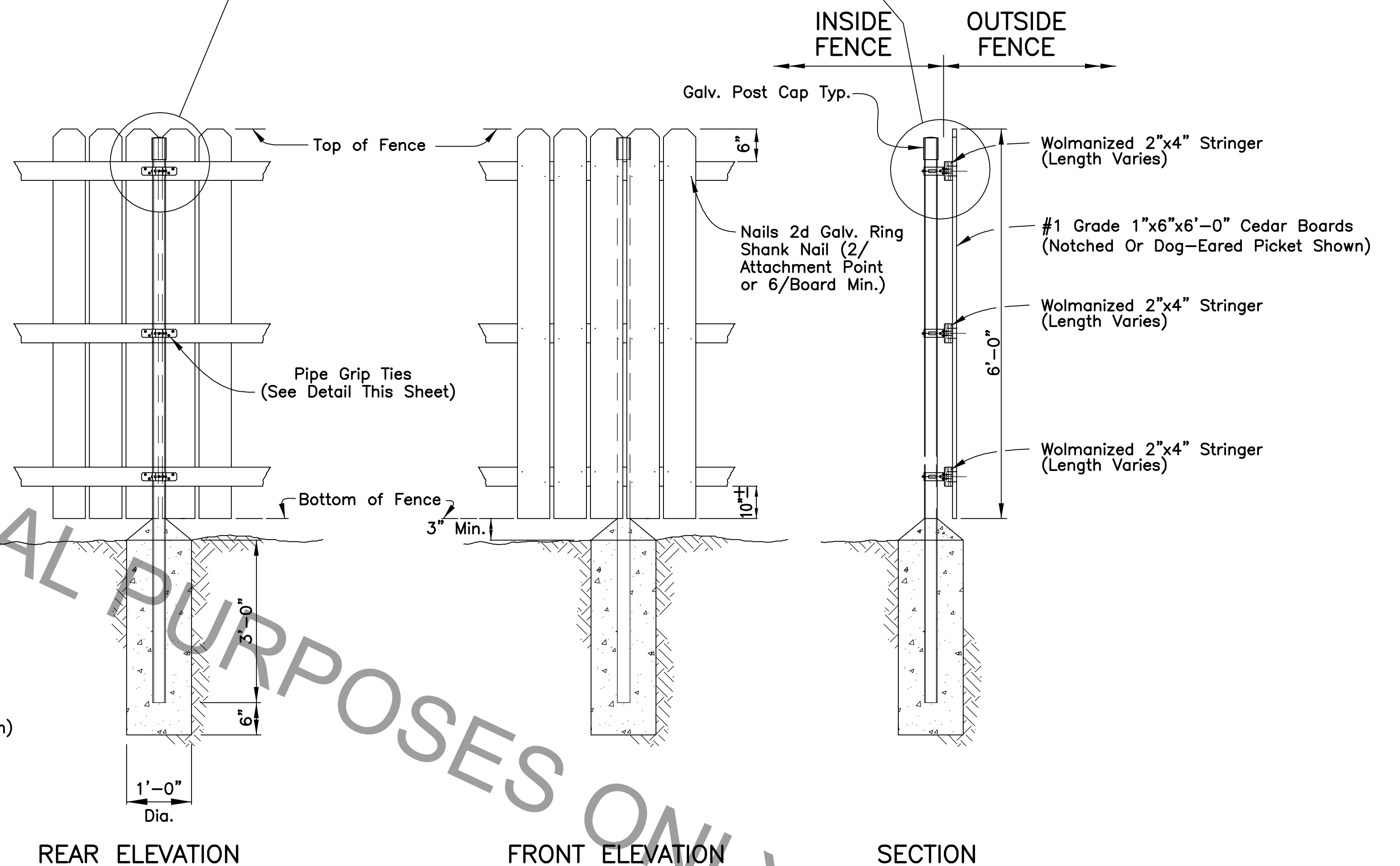
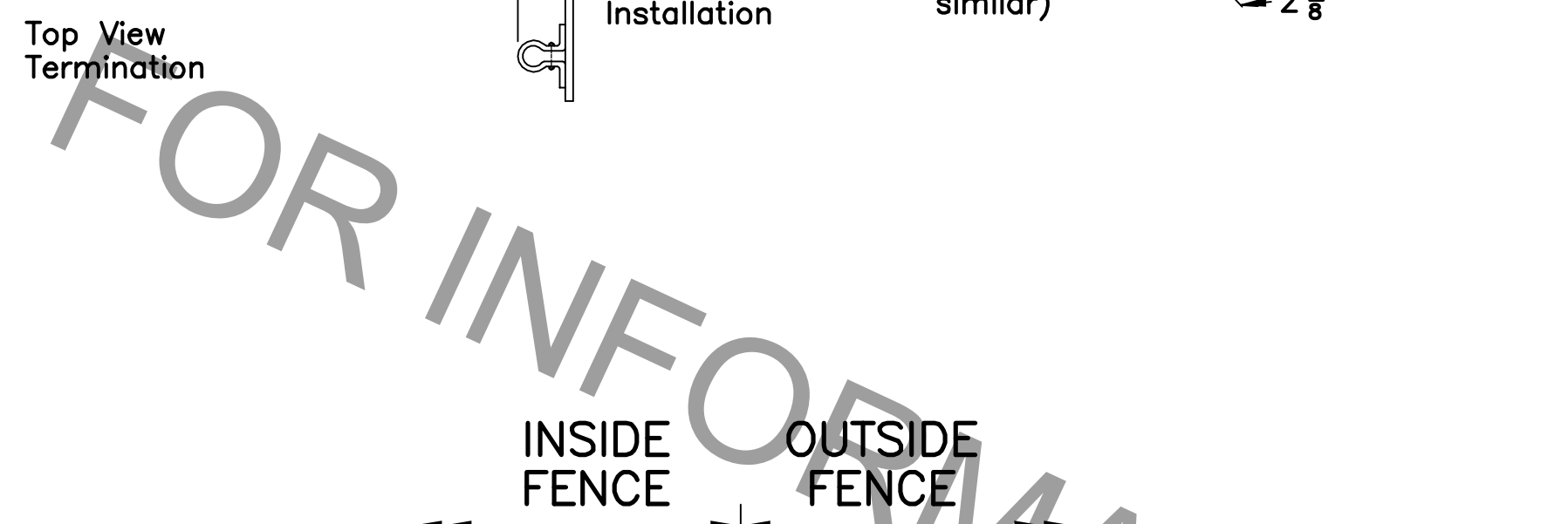
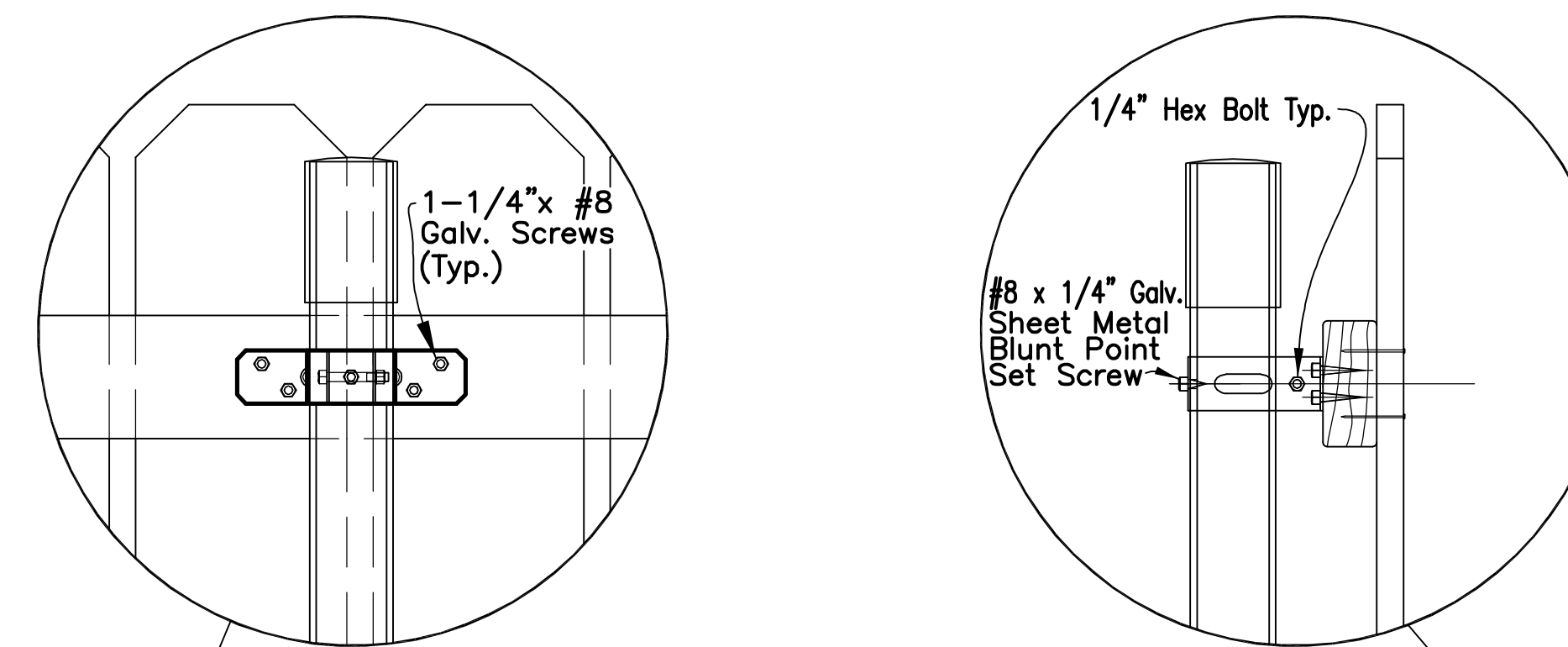
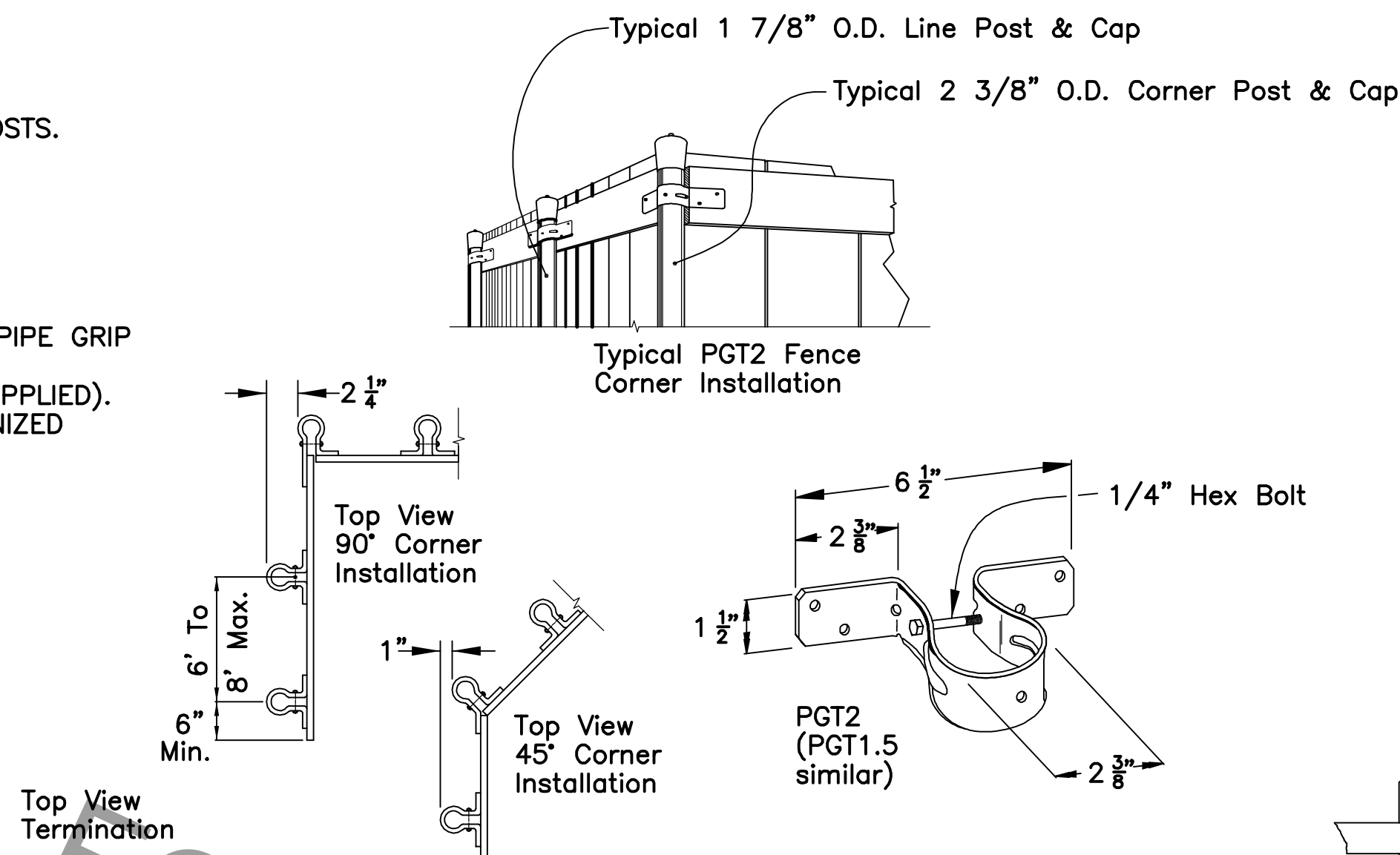
MATERIAL: 12 gauge  
FINISH: GALVANIZED  
INSTALLATION: USE ALL SPECIFIED FASTENERS. SEE GENERAL NOTES.

- INSTALL ON VERTICAL PIPES TO ALLOW FOR CORRECT RAIL ALIGNMENT.
  - USE 3 PIPE GRIP TIES PER PIPE FOR 6' FENCE HEIGHT AND 4 PIPE GRIP TIES PER PIPE FOR 8' FENCE HEIGHT; LINE UP TO STRINGLINE.
  - FASTEN PIPE GRIP TIES TO PIPE WITH 1/4" HEX HEAD BOLT (SUPPLIED).
  - PIPE GRIP TIE ATTACHES TO HORIZONTAL RAIL WITH FOUR GALVANIZED SCREWS AS SPECIFIED.
  - NAIL OR SCREW FENCE BOARDS TO RAILS USING GALVANIZED FASTENERS AS SPECIFIED.
  - 5/16" GALVANIZED CARRIAGE BOLTS WITH FLAT WASHERS AND NUTS MAY BE USED IN LIEU OF PIPE GRIP TIES.
- 6' HEIGHT: 3 PER POST REQUIRED FOR LINE POST; 6 PER POST REQUIRED FOR CORNER POST; FLAT WASHERS ALL SIDES).  
8' HEIGHT: 4 PER POST REQUIRED FOR LINE POST; 8 PER POST REQUIRED FOR CORNER POST; FLAT WASHERS ALL SIDES).



NOTCHED OR DOGEAR PICKET (STD. FENCE PICKET)

**TYPICAL FENCE PICKET DETAILS**



REAR ELEVATION

FRONT ELEVATION

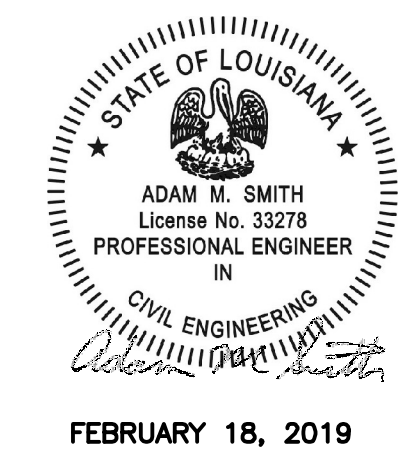
SECTION

**GENERAL NOTES:**

- ① Typical Installation may vary as shown on the Plans or as Directed by the Engineer. Location of Gates to be shown on Plans.
- ② Face Boards Towards Street, or Toward Building if on Edge of Canal, Unless Otherwise Directed By The Engineer.
- ③ Screw Pipe Grip Ties to Treated 2"x4" Horizontal Rails with Galvanized Fasteners (1-1/4" #8 Galvanized Round Slotted Head Wood Screws). (4/Board Minimum per Grip Tie)
- ④ Use 2" Galvanized Ring Shank Nails to Secure Fence Board to Horizontal Rails (6 per Board).
- ⑤ Line, Corner and Gate Posts shall be Galvanized Round Pipe per the following Schedule unless noted otherwise.  
1 7/8" O.D. = 2.71 lbs./L.F.; 1.900" O.D. Alt.\*  
2 3/8" O.D. = 3.65 lbs./L.F.; 2.375" O.D. Alt.\*  
2 7/8" O.D. = 5.80 lbs./L.F.; 2.875" O.D. Alt.\*  
4" O.D. = 9.12 lbs./L.F.; 4.000" O.D. Alt.\*  
\* Alternate Coating requirements for Round Sections— Sections may be externally coated with no less than 0.8 oz./ft. of high grade or special high grade plus zinc conforming to A.S.T.M. B6, followed by a chromate conversion coating of 30+10 micro-grams/in and an electrostatically applied thermo-plastic acrylic coating having a minimum dry film thickness of 0.3 mil. The internal surface shall be coated with a zinc rich coating of no less than 81% ZINC powder by weight, 0.3 mil. or greater in thickness.

PGT<sup>®</sup> PIPE GRIP TIES = U.S. PATENT NO. 5,297,890

DATE	DESCRIPTION REVISIONS	BY



STANDARD PLAN NO. 902-06	DATED February 14, 2019	SHEET NO. 1 OF 3
-----------------------------	----------------------------	---------------------

**PUMP STATION  
WOODEN FENCE DETAILS  
(6FT. OR 8FT. HEIGHT)**

ENGINEERING DIVISION DEPARTMENT OF PUBLIC WORKS CITY OF BATON ROUGE & PARISH OF EAST BATON ROUGE			
DESIGNED	DRAWN	CHECKED	APPROVED
J. CRAIN	S. CORTEZ	R. LAMBERT	A. SMITH