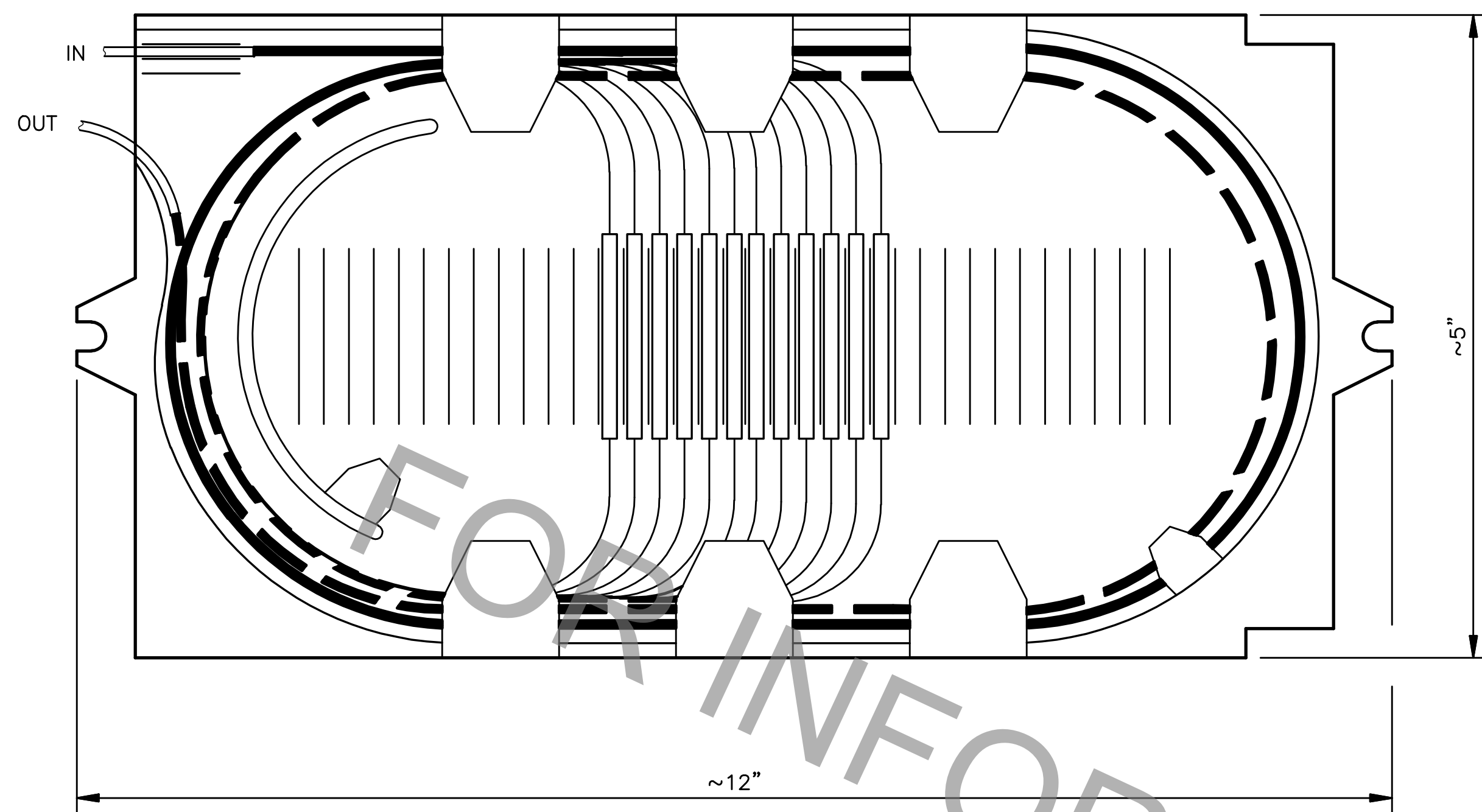
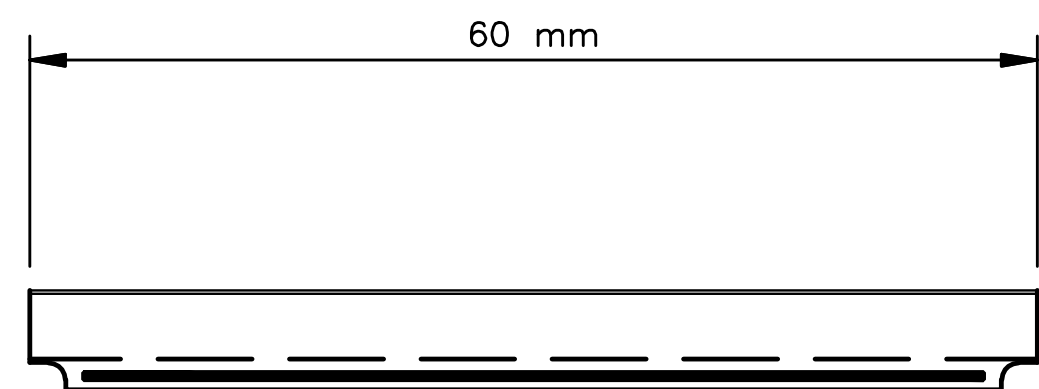


PROJECT NO.	SHEET



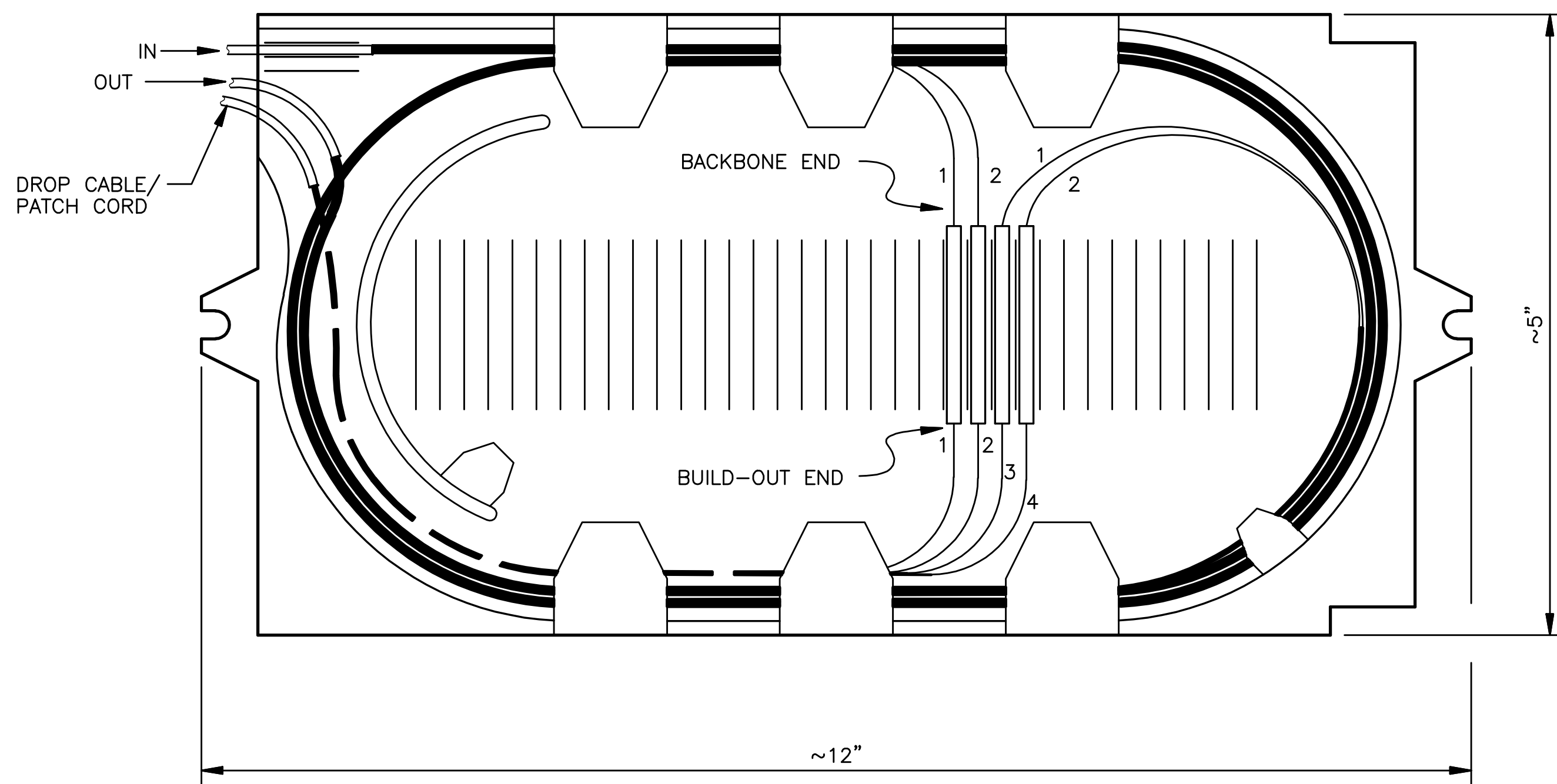
TYPICAL F/O STANDARD SPLICE TRAY – BUTT SPLICE
SCALE: N.T.S.

1. THE CONTRACTOR SHALL FOLLOW ALL MANUFACTURE'S INSTRUCTIONS AND PROCEDURES FOR THE CABLE AND SPLICE ENCLOSURE INSTALLATION.
2. ALL BUFFER TUBES SHALL BE CUT TO THE SAME LENGTH WITH THE PROPER STORAGE SLACK AND SECURED TO THE TRAY BY TIE WRAPS OR MANUFACTURE'S APPROVED EQUAL.
3. ALL FIBERS SHALL BE CUT TO FIT IN THE ASSIGNED SPLICE POSITION WITH THE PROPER AMOUNT OF SLACK.
4. ALL SPLICES SHALL HAVE HEAT SHRINK SPLICE PROTECTORS AND SHALL BE SECURED IN THE THE ASSIGNED HOLDER POSITION.
5. NO MORE THAN TWO BUFFER TUBES, 24 FIBERS, SHALL BE SPLICED IN ANY SPLICE TRAY RATED FOR 36 FIBERS OR LESS.



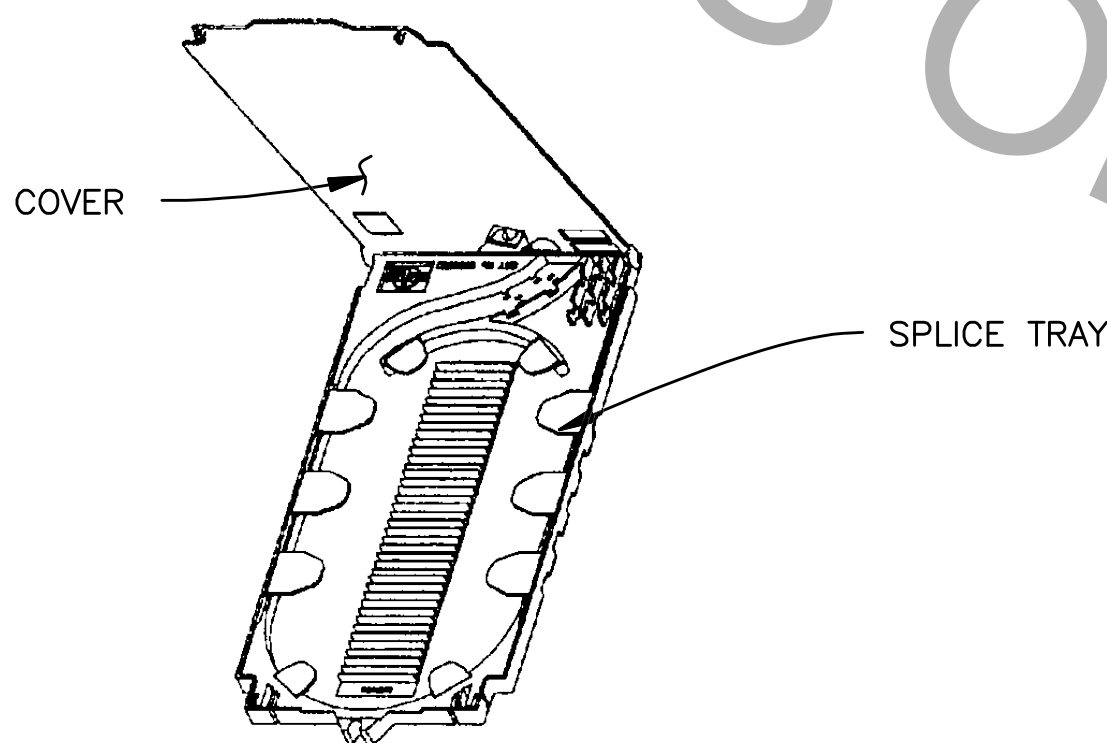
TYPICAL F/O HEAT SHRINK SPLICE PROTECTOR
SCALE: N.T.S.

1. ALL HEAT SHRINK SPLICE PROTECTORS SHALL BE TESTED TO BELLCORE (TELCORDIA) SPEC GR 1380 AND BE 60MM IN LENGTH.
2. ALL SPLICE PROTECTORS SHALL HAVE A CLEAR POLYLEFIN TUBE, AN INNER COPOLYMER DIELECTRIC SLEEVE AND A STAINLESS STEEL STRENGTH MEMBER.
3. THE SHRINK PROCESS MAY VARY IN TIME AND TEMPERTURE. THE DIAMETER OF THE COMPLETED SHRINK SLEEVE PROTECTOR SHALL BE 2.8MM.
4. ALL SPLICE PROTECTORS SHALL BE SECURED TO THE TRAY BY MEANS OF A NON-HARDENING SILICONE ADHESIVE APPLIED TO THE INSTALLED SPLICE IN THE SPLICE TRAY HOLDER.

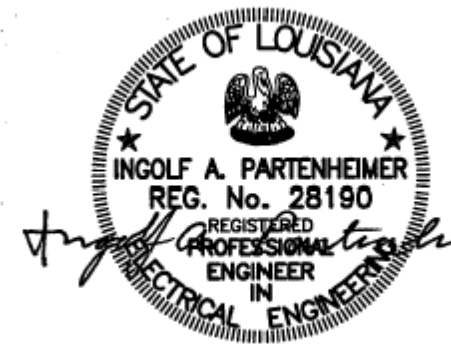


TYPICAL F/O STANDARD SPLICE TRAY – DROP CABLE/PATCH CORD (EXPRESS)
SCALE: N.T.S.

1. THE CONTRACTOR SHALL FOLLOW ALL MANUFACTURER'S INSTRUCTIONS AND PROCEDURES FOR THE CABLE AND SPLICE ENCLOSURE INSTALLATION.
2. ALL UNEXPRESSED BUFFER TUBES SHALL BE SECURED AND STORED INSIDE THE CLOSURE.
3. ALL EXPRESSED FIBERS SHALL HAVE HEAT SHRINK SPLICE PROTECTORS INSTALLED OVER THE SPLICE.
4. ALL EXPRESSED FIBERS SHALL BE CUT TO THE PROPER LENGTH AND SECURED IN THE ASSIGNED SPLICE HOLDER.
5. ALL EXPOSED NON-EXPRESSED FIBERS SHALL BE STORED PROPERLY INSIDE THE SPLICE TRAY TO ENSURE MAXIMUM PROTECTION FROM DAMAGE.
6. THE DROP CABLE AND/OR PATCH CORD SHALL BE PROPERLY SECURED INSIDE THE SPLICE TRAY WITH TIE WRAPS OR MANUFACTURER'S APPROVED EQUAL.
7. FIBER OPTIC CABLE SHALL BE INSTALLED IN ACCORDANCE WITH THE LATEST INSTITUTE OF ELECTRICAL AND ELECTRONICS ENGINEERS STANDARDS ASSOCIATION (IEEE-SA) REQUIREMENTS.



SPLICE TRAY KIT
SCALE: N.T.S.



FEBRUARY 27, 2008

STANDARD PLAN NO. 906-07	DATED FEBRUARY 26, 2008	SHEET NO. 1 OF 5
FIBER OPTIC SPLICE ENCLOSURE DETAIL		
ENGINEERING DIVISION DEPARTMENT OF PUBLIC WORKS CITY OF BATON ROUGE & PARISH OF EAST BATON ROUGE		
DESIGNED T.E.D.	DRAWN G. VANNICE	CHECKED J. TAYLOR
APPROVED I. PARTENHEIMER		