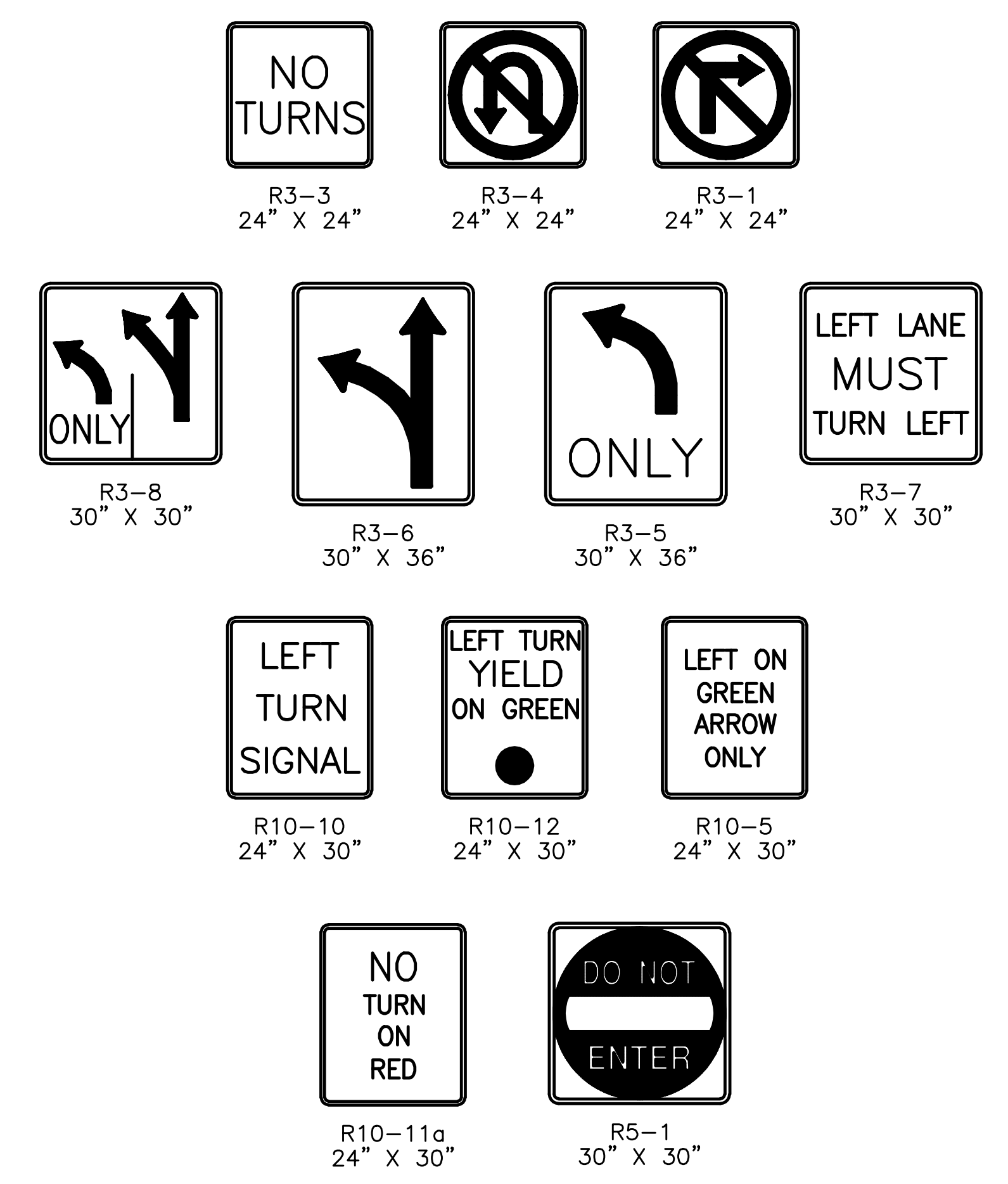
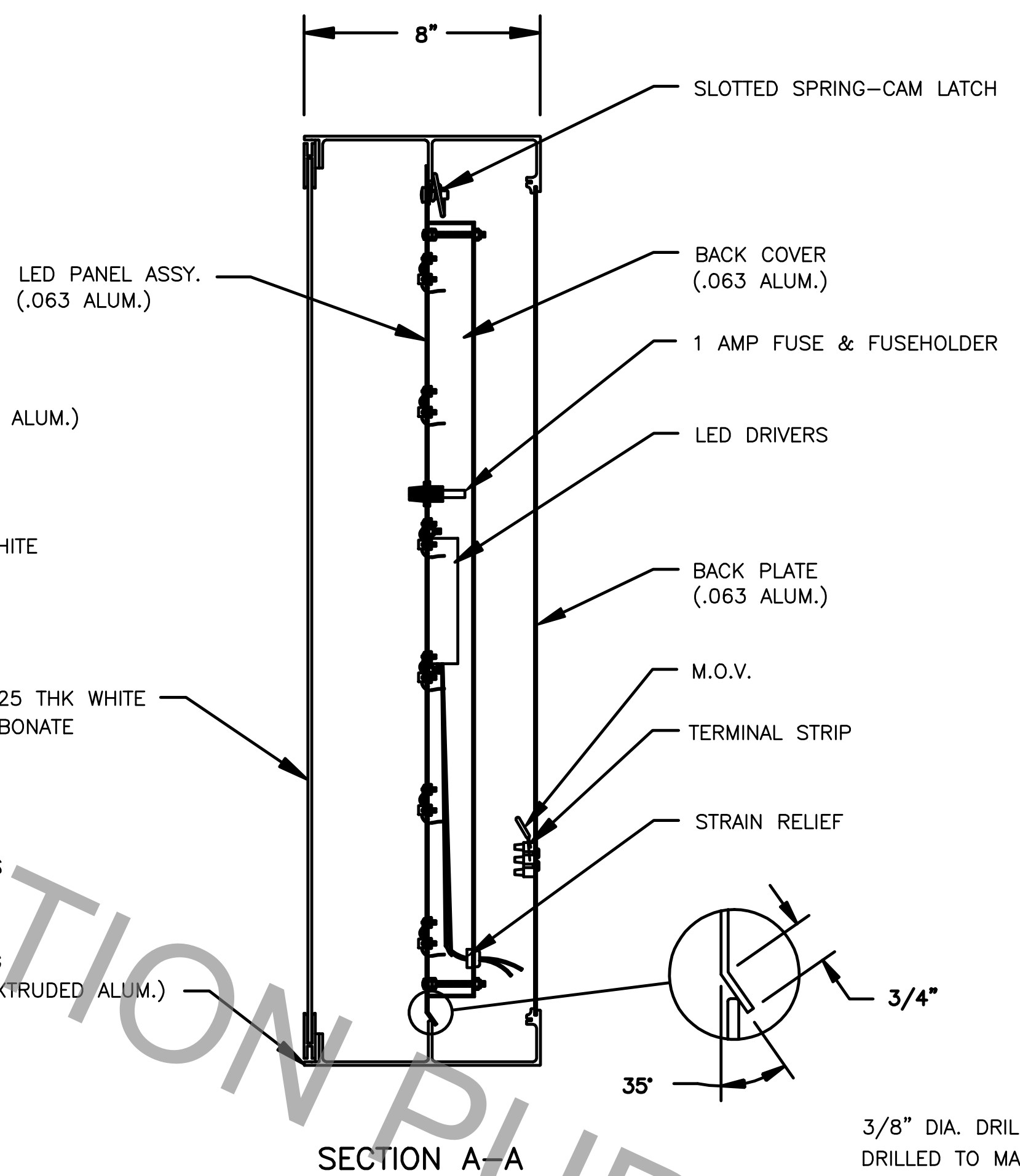
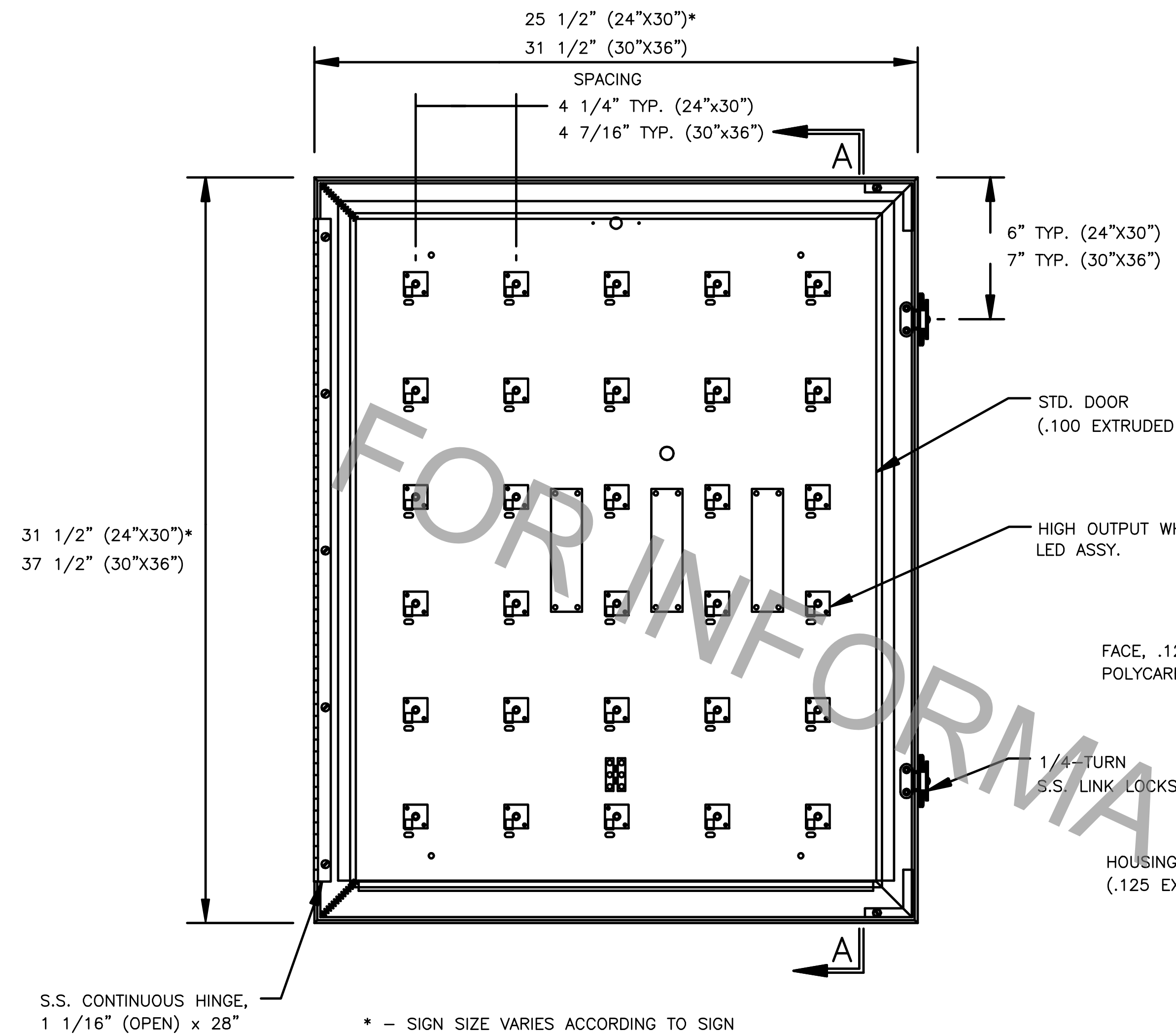


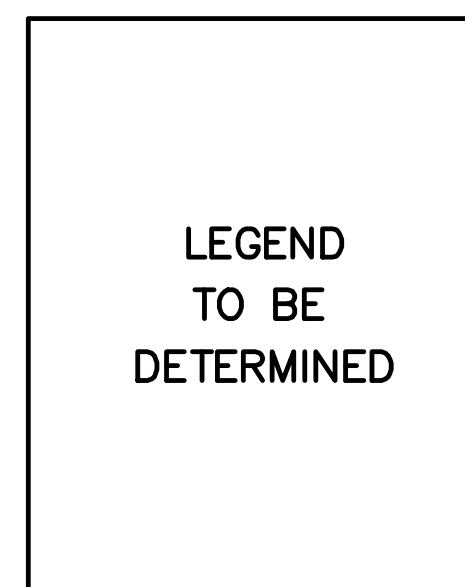
PROJECT NO.	SHEET



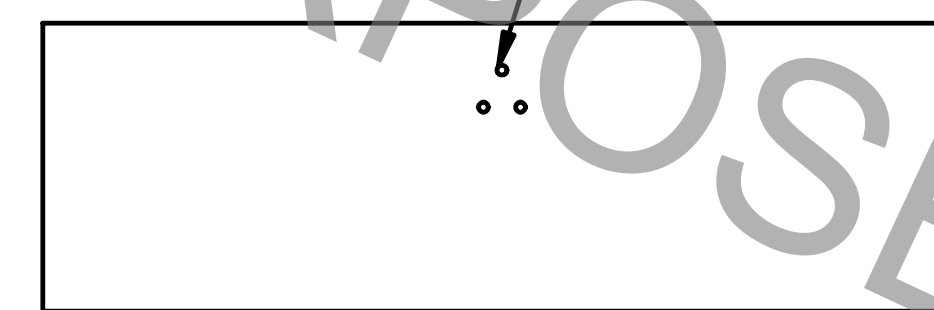
NOTES:

- FACE SHALL BE BACKLIT WITH POPULATED PANEL OF HIGH OUTPUT WHITE LED ASSYS.
- SIGN FACES SHALL BE VINYL GRAPHICS OVER .125" THK. POLYCARBONATE, LEGENDS SHALL COMFORM TO FHWA'S "STANDARD ALPHABETS FOR HIGHWAY SIGNS." FACE COLORS PER MUTCD STANDARDS.
- HINGE AND FASTENERS TO BE STAINLESS STEEL.
- SIGN SHALL BE FULLY GASKETED AND WATERTIGHT.
- SIGN SHALL BE EQUIPPED WITH FOUR DRAIN HOLES LOCATED IN THE LOWER CORNERS OF THE HOUSING.
- 1/2" DIA. POWER ENTRY HOLE PROVIDED THROUGH BOTTOM OF HOUSING.
- SIGN HOUSING COLORS:
INTERIOR OF HOUSING, BACK COVER, AND PANEL ASSY. - GLOSS WHITE ENAMEL FINISH.
AFTER MOUNTING LED COMPONENTS TO PANEL ASSY., COAT ENTIRE FRONT OF PANEL WITH 10 COATS OF CLEAR LAQUER.
EXTERIOR - SEMI-GLOSS BLACK ENAMEL FINISH.
- APPROXIMATE WEIGHT OF SIGN ASSY. - 50 LBS. (24"x30" SIGN), 65 LBS. (30"x36" SIGN)
- INTERIOR OF HOUSING SHALL BE PAINTED WHITE.
EXTERIOR HOUSING COLOR...(OPTIONAL)
- SIGN SHALL BE EQUIPPED WITH FOUR 1/8" DIA. DRAIN HOLES LOCATED IN THE LOWER CORNERS OF THE HOUSING.
- MOUNTING HUB SHOWN FOR THE SPAN WIRE MOUNT. OTHER MOUNTING METHODS AVAILABLE ON REQUEST.
- Internally Illuminated Signs. INTERNALLY ILLUMINATED SIGNS SHALL BE INSTALLED SUCH THAT THE BOTTOM OF THE SIGNS SHALL BE NOT LESS THAN SEVENTEEN (17) FEET ABOVE THE ROADWAY PAVEMENT CENTER LINE AND NO LESS THAN SIXTEEN (16) FEET ABOVE FINISHED GRADE JUST BEYOND THE SHOULDER, BIKE LANE OR MULT-USE LANE. LATERAL CLEARANCE BETWEEN SIGNS AND SIGNALS SHALL BE MAINTAINED IN ACCORDANCE WITH MUTCD.

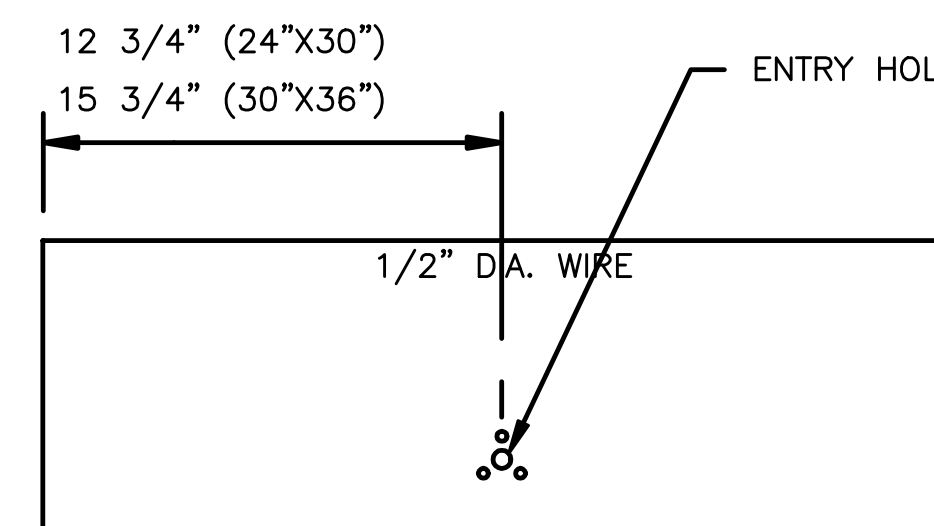
* - SIGN SIZE VARIES ACCORDING TO SIGN SPECIFIED.



TYPICAL LEGEND (NOT TO SCALE)



TOP VIEW (NOT TO SCALE)

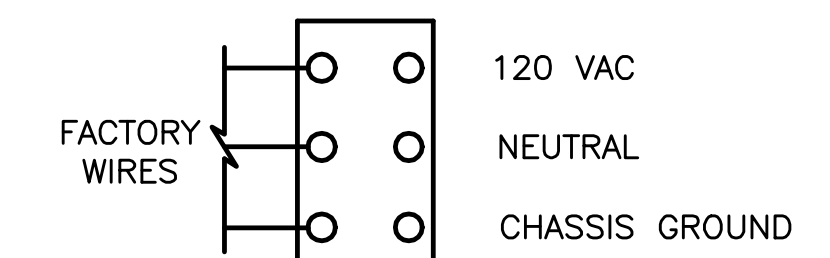


BOTTOM VIEW (NOT TO SCALE)

3/8" DIA. DRILL, 3 PLACES DRILLED TO MATCH PELCO TRI-STUD FOR MAST ARM MOUNT. PELCO BRACKET PROVIDED BY OTHERS.

NOTES:

SINGS NOT SHOWN SHALL BE SIZED PER THE LATEST EDITION OF THE MUTCD AND SHALL BE APPROVED BY CHIEF TRAFFIC ENGINEER.



TERMINAL STRIP CONNECTION



DECEMBER 2, 2008

STANDARD PLAN NO. 906-06	DATED DECEMBER 2, 2008	SHEET NO. 1 OF 2
-----------------------------	---------------------------	---------------------

INTERNALLY ILLUMINATED REGULATORY SIGN DETAILS

ENGINEERING DIVISION DEPARTMENT OF PUBLIC WORKS CITY OF BATON ROUGE & PARISH OF EAST BATON ROUGE			
DESIGNED T.E.D.	DRAWN G. VANNICE	CHECKED D. ROSENQUIST	APPROVED I. PARTENHEIMER

DATE	DESCRIPTION	BY
	REVISIONS	

INTERNALLY ILLUMINATED SIGN TYPICAL DESIGN