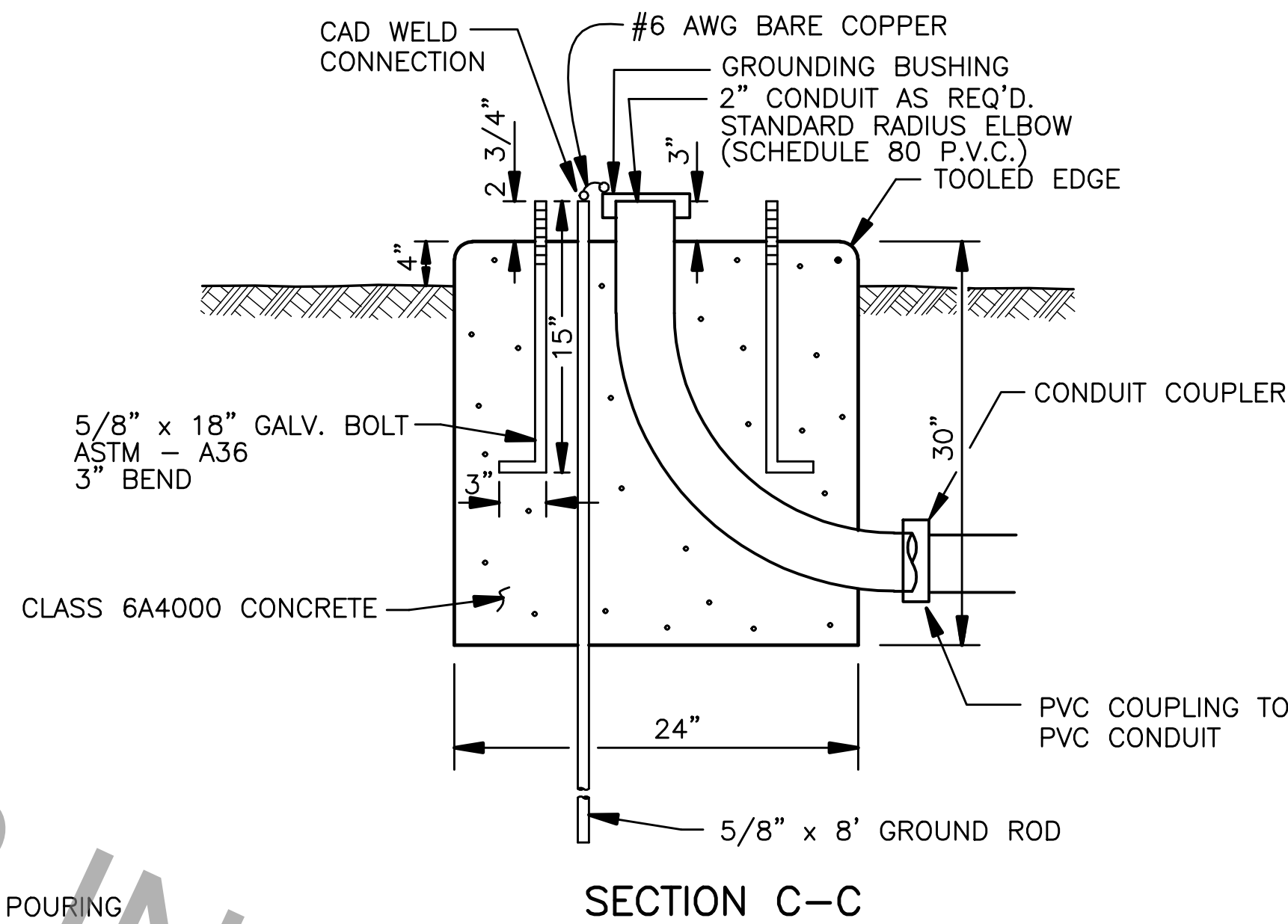
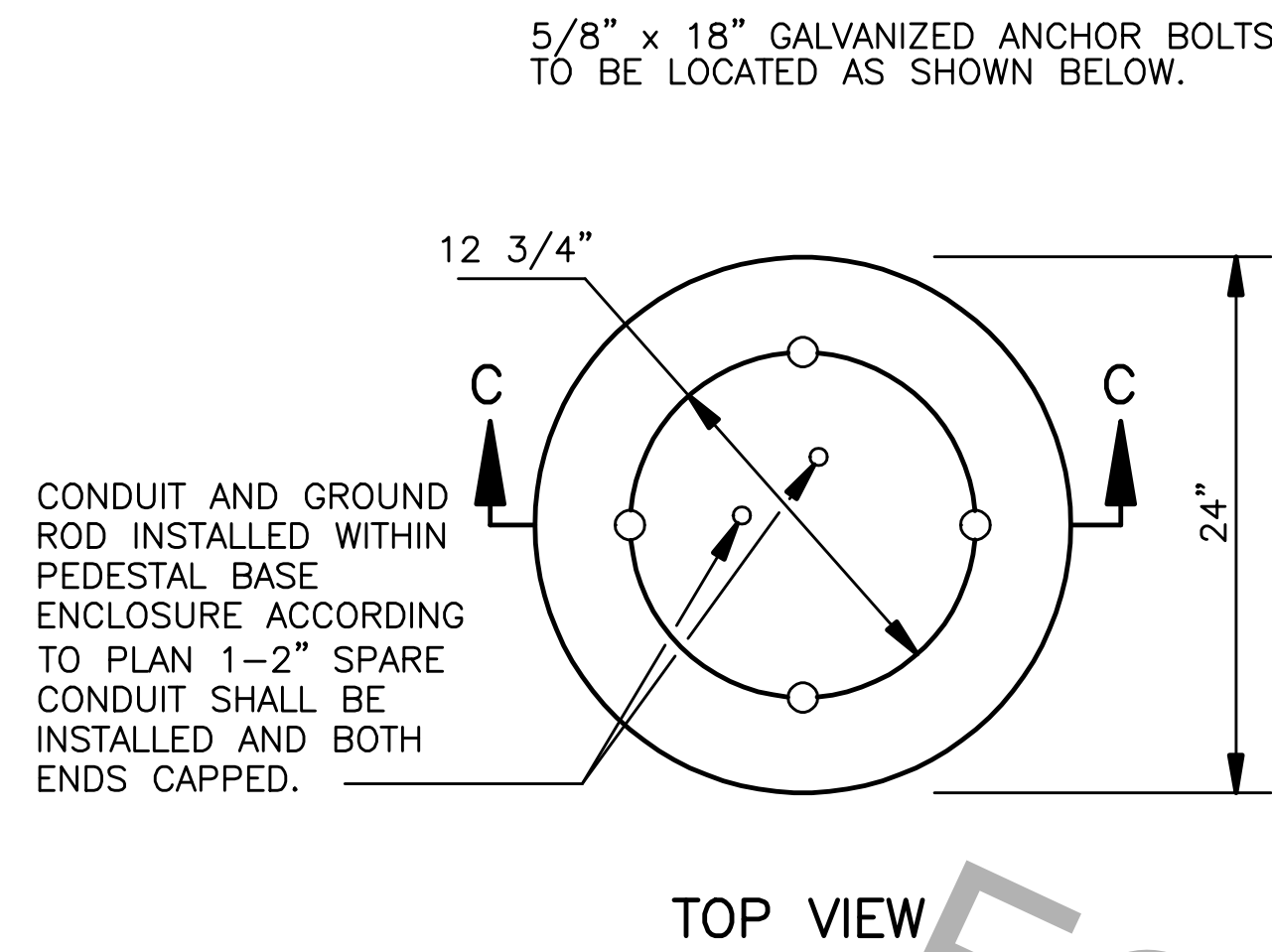


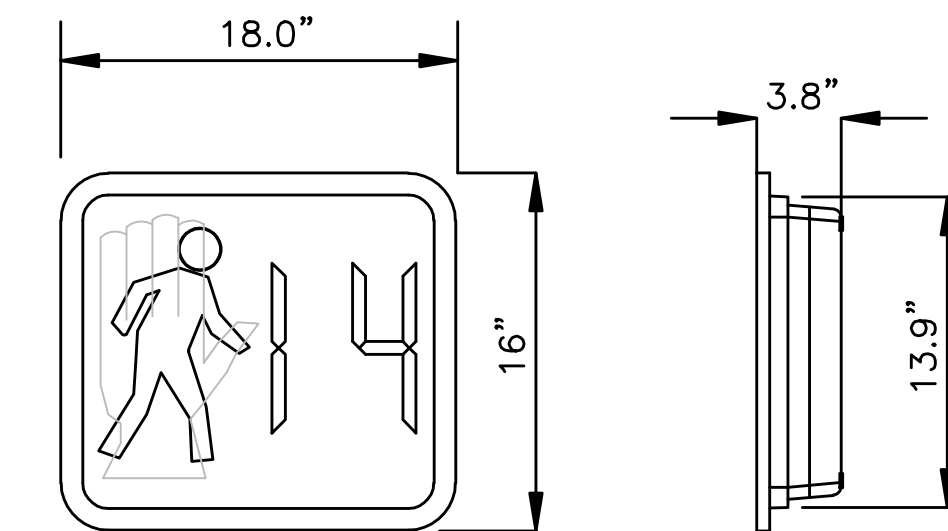
PROJECT NO.	SHEET



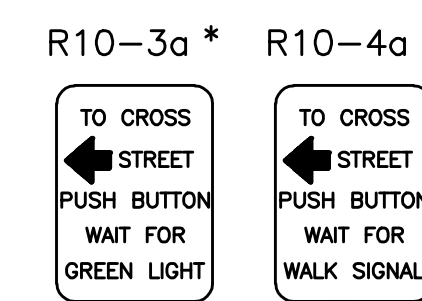
SIGNAL PEDESTAL FOUNDATION

NOTES:

1. FORMS MUST BE APPROVED BY THE PROJECT ENGINEER BEFORE POURING CONCRETE INTO ANY FOUNDATION FORM OR BEFORE COVERING ANY CONDUIT.
2. TRAFFIC SIGNAL ANCHOR BOLTS SHALL PROTRUDE 2" MIN. - 3" MAX. ABOVE FINISHED PEDESTAL FOUNDATION. CONDUIT AND GROUND RODS SHALL PROTRUDE 2" ABOVE FINISHED FOUNDATION.
3. BACKFILL OVER CONDUIT RUNS SHALL BE OF SOIL OR SAND AND SHALL NOT CONTAIN ROCKS OR CONCRETE.
4. ALL CONDUIT TO BE SCHEDULE 80 P.V.C.
5. ALL 90° ELS TO BE STANDARD RADIUS.



LED PEDESTRIAN COUNTDOWN SIGNALS



PEDESTRIAN PUSH BUTTON SWITCH

PEDESTRIAN SIGNAL (CITY)

* LEFT DIRECTIONAL SHOWN RIGHT DIRECTIONAL SIMILAR

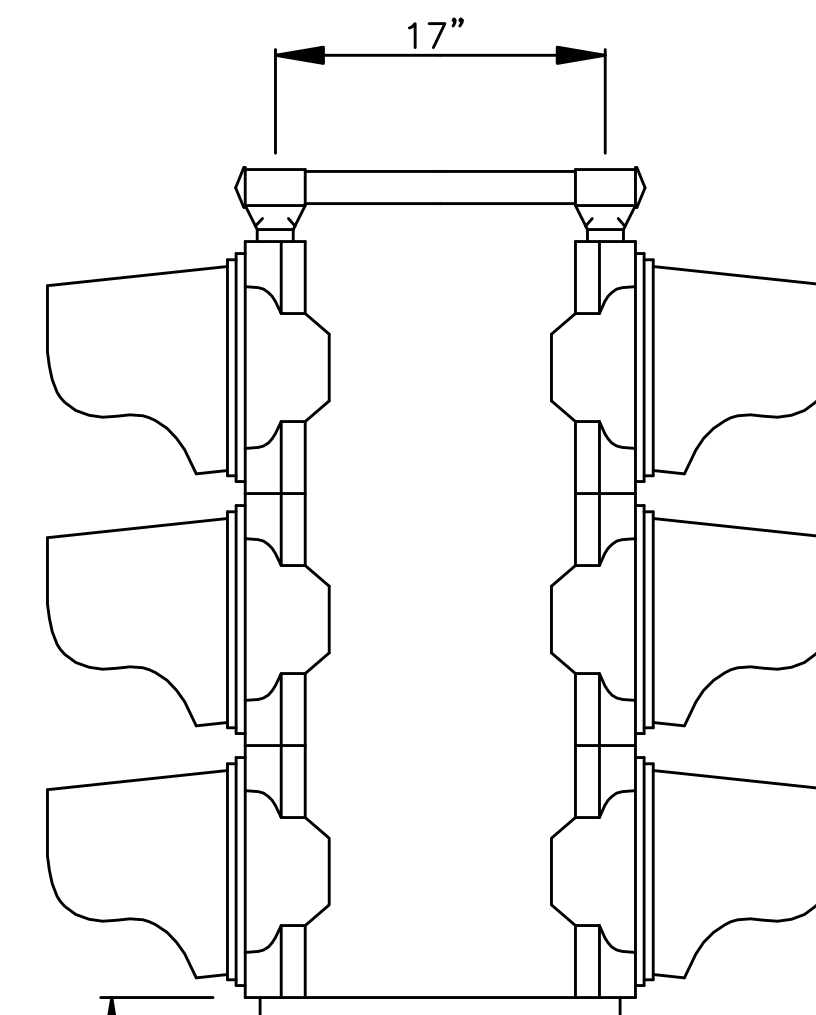
MAST ARM STANDARD, EXISTING WOOD POLE, OR PEDESTAL
 ATTACH TO METAL POLE WITH TWO (2) 1" STAINLESS STEEL SELF-TAPPING SCREWS.
 ATTACH TO WOOD POLE WITH 1" STAINLESS STEEL WOOD SCREWS.

APPROX. SIZE 9"X 12"

NOTE:
 ALL HARDWARE SHALL BE STAINLESS STEEL.

NOTES:

1. PEDESTRIAN PUSH BUTTONS SHALL BE FURNISHED AND INSTALLED WITH PEDESTRIAN SIGNALS AT INTERSECTIONS WITH VEHICLE ACTUATED CONTROLLERS. PUSH BUTTONS MAY ALSO BE REQUIRED AT OTHER INTERSECTIONS, AND THOSE SO REQUIRED ARE DESIGNATED ON INTERSECTION LAYOUT SHEETS.
2. THE CONTRACTOR SHALL FURNISH AND INSTALL A R10-3A OR R10-4A, LEFT OR RIGHT (AS APPROPRIATE) SIGN ABOVE EACH PEDESTRIAN PUSH BUTTON WITH NO DIRECT PAY.
3. PEDESTRIAN SIGNALS MAY BE PLACED EITHER ON TOP OR ON THE SIDE OF PEDESTAL.
4. CITY INTERSECTIONS WILL USE "ONE SECTION" PEDESTRIAN SIGNAL INDICATION.



TYPICAL BRACKET ASSEMBLY TWO-WAY HEAD. ALL BRACKET ASSEMBLIES SHALL HAVE TERMINAL COMPARTMENTS. SIMILAR BRACKETS AND HARDWARE SHALL BE USED FOR ONE-WAY, THREE-WAY OR FOUR-WAY.

PEDESTRIAN DETECTOR PEDESTAL ALTERNATIVE SHALL BE CAPPED. HEIGHT SHALL BE ADJUSTED FOR PEDESTRIAN SIGNAL INDICATION.

9' ABOVE PAVEMENT

POLE AND HARDWARE SHALL BE PLUMB.

PEDESTRIAN ACTUATED SIGNAL SIGN.

PEDESTRIAN PUSH BUTTON

4" DIAMETER ALUMINUM OR STEEL

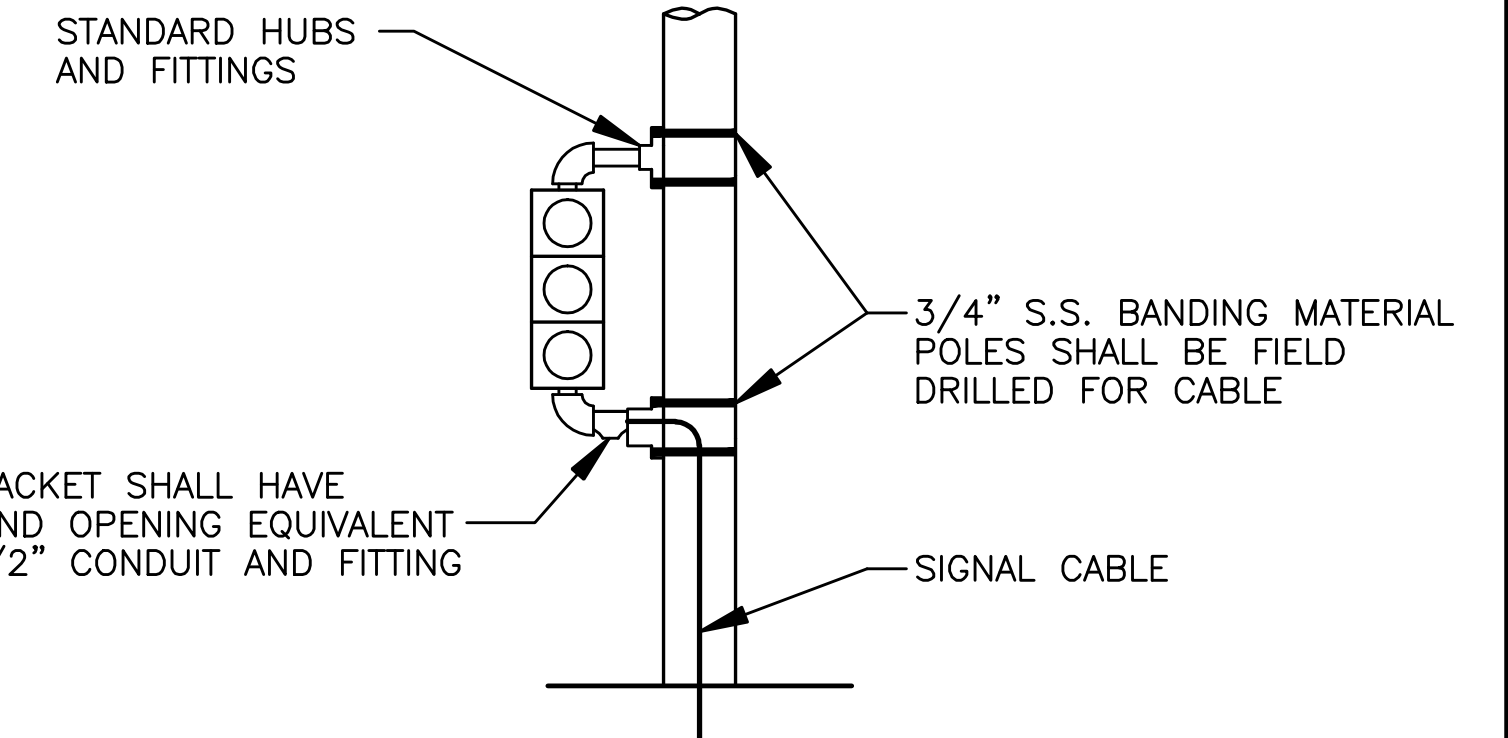
3'-6" MIN.
 4'-0" MAX.

DOOR COMPRISES TWO FACES OF BASE

NATURAL GROUND OR SIDEWALK

FOUNDATION SHALL BE LEVEL. SIGNAL POLE BASE SHALL BE MOUNTED DIRECTLY ONTO FOUNDATION WITH NO SHIMS.

PEDESTAL MOUNTED SIGNAL INSTALLATION AND/OR PEDESTRIAN DETECTOR PEDESTAL

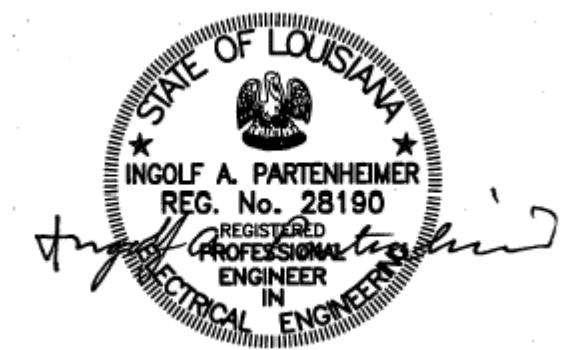


POLE MOUNTED SIGNAL HEADS

*NOTE: FOR WOOD POLES USE STANDARD HUBS AND FITTINGS FASTENED WITH 3/8" HDG LAG SCREWS AND Banded WITH 3/4" STAINLESS STEEL BANDING MATERIAL.

HORIZONTAL ALIGNMENT EACH SIGNAL HEAD SHALL BE AIMED WITHIN A MAXIMUM OF 3 DEGREES OF BEING PARALLEL TO THE APPROACH LANE TO WHICH IT APPLIES, UNLESS OTHERWISE DIRECTED BY THE PROJECT ENGINEER.

TWO-WAY, THREE-WAY SIGNAL HEADS AND PEDESTRIAN HEADS SHALL BE SIMILARLY MOUNTED WITH APPROPRIATE HARDWARE. CLEARANCE FROM BOTTOM OF SIGNAL HEAD TO PAVEMENT OR NATURAL GROUND SHALL BE 9' OR SHALL CONFORM TO THE MANUAL ON UNIFORM TRAFFIC DEVICES, CURRENT EDITION.



FEBRUARY 27, 2008

STANDARD PLAN NO. 906-01	DATED FEBRUARY 26, 2008	SHEET NO. 2 OF 6
-----------------------------	----------------------------	---------------------

PEDESTAL POLE DETAILS

ENGINEERING DIVISION DEPARTMENT OF PUBLIC WORKS CITY OF BATON ROUGE & PARISH OF EAST BATON ROUGE			
DESIGNED T.E.D.	DRAWN G. VANNICE	CHECKED D. ROSENQUIST	APPROVED I. PARTENHEIMER

DATE	DESCRIPTION REVISIONS	BY