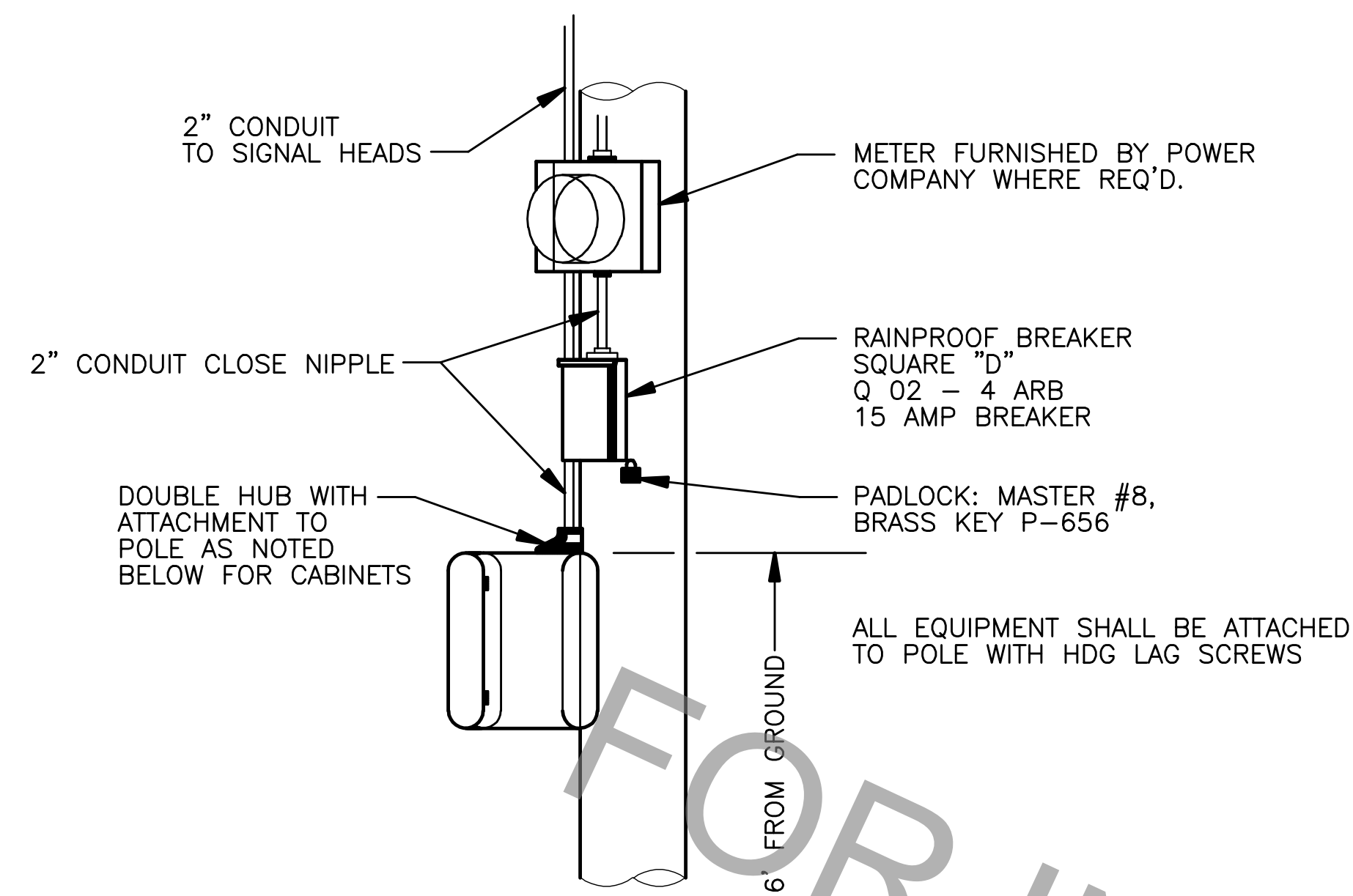


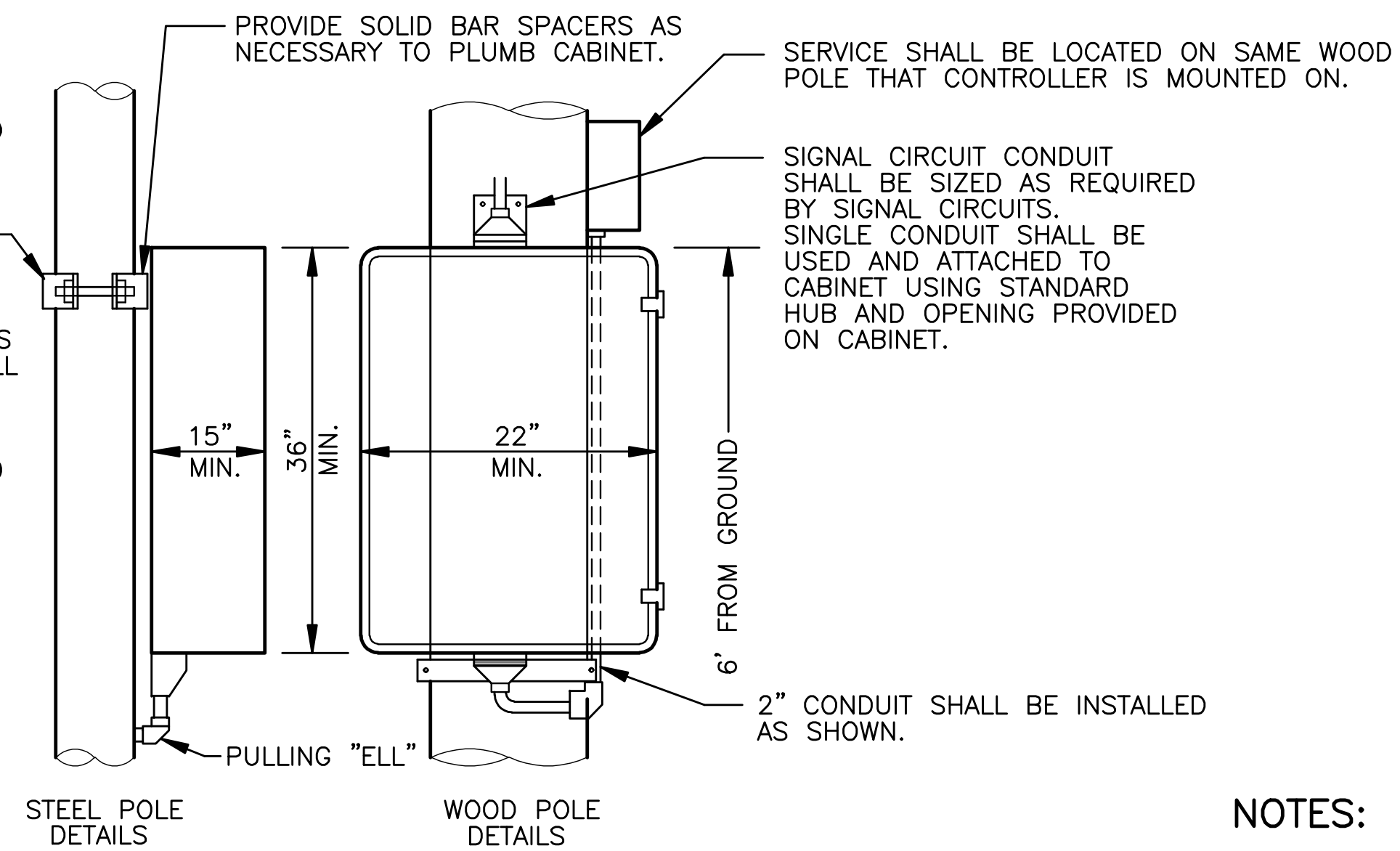
| | |
|-------------|-------|
| PROJECT NO. | SHEET |
| | |



POLE MOUNTED FLASHER CONTROLLER
(6 1/2" x 12" x 16")

NOTES: USED FOR FLASHING HAZARD BEACONS AND CONTINUOUS FLASHING SIGNS. THIS ITEM SHALL BE INCLUSIVE WITH ELECTRICAL SERVICE
FLASHER CONTROL CABINET TO BE PAINTED YELLOW

POLE CLAMP SHALL BE SIZED TO FIT POLE AND SHALL BE ATTACHED TO BACK OF CABINET WITHOUT INTERFERING WITH CABINET PANELS.
WIRE ENTRY INTO CABINET FROM STEEL POLE SHALL BE THROUGH BOSSES PROVIDED ON POLE. PULLING ELLS SHALL BE USED FOR SIGNAL CIRCUIT AND SERVICE CONDUIT. HUB ATTACHMENT ON BOTTOM OF CABINET SHALL BE USED FOR SIGNAL CIRCUIT CONDUIT. STANDARD TYPE CONTROLLER CABINET HUB SHALL BE INSTALLED ON CABINET FOR SERVICE ENTRANCE.
ALL SERVICE DISCONNECTS SHALL BE LOCATED ON CLOSEST WOOD POLE AVAILABLE FOR SERVICE.



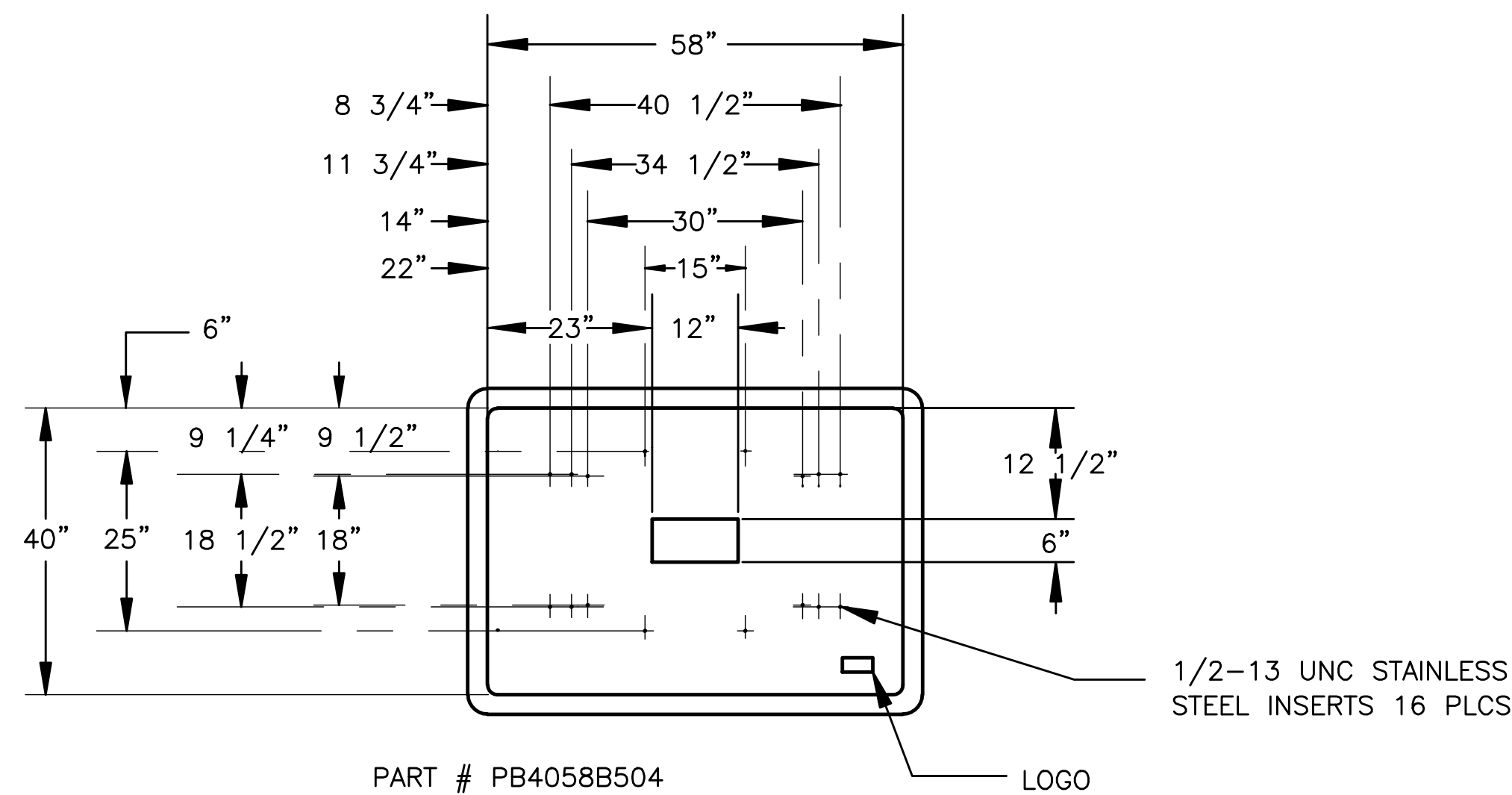
POLE MOUNTED CONTROLLER CABINET

NOTES: TOP AND BOTTOM OF CABINET SHALL BE ATTACHED TO WOOD POLES USING BRACKETS MOUNTED WITH CONDUIT HUBS, STANDARD BRACKET; AND ATTACHED TO POLE WITH 1/2" x 4" HDG LAG SCREWS.

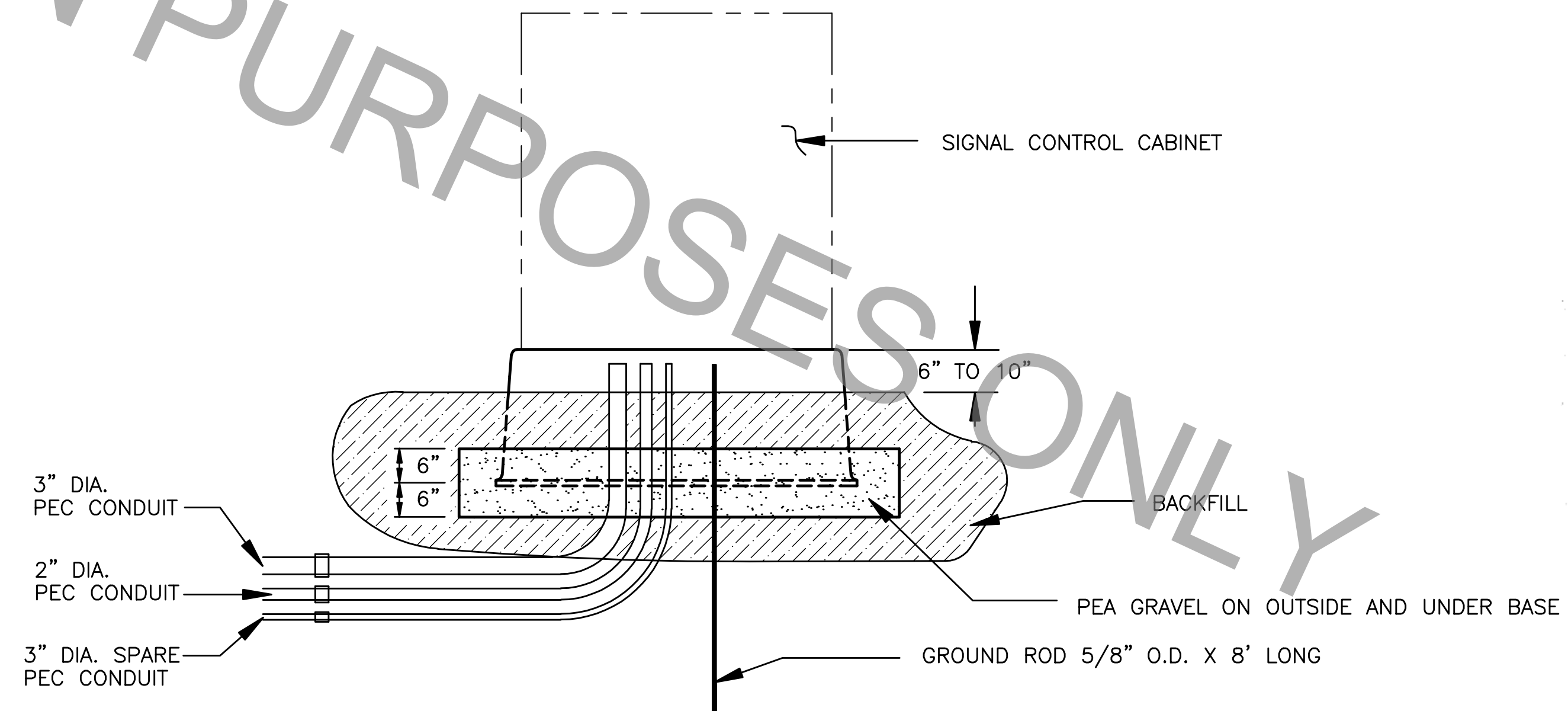
CONDUIT FOR SIGNAL CIRCUIT SHALL BE SIZED FOR SIGNAL CIRCUITS, MIN. 2", MAX. 3"

NOTES:

- ACCESS. ACCESS TO CONTROLLER CABINET AND ASSOCIATED SIGNAL EQUIPMENT MUST BE AVAILABLE AT ALL TIMES. SPACE MUST BE PROVIDED FOR DOOR SWING. A CONCRETE 3' X 5' X 4" DRY PAD SHALL BE PROVIDED FOR SIGNAL TECHNICIAN. ANY FENCES, EQUIPMENT AND MATERIAL STORAGE IN THE AREA SHALL NOT BLOCK ACCESS TO SIGNAL EQUIPMENT.
- LOCATION. THE PROJECT ENGINEER PRIOR TO INSTALLATION SHALL APPROVE THE LOCATION OF EACH CONTROLLER CABINET. THE BACK OF THE CONTROLLER CABINET SHALL FACE TOWARD THE CENTER OF INTERSECTION AS DIRECTED BY THE PROJECT ENGINEER.



CONTROLLER CABINET BASE



TYPICAL INSTALLATION UNDER BASE



FEBRUARY 27, 2008

| | | |
|-----------------------------|----------------------------|---------------------|
| STANDARD PLAN NO. 906-01 | DATED FEBRUARY 26, 2008 | SHEET NO. 3 OF 6 |
|-----------------------------|----------------------------|---------------------|

CONTROLLER DETAILS

| | | | |
|--|---------------------|--------------------------|-----------------------------|
| ENGINEERING DIVISION DEPARTMENT OF PUBLIC WORKS CITY OF BATON ROUGE & PARISH OF EAST BATON ROUGE | | | |
| DESIGNED T.E.D. | DRAWN G. VANNICE | CHECKED D. ROSENQUIST | APPROVED I. PARTENHEIMER |

| DATE | DESCRIPTION REVISIONS | BY |
|------|--------------------------|----|
| | | |
| | | |