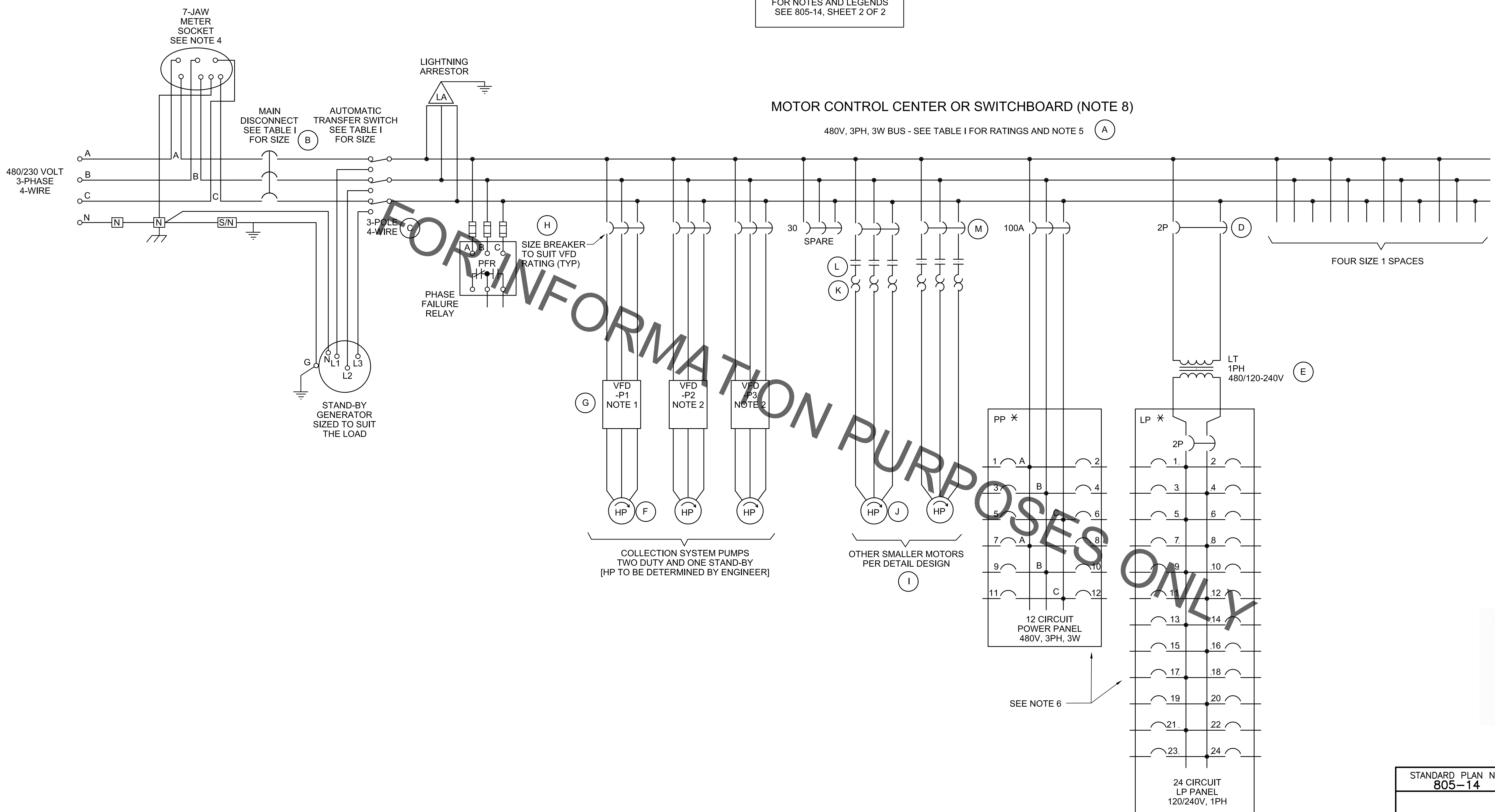


PROJECT NO.	SHEET

FOR NOTES AND LEGENDS
SEE 805-14, SHEET 2 OF 2



STANDARD PLAN NO. 805-14	DATED AUGUST 1, 2011	SHEET NO. 1 OF 2
-----------------------------	-------------------------	---------------------

ELECTRICAL THREE LINE DIAGRAM
(TYPE II PUMP STATION)

ENGINEERING DIVISION DEPARTMENT OF PUBLIC WORKS CITY OF BATON ROUGE & PARISH OF EAST BATON ROUGE			
DESIGNED A. SCHULZE	DRAWN G. VANNICE	CHECKED R. WRIGHT	APPROVED B. HARMON

DATE	DESCRIPTION REVISIONS	BY
4/13	MISC. REVISIONS	A.S.