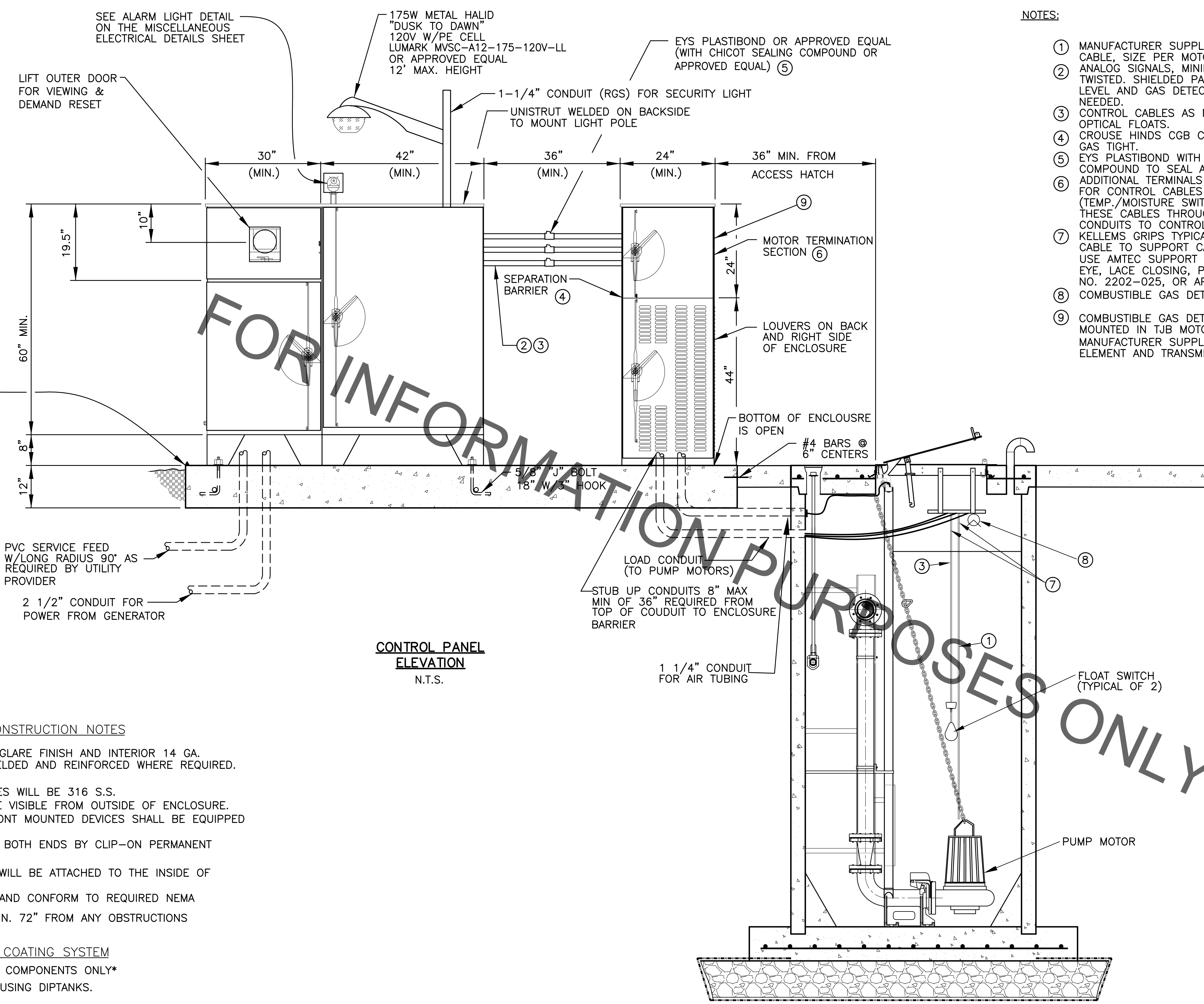
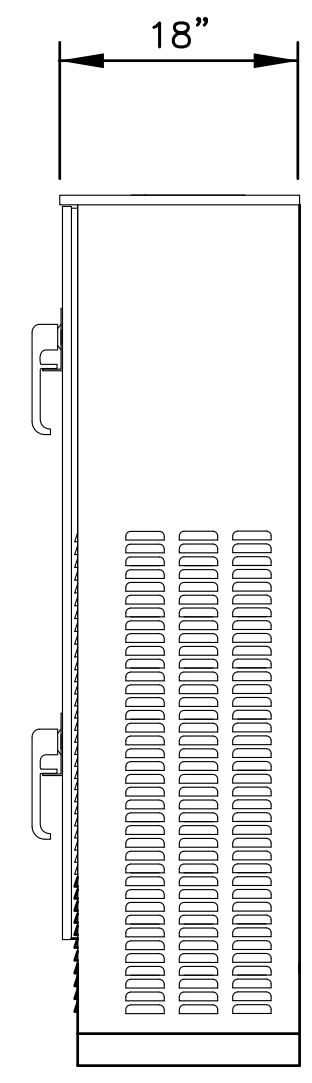


PROJECT NO.	SHEET



NOTES:

- ① MANUFACTURER SUPPLIED MOTOR CABLE, SIZE PER MOTOR HP.
- ② ANALOG SIGNALS, MINIMUM TWO TWISTED, SHIELDED PAIRS FOR LEVEL AND GAS DETECTION - AS NEEDED.
- ③ CONTROL CABLES AS NEEDED FOR OPTICAL FLOATS.
- ④ CROUSE HINDS CGB CABLE FITTING GAS TIGHT.
- ⑤ EYS PLASTIBOND WITH SEALING COMPOUND TO SEAL AIR GAP.
- ⑥ ADDITIONAL TERMINALS AS NEEDED FOR CONTROL CABLES (TEMP./MOISTURE SWITCHES). RUN THESE CABLES THROUGH CONTROL CONDUITS TO CONTROL PANEL.
- ⑦ KELLEMS GRIPS TYPICAL EACH CABLE TO SUPPORT CABLE WEIGHT. USE AMTEC SUPPORT GRIPS OFFSET EYE, LACE CLOSING, PART NO. 2202-025, OR APPROVED EQUAL.
- ⑧ COMBUSTIBLE GAS DETECTOR ELEMENT.
- ⑨ COMBUSTIBLE GAS DETECTOR TRANSMITTER MOUNTED IN TJB MOTOR TERMINATION SECTION. MANUFACTURER SUPPLIED CABLE BETWEEN GAS ELEMENT AND TRANSMITTER.



TERMINATION PANEL  
SIDE VIEW  
N.T.S.

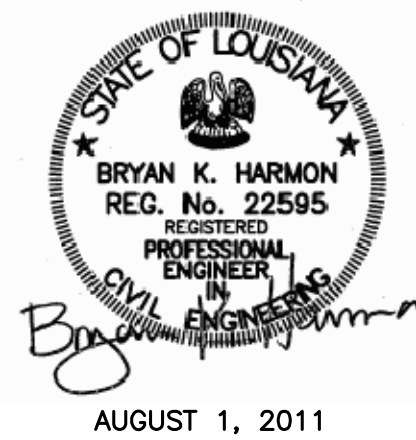
CONTROL PANEL  
ELEVATION  
N.T.S.

ENCLOSURE CONSTRUCTION NOTES

1. EXTERIOR 12 GA. 316 S.S. WITH NO-GLARE FINISH AND INTERIOR 14 GA. COLD ROLLED STEEL ELECTRICALLY WELDED AND REINFORCED WHERE REQUIRED.
2. CONSTRUCTION WILL BE NEMA 4X.
3. ALL NUTS, BOLTS, SCREWS AND HINGES WILL BE 316 S.S.
4. NUTS, BOLTS & SCREWS WILL NOT BE VISIBLE FROM OUTSIDE OF ENCLOSURE.
5. ALL CIRCUIT BREAKERS AND DEAD FRONT MOUNTED DEVICES SHALL BE EQUIPPED WITH PHENOLIC NAMEPLATES.
6. CONTROL WIRING WILL BE MARKED AT BOTH ENDS BY CLIP-ON PERMANENT PLASTIC WIRE MARKERS.
7. A PLASTIC COVERED WIRING DIAGRAM WILL BE ATTACHED TO THE INSIDE OF THE FRONT DOOR.
8. ENCLOSURE WILL BE FACTORY WIRED AND CONFORM TO REQUIRED NEMA
9. CONTROL PANEL SHALL BE PLACED MIN. 72" FROM ANY OBSTRUCTIONS OR OPENINGS.

POLY-PORC COATING SYSTEM  
\*PAINT INTERIOR COMPONENTS ONLY\*

- FIVE STAGES OF METAL PREPARATION USING DIPTANKS.
1. ALKALINE CLEANER 160°F.
  2. CLEAR WATER RINSE.
  3. IRON PHOSPHATE APPLICATION 150°F.
  4. CLEAR WATER RINSE.
  5. INHIBITIVE RINSE TO SEAL PHOSPHATED SURFACES 120°F
  6. FINISH SHALL BE POLYESTER DRY POWDER, ELECTROSTATICALLY APPLIED AND BAKED ON AT 380°F.



STANDARD PLAN NO. 805-07	DATED AUGUST 1, 2011	SHEET NO. 2 OF 2
-----------------------------	-------------------------	---------------------

PEDESTAL MOUNT  
CONTROL PANEL DETAILS  
(TYPE I STATION)

ENGINEERING DIVISION DEPARTMENT OF PUBLIC WORKS CITY OF BATON ROUGE & PARISH OF EAST BATON ROUGE			
DESIGNED A. SCHULZE	DRAWN G. VANNICE	CHECKED R. WRIGHT	APPROVED B. HARMON

4-13	REVISED GENERAL NOTES AND ADDED BUBBLE NUMBERS TO DRAWING	A.S.
DATE	DESCRIPTION	BY
	REVISIONS	