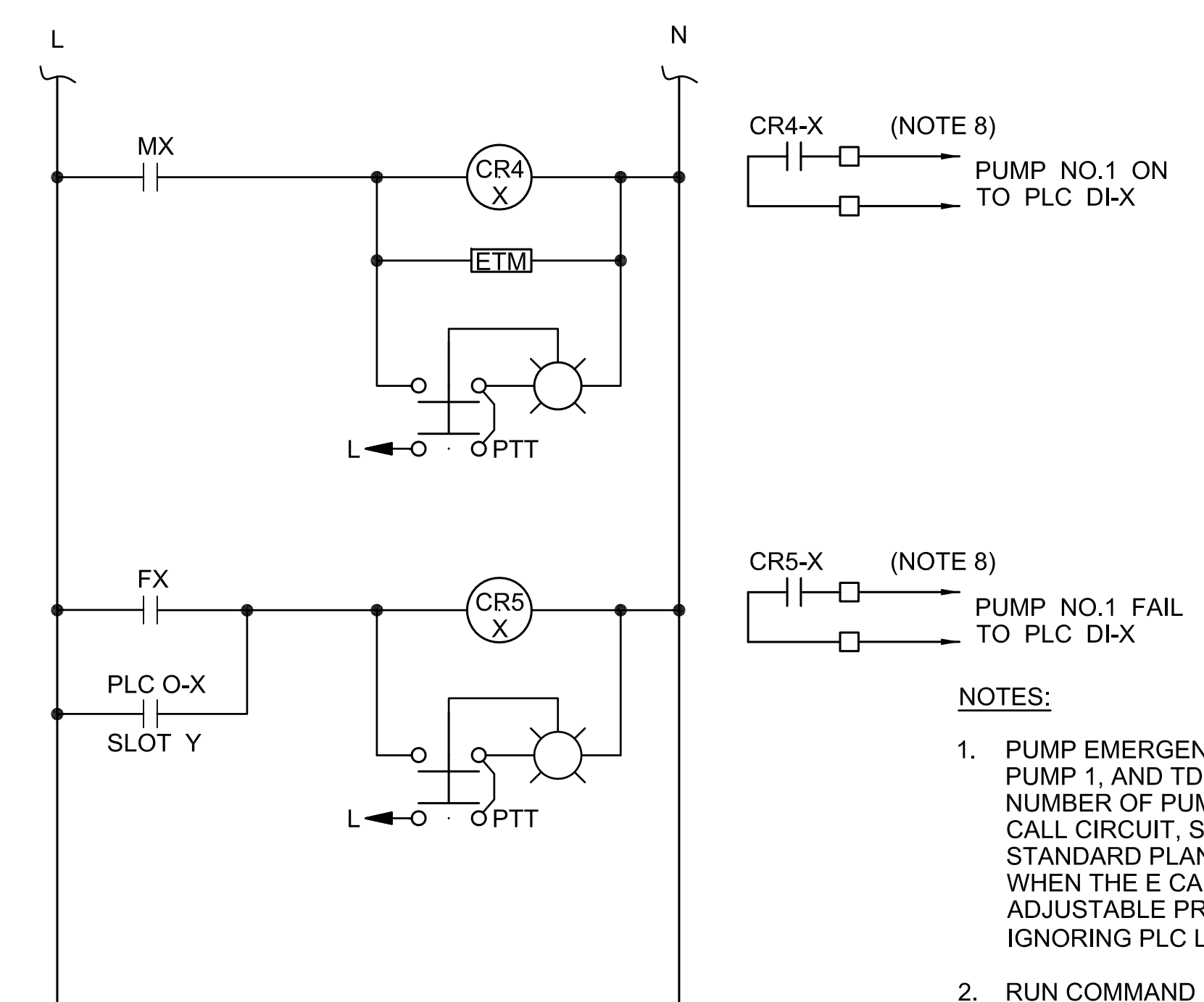
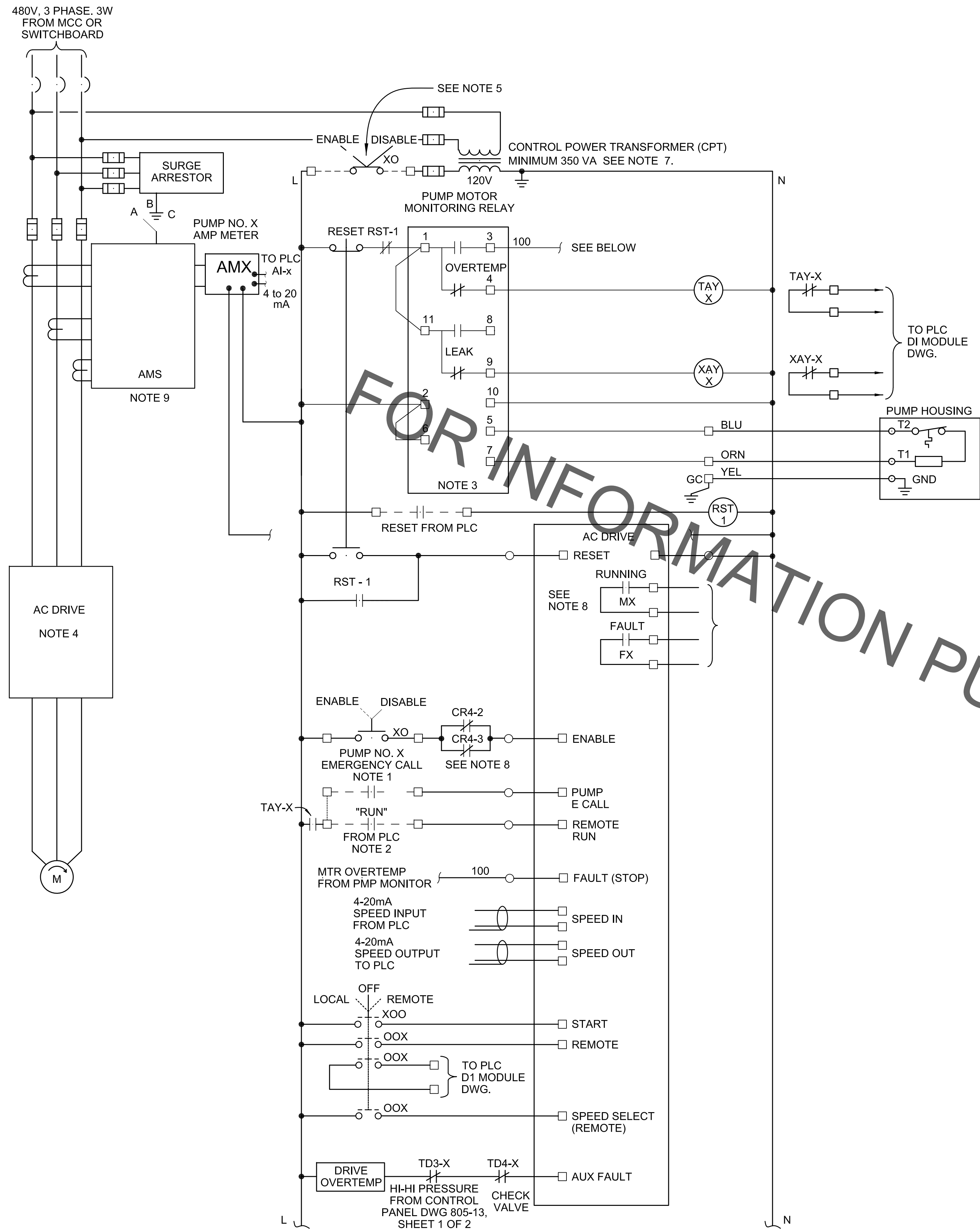
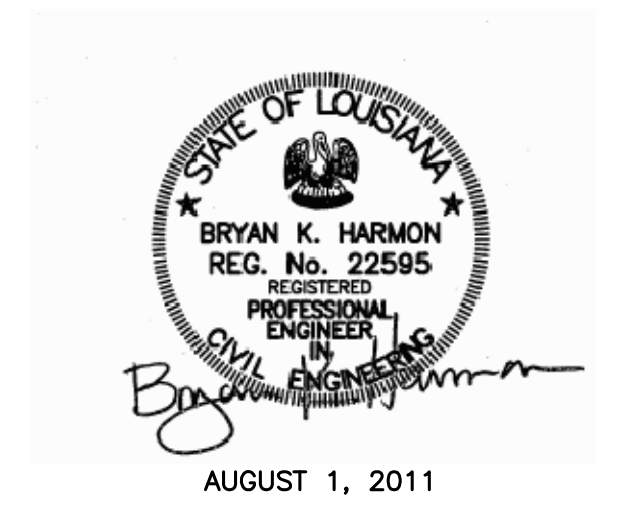


PROJECT NO.	SHEET



- NOTES:**
1. PUMP EMERGENCY CALL CONTACT COMES FROM RELAY CR6 FOR PUMP 1, AND TD1-X FOR PUMP #X, X = 1 THRU 3 DEPENDING ON NUMBER OF PUMPS IN A PUMP STATION. SEE PUMP EMERGENCY CALL CIRCUIT, STANDARD PLAN 805-08 FOR TYPE I STATIONS AND STANDARD PLAN DWG 805-13, SHEET 2 OF 2 FOR TYPE II STATIONS. WHEN THE E CALL CONTACT IS CLOSED, THE DRIVE STARTS AT AN ADJUSTABLE PRESET SPEED ONLY WHEN THE DRIVE IS IN REMOTE, IGNORING PLC LOGIC RUN CONTACT.
 2. RUN COMMAND COMES FROM PLC DO MODULE INTERPOSING RELAY BASED ON CONTROL LOGIC PROGRAMMED IN THE PLC.
 3. A PUMP TEMPERATURE/MOISTURE CONTROL MODULE SHALL BE FURNISHED WITH THE PUMP FOR INSTALLATION INSIDE THE VFD CABINET. PROVIDE SUFFICIENT SPACE IN THE VFD CABINET FOR INSTALLATION AND WIRING OF THE PUMP CONTROL MODULE AS SHOWN. COORDINATE REQUIREMENTS WITH THE PUMP MANUFACTURER.
 4. ALL DRIVES ABOVE 150 HP SHALL BE 18 PULSE DRIVES. PROVIDE INPUT LINE REACTORS AND OUTPUT FILTERS ON ALL DRIVES. FOR TYPE I STATION, SEE TABLE 805-09 FOR VFD RATING.
 5. WHERE WET WELL HATCH IS NOT WITHIN SIGHT FROM THE PUMP CONTROLS, PROVIDE PUMP MOTOR CONTROL CIRCUIT DISCONNECT SWITCH MOUNTED NEXT TO RESPECTIVE PUMP MOTOR TJB. THE DISCONNECT SWITCH SHALL BE LOCKABLE IN BOTH THE ON AND OFF POSITION, PROVIDE AN APPLETON, CATALOG NUMBER EDS2129 OR APPROVED EQUAL.
 6. SIZE OF MAIN SERVICE, AUTOMATIC TRANSFER SWITCH, VFD, CONDUCTORS, MOTOR STARTERS, CTS, MOTOR CIRCUIT BREAKER (MCB) AND CIRCUIT BREAKERS ARE TO BE DETERMINED BY HORSEPOWER OF PUMP SELECTED.
 7. PROVIDE DEDICATED CPT FOR EACH VFD. VERIFY POWER RATING OF CPT BASED ON SPECIFIC EQUIPMENT PROVIDED.
 8. TYPICAL FOR PUMP NO. X. X=1 THRU 3. PUMP MOTOR CONTROLS TYPICAL TO PUMP NO.X=1.
 9. PROVIDE AMMETER SWITCH (AMS) TO INTERFACE WITH CTS. AMMETER SWITCH SHALL BE ELECTRO SWITCH MODEL 24/OC OR EQUAL.

TYPICAL PUMP VFD CONTROL DIAGRAM
X = 1, 2, 3



STANDARD PLAN NO. 805-06	DATED AUGUST 1, 2011	SHEET NO. 1 OF 1
-----------------------------	-------------------------	---------------------

VFD CONTROL WIRING DIAGRAM
(TYPE I AND II PUMP STATIONS)

ENGINEERING DIVISION DEPARTMENT OF PUBLIC WORKS CITY OF BATON ROUGE & PARISH OF EAST BATON ROUGE			
DESIGNED A. SCHULZE	DRAWN G. VANNICE	CHECKED R. WRIGHT	APPROVED B. HARMON

DATE	MISC. REVISIONS	DESCRIPTION	BY
4-13			A.S.