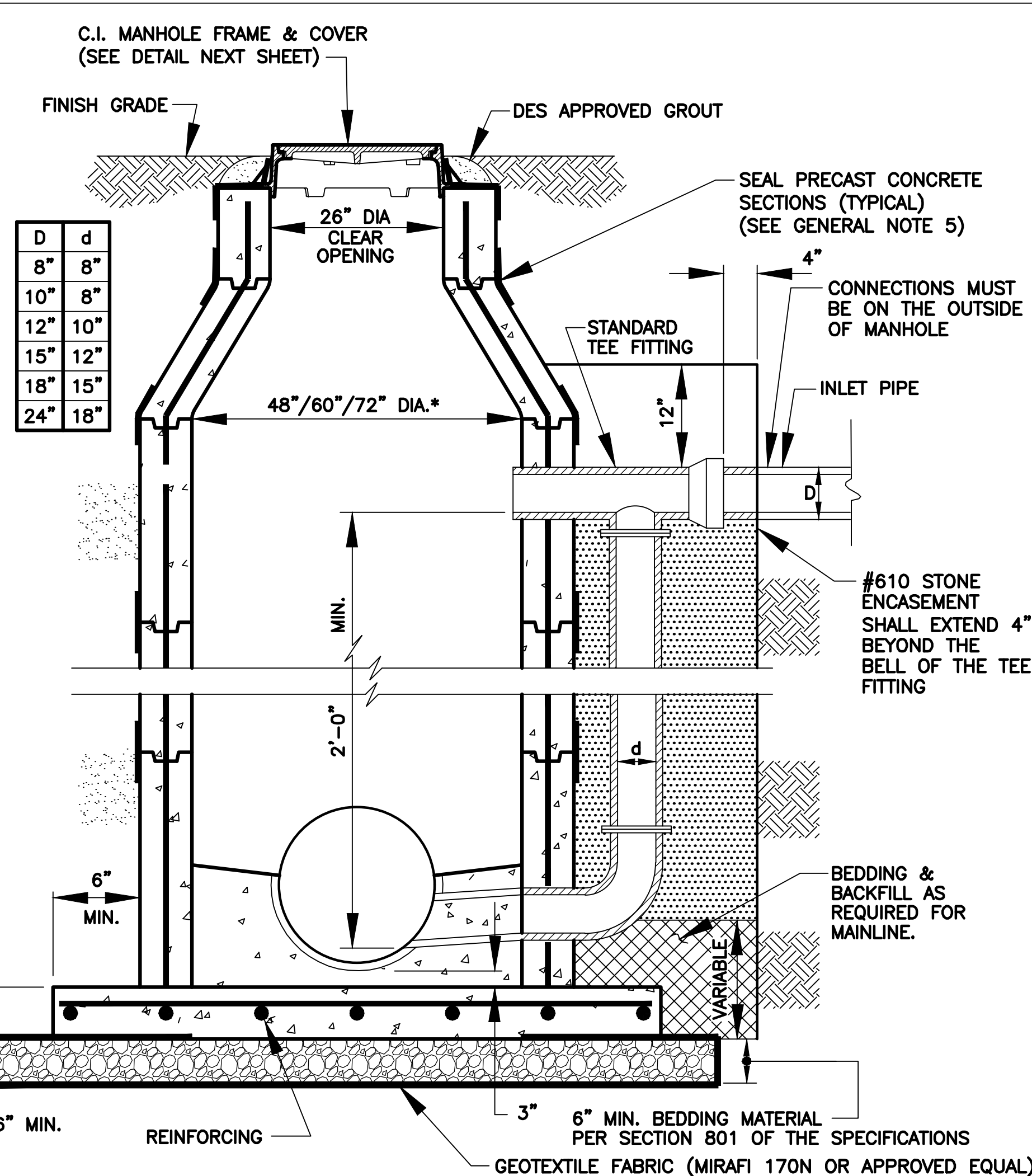
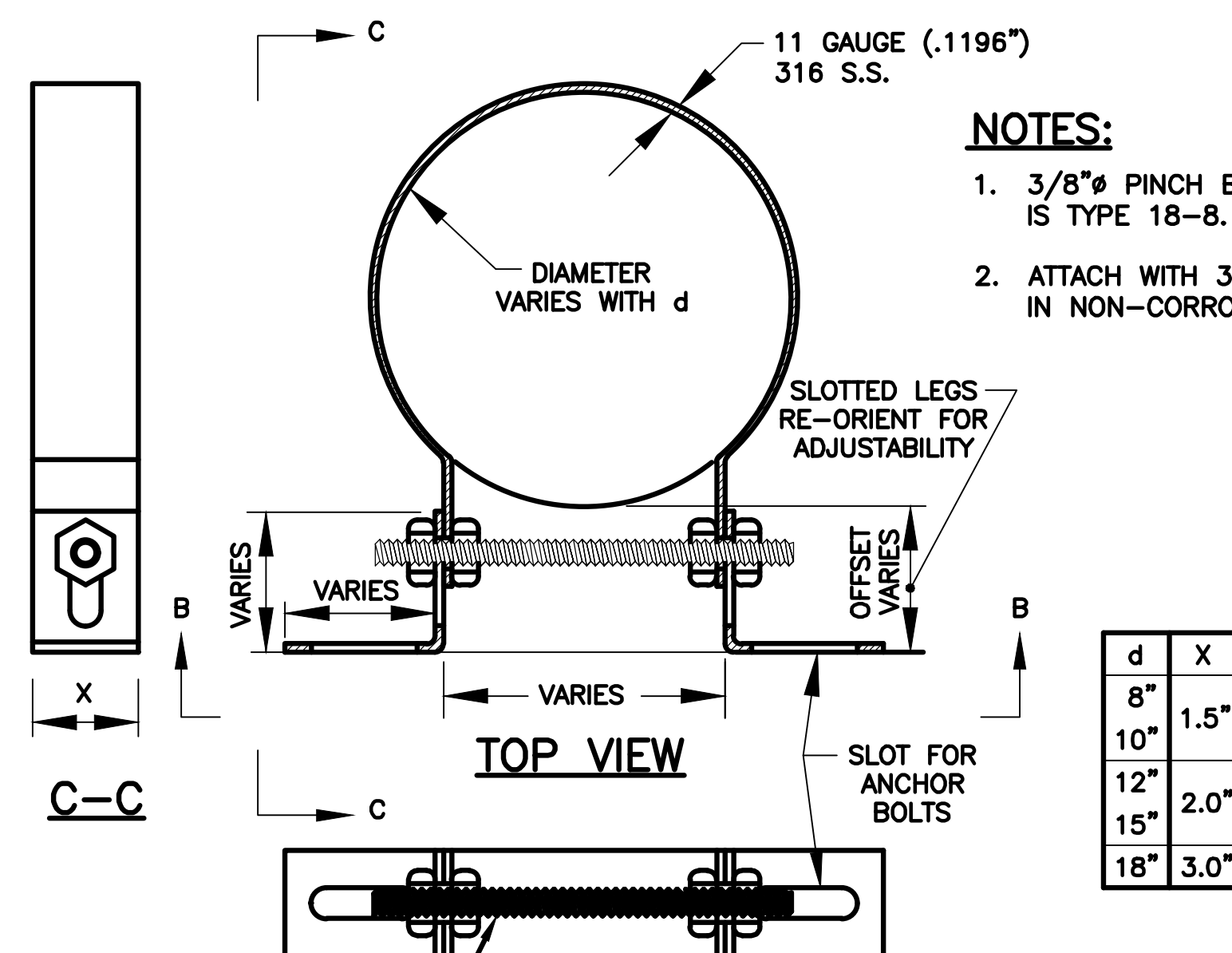


STANDARD GRAVITY SEWER INTERNAL DROP MANHOLE

N.T.S.

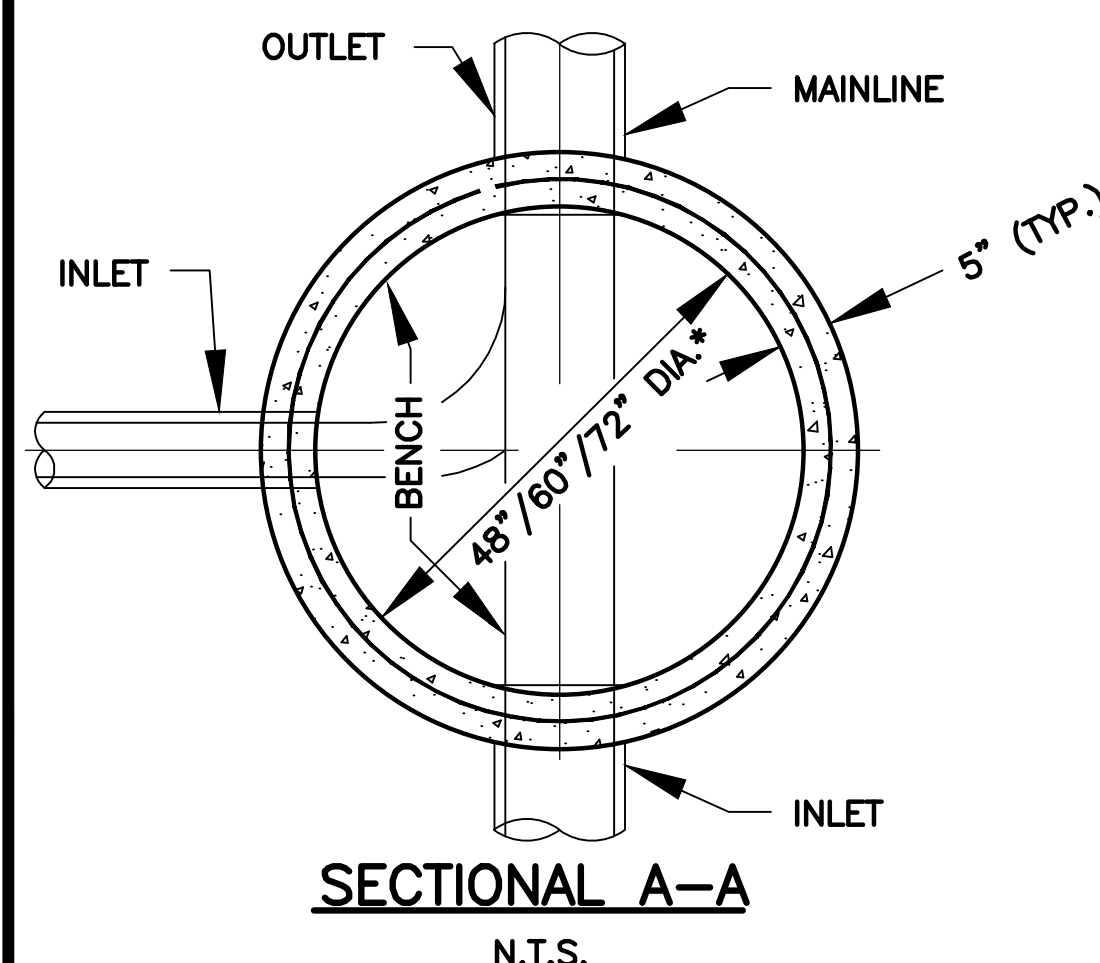
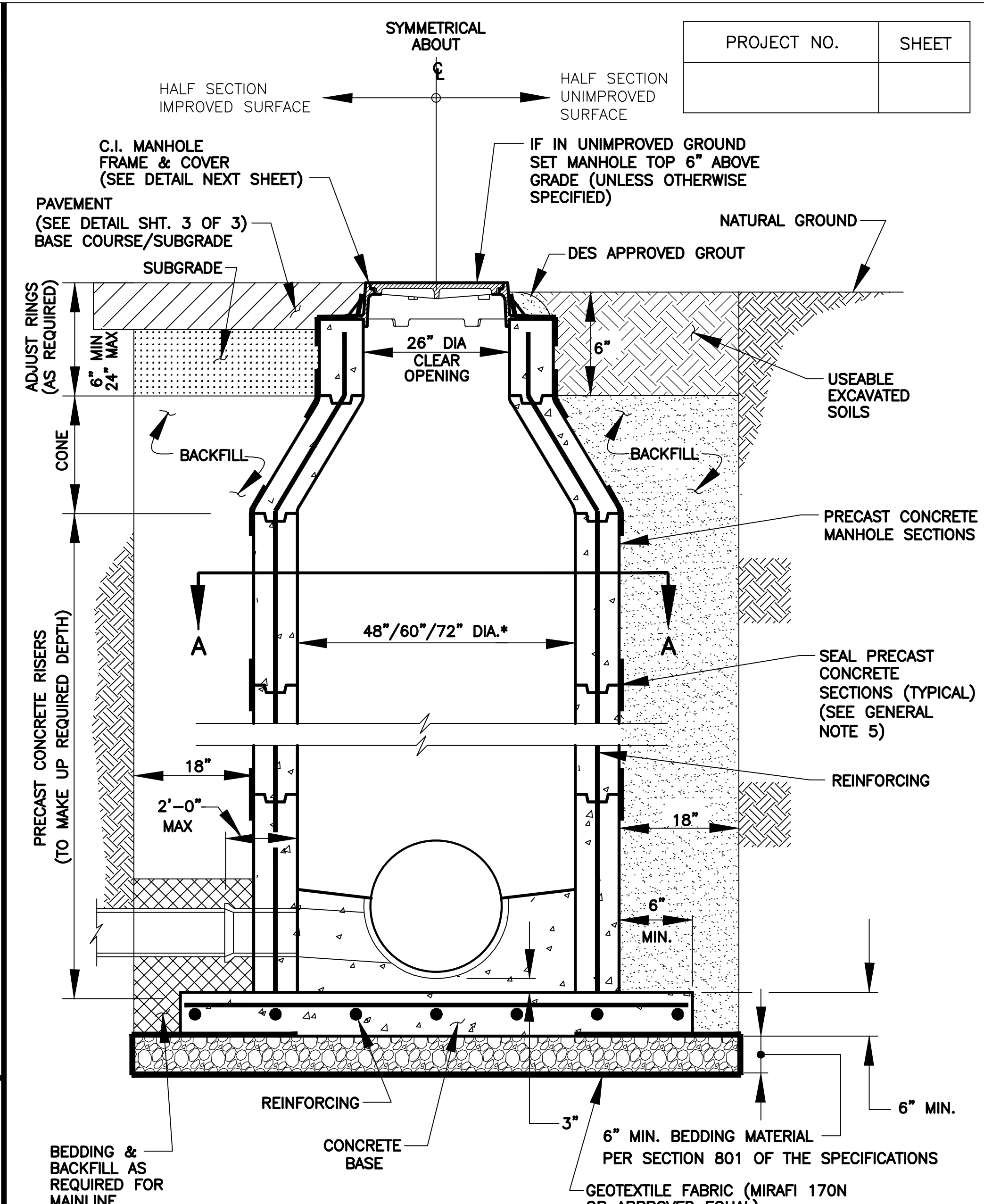


STANDARD GRAVITY SEWER DROP MANHOLE

N.T.S.

MANHOLE GENERAL NOTES:

- ALL STUBS FROM MANHOLES AND ENDS OF PIPE TO WHICH CONNECTIONS ARE TO BE MADE UNDER THIS CONTRACT SHALL BE PROVIDED WITH TEMPORARY WATER TIGHT PLUGS OR CAPS. ALL STUBS FOR CONNECTIONS TO OTHER CONTRACTS SHALL BE PROVIDED WITH WATER TIGHT PLUGS PLACED FROM INSIDE OF MANHOLE. SEWERS WHICH ARE TO BE CONNECTED TO MANHOLES WHICH WILL BE BUILT UNDER OTHER CONTRACTS SHALL BE PROVIDED WITH WATER TIGHT PLUGS AND CAPS. STUBS SHALL BE A MAXIMUM OF 2FT. IN LENGTH. SUCH PLUGS LOCATED AT JUNCTIONS OF TWO CONTRACTS SHALL REMAIN IN PLACE SHALL BE REMOVED BY OTHERS.
- THE BENCH SHALL SLOPE TOWARD THE INVERT CHANNEL AT THE RATE OF (1.5"/FT.), BUT MINIMUM OF 3" DIFFERENCE SHALL BE MAINTAINED FROM THE TOP OF CHANNEL TO THE WALL.
- ALL CAST IRON FRAME COVERS SHALL BE TRAFFIC BEARING. FRAME AND COVERS SHALL MEET OR EXCEED ALL REQUIREMENTS OF THE LATEST AMERICAN ASSOCIATION OF STATE HIGHWAY AND TRANSPORTATION OFFICIALS DESIGNATION: M308 STANDARD SPECIFICATION FOR DRAINAGE, SEWER, UTILITY, AND RELATED CASTINGS. THEY SHALL HAVE AN ENVIRONMENTALLY SAFE, WATER-BASE ASPHALTIC COATING WHICH IS NONTXIC, NONFLAMMABLE, COLORLESS, AND DRIES TO A HARD BLACK FINISH.
- THE DEPTH OF THE INVERT CHANNEL SHALL BE EQUAL TO HALF THE DIAMETER OF THE LARGEST DIAMETER SEWER PIPE IN THE MANHOLE.
- MANHOLE SECTIONS SHALL BE JOINED TOGETHER WITH FLEXIBLE WATERTIGHT RUBBER GASKETS AND EXTERNALLY SEALED AT THE JOINTS IN ACCORDANCE WITH THE SPECIFICATIONS.
- ALL MANHOLES ARE TO BE CONSTRUCTED OF PRECAST CONCRETE (BASE, RISERS AND CONE). NO BRICK MANHOLES WILL BE ACCEPTED UNLESS APPROVED IN WRITING.
- BEDDING AND BACKFILL SHALL BE IN ACCORDANCE WITH THE SPECIFICATIONS. SEE SPECIFICATIONS FOR MATERIAL REQUIREMENTS AND PLACEMENT AND COMPACTION OF PIPE BEDDING MATERIALS.
- PIPE PENETRATIONS SHALL CONFORM TO THE SPECIFICATIONS.
- REINFORCING FOR PRE-CAST MANHOLES AS PER ASTM C-478.
- FOR SEWERS 16" DIA. OR LESS CONSTRUCT 48" DIA. MANHOLE, FOR SEWERS LARGER THAN 16" UP TO 24" DIA. CONSTRUCT 60" DIA. MANHOLE, AND FOR SEWERS LARGER THAN 24" DIA. CONSTRUCT 72" DIA. MANHOLE. MANHOLE DIA. SIZING, HOWEVER IS CONTINGENT UPON THE LIMITATIONS OF THE MANUFACTURER DUE TO PIPE SIZE AND ORIENTATION AT THE MANHOLE. THE DESIGN ENGINEER MUST VERIFY THAT THE PROPER MANHOLE DIA. IS PROVIDED.
- MANHOLE SHALL NOT INCLUDE STEPS.



| | | |
|---|-------------------------|----------------------|
| STANDARD PLAN NO. 803-01 | DATED AUGUST 1, 2011 | SHEET NO. 1 OF 4 |
| SANITARY SEWER MANHOLES | | |
| ENGINEERING DIVISION DEPARTMENT OF PUBLIC WORKS CITY OF BATON ROUGE & PARISH OF EAST BATON ROUGE | | |
| DESIGNED A. SCHULZE | DRAWN G. VANNICE | CHECKED R. WRIGHT |
| APPROVED A. SMITH | | |