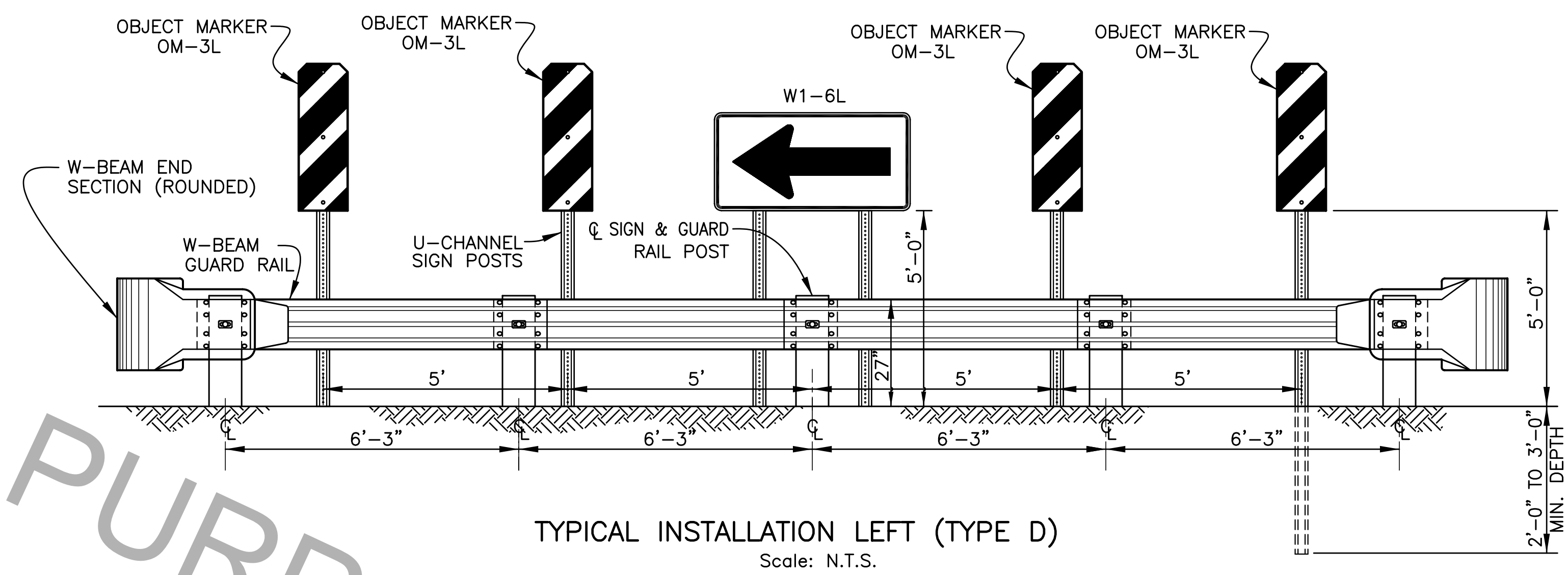
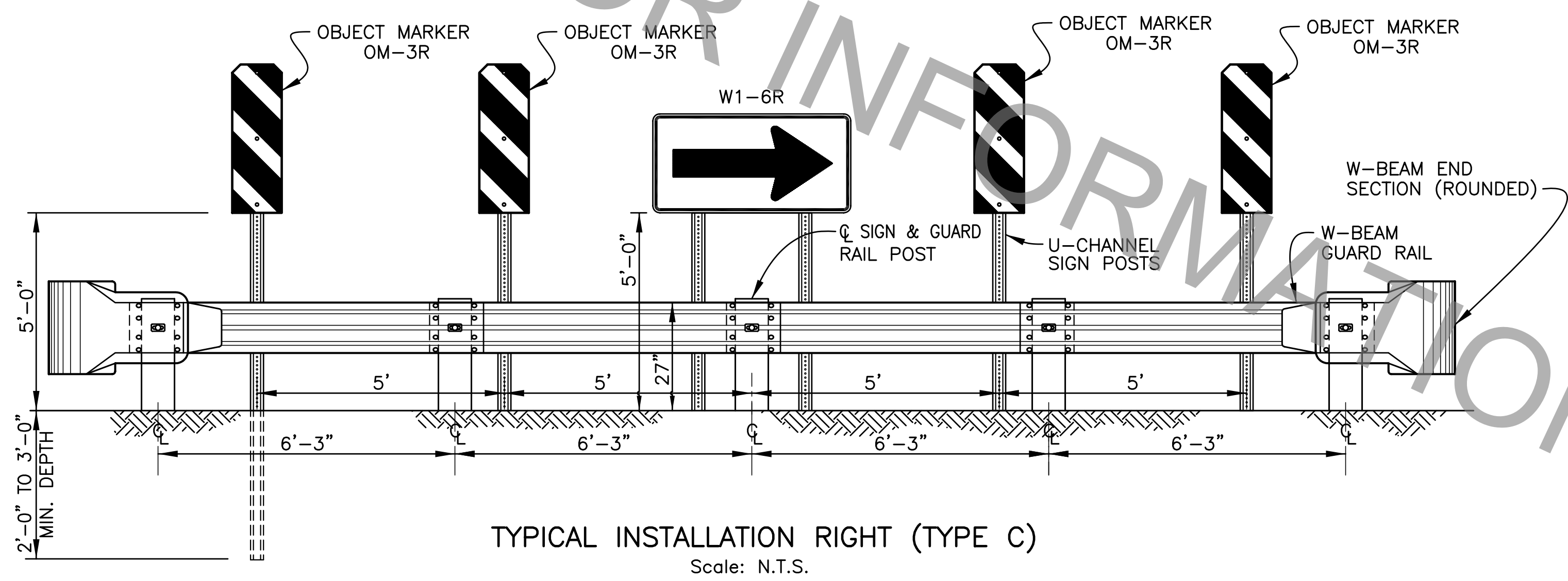
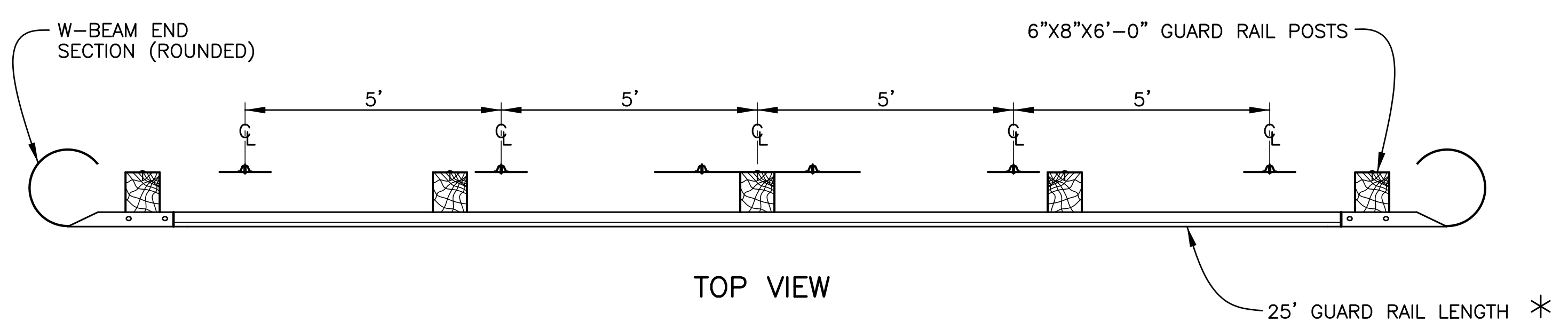
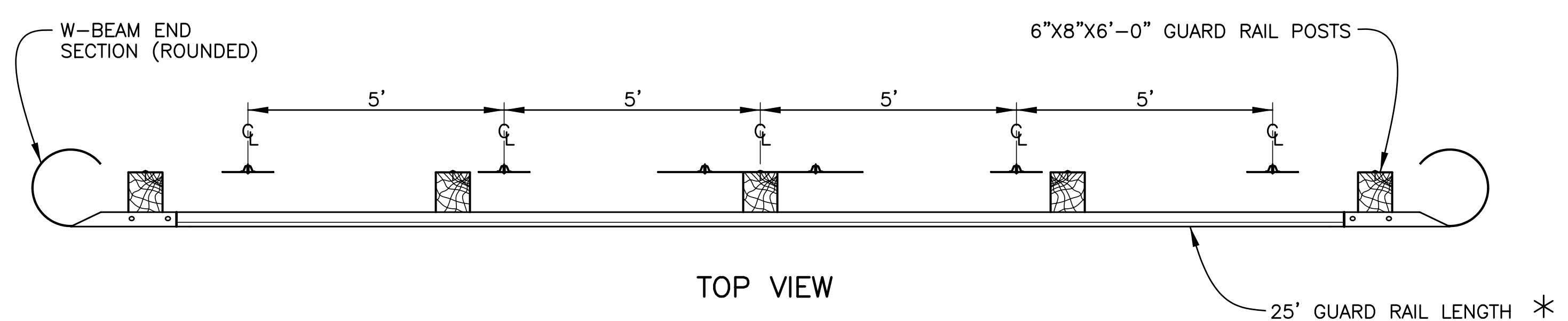
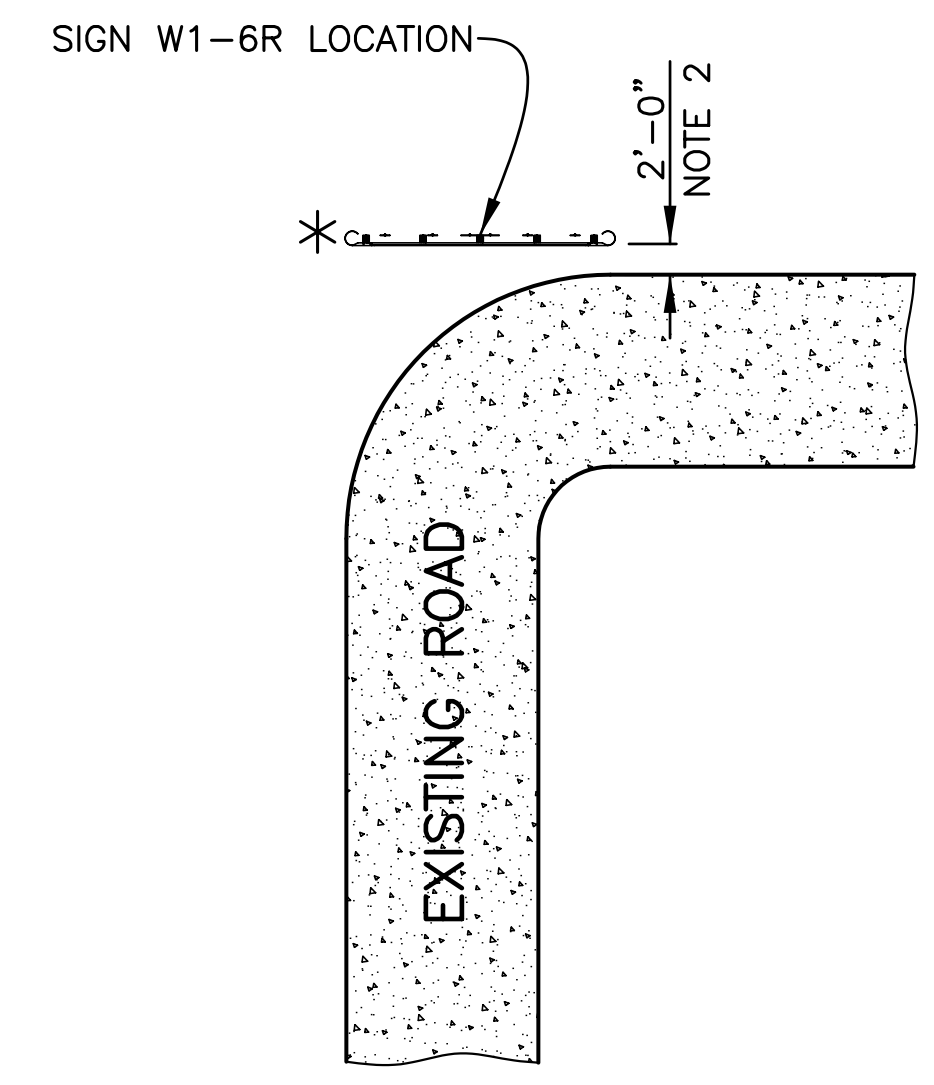


PROJECT NO.	SHEET

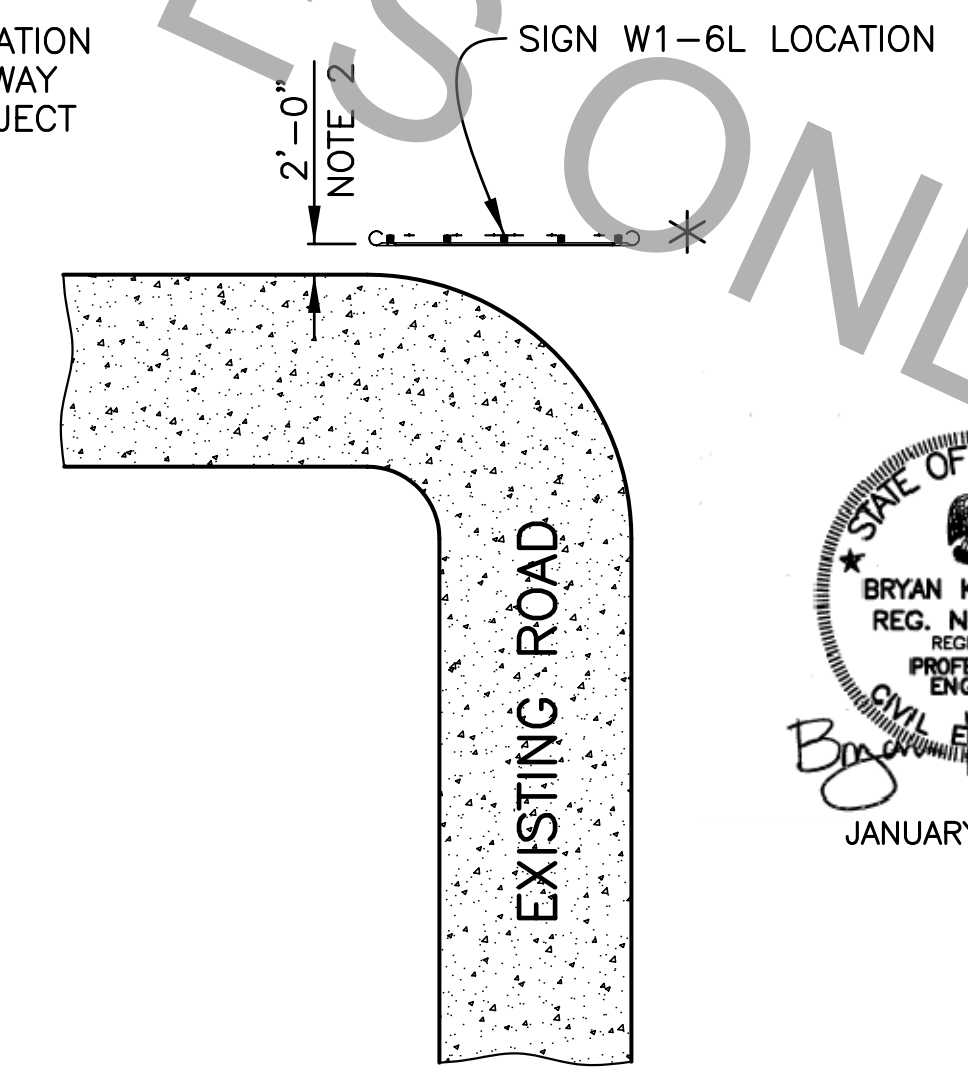


- NOTE:**
1. FOR INSTALLATIONS WHERE GUARD RAIL APPLICATION IS STRUCTURAL, THRIE BEAM RAIL WILL BE REQUIRED WITH APPROPRIATE END TREATMENT. POSTS WOULD BE AT 3'-1-1/2" SPACING.
 2. PLACEMENT OF END OF ROAD INSTALLATION SHALL BE 2'-0" FROM END OF ROADWAY UNLESS DIRECTED OTHERWISE BY PROJECT ENGINEER.

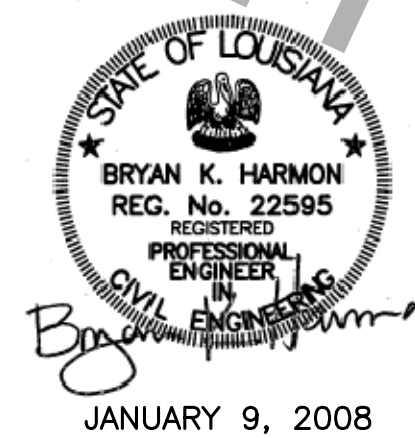


90° RIGHT BEND IN ROADWAY ALIGNMENT

- NOTE:**
1. FOR INSTALLATIONS WHERE GUARD RAIL APPLICATION IS STRUCTURAL, THRIE BEAM RAIL WILL BE REQUIRED WITH APPROPRIATE END TREATMENT. POSTS WOULD BE AT 3'-1-1/2" SPACING.
 2. PLACEMENT OF END OF ROAD INSTALLATION SHALL BE 2'-0" FROM END OF ROADWAY UNLESS DIRECTED OTHERWISE BY PROJECT ENGINEER.



90° LEFT BEND IN ROADWAY ALIGNMENT



STANDARD PLAN NO. 905-40	DATED JANUARY 9, 2008	SHEET NO. 2 OF 5
-----------------------------	--------------------------	---------------------

END OF ROAD INSTALLATIONS
(90° BEND IN ROADWAY ALIGNMENT)

ENGINEERING DIVISION DEPARTMENT OF PUBLIC WORKS CITY OF BATON ROUGE & PARISH OF EAST BATON ROUGE			
DESIGNED	DRAWN	CHECKED	APPROVED
Traffic Engineering	G. VANNICE	H. PYLANT	I. PARTENHEIMER

DATE	DESCRIPTION REVISIONS	BY