

PROJECT NO.	SHEET

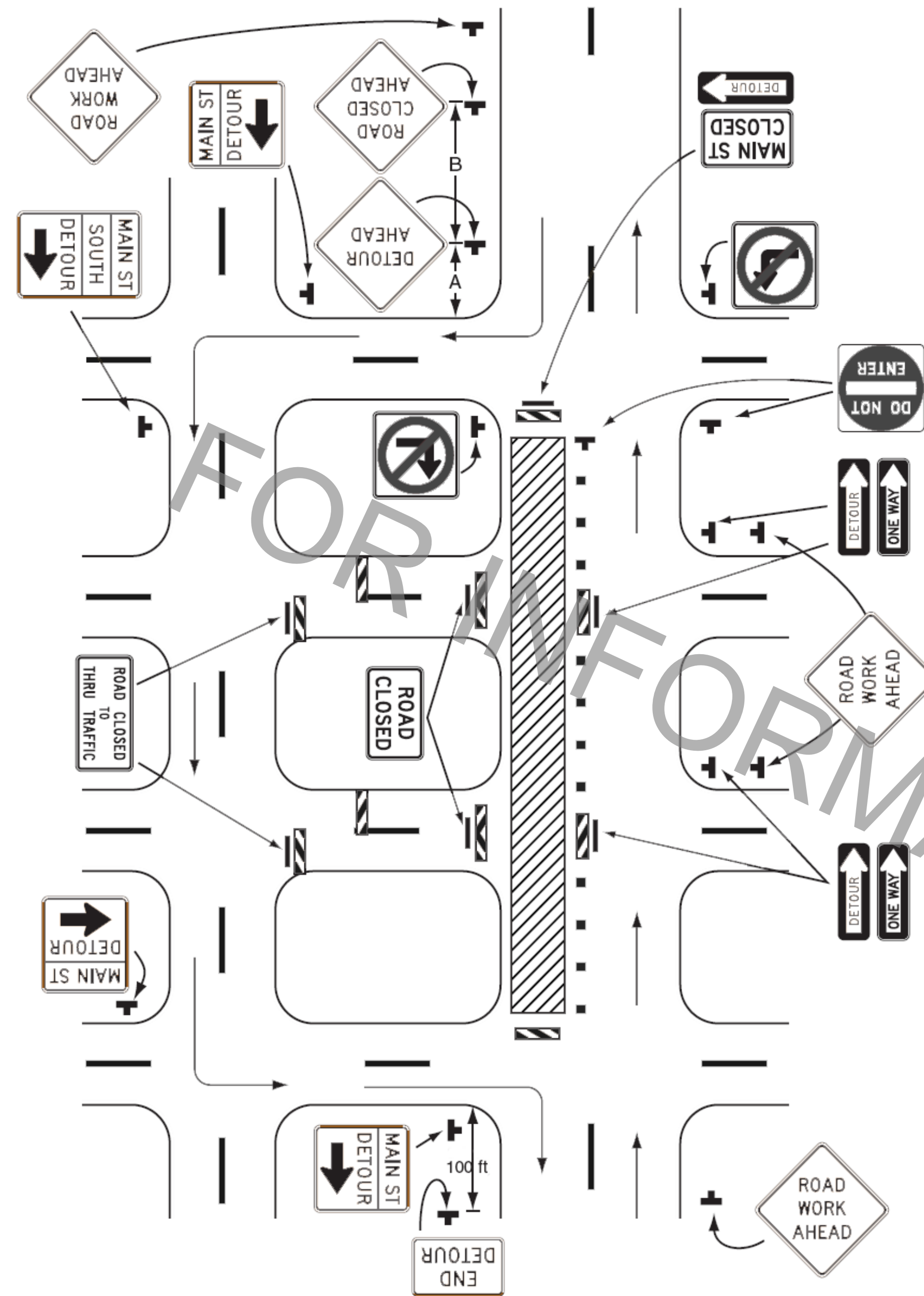


Figure TA-19
Detour for One Travel Direction

Notes:

1. This plan should be used for streets without posted route numbers.
2. On multi-lane streets, Detour signs with an Advance Turn Arrow should be used in advance of a turn.
3. The STREET CLOSED legend may be used in place of ROAD CLOSED.
4. Additional DO NOT ENTER signs may be used at intersections with intervening streets.
5. Warning lights may be used on Type III Barricades.
6. Detour signs may be located on the far side of intersections.
7. A Street Name sign may be mounted with the Detour sign. The Street Name sign may be either white on green or black on orange.
8. When used, the Street Name sign shall be placed above the Detour sign.

This sheet shall be used with Standard Plan No. 905-01.

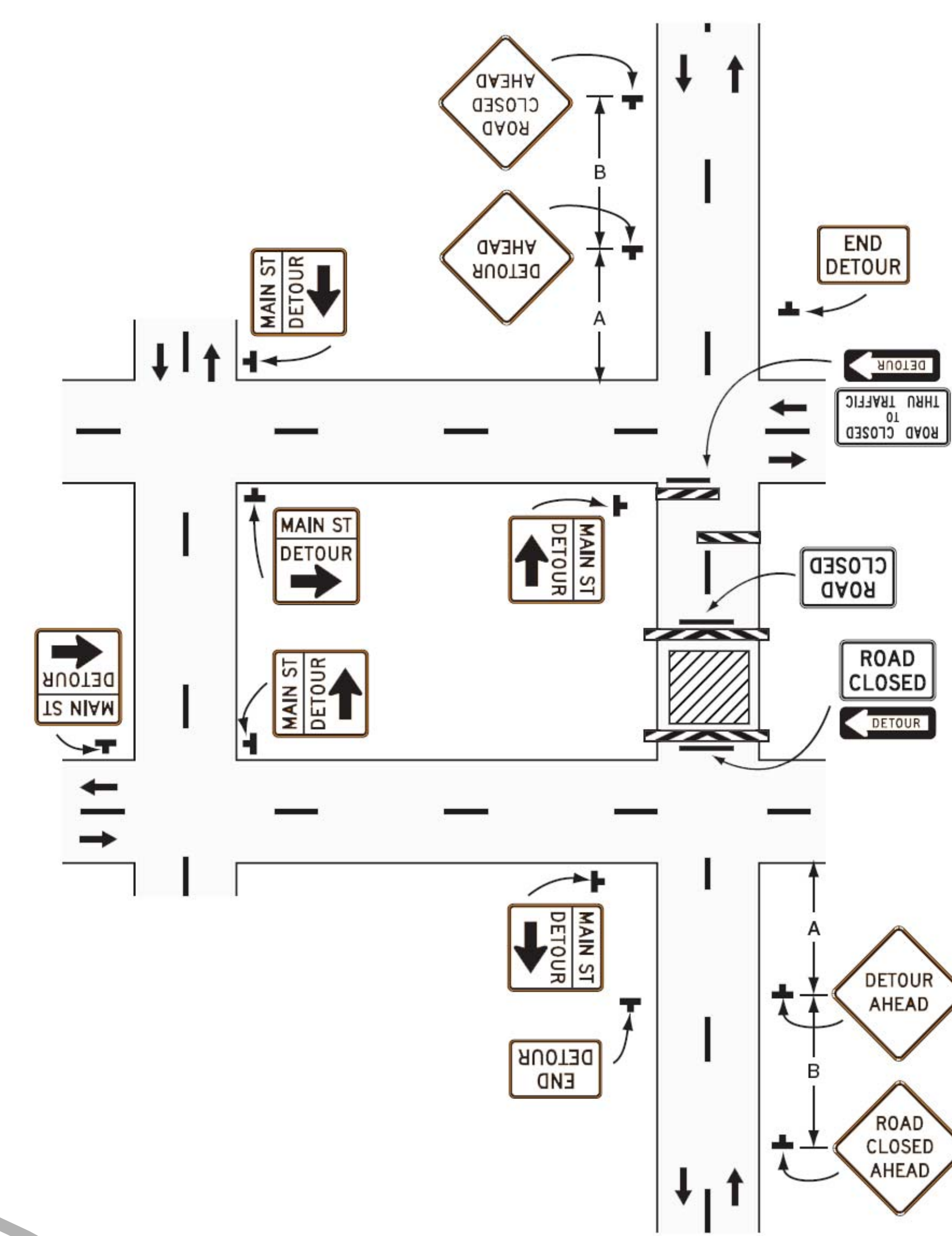
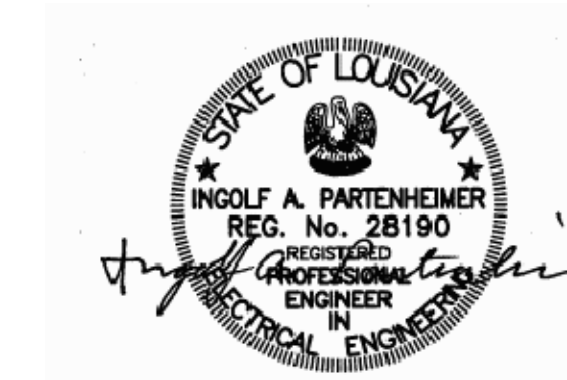


Figure TA-20
Detour for Closed Street

Notes:

1. This plan should be used for streets without posted route numbers.
2. On multi-lane streets, Detour signs with an Advance Turn Arrow should be used in advance of a turn.
3. Flashing warning lights and/or flags may be used to call attention to the advance warning signs.
4. Flashing warning lights may be used on Type III Barricades.
5. Detour signs may be located on the far side of intersections. A Detour sign with an advance arrow may be used in advance of a turn.
6. A Street Name sign may be mounted with the Detour sign. The Street Name sign may be either white on green or black on orange.
7. When used, the Street Name sign shall be placed above the Detour sign.



SEPTEMBER 28, 2007

STANDARD PLAN NO. 905-07	DATED September 28, 2007	SHEET NO. 1 OF 1
-----------------------------	-----------------------------	---------------------

TEMPORARY TRAFFIC CONTROL
TYPICAL APPLICATIONS

ENGINEERING DIVISION DEPARTMENT OF PUBLIC WORKS CITY OF BATON ROUGE & PARISH OF EAST BATON ROUGE			
DESIGNED	DRAWN	CHECKED	APPROVED
MUTCD	G. CHENG	B. HARMON	I. PARTENHEIMER

8/6/10	STANDARD PLAN NO. & NOTES REVISION.	G. C.
DATE	DESCRIPTION	BY
	REVISIONS	