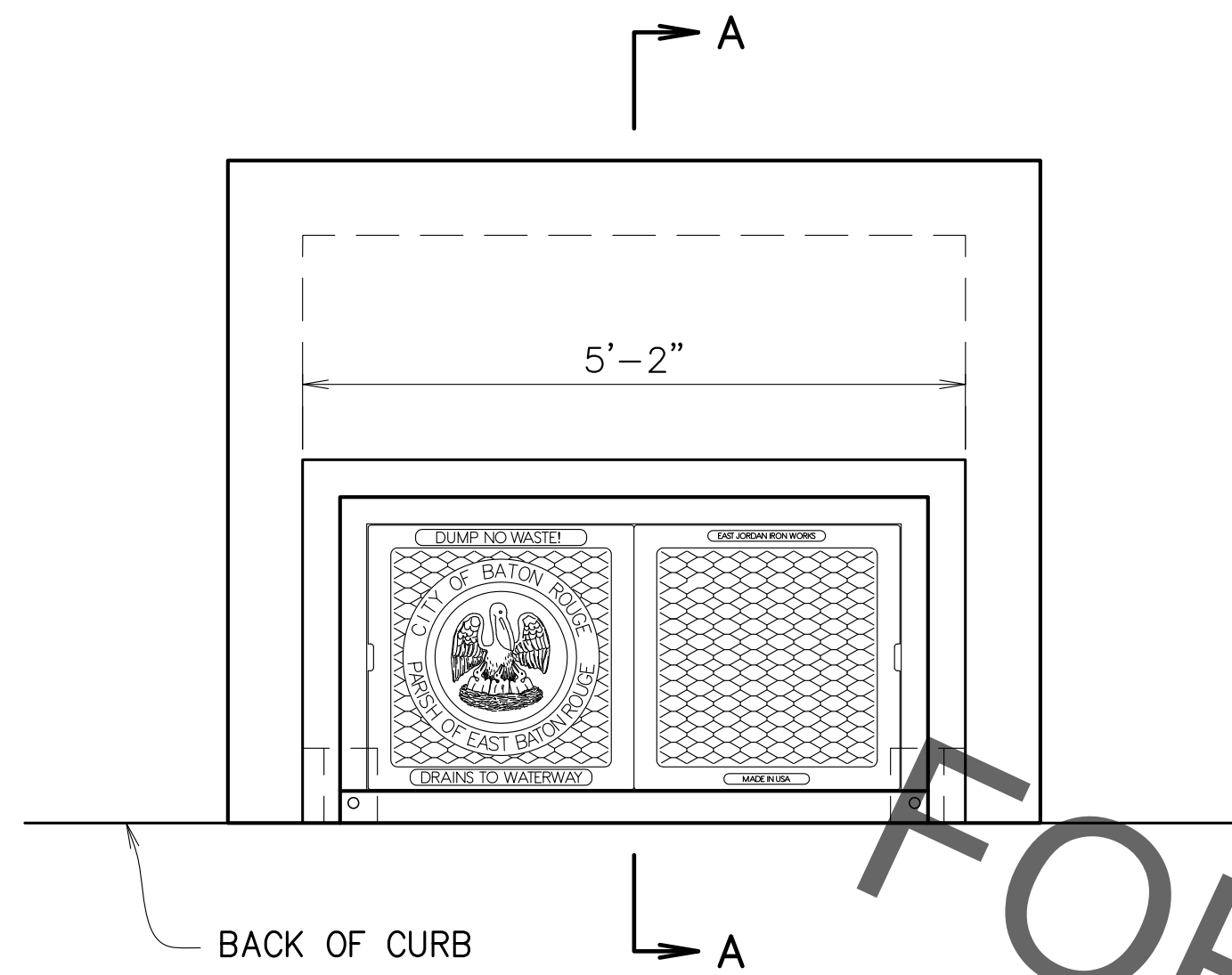
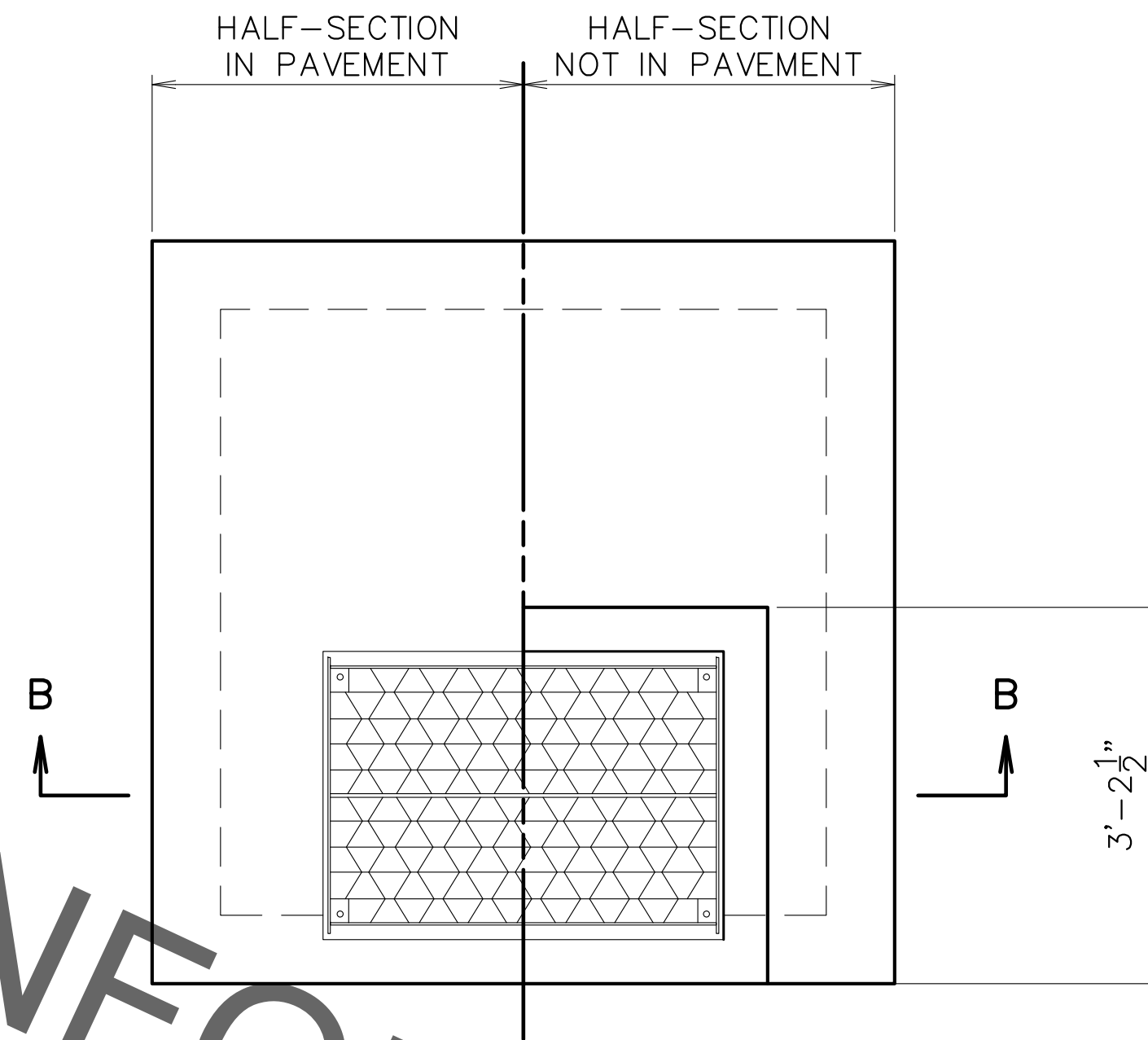


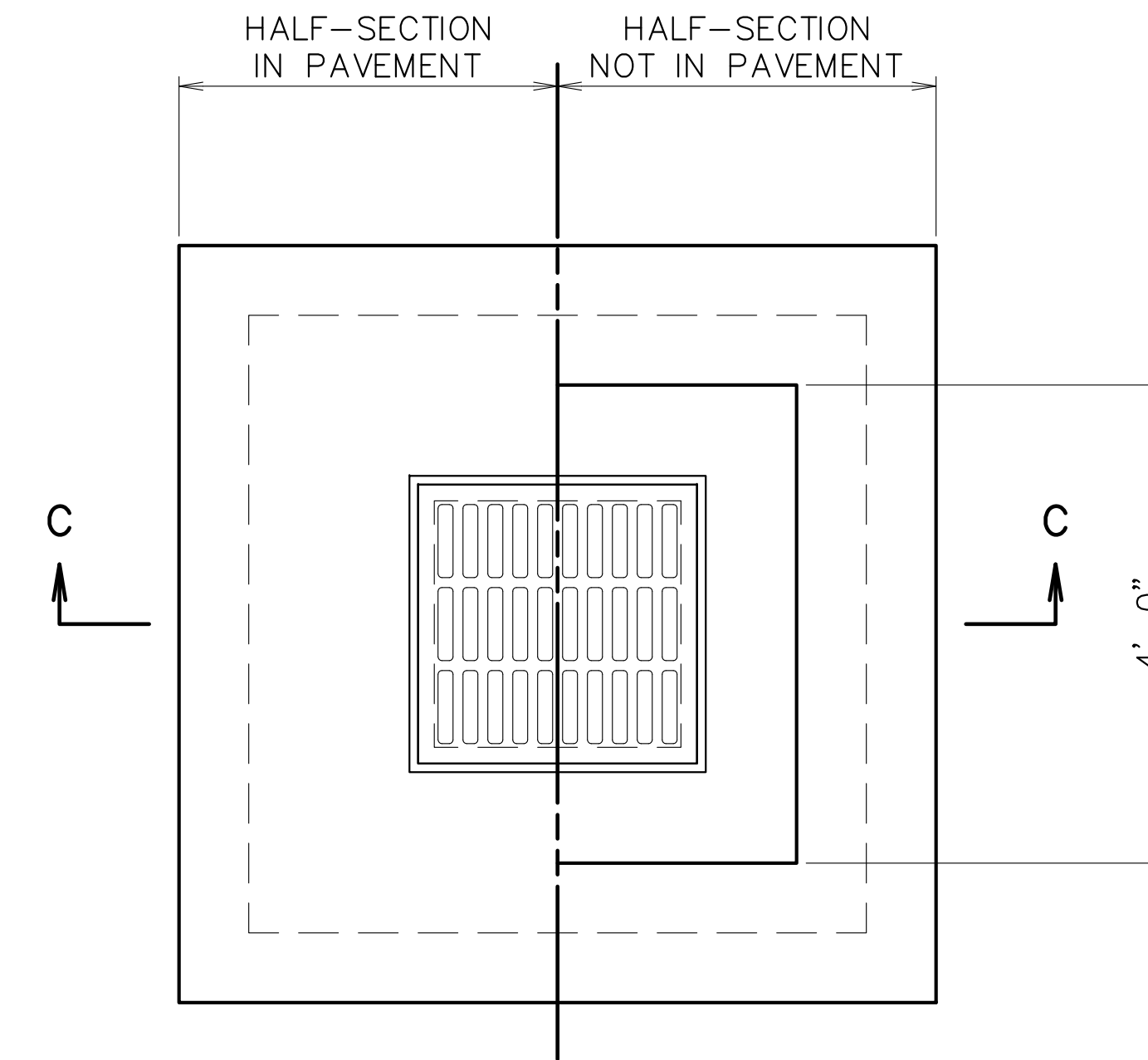
| | |
|-------------|-------|
| PROJECT NO. | SHEET |
| | |



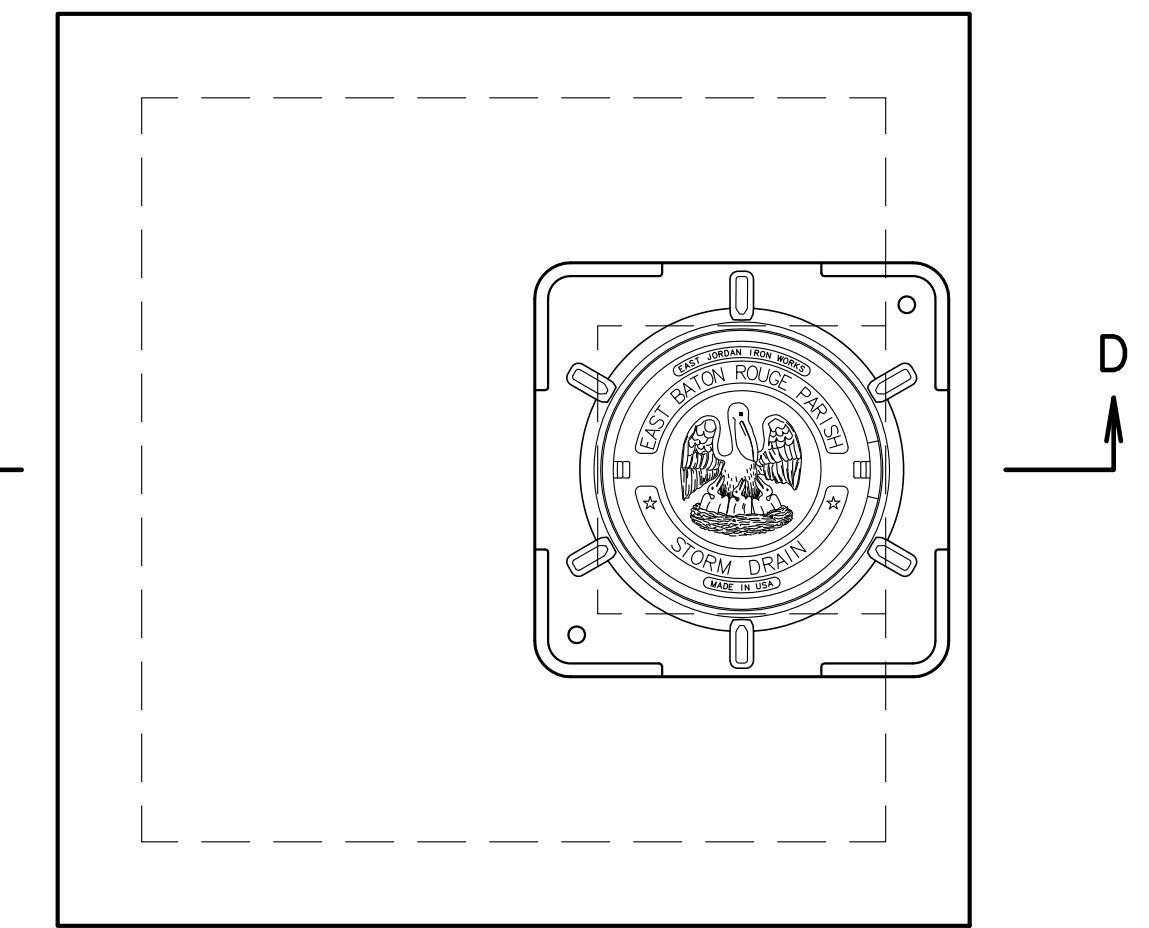
CURB INLET TOP VIEW
TYPE 1 CURB INLET WITH FRAME
SCALE: 3/4"=1'-0"



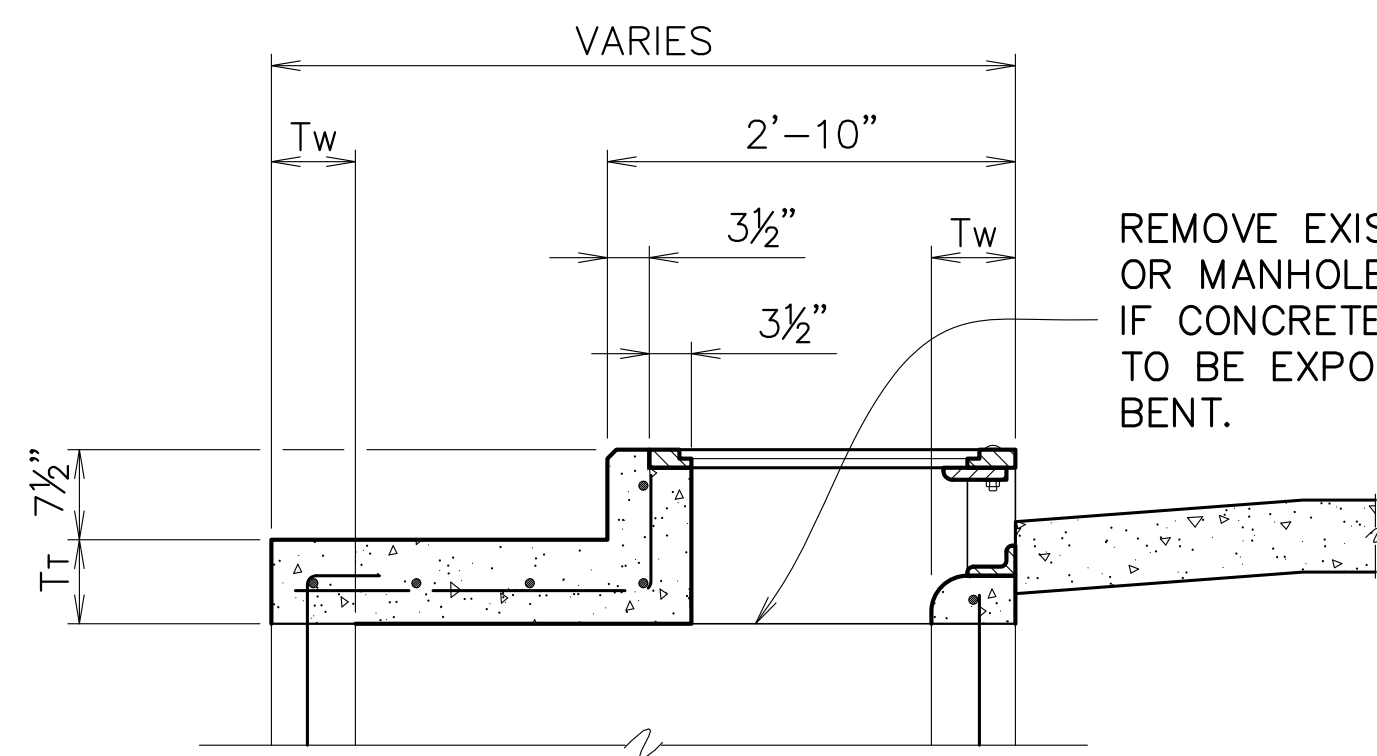
RETICULINE GRATE TOP VIEW
TYPE 2
RIVETED RETICULINE GRATE WITH FRAME
SCALE: 3/4"=1'-0"



BAR GRATE TOP VIEW
TYPE 3
CAST IRON GRATE WITH FRAME
SCALE: 3/4"=1'-0"

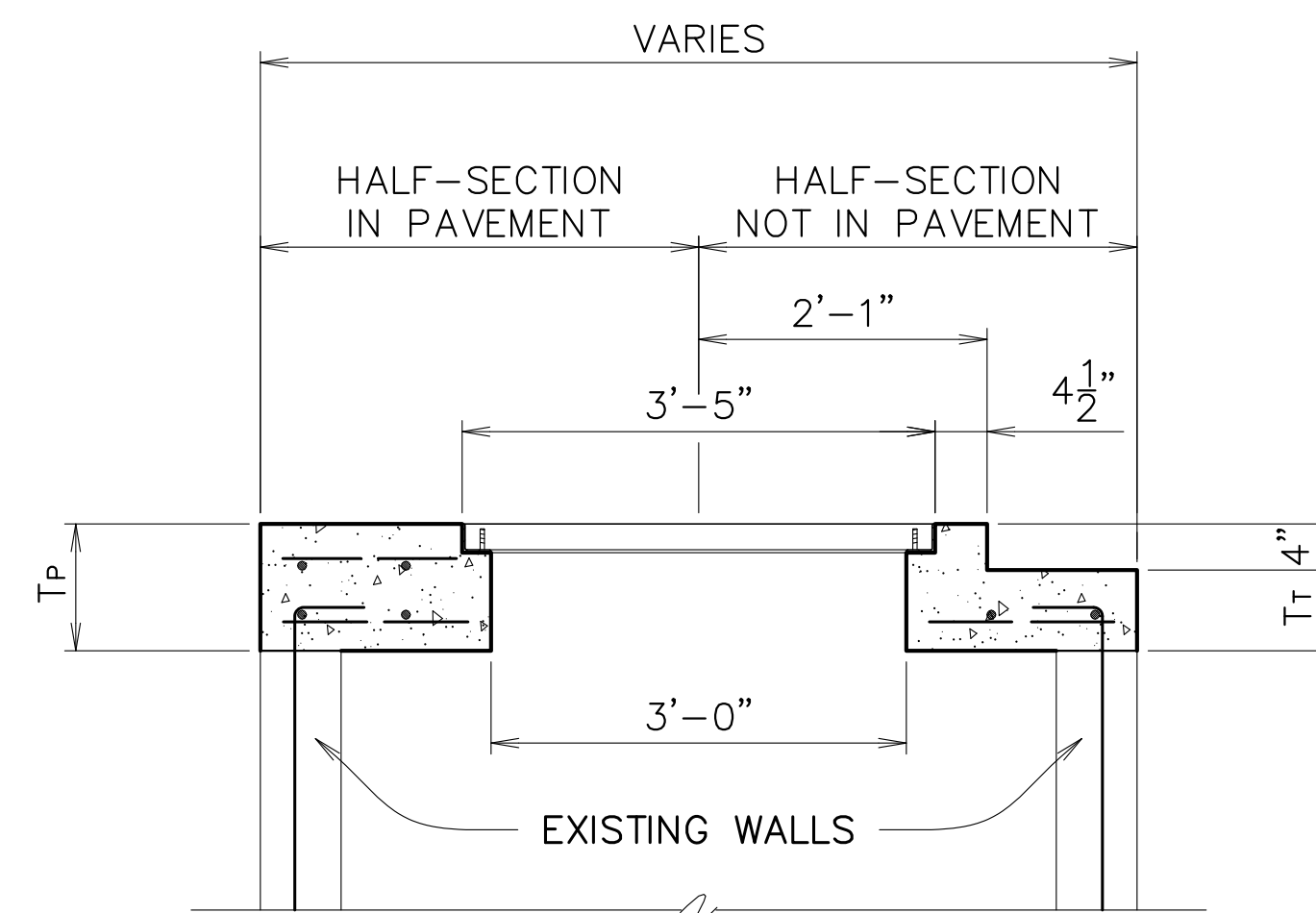


MANHOLE PLAN TOP VIEW
TYPE 9 MANHOLE ACCESS COVER
SCALE: 3/4"=1'-0"

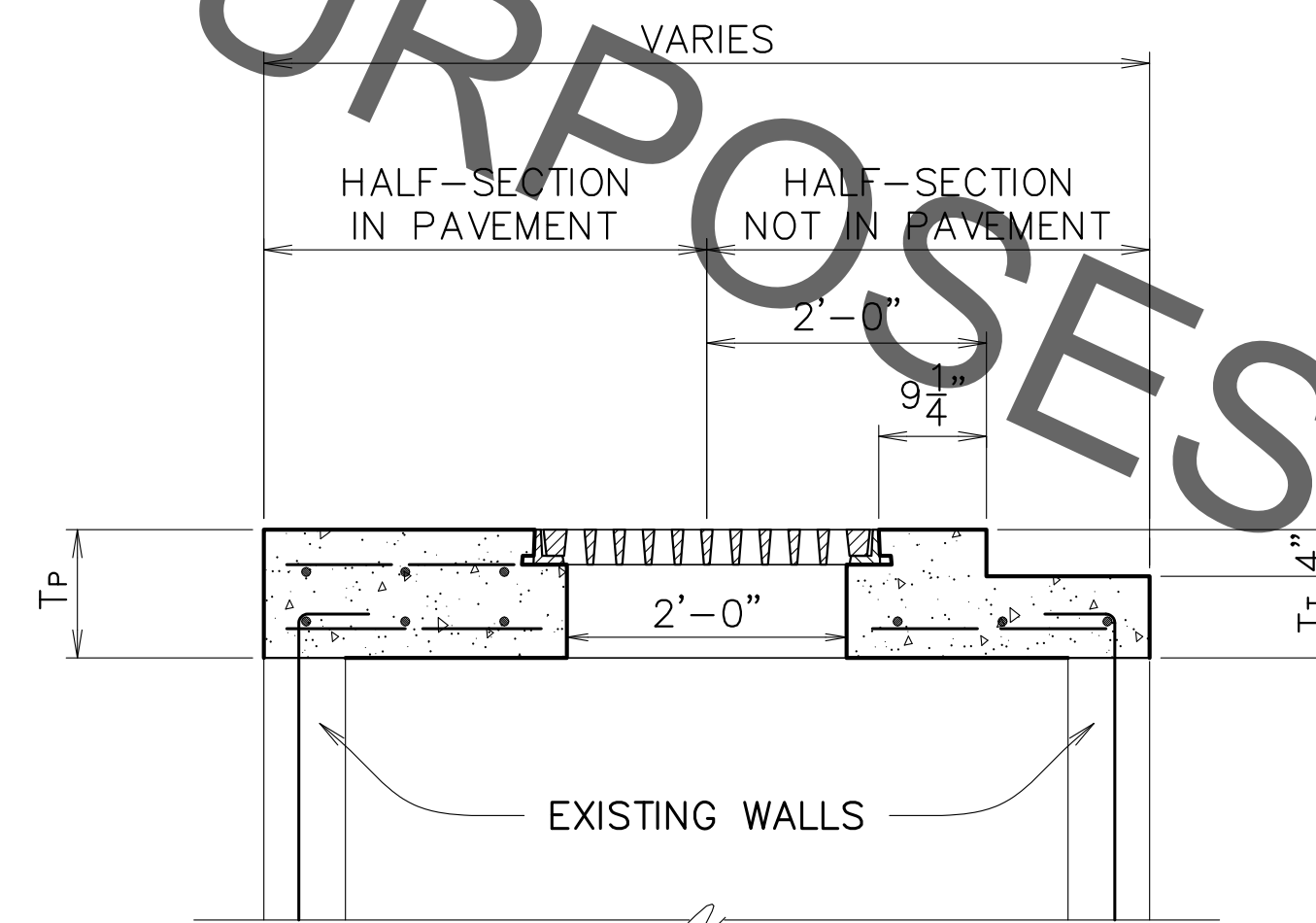


SECTION A-A
SCALE: 3/4"=1'-0"

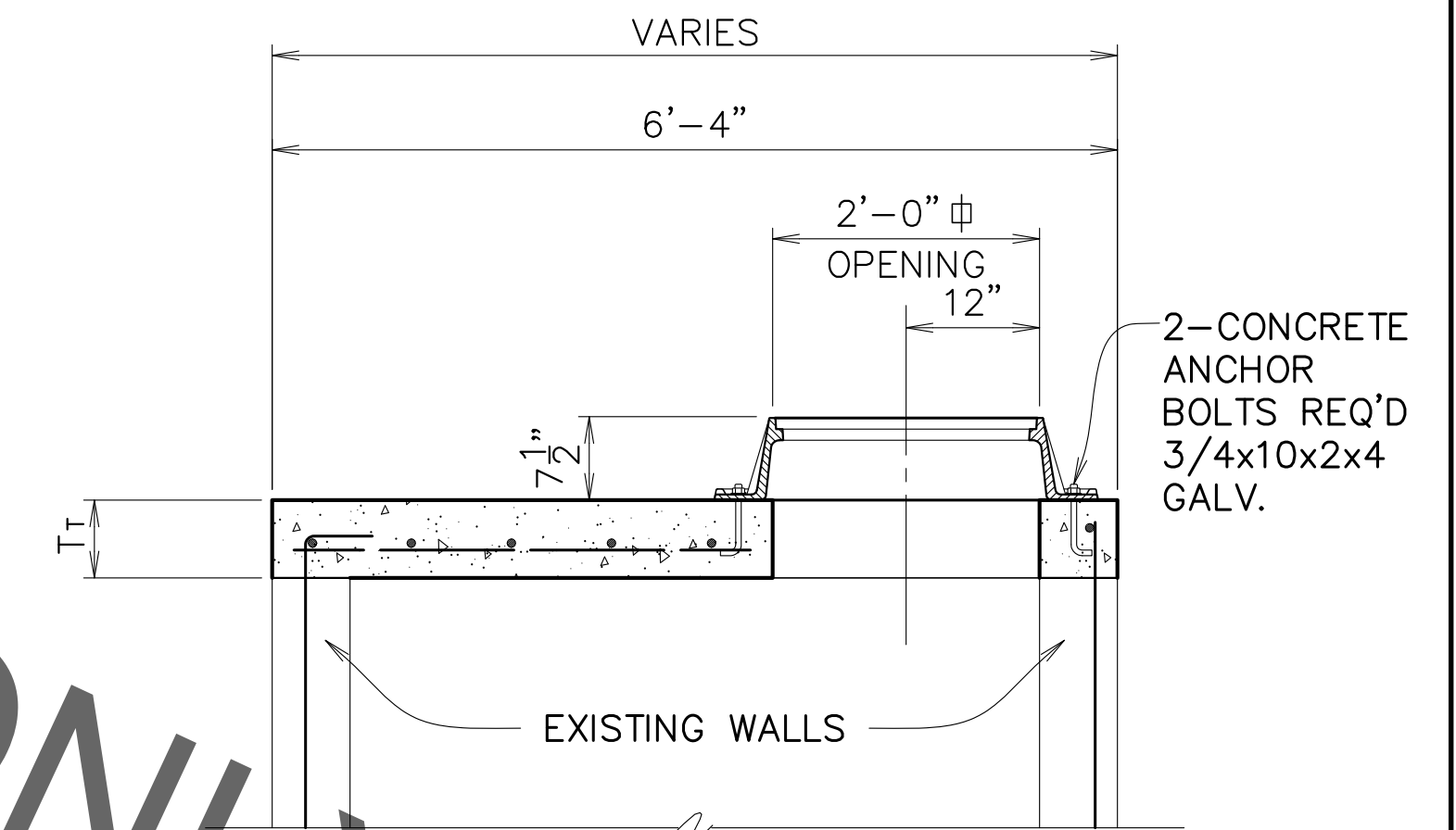
REMOVE EXISTING INLET OR MANHOLE TO THIS LINE. IF CONCRETE, EXISTING BARS TO BE EXPOSED, CLEANED AND BENT.



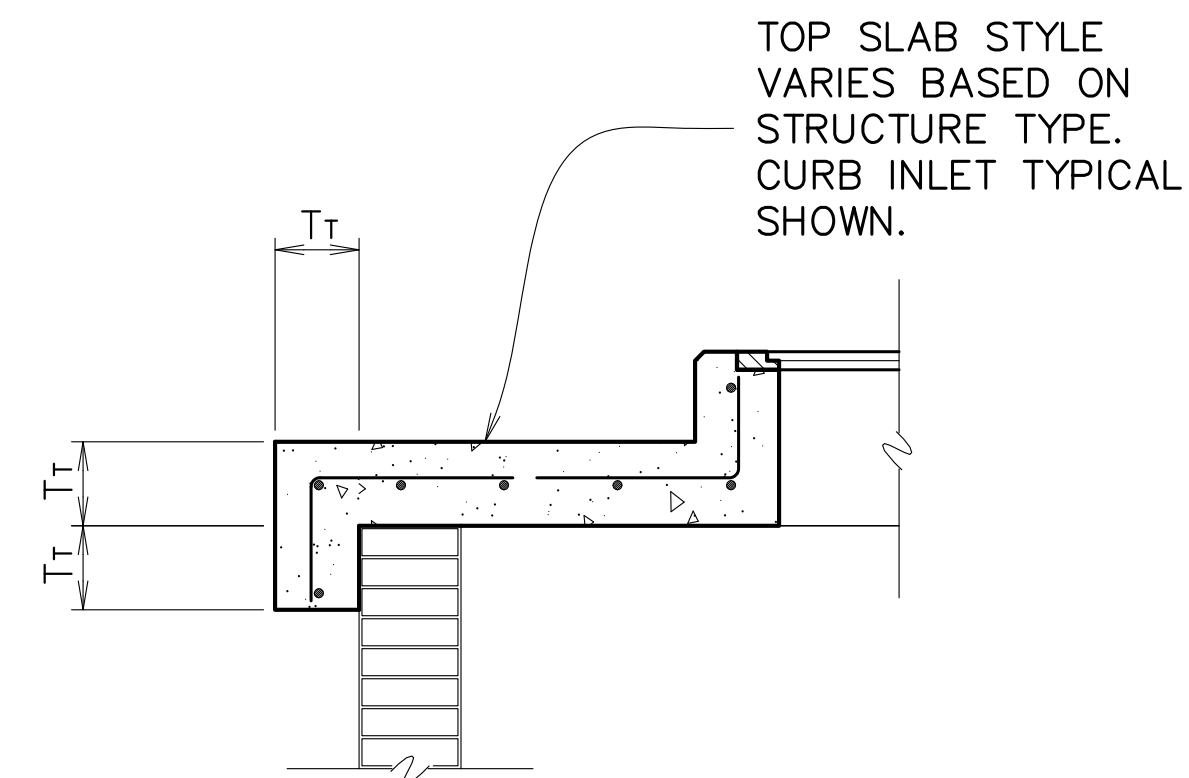
SECTION B-B
SCALE: 3/4"=1'-0"



SECTION C-C
SCALE: 3/4"=1'-0"



SECTION D-D
SCALE: 3/4"=1'-0"



COLLAR TYPICAL BRICK WALL CONNECTION DETAIL
SCALE: 3/4"=1'-0"

- NOTE:**
- SEE STANDARD PLAN 702-99 FOR FRAME AND COVER DETAILS. FRAME AND COVER TYPE AS SHOWN.
 - SEE STANDARD PLAN 702-96 FOR THICKNESS, REINFORCING STEEL, AND OTHER STRUCTURAL DETAILS.
 - SEE STANDARD PLAN 702-98 FOR CURB TRANSITION DETAILS.
 - JOINTS BETWEEN STRUCTURAL ELEMENTS SHALL BE TREATED WITH TYPE II EPOXY BONDING AGENT WHEN BONDING TO EXISTING CONCRETE.

STATE OF LOUISIANA
BRYAN K. HARMON
REG. No. 22595
REGISTERED PROFESSIONAL ENGINEER
DECEMBER 6, 2010

| | | |
|-----------------------------|-----------------------|--------------------|
| STANDARD PLAN No. 702-51 | DATED DEC. 6, 2010 | SHT. No. 1 OF 1 |
|-----------------------------|-----------------------|--------------------|

CONVERSION OF EXISTING INLET OR MANHOLE

| | | | |
|--|--------------|----------------|-----------------------|
| ENGINEERING DIVISION DEPARTMENT OF PUBLIC WORKS CITY OF BATON ROUGE & PARISH OF EAST BATON ROUGE | | | |
| DESIGNED GLP | DRAWN GLP | CHECKED GLP | APPROVED B. HARMON |

| | | |
|------|-------------------------|----|
| DATE | DESCRIPTION REVISION | BY |
| | | |