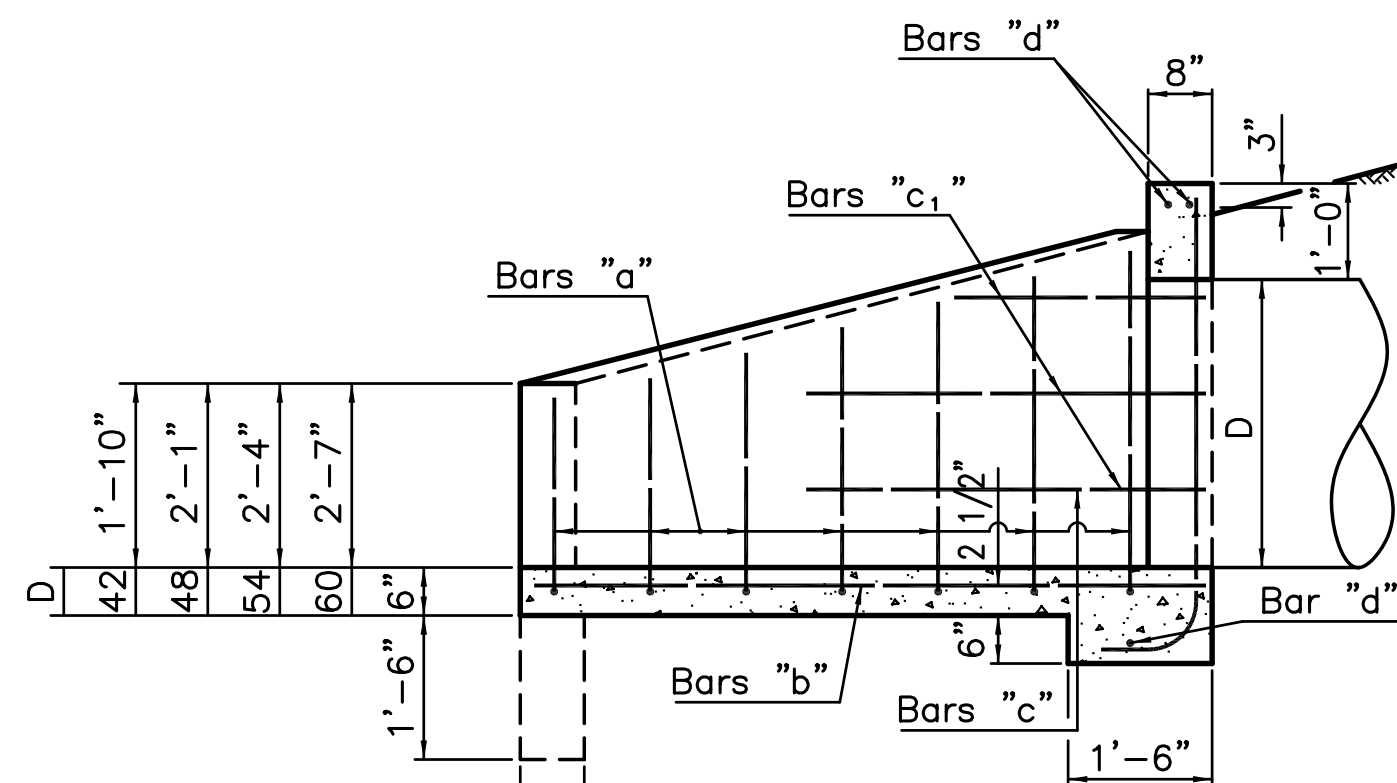


D	Length
42	5'-0 1/2"
48	5'-6 1/2"
54	6'-0 1/2"
60	6'-6 1/2"



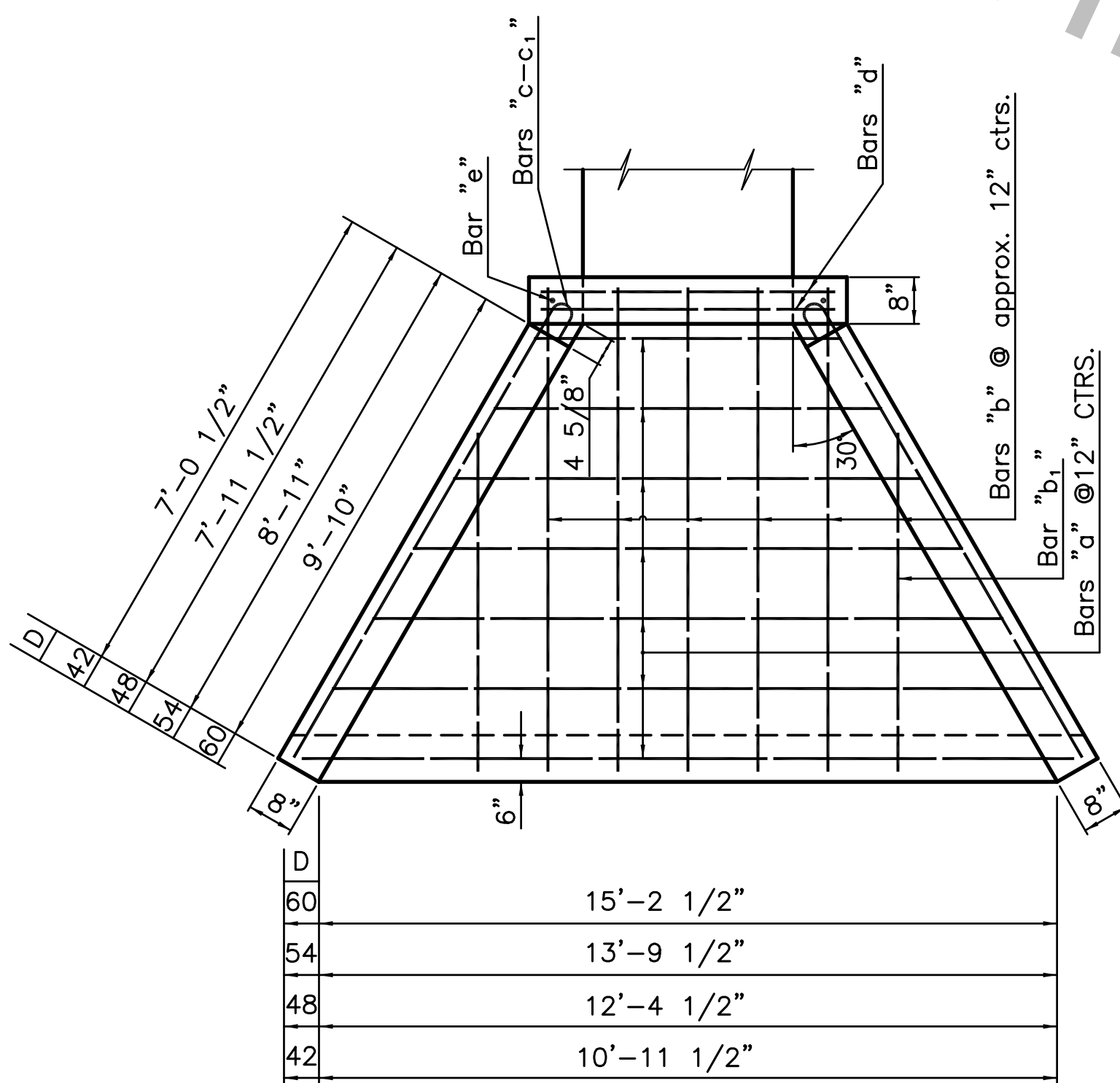
D	Length
42	6'-5 1/4"
48	7'-2 7/8"
54	8'-0 1/2"
60	8'-10 1/8"

2'-6"	14'-4"
2'-10"	13'-2"
3'-2"	12'-0"
3'-6"	10'-10"
3'-10"	9'-8"
4'-2"	8'-6"
4'-6"	7'-4"
4'-10"	6'-2"
5'-2"	5'-0"

Detail of 1/2"Ø bars "a" for 54" pipe headwall

2'-4"	12'-11"
2'-8"	11'-9"
3'-0"	10'-7"
3'-4"	9'-5"
3'-8"	8'-3"
4'-0"	7'-1"
4'-4"	5'-11"
4'-8"	4'-9"

Detail of 1/2"Ø bars "a" for 48" pipe headwall



D	Length
60	15'-2 1/2"
54	13'-9 1/2"
48	12'-4 1/2"
42	10'-11 1/2"

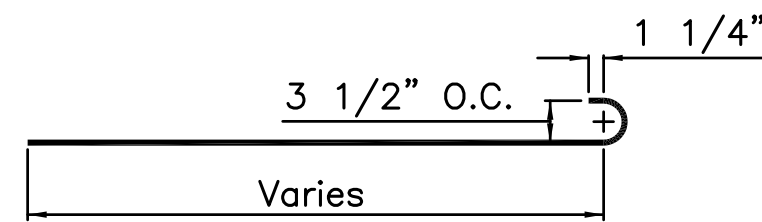
Detail Of 1/2"Ø bar "e"

3'-0"	15'-9"
3'-4"	14'-7"
3'-8"	13'-5"
4'-0"	12'-3"
4'-4"	11'-1"
4'-8"	9'-11"
5'-0"	8'-9"
5'-4"	7'-7"
5'-8"	6'-5"

Detail of 1/2"Ø bars "a" for 60" pipe headwall

2'-2"	11'-7"
2'-6"	10'-5"
2'-10"	9'-3"
3'-2"	8'-1"
3'-6"	6'-11"
3'-10"	5'-9"
4'-2"	4'-7"

Detail of 1/2"Ø bars "a" for 42" pipe headwall



Detail Of 1/2"Ø bar "c"-"c1"

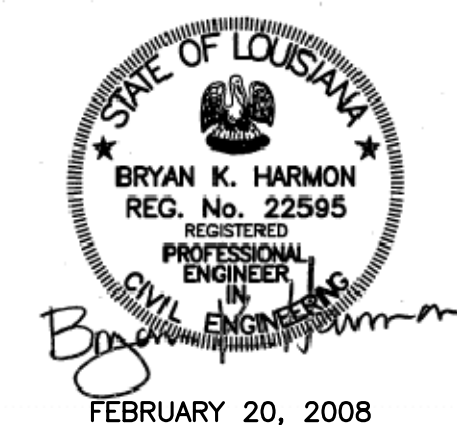
General Notes

All Concrete to be Class 6A4000
 Dimensions Reinforcing steel are to bar centers
 All exposed corners to be chamfered 3/4"
 When culvert is located at a site subject to scour, the curtain walls shall be made deeper or rip rap placed around inside face of curtain walls to prevent scouring.

QUANTITIES FOR ONE HEADWALL

DIAM. OF PIPE	NO.	BARS "a"			NO. OF EA. LENGTH	BARS "b"		BARS "b1"			NO. OF EA. LENGTH	BARS "c"		BARS "c1"			BARS "d"		BARS "e"		CU. YDS. CONCRETE		DEFORMED REINF. STEEL LBS.	
		SHORT BAR	VARIATION	LONG BAR		NO.	LENGTH	SHORT BAR	VARIATION	LONG BAR		NO.	LENGTH	SHORT BAR	VARIATION	LONG BAR	NO.	LENGTH	NO.	LENGTH	NO.	LENGTH		WITHOUT TOE WALL
42"	7	12'-11"	0'-6"	15'-11"	1	6	6'-9"	2'-7"	1'-9"	4'-4"	2	4	7'-5"	1'-2"	3'-0"	4'-2"	2	3	4'-9"	2	6'-1 1/2"	2.51	2.95	146
48"	8	14'-1"	0'-6"	17'-7"	1	6	7'-6"	2'-3"	1'-9"	5'-9"	2	4	8'-4"	2'-8"	3'-0"	5'-8"	2	3	5'-3"	2	6'-7 1/2"	3.09	3.58	181
54"	9	15'-4"	0'-6"	19'-4"	1	7	8'-4"	1'-5"	1'-9"	6'-8"	2	4	9'-3"	1'-6"	3'-0"	7'-6"	2	3	5'-9"	2	7'-1 1/2"	3.76	4.29	210
60"	9	17'-9"	0'-6"	21'-9"	1	7	9'-2"	2'-11"	1'-9"	8'-2"	2	4	10'-2"	3'-1"	3'-0"	9'-1"	2	3	6'-3"	2	7'-1 1/2"	4.46	5.05	265

All bars to be 1/2"Ø
 Slope 3:1



REINFORCED CONCRETE PIPE CULVERT HEADWALLS - FLARING WINGS
 3:1 SLOPE
 42" DIAM. TO 60" DIAM.

ENGINEERING DIVISION DEPARTMENT OF PUBLIC WORKS CITY OF BATON ROUGE & PARISH OF EAST BATON ROUGE			
DESIGNED R. ELLIS	DRAWN G. VANNICE	CHECKED R. ELLIS	APPROVED B. HARMON

DATE	DESCRIPTION REVISIONS	BY